

CERTIFIED LAND CORNER RESTORATION

Index No. R-4

R 4

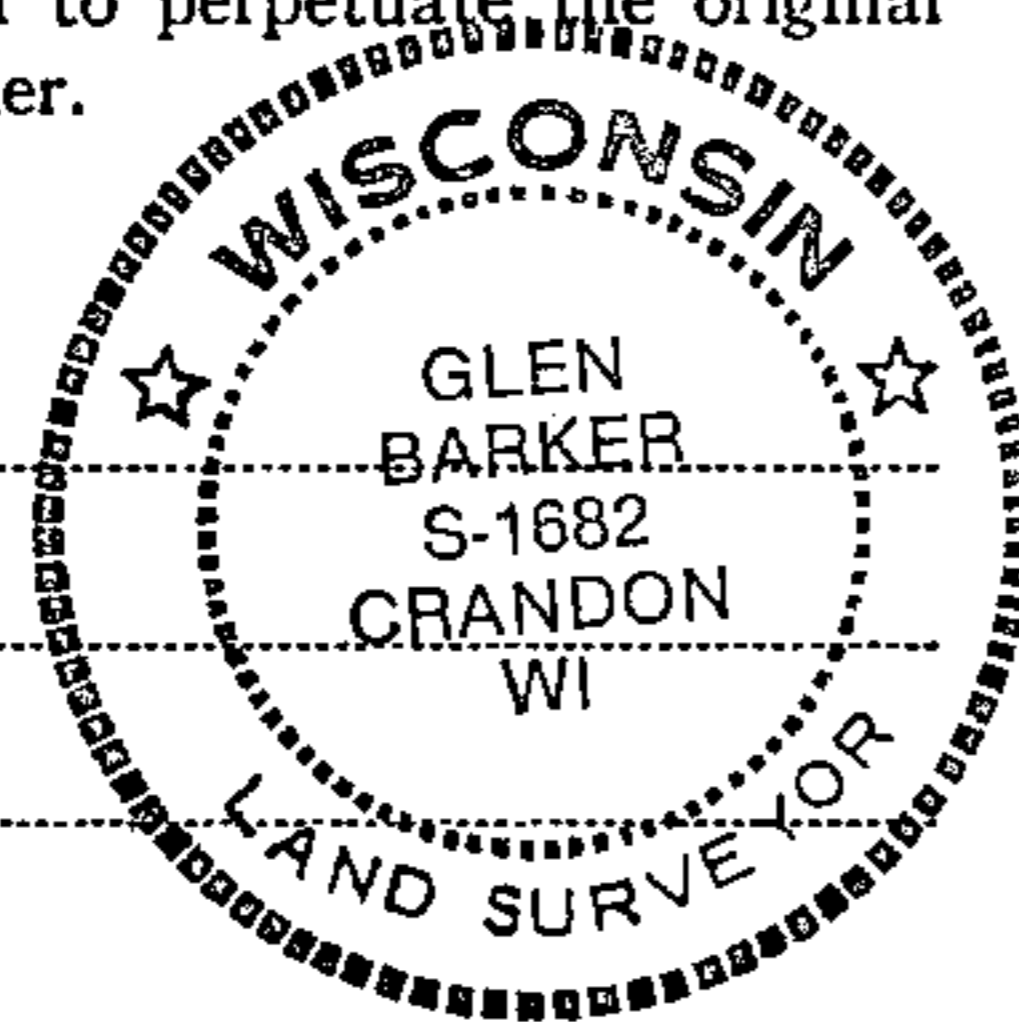
State of Wisconsin }  
Forest } ss.  
County of \_\_\_\_\_

I Glen Barker, do hereby  
certify that on the 4th day  
of January, 19 85, I found  
~~evidence of the~~ E 1/16  
corner of Sections 19 & 30  
Township 33, North, Range  
14 East, Fourth Principal Meridian,  
as described hereon; and that from this evidence  
I established a new monument and accessories  
as described hereon to perpetuate the original  
location of this corner.

Resident witnesses:

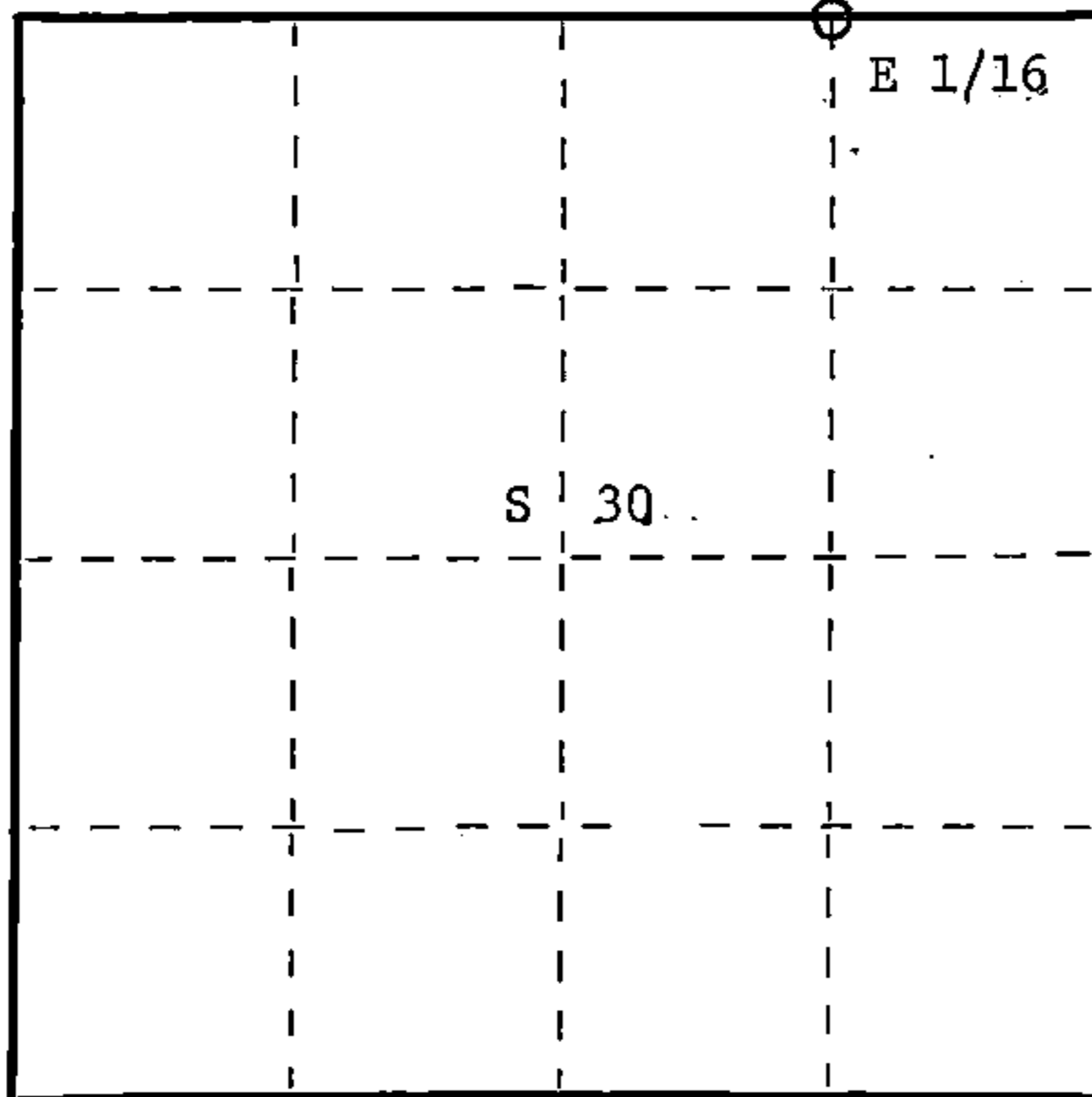
N. Spiess

R. Lundt



T38N

R14E



○ = Corner monument restored.

History of original corner establishment:

No evidence of any previous corner

Description of corner evidence found:

Total distance from section corner 19-20-29-30 to 1/4 corner between sections 19 & 30 is 2605.07'.

Set E 1/16 1302.54' intermediate.

Description of monument and accessories I established to perpetuate the original location of this corner.

Set a 1" iron pipe with 2" diameter alloy cap stamped:

S1682

Monument projects 18" above ground.

T38N

Marked NBTs

Sugar 10" S37E 22.56'  
Maple 6" S41W 35.07'

E 1/16 S 19  
S 30

R14E

CPI - 1985

Dated at Rhineland, Wis., this 6th day of February, 19 85.

Signature Glen Barker Title Registered Land Surveyor Registration No. 1682  
(County Surveyor, Registered Land Surveyor, or other duly authorized official)

Office of Register of Deeds, County of Forest, I hereby certify that the within  
instrument was filed in this office for record on the 22nd day of February, 19 85  
at 2:15 o'clock P. M.

Paul Aschenbrenner  
(Register of Deeds)

By \_\_\_\_\_ Deputy

Document Number **127505**

FORM 985 H. C. MILLER CO., MILWAUKEE

43814190010