

CERTIFIED LAND CORNER RESTORATION

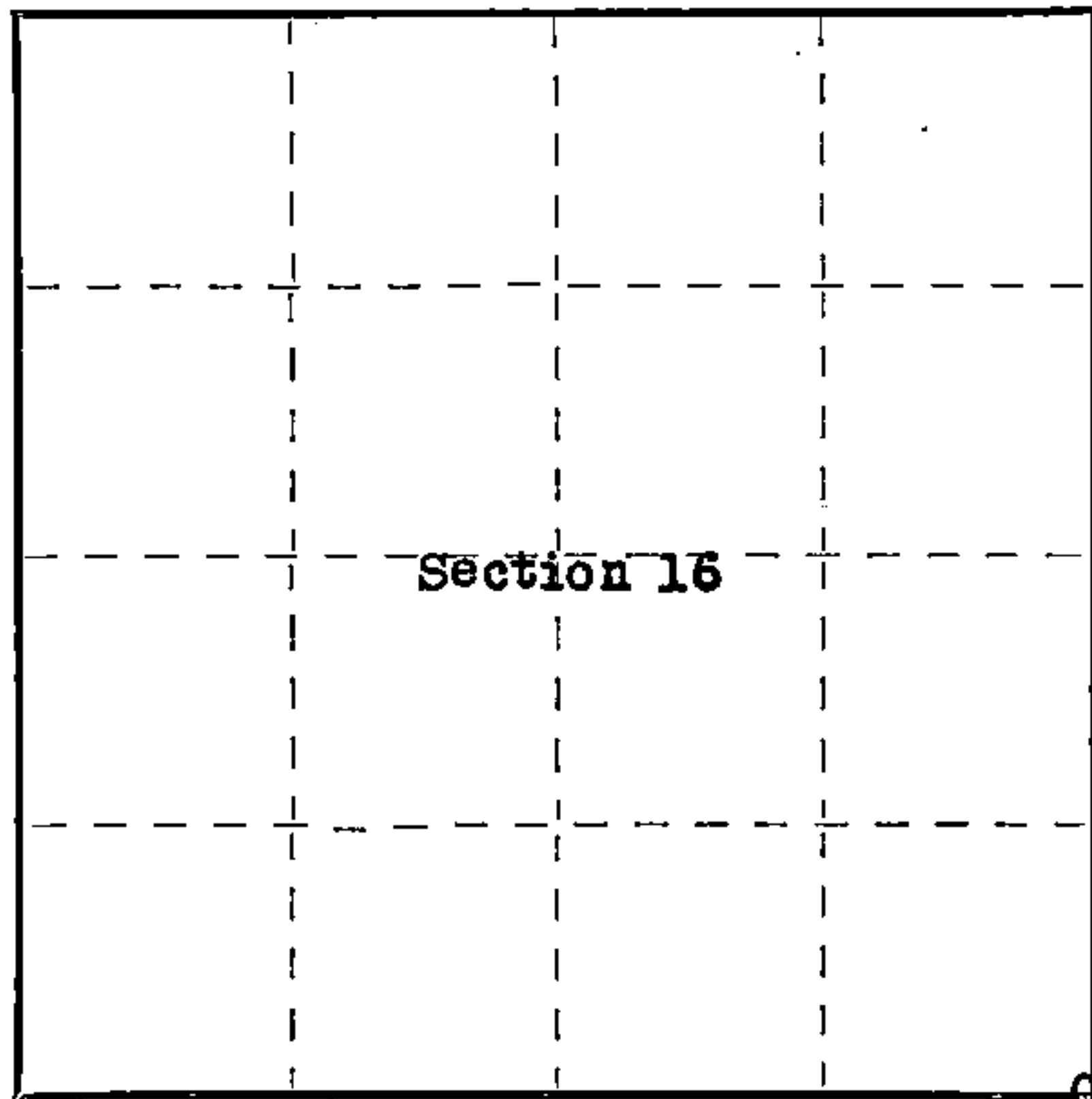
83259

Index No. 28 N 13

State of Wisconsin }
County of Forest } ss.

I Robert E. Bandow, do hereby certify that on the 11th day of November, 1959, I found evidence of the South-East corner of Section 16 Township 38 North, Range 14 East, Fourth Principal Meridian, as described hereon; and that from this evidence I established a new monument and accessories as described hereon to perpetuate the original location of this corner.

Resident witnesses:



○ = Corner monument restored.

History of original corner establishment:

Original corner established in 1865 by James D. Nowlin, Government Deputy Surveyor.

Original bearing trees: Birch 15" N15°W 18 lks.
Sugar 17" N40°E 30 lks.

Description of corner evidence found:

4"x4" scribed wood post.

Wood post was cut from native pine approximately 25 years ago, and scribed with standard surveyor's timber scribe. Corner is accepted locally as being in it's proper position. The corner lies approximately 80 feet North of the center line of U. S. Forest Service Road 2167.

Description of monument and accessories I established to perpetuate the original location of this corner. Set 2"x5' galvanized iron pipe filled with concrete and capped with brass cap, stamped as follows:

T38N R14E
S16 S15
S21 S22
1959

HLS No. S-104

Blazed and scribed the following bearing trees: Maple 14" N33°00'W 8.4 feet
Maple 10" S24°30'W 27.1 feet
White Birch 16" N44°30'E 33.6 feet

Genisot Engineering Co.

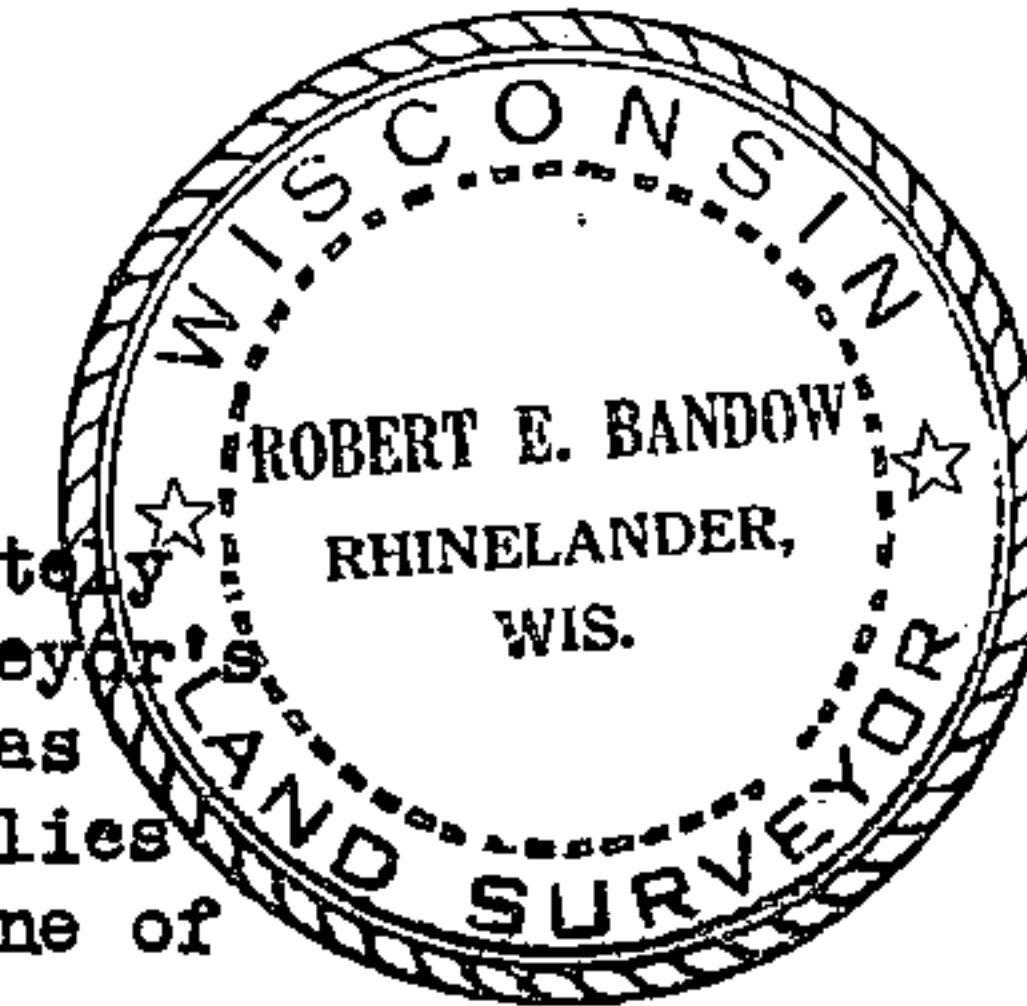
Dated at Rhineland, Wis., this 3rd day of December, 1959.

Signature Robert E. Bandow Title Registered Land Surveyor Registration No. S-104
(County Surveyor, Registered Land Surveyor, or other duly authorized official)

Office of Register of Deeds, County of Forest, I hereby certify that the within instrument was filed in this office for record on the 21st day of March, 1960 at 9:00 o'clock A. M.

Anna Peterson
(Register of Deeds)

By Deputy



Subscribed and sworn to before me this 20th day of December 1959. Joseph P. Seibly, Notary Public Oneida County, Wis. My Commission expires May 1, 1960

FORM 935 H.C. MILLER CO., MILWAUKEE

000091148247

U. S. PUBLIC LAND SURVEY MONUMENT RECORD

INSTRUCTIONS: This record shall show the location of the corner and shall include all of the following nine elements (a through i).

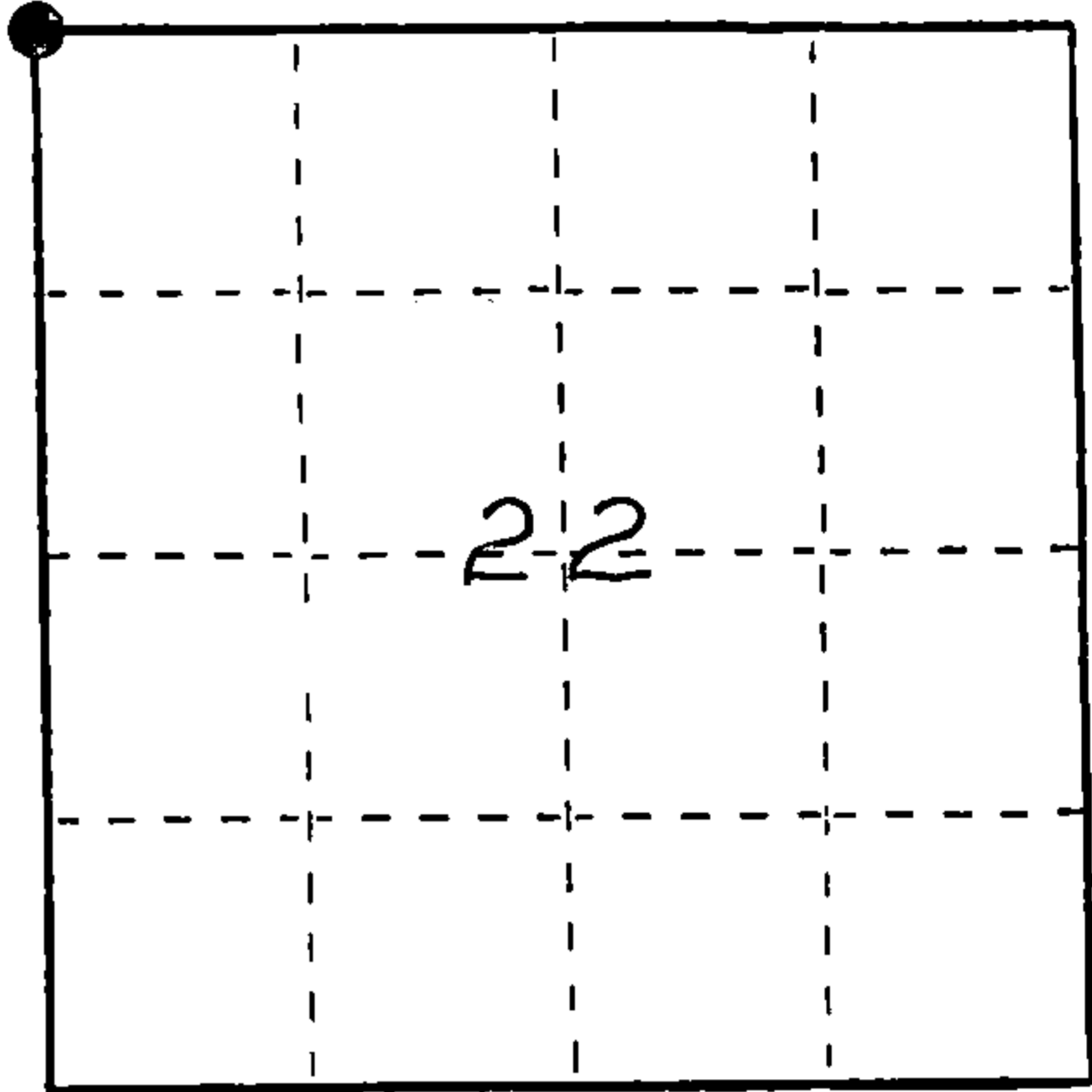
- (a) Identify the corner by reference to the U.S. public land survey system.
- = Corner monument restored.

Northwest corner of Section 22,
T38N, R14E

REGISTER'S OFFICE
Forest County, Wis.

Received for record this 5th day
of November A.D., 1986 at
3:50 o'clock P. M. and recorded
in Vol. CORNER RESTORATIONS
page N-13

Paul Aschebrenner
Register of Deeds

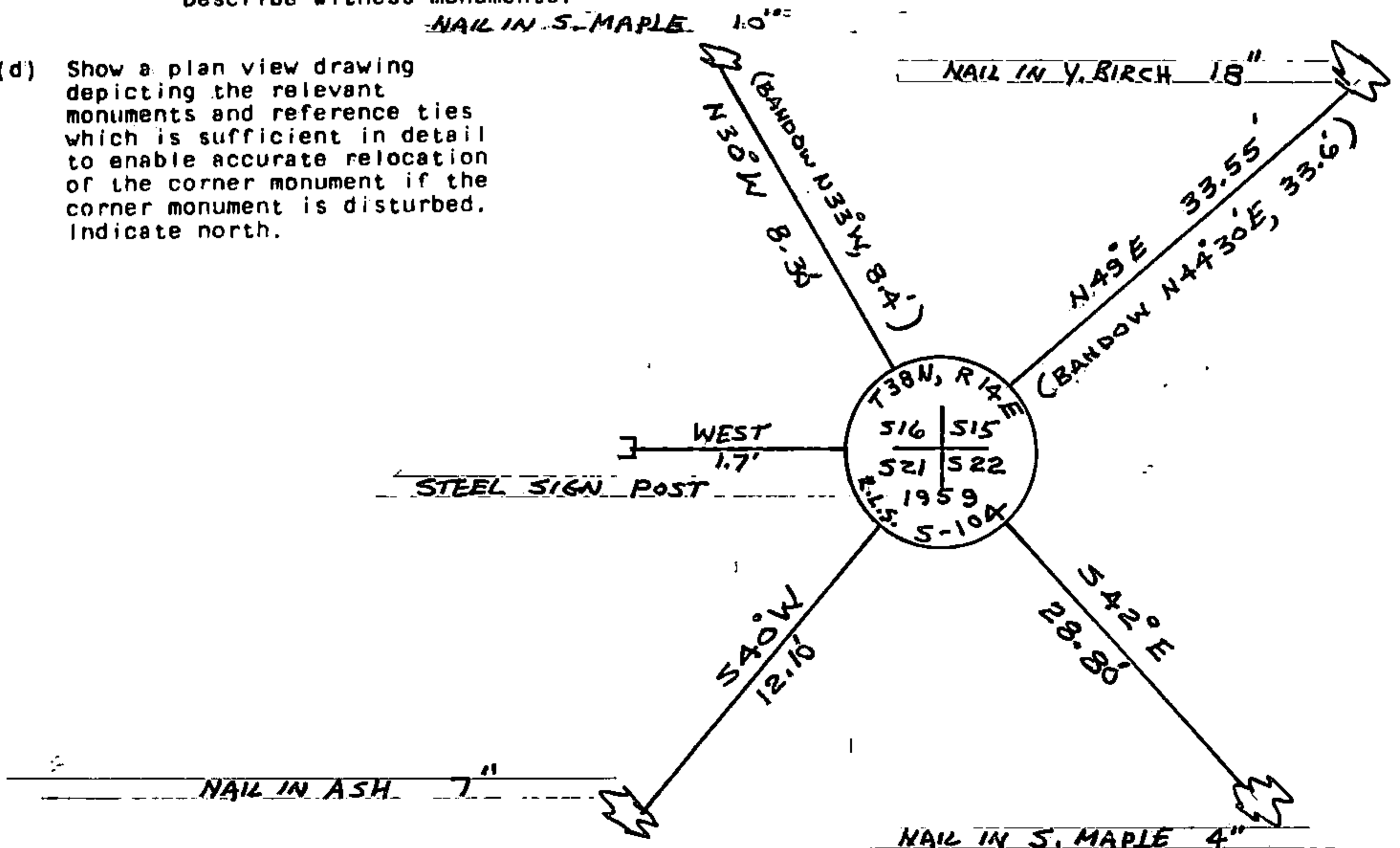


- (b) Describe any record evidence, monument evidence, occupational evidence, testimonial evidence or any other material evidence you considered, and whether the monument was found or placed.
In 1865 James L. Nowlin set wood post with the following BTs: Birch, 15" N15°W. 17 links; Sugar, 17", N40°E, 30 links.
Found 2" Galvanized Iron Pipe with 3" diameter brass tablet stamped to identify corner. Corner was restored by Robert E. Bandow in November 12, 1959.

Maple	14"	N33°E	8.4 feet
White Birch	16"	N44°30'E	33.6 feet

- (c) In the plan view drawing below, provide reference ties to at least 4 witness monuments, or, if the location is within a municipality, to at least 2 witness monuments. (Witness monuments shall be made of concrete, natural stone, iron or other equally durable material.)
Describe witness monuments.

- (d) Show a plan view drawing depicting the relevant monuments and reference ties which is sufficient in detail to enable accurate relocation of the corner monument if the corner monument is disturbed. Indicate north.



(e) Describe any material discrepancy between the location of the corner as restored or reestablished and the location of that corner as previously restored or reestablished by distance and direction. Show the discrepancy on the plan view drawing under (d), above. Show the distances between the corner as previously restored or reestablished and (1) the corner as restored or reestablished, and (2) to at least 2 of the witness monuments shown on the drawing in (d), above.

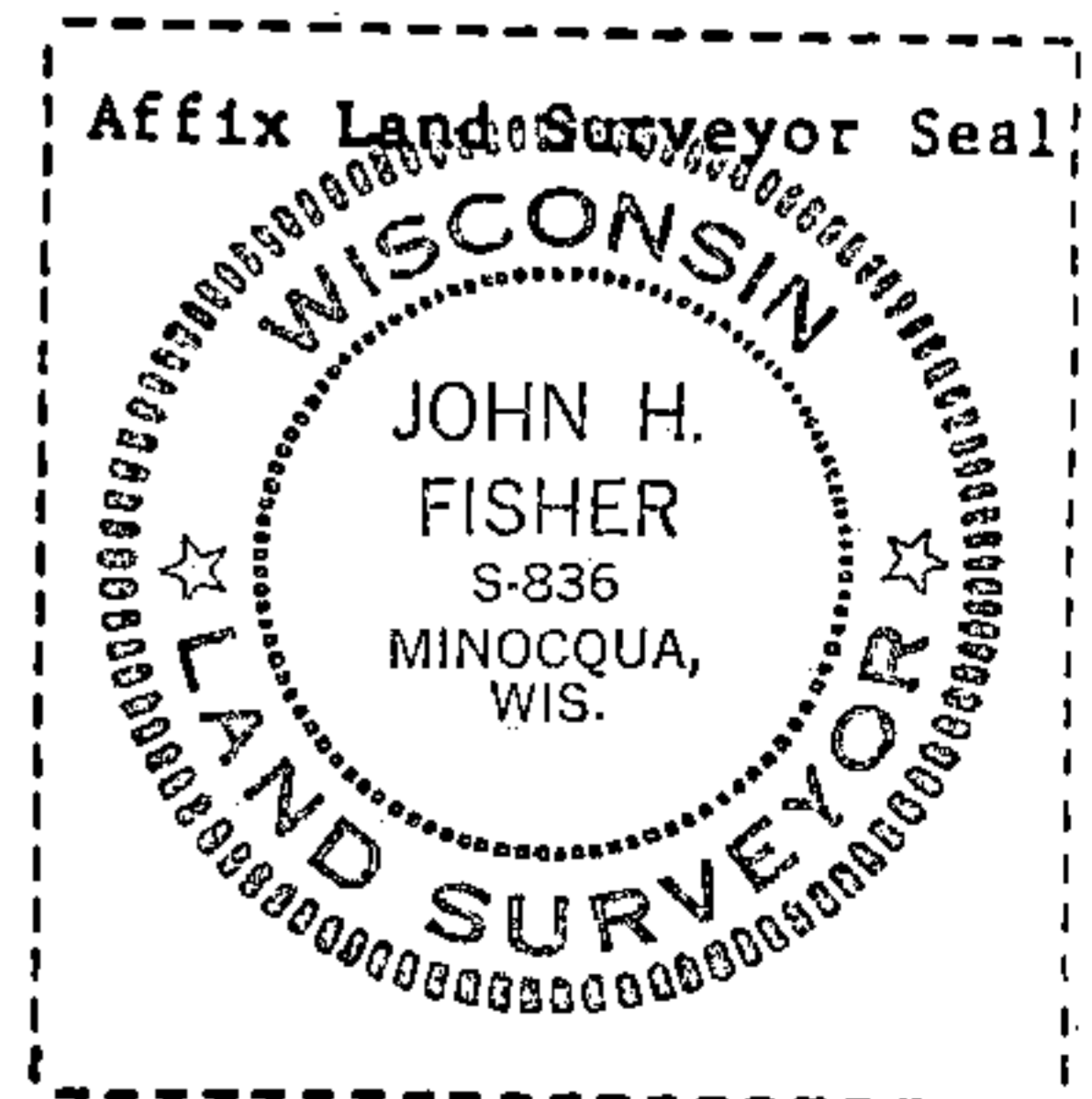
NA

(f) Was the corner restored through acceptance of (1) an obliterated evidence location, or, (2) a found perpetuated location?

Through acceptance of a perpetuated location found

(g&h) Was the corner reestablished through lost corner proportionate methods? If so, show the method, including the directions and distances to other public land survey corners used as evidence or used for proportioning in determining the corner location?

No



(1) I, John H. Fisher
(type or print name) certify that the corner location shown on this record was determined by me or under my direction and control and that this U.S. Public Land Survey Monument Record is correct and complete to the best of my knowledge and belief.

John H. Fisher
Signature

10/15/86
Date