

U.S. PUBLIC LAND SURVEY MONUMENT RECORD

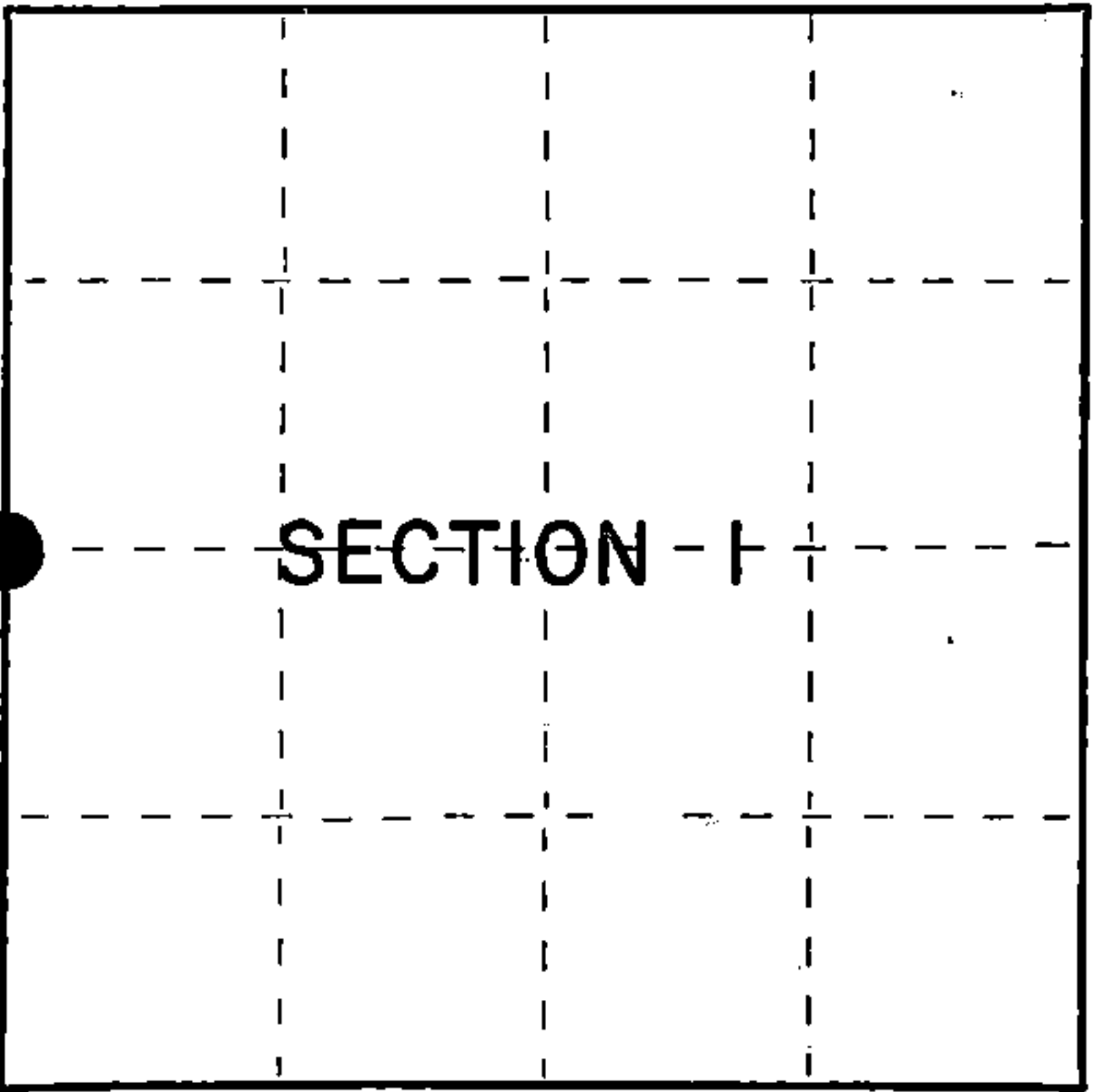
Index No. **C-21**

State of Wisconsin }
County of Forest } ss.

I William B. Cochrane, do hereby
certify that on the 1st day
of August, 1983, I found
evidence of the West Quarter
corner of Section 1
Township 38, North, Range
14 East, Fourth Principal Meridian,
as described hereon; and that from this evidence
I established a new monument and accessories
as described hereon to perpetuate the original
location of this corner.

Resident witnesses:

David Brownell



○ = Corner monument restored.

History of original corner establishment:

Original Government Survey in 1865 by H.&J.L. Nowlin. South corrected between Sections 1 and 2, 42.10 chains, set Quarter Corner post to Sections 1 and 2, from which the following bear:

Hemlock	21"	N27°E	25 lks.
Linden	12"	S59°W	24 lks.

North 3.10 chains, creek 4 lks. wide runs NE

Description of corner evidence found:

Fence line bears East of Old Hwy 139
Creek 3.10 chains North of fence line
Old Hwy 139 bears North and South

The creek call North, the fence line East, and the center line of old Hwy 139 were accepted as the best available evidence for restoring the corner position.

No original corner evidence was recovered.

Description of monument and accessories I established to perpetuate the original location of this corner.

At the restored corner position, set a 2½" diameter aluminum pipe monument, 3 feet long, 3½ feet in the ground, with an aluminum cap stamped: T38N R14E, 1/4, S1, S2, 1983, S-1107. From which the following new blazed and scribed bearing trees bear:

R. Pine	12"	S38°E	50.90 feet
R. Pine	18"	N70°W	63.60 feet

Dated at Hiles, Wis., this 27th day of March, 1985

Signature William B. Cochrane Title Land Surveyor Registration No. S-1107
(County Surveyor, Registered Land Surveyor, or other duly authorized official)

Office of Register of Deeds, County of Forest, I hereby certify that the within
instrument was filed in this office for record on the 24th day of April, 1985
at 1:00 o'clock P. M.

Paul Aschenbrenner
(Register of Deeds)

By _____ Deputy

- (e) Describe any material discrepancy between the location of the corner as restored or reestablished and the location of that corner as previously restored or reestablished by distance and direction. Show the discrepancy on the plan view drawing under (d), above. Show the distances between the corner as previously restored or reestablished and (1) the corner as restored or reestablished, and (2) to at least 2 of the witness monuments shown on the drawing in (d), above.

See drawing below.

- (f) Was the corner restored through acceptance of (1) an obliterated evidence location, or, (2) a found perpetuated location?

Restored from accepted evidence.

- (g&h) Was the corner reestablished through lost corner proportionate methods? If so, show the method, including the directions and distances to other public land survey corners used as evidence or used for proportioning in determining the corner location?

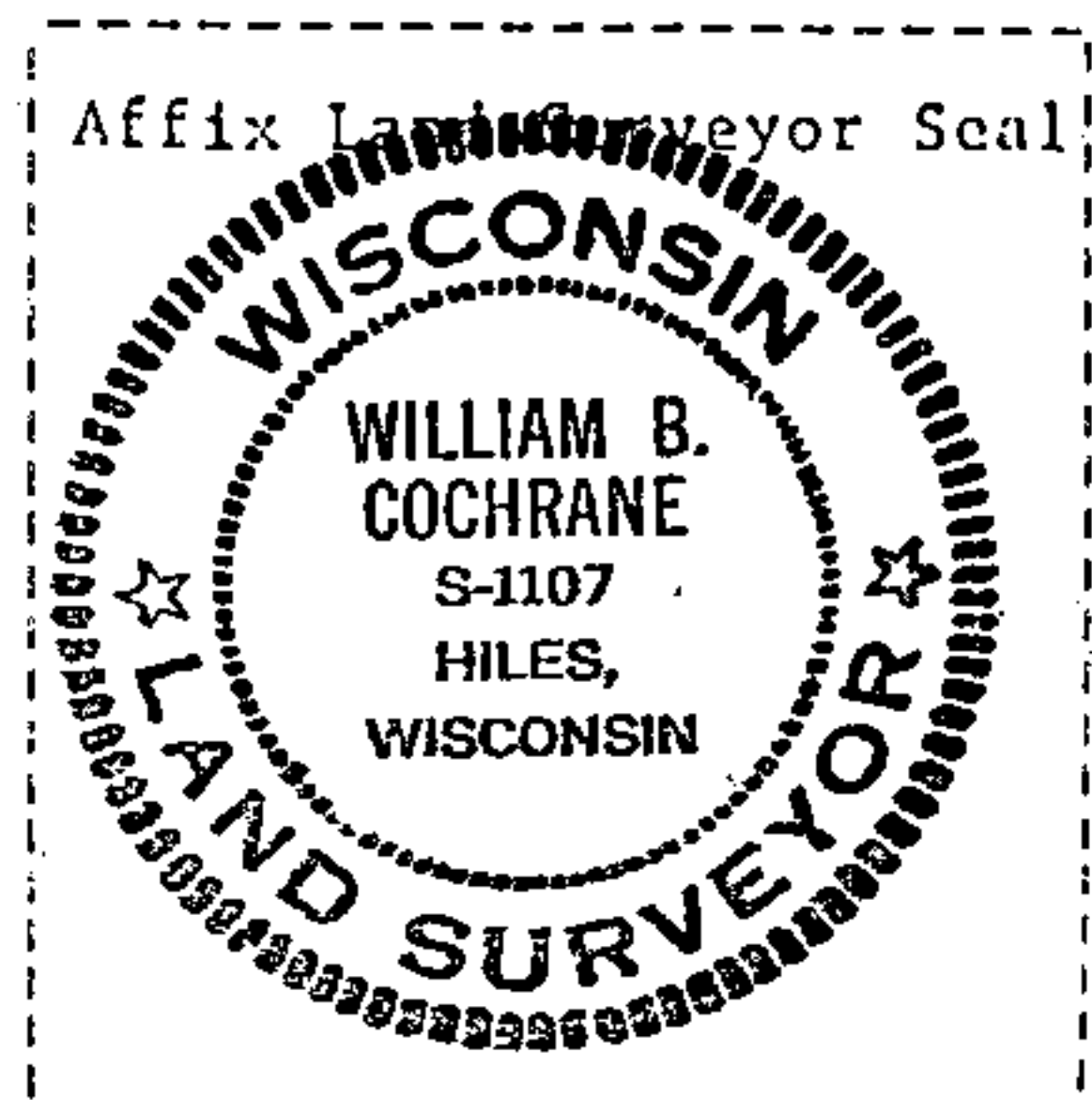
18" R. Pine
N70°W, 63.60 feet



Quarter Corner S2 | S1



12" R. Pine
S38°E, 50.90 feet



- (i) 1. William B. Cochrane
[type or print name] certify that the corner location shown on this record was determined by me or under my direction and control and that this U.S. Public Land Survey Monument Record is correct and complete to the best of my knowledge and belief.

William B. Cochrane
Signature

March 27, 1985
Date

NOV 23 2020

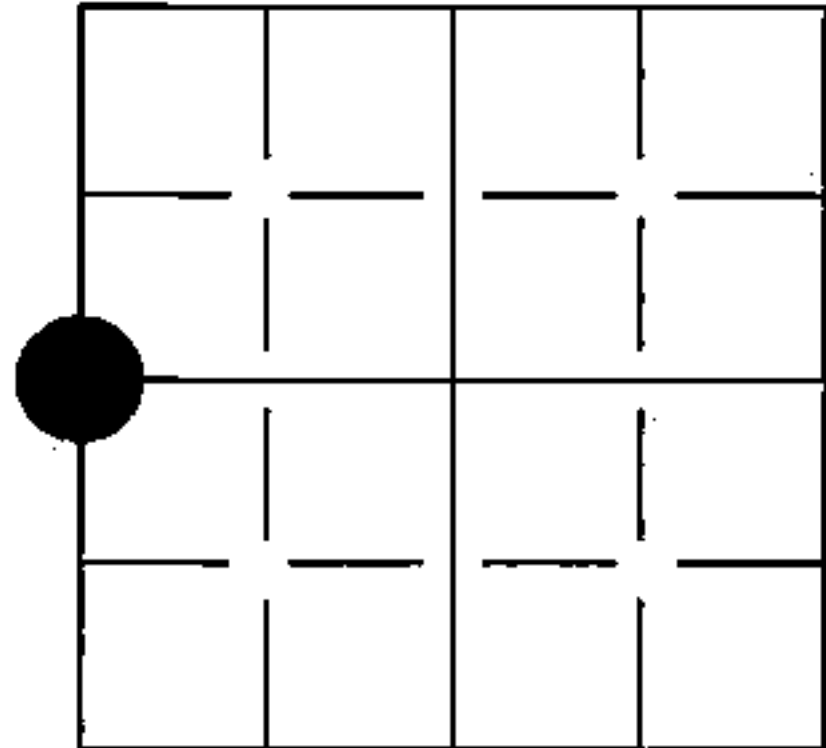
Time: 8:30 AM
Vol.: Corner Restoration
Page Number: C-21

U S PUBLIC LAND SURVEY MONUMENT RECORD

NOTE: This form is intended and designed to fulfill all requirements of Wisconsin Administrative Code, Chapter A-E 7.08 U.S. Public Land Survey Monument Record (3) (a-i)

(a) CORNER LOCATION
W1/4 CORNER OF SECTION 1
TOWNSHIP 38 NORTH
RANGE 14 EAST OF THE 4TH PM
TOWN OF POPPLE RIVER
COUNTY OF FOREST

WISCRS - FOREST COUNTY
N: 655162.88 USft
E: 888931.98 USft
Datum: NAD83 (2011)
GNSS Method RTN - Direct
GNSS Control WISCORS VRS



(b) HISTORY OF ORIGINAL CORNER ESTABLISHMENT

Original Surveyor: James L. NOLIN

Original Accessories:

Date of Survey: Commenced: August 30, 1865
Completed: Sept 9th, 1865

24" Hemlock, N27°E, 25 links
12" Linden, S59°W, 24 links

(b)(f)(g)(h) Description of monument found at this corner and if it was accepted, state all evidence (material, testimonial, occupational, plats, records, other monuments) used as a basis for accepting. If not accepted or if nothing was found, state evidence used as basis for establishing location. If re-established through lost corner proportionate methods, indicate all monuments, distances and directions used to establish. Indicate type of monument and sign post found or set.

1985 - William B. Cochrane set a 2 1/2" diameter aluminum pipe monument stamped to identify corner at original distances and made the following bearing trees:

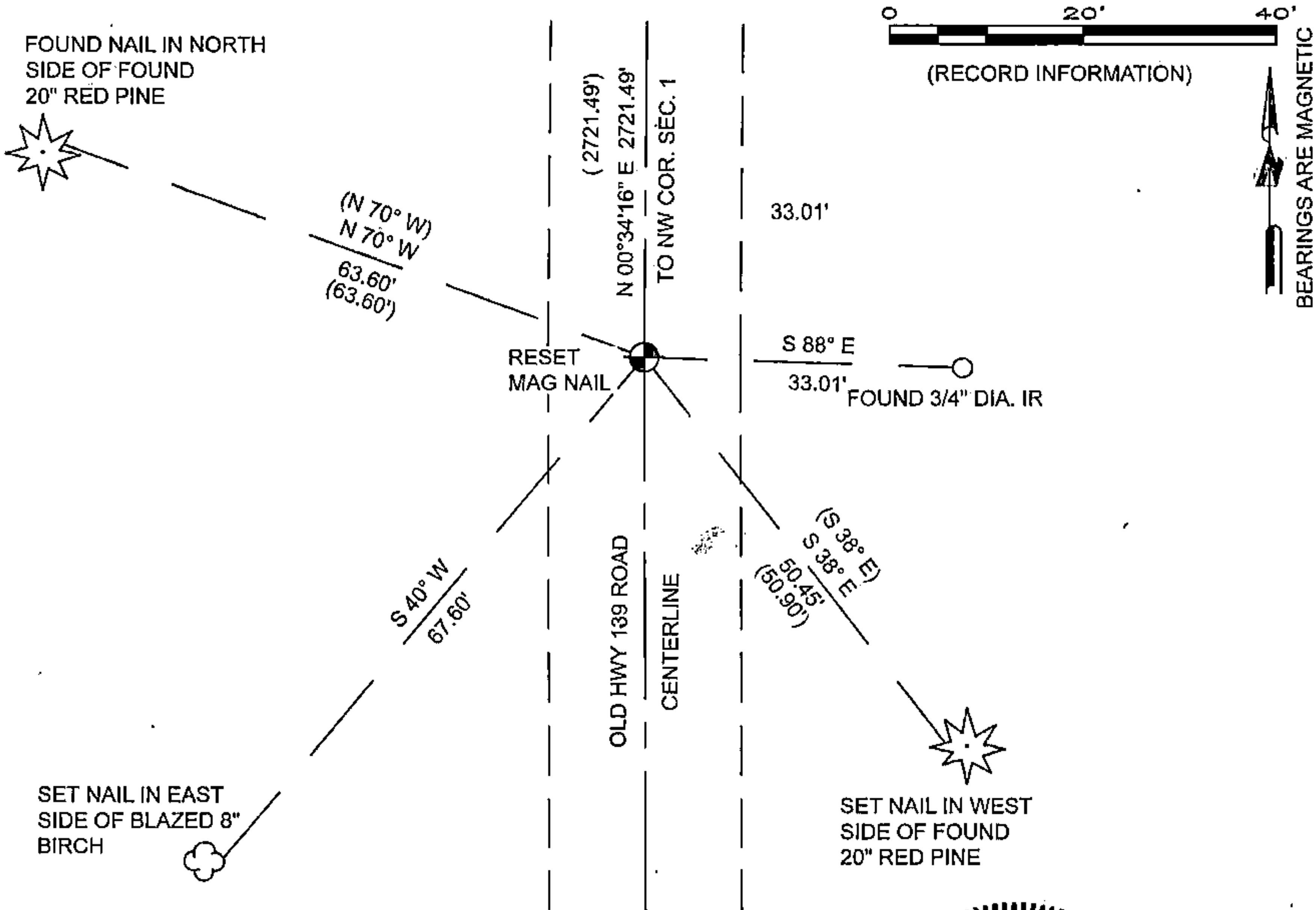
12" R. Pine, S38°E, 50.90'
18" R. Pine, N70°W, 63.60'

2005 - Michael A. Trembl found a USFS Aluminum Monument and referenced on a Plat of Survey dated 11/14/2005

2019 - Jeffrey T. Brock computed the position from ties and referenced on a Survey Map dated 10/29/2019

May 2020 - I set a MAG nail from ties over magnetic attraction and made new ties as referenced below

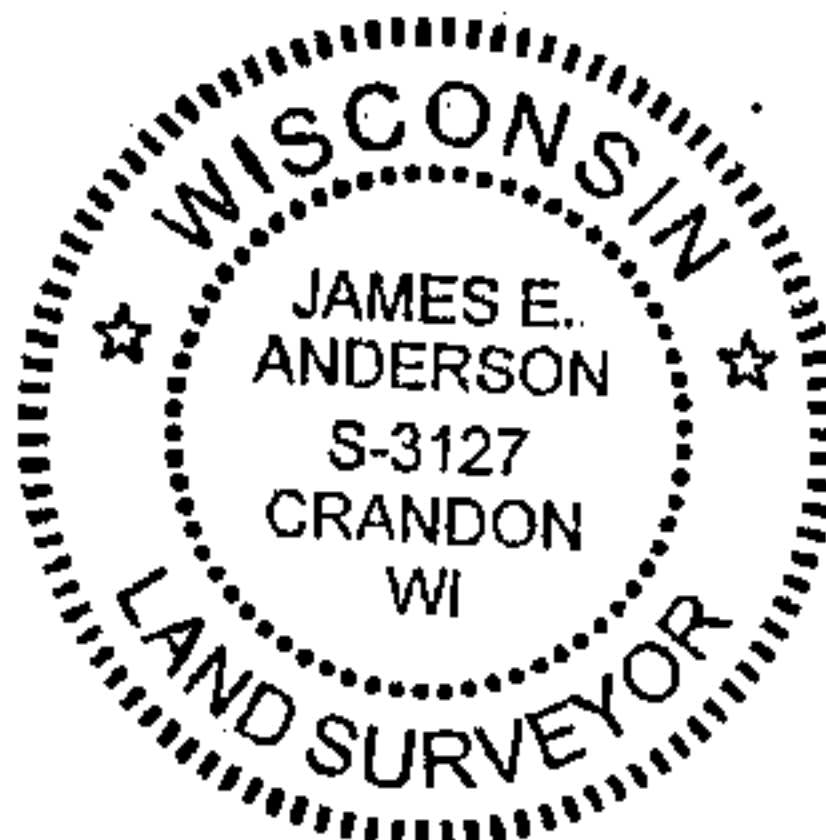
The coordinate value shown has been verified by at least one of the following methods: 1) comparison to a previously GNSS determined published value, 2) the value is the average of two or more GNSS observations at a markedly different time, 3) one or more distances were measured back to the GNSS observed corner from temporary GNSS observed offset locations.



(I) I, James E Anderson, Professional Land Surveyor No. S-3127, hereby certify that the corner location on this record was determined by me or under my direction and control and that this U.S. Public Land Survey Monument Record is correct and complete to the best of my knowledge, and belief

James E Anderson
SIGNATURE

05/22/2020
DATE



C-21