

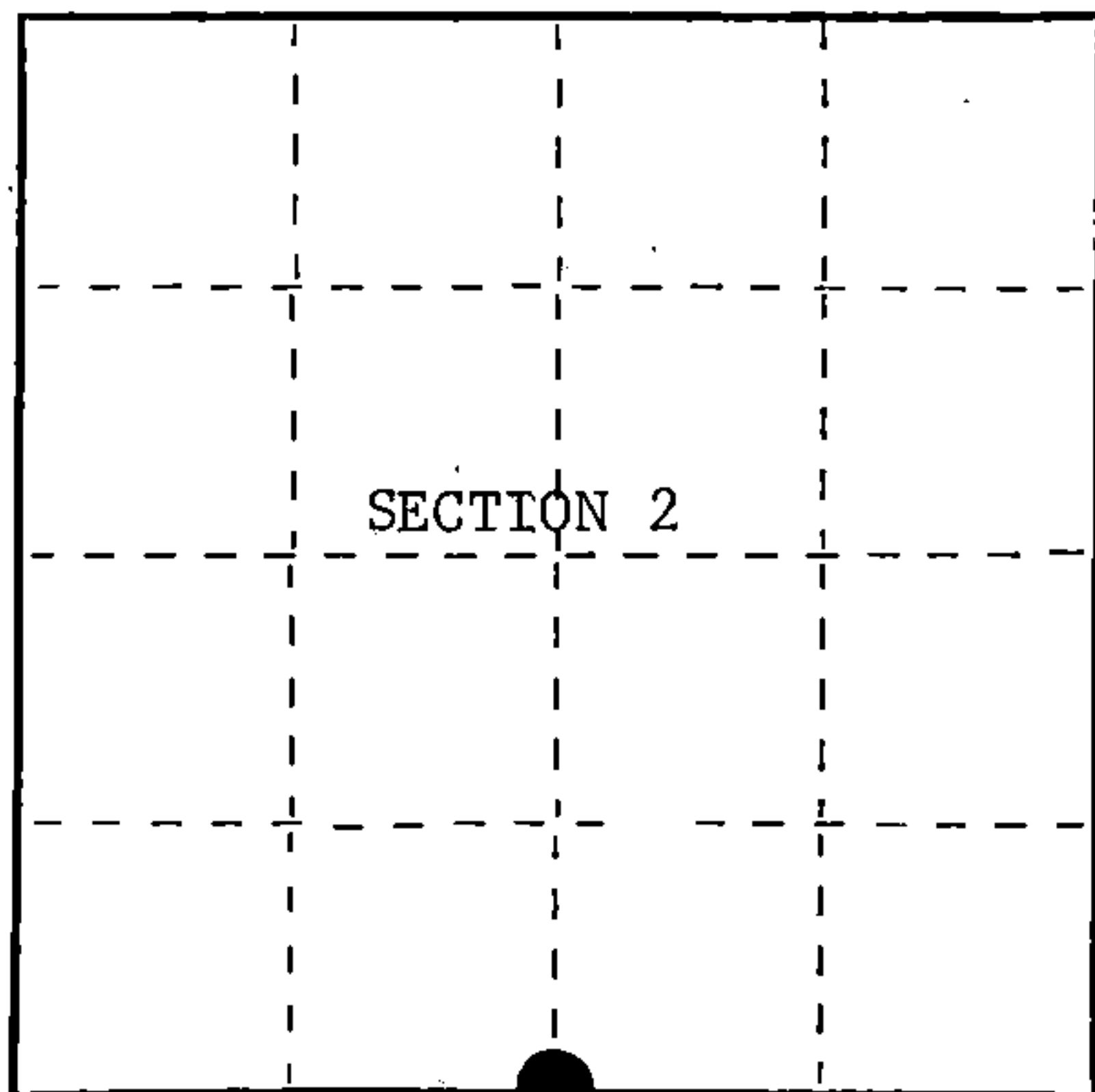
U.S. PUBLIC LAND SURVEY MONUMENT RECORD

Index No. E-19

State of Wisconsin }
County of Forest } ss.

I, William B. Cochrane, do hereby certify that on the 10th day of May, 1982, I found evidence of the South Quarter corner of Section 2 Township 38 North, Range 14 East, Fourth Principal Meridian, as described hereon; and that from this evidence I established a new monument and accessories as described hereon to perpetuate the original location of this corner.

Resident witnesses:



○ = Corner monument restored.

History of original corner establishment:

Original Government Survey in 1865 by H. & J.L. Nowlin. West corrected between Sections 2 and 11, at 40 chains, set Quarter Section Post to Sections 2 and 11. From which the following bear;

Sugar	12"	N37°E	8 lks.
Lind	18"	S32°W	12 lks.

Description of corner evidence found:

Found a 4"x4" squared wood post, from which a fence line bears North and East.

I accept the wood post in concurrence with the fence lines as the best available evidence for restoring the corner position.

Description of monument and accessories I established to perpetuate the original location of this corner.

In place of wood post, set a 2½ inch diameter aluminum pipe monument 3 feet long, 2½ feet in the ground, with an aluminum cap stamped; T38N, R14E, 1/4, S2, S11, 1982, S-1107. From which the following new blazed and scribed bearing trees bear;

Balsam	13"	N15°E	34.95 feet
Aspen	16"	S12°E	32.15 feet
Aspen	11"	N75°W	40.45 feet
Steel Sign Post		NW	1.00 feet

Dated at Hiles, Wis., this 8th day of August, 1988

Signature William B. Cochrane Title Land Surveyor Registration No. S-1107
(County Surveyor, Registered Land Surveyor, or other duly authorized official)

Office of Register of Deeds, County of Forest, I hereby certify that the within instrument was filed in this office for record on the 20th day of September, 1990 at 10:45 o'clock A. M.

(Register of Deeds)

By Paul Chitko Deputy

FORM NO. 985-A

H.C. Miller Company

Stock No. 26273

DOCUMENT NUMBER

140460

43814020020

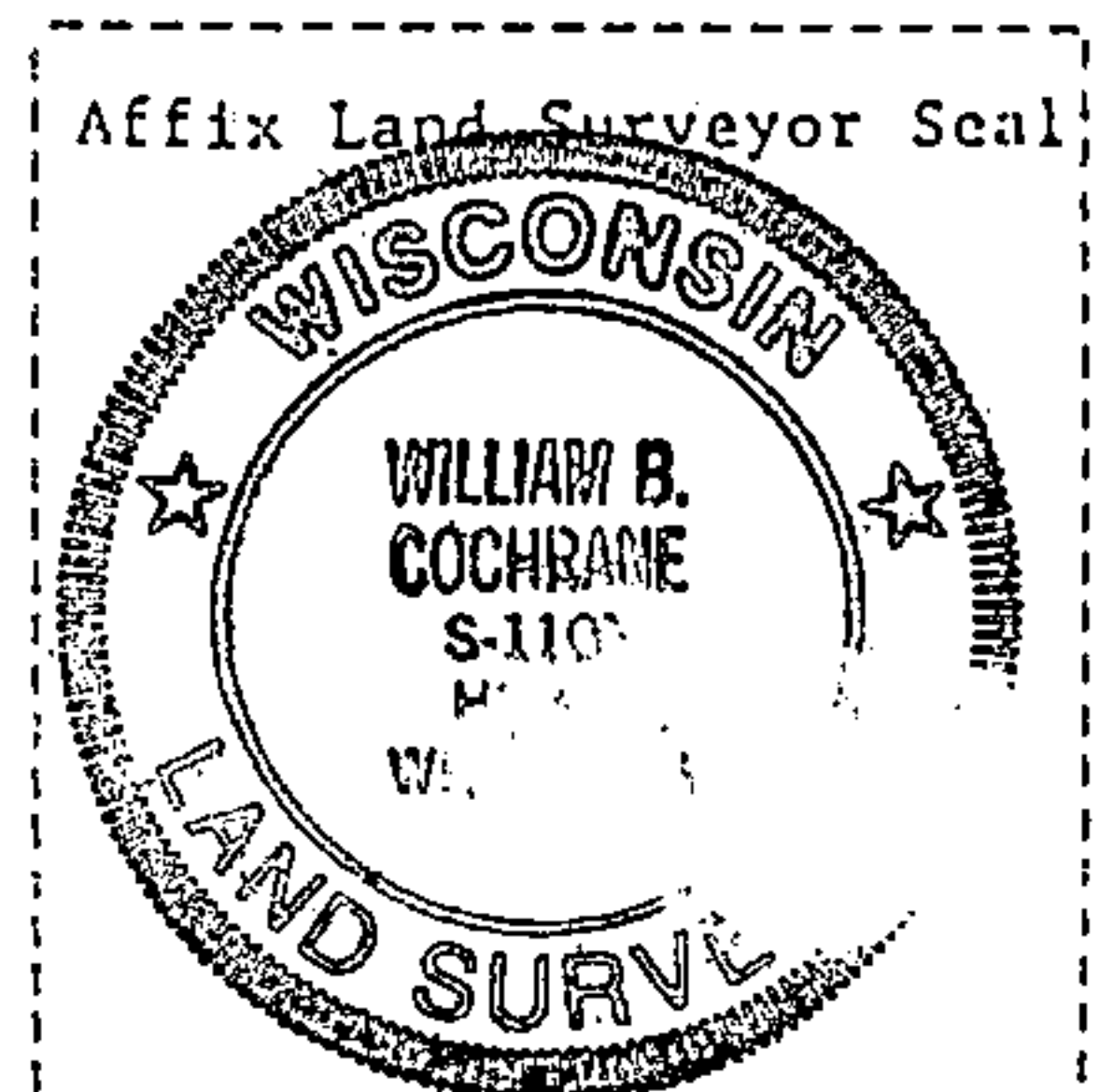
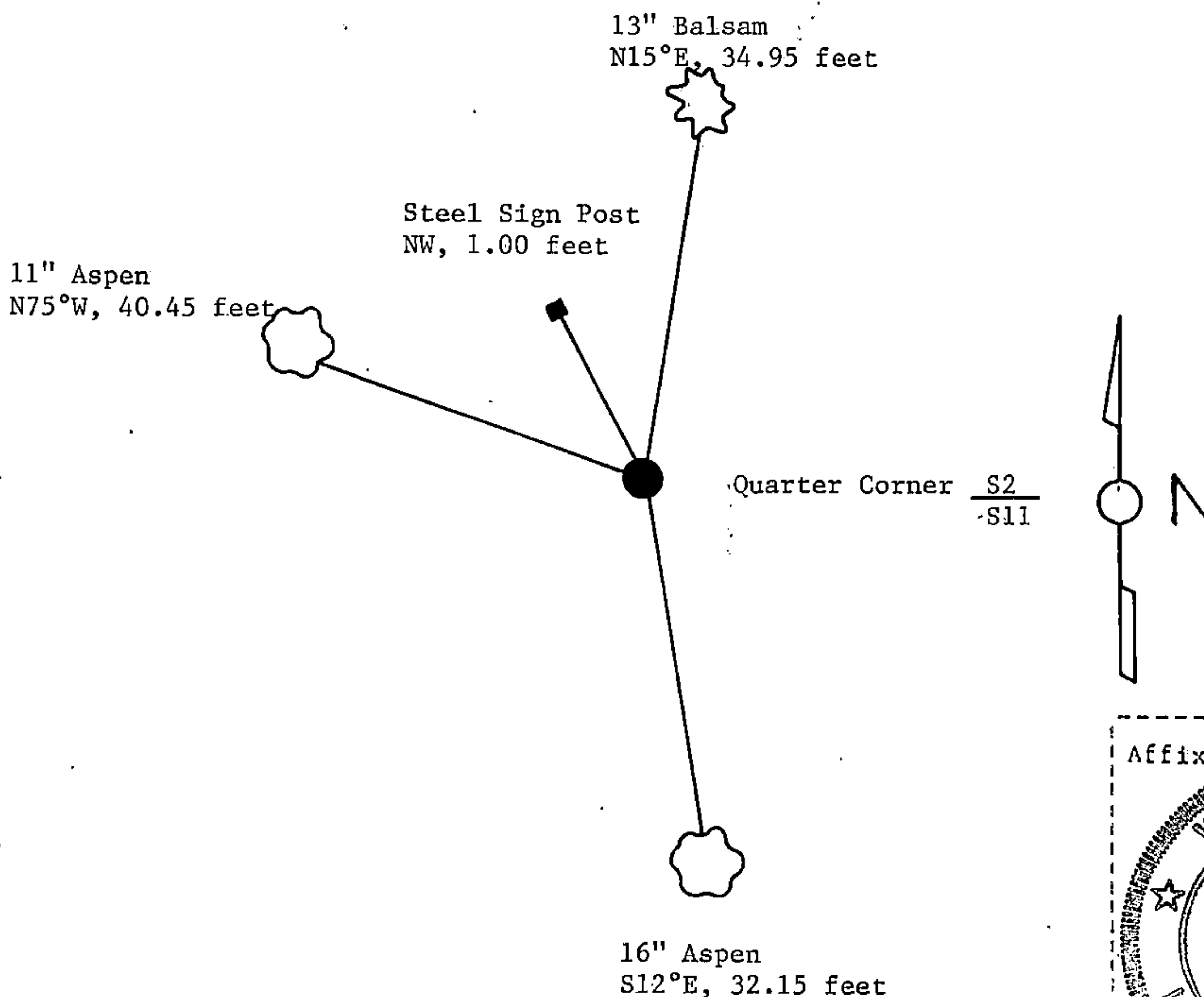
- (e) Describe any material discrepancy between the location of the corner as restored or reestablished and the location of that corner as previously restored or reestablished by distance and direction. Show the discrepancy on the plan view drawing under (d), above. Show the distances between the corner as previously restored or reestablished and (1) the corner as restored or reestablished, and (2) to at least 2 of the witness monuments shown on the drawing in (d), above.

See drawing below.

- (f) Was the corner restored through acceptance of (1) an obliterated evidence location, or, (2) a found perpetuated location?

Restored through accepted evidence.

- (g&h) Was the corner reestablished through lost corner proportionate methods? If so, show the method, including the directions and distances to other public land survey corners used as evidence or used for proportioning in determining the corner location?



- (i) I, William B. Cochrane
(type or print name) certify that the corner location shown on this record was determined by me or under my direction and control and that this U.S. Public Land Survey Monument Record is correct and complete to the best of my knowledge and belief.

William B. Cochrane August 8, 1988
Signature Date

Survey requested by: [Signature] 5-18-90
District Ranger Date