

Stock No. 26273  
DOCUMENT NUMBER  
145343

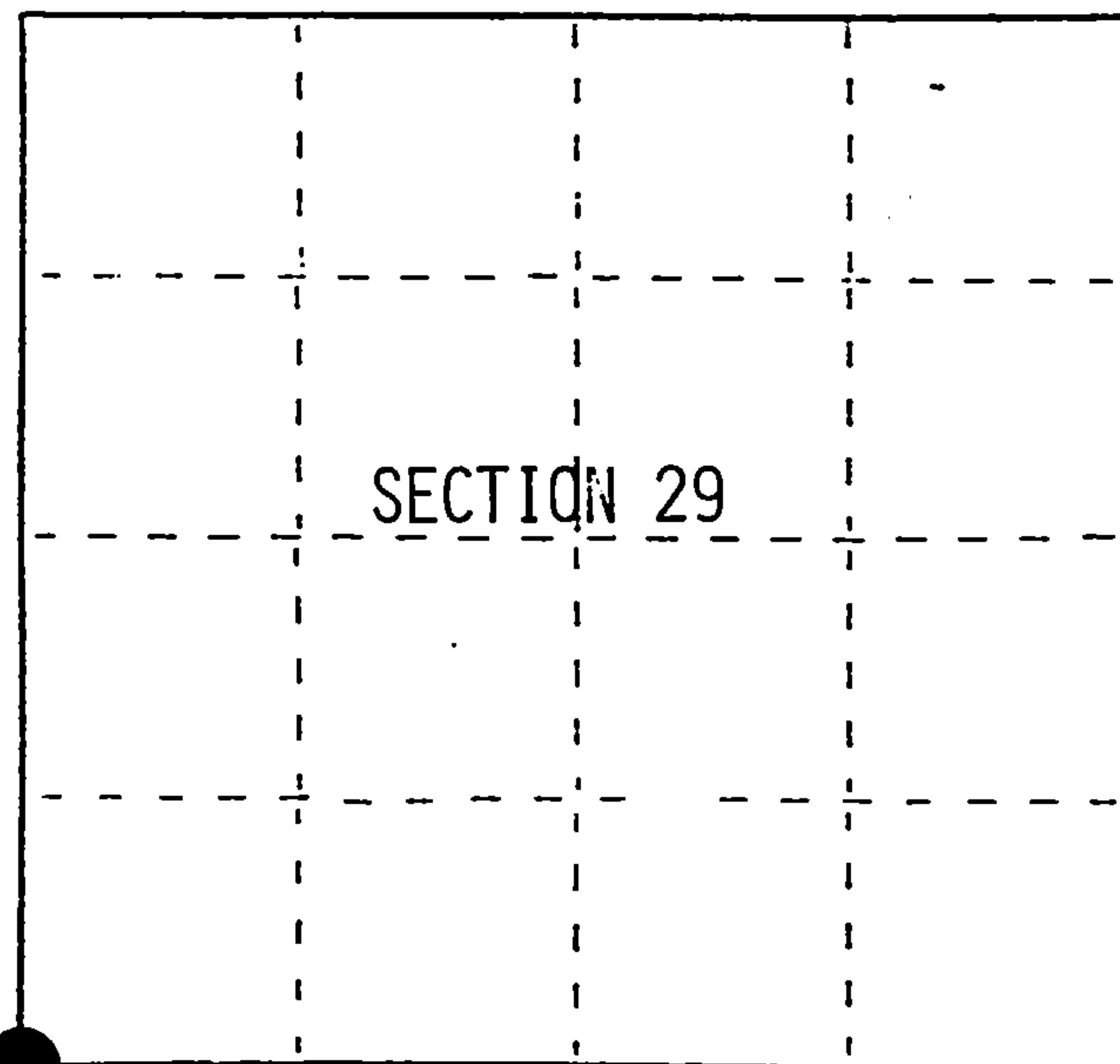
U.S. PUBLIC LAND SURVEY MONUMENT RECORD

Index No. V-5

State of Wisconsin }  
County of Forest ss.

I, William B. Cochrane, do hereby  
certify that on the 19th day  
of June, 1990, I found  
evidence of the Southwest Section  
corner of Section 29  
Township 38, North, Range  
13 East, Fourth Principal Meridian,  
as described hereon; and that from this evidence  
I established a new monument and accessories  
as described hereon to perpetuate the original  
location of this corner.

Resident witnesses:



● = Corner monument restored.

History of original corner establishment:

Original Government Survey in 1865 by H. & J.L. Nowlin.

In a 1973 survey of Section 31, Jean Resvick, a Land Surveyor with the Forest Service,  
found the corner position marked by a wood post, in accordance with stream call East,  
and record features West and South. In place of wood post, set a 2" inside diameter  
galvanized pipe, 5 feet long, with a brass cap marked; T38N R13E, S29, S30, S31, S32,  
1973, S-802. Blazed and scribed the following new bearing trees;

W. Spruce	11"	S52°W	50.29 feet
W. Spruce	16"	N55°W	30.90 feet
Description of corner evidence found:		Steel Sign Post, NE,	1.00 feet

Found the monument described above in place, from which the following bear;

Spruce(stub)	N55°W	30.90 feet
Spruce(stub)	S52°W	50.29 feet
Steel Sign Post	Northeast	1.00 feet

Description of monument and accessories I established to perpetuate the original location of this corner.

Blazed and scribed the following new bearing trees;

Spruce	16"	S70°W	58.47 feet
Cedar	20"	N58°W	51.94 feet

Dated at Hiles, Wis., this 19th day of February, 1992

Signature William B. Cochrane Title Land Surveyor Registration No. S-1107  
(County Surveyor, Registered Land Surveyor, or other duly authorized official)

Office of Register of Deeds, County of Forest, I hereby certify that the within  
instrument was filed in this office for record on the 31st day of August, 1992  
at 10:15 o'clock A.M.

Paul Aschenbrenner  
(Register of Deeds)

By Deputy

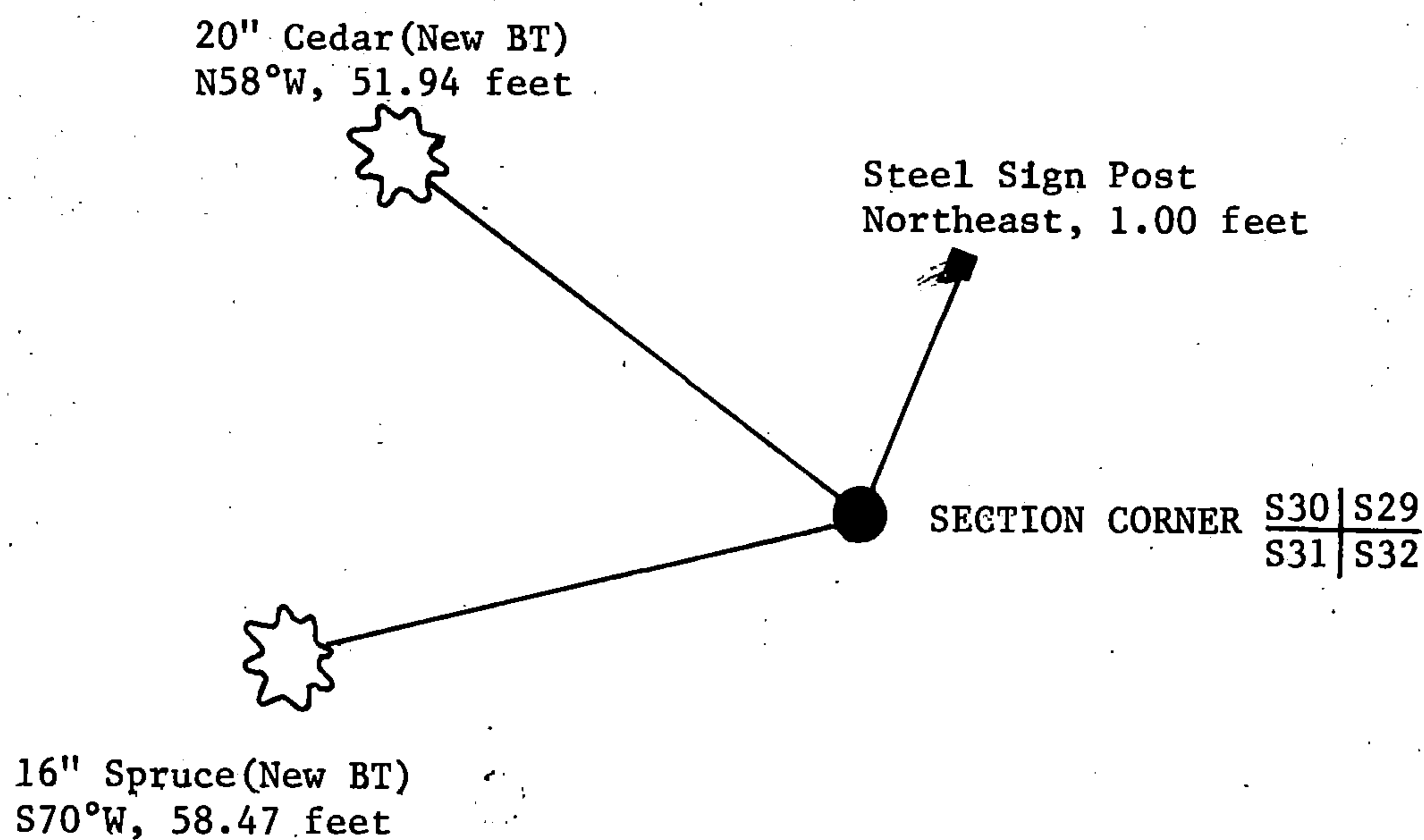
4381330 0000

(e) Describe any material discrepancy between the location of the corner as restored or reestablished and the location of that corner as previously restored or reestablished by distance and direction. Show the discrepancy on the plan view drawing under (d), above. Show the distances between the corner as previously restored or reestablished and (1) the corner as restored or reestablished, and (2) to at least 2 of the witness monuments shown on the drawing in (d), above.

(f) Was the corner restored through acceptance of (1) an obliterated evidence location, or, (2) a found perpetuated location?

Restored through acceptance of a found perpetuated location.

(g&h) Was the corner reestablished through lost corner proportionate methods? If so, show the method, including the directions and distances to other public land survey corners used as evidence or used for proportioning in determining the corner location?



Affix Land Surveyor Seal



(i) I, William B. Cochrane  
(type or print name) certify that the corner location shown on this record was determined by me or under my direction and control and that this U.S. Public Land Survey Monument Record is correct and complete to the best of my knowledge and belief.

William B. Cochrane Feb. 19, 1992  
Signature Date

Survey requested by: Sue Vap 4/2/92  
District Ranger Date