

U.S. PUBLIC LAND SURVEY MONUMENT RECORD

Index No. T-17.....

State of Wisconsin }  
County of Forest } ss.

History of original corner establishment:

1865; H. & J. L. Nowlin established this corner, set a wood post and two BTs:  
6" Hemlock, N22°E, 13 Links                      8" Cedar, S69°W, 8 Links

I, Milo E. Stefan, do hereby certify that on the 6th day of June, 1990, I found evidence of the restored the W 1/4 corner of Section 26 Township 38, North, Range 13 East, Fourth Principal Meridian, as described hereon; and that from this evidence I established a new monument and accessories as described hereon to perpetuate the original location of this corner.

Description of corner evidence found:

Corner was destroyed during Highway #55 construction many years ago. I declare this corner as "lost" and restore it by Lost Methods, "Single Proportionate Measurement".

Resident witnesses:

Myron Smith

Description of monument and accessories I established to perpetuate the original location of this corner.

I placed a railroad spike in black-top surface of the highway with a Reference Corner East, 33.00 feet. Reference Corner is a 2 1/2" x 36" Aluminum Monument in mound of stone.

BTs to Section Corner:

6" Sugar, N57°E, 63.75'                      6" Sugar, S38°E, 91.47'  
6" Red Maple, S47°W, 78.60'              6" Black Ash, N46°W, 68.18'  
Steel Sign Post is East of  
Reference Corner 1.3'

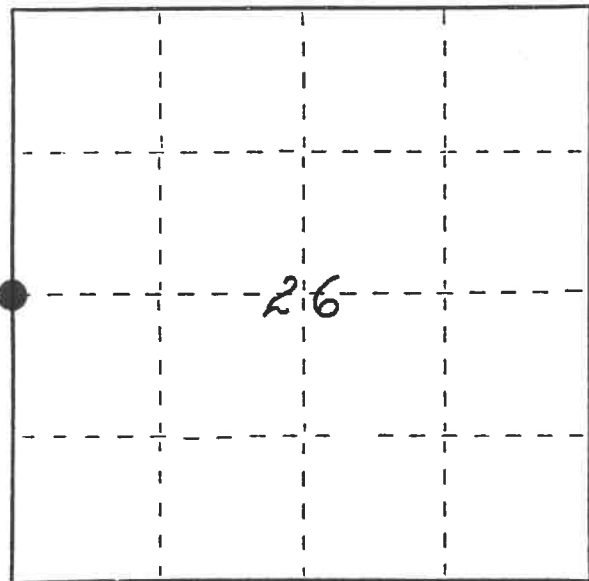
Dated at Rhineland, Wis., this 5th day of July, 1990

Signature Milo E. Stefan Title Land Surveyor Registration No. 1558  
(County Surveyor, Registered Land Surveyor, or other duly authorized official)

Office of Register of Deeds, County of Forest, I hereby certify that the within instrument was filed in this office for record on the 10th day of December, 1991 at 10:15 o'clock A. M.

(Register of Deeds)

By Paul Chitko Deputy



● = Corner monument restored.

FORM NO. 985-A



Stock No. 26273  
DOCUMENT NUMBER  
143396

43813272000

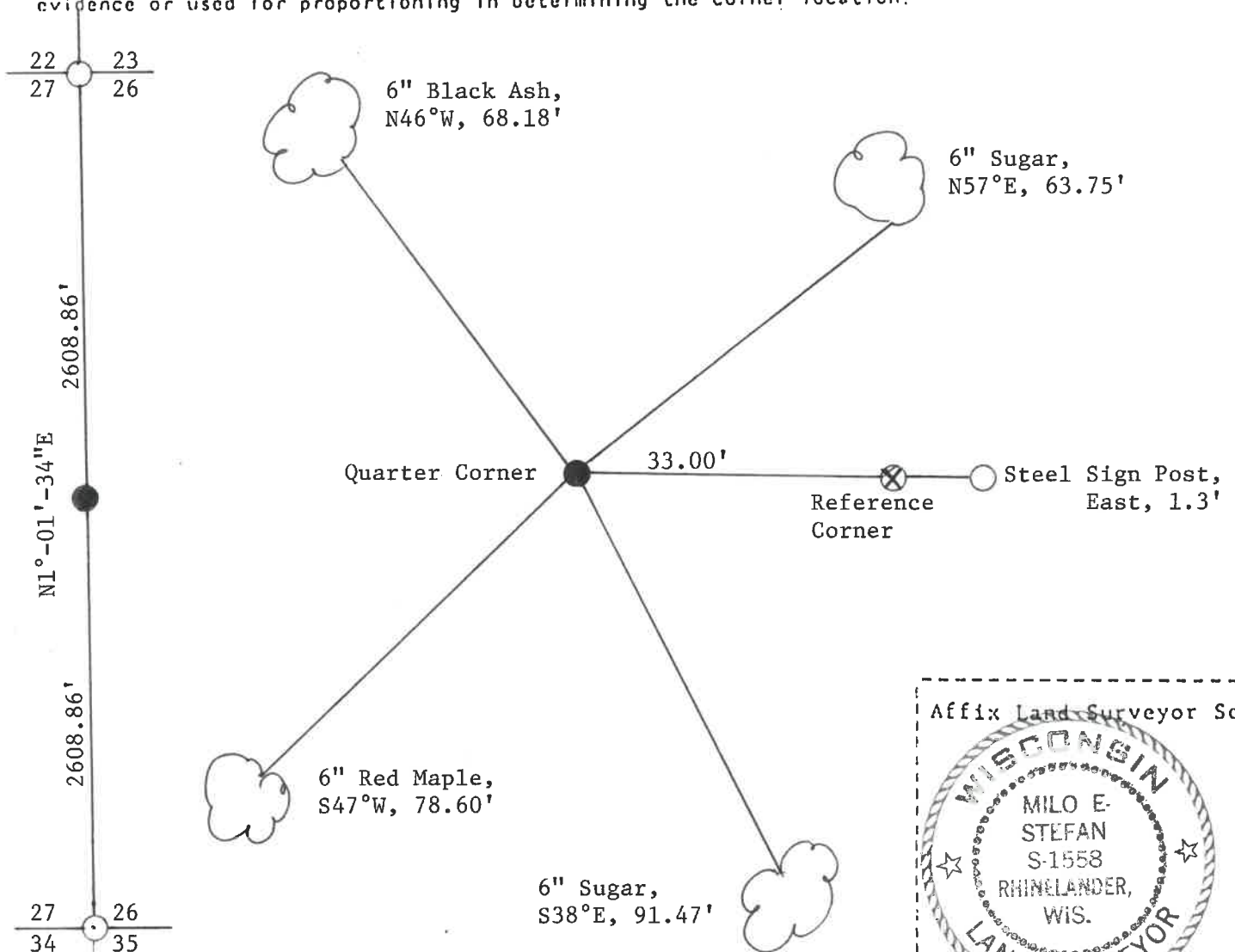
e) Describe any material discrepancy between the location of the corner as restored or reestablished and the location of that corner as previously restored or reestablished by distance and direction. Show the discrepancy on the plan view drawing under (d), above. Show the distances between the corner as previously restored or reestablished and (1) the corner as restored or reestablished, and (2) to at least 2 of the witness monuments shown on the drawing in (d), above.

None

(f) Was the corner restored through acceptance of (1) an obliterated evidence location, or, (2) a found perpetuated location?

N/A

(g&h) Was the corner reestablished through lost corner proportionate methods? If so, show the method, including the directions and distances to other public land survey corners used as evidence or used for proportioning in determining the corner location?



(i) I, Milo E. Stefan  
 (type or print name) certify that the corner location shown on this record was determined by me or under my direction and control and that this U.S. Public Land Survey Monument Record is correct and complete to the best of my knowledge and belief.

Milo E. Stefan 7/9/90  
 Signature Date

Survey requested by: Dave S. Steeg 6/4/91  
 District Ranger Date