

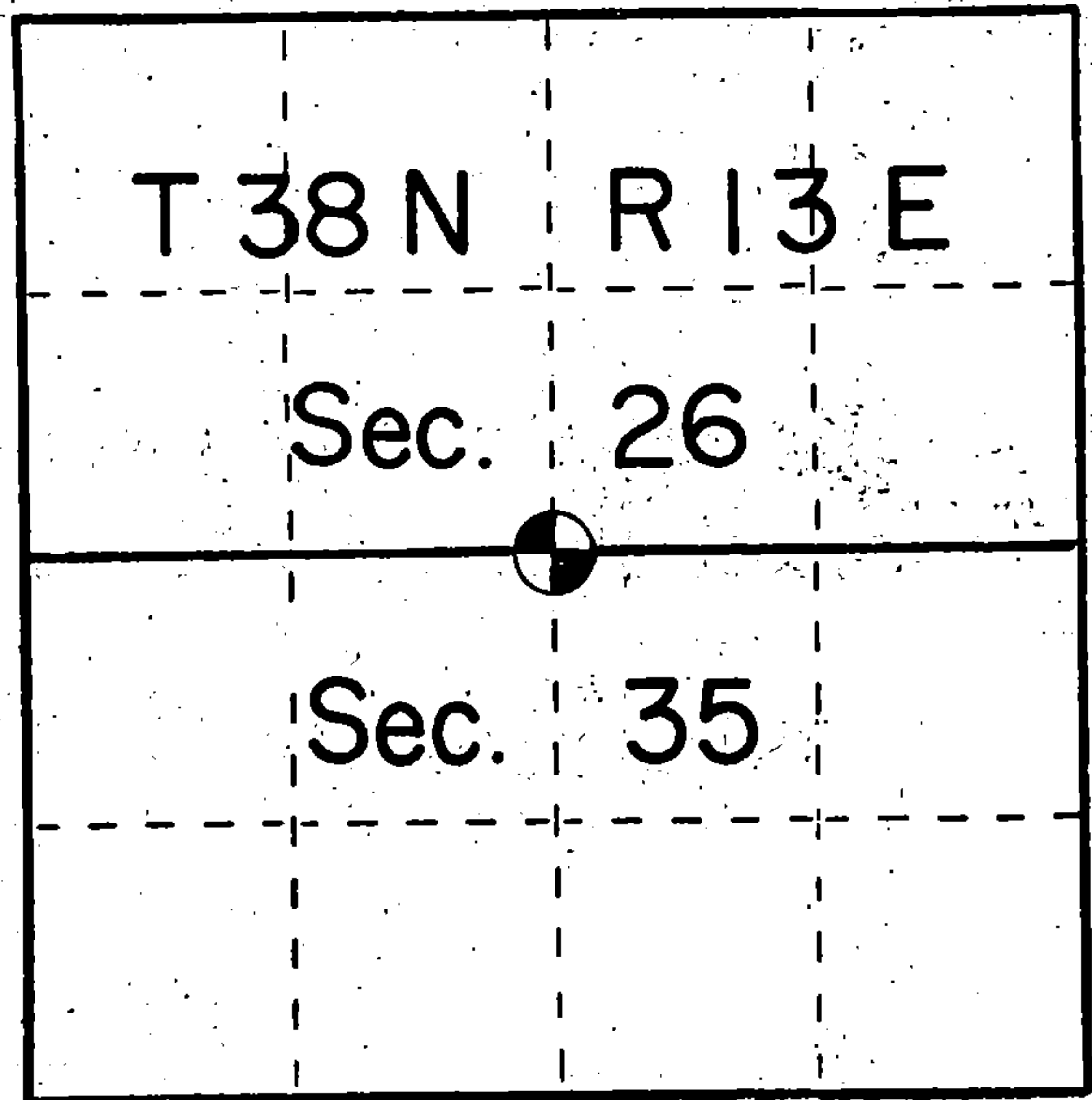
U. S. PUBLIC LAND SURVEY MONUMENT RECORD

I N S T R U C T I O N S : This record shall show the location of the corner and shall include all of the following nine elements (a through i).

(a) Identify the corner by reference to the U.S. public land survey system:

○ = Corner monument restored.

Quarter corner between Sections 26-35, T38N, R13E, Forest County, Wisconsin



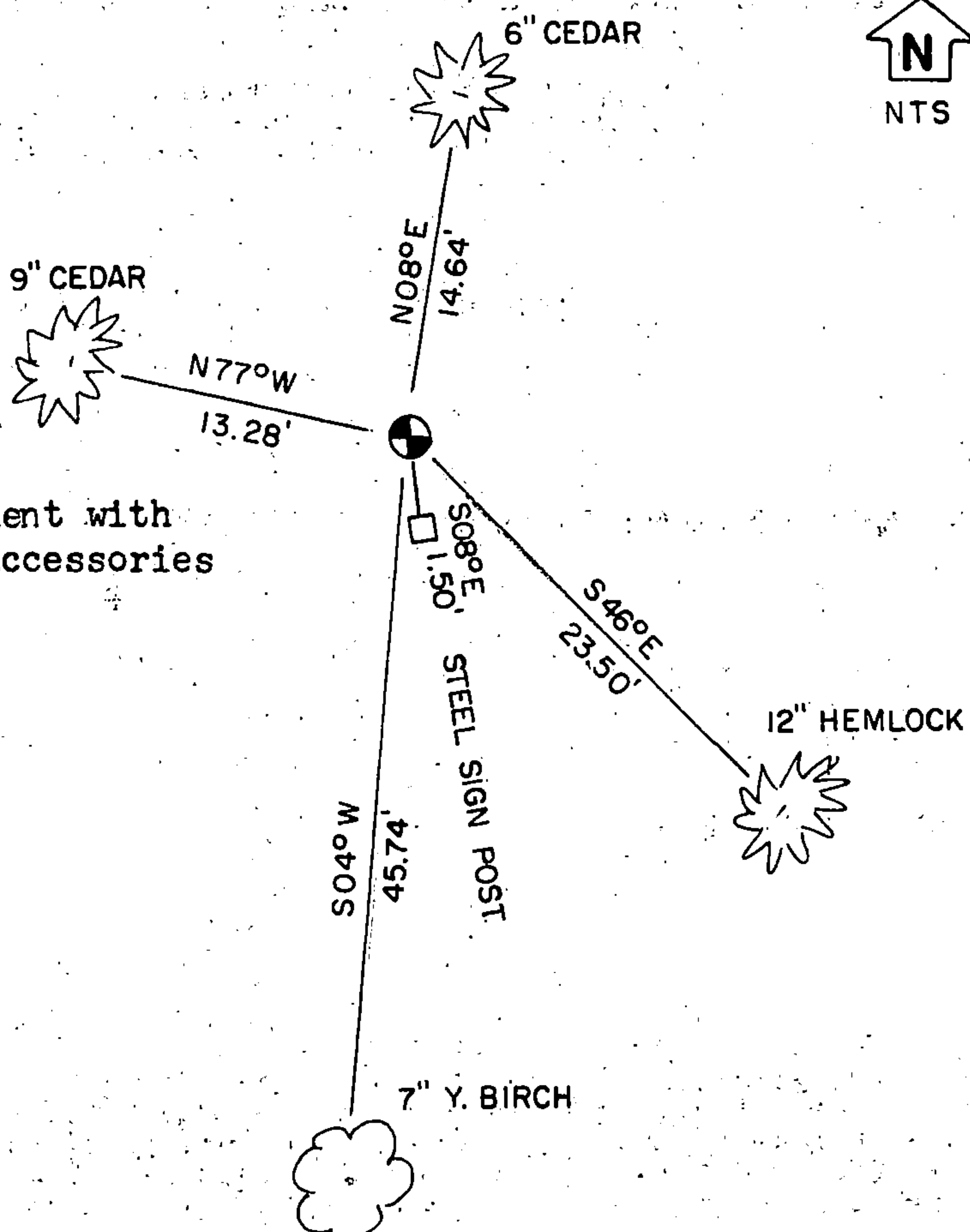
(b) Describe any record evidence, monument evidence, occupational evidence, testimonial evidence or any other material evidence you considered, and whether the monument was found or placed.

In 1865 Nowlin set a wood post with:
 Birch 10" S73W 9 links
 Birch 8" S33W 7 links

Found no evidence of original corner location. Blazed lines running east-west were located to the north at 40' and 100' but no corner. I set this corner by lost methods of single proportionate measure.

(c) In the plan view drawing below, provide reference ties to at least 4 witness monuments, or, if the location is within a municipality, to at least 2 witness monuments. (Witness monuments shall be made of concrete, natural stone, iron or other equally durable material.) Describe witness monuments.

(d) Show a plan view drawing depicting the relevant monuments and reference ties which is sufficient in detail to enable accurate relocation of the corner monument if the corner monument is disturbed. Indicate north.



Set a 2"x 60" Aluminum monument with cap stamped for corner and accessories set to USFS standards.

REGISTER'S OFFICE
 Forest County, Wis.
 Received for record this: 7th day
 of August A.D., 1985 at
3:00 o'clock P. M. and recorded
 in Vol. CORNER RESTORATIONS
 page V-19
Paul Aschenbrenner
 Register of Deeds

- (e) Describe any material discrepancy between the location of the corner as restored or reestablished and the location of that corner as previously restored or reestablished by distance and direction. Show the discrepancy on the plan view drawing under (d), above. Show the distances between the corner as previously restored or reestablished and (1) the corner as restored or reestablished, and (2) to at least 2 of the witness monuments shown on the drawing in (d), above.

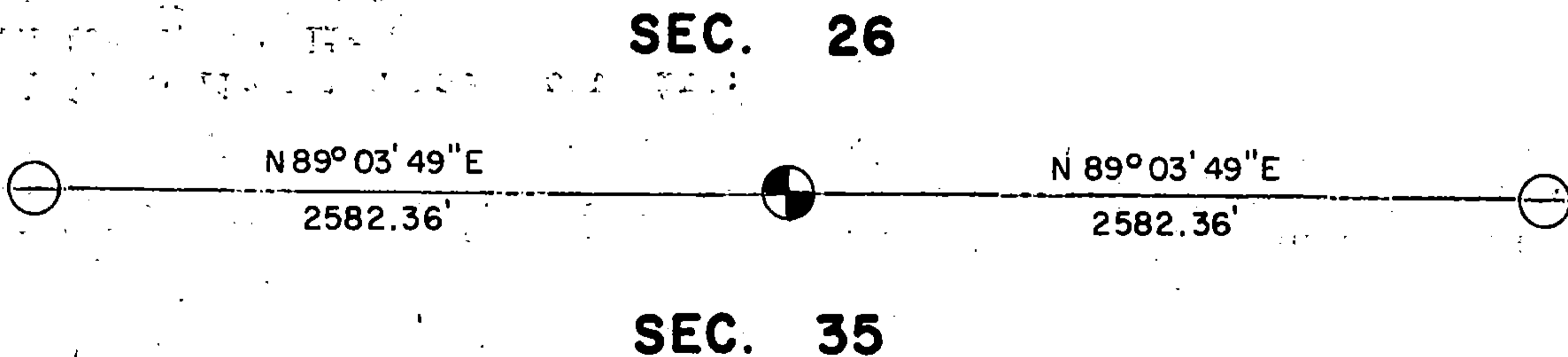
No discrepancy

- (f) Was the corner restored through acceptance of (1) an obliterated evidence location, or, (2) a found perpetuated location?

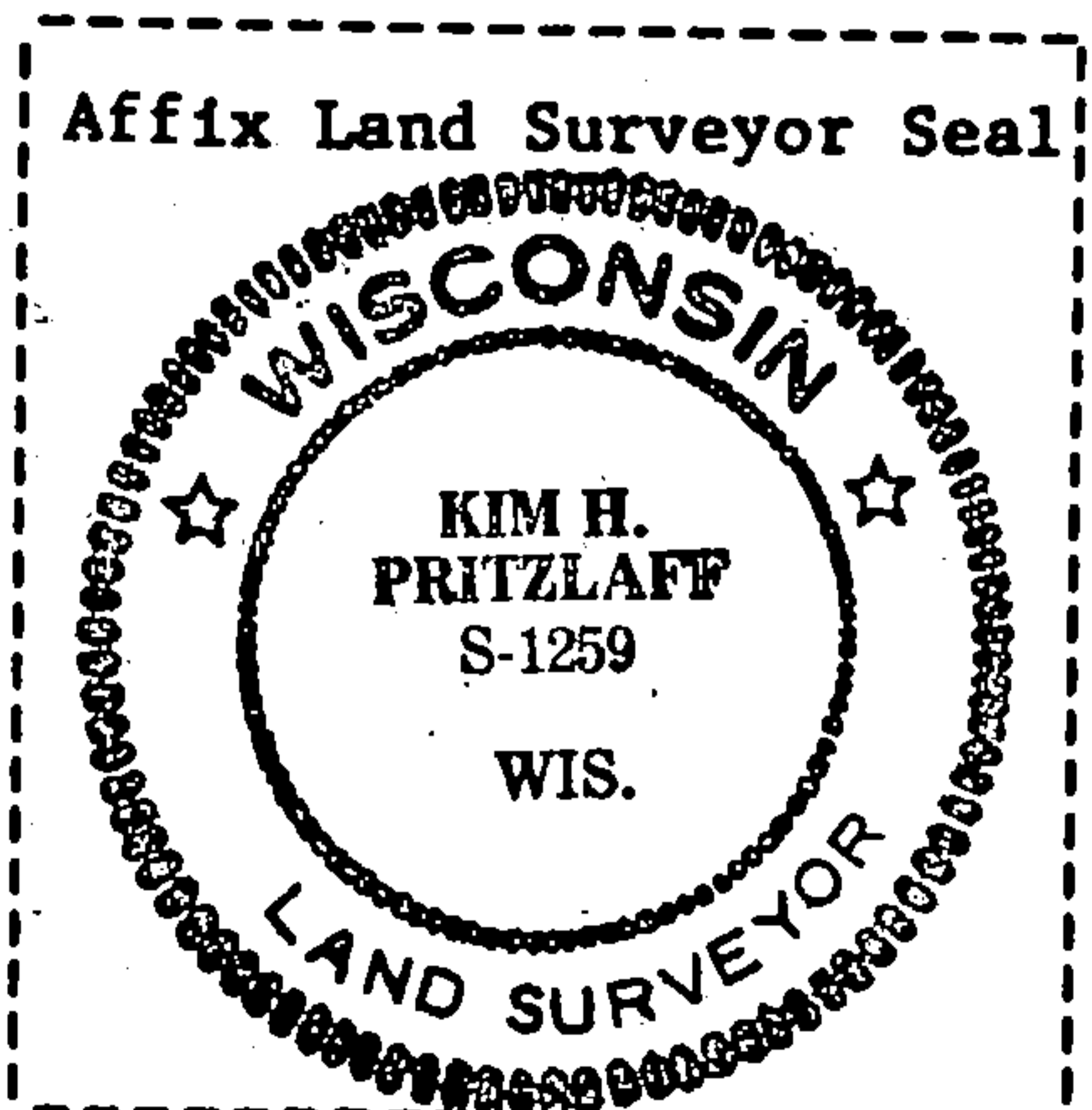
Obliterated evidence location

- (g&h) Was the corner reestablished through lost corner proportionate methods? If so, show the method, including the directions and distances to other public land survey corners used as evidence or used for proportioning in determining the corner location?

Lost methods of single proportionate measure between the northwest and northeast corners of Section 35.



Kim H Pritzlaff



- (i) I, Kim H Pritzlaff (type or print name) certify that the corner location shown on this record was determined by me or under my direction and control and that this U.S. Public Land Survey Monument Record is correct and complete to the best of my knowledge and belief.

Signature

Date

Kim H Pritzlaff 12-12-84