

U.S. PUBLIC LAND SURVEY MONUMENT RECORD

Index No. P-17.....

State of Wisconsin }  
County of Forest } ss.

I, Milo E. Stefan, do hereby certify that on the 6th day of June, 1990, I found evidence of the restored the W. 1/4 corner of Section 23 Township 38 North, Range 13 East, Fourth Principal Meridian, as described hereon; and that from this evidence I established a new monument and accessories as described hereon to perpetuate the original location of this corner.

Resident witnesses:

Myron Smith  
.....  
.....  
.....

History of original corner establishment:

1865, H. & J. L. Nowlin established this corner, set a wood post and two BTs:  
8" Sugar, N50°W, 27 Links                      5" Ironwood, S59°E, 18 Links

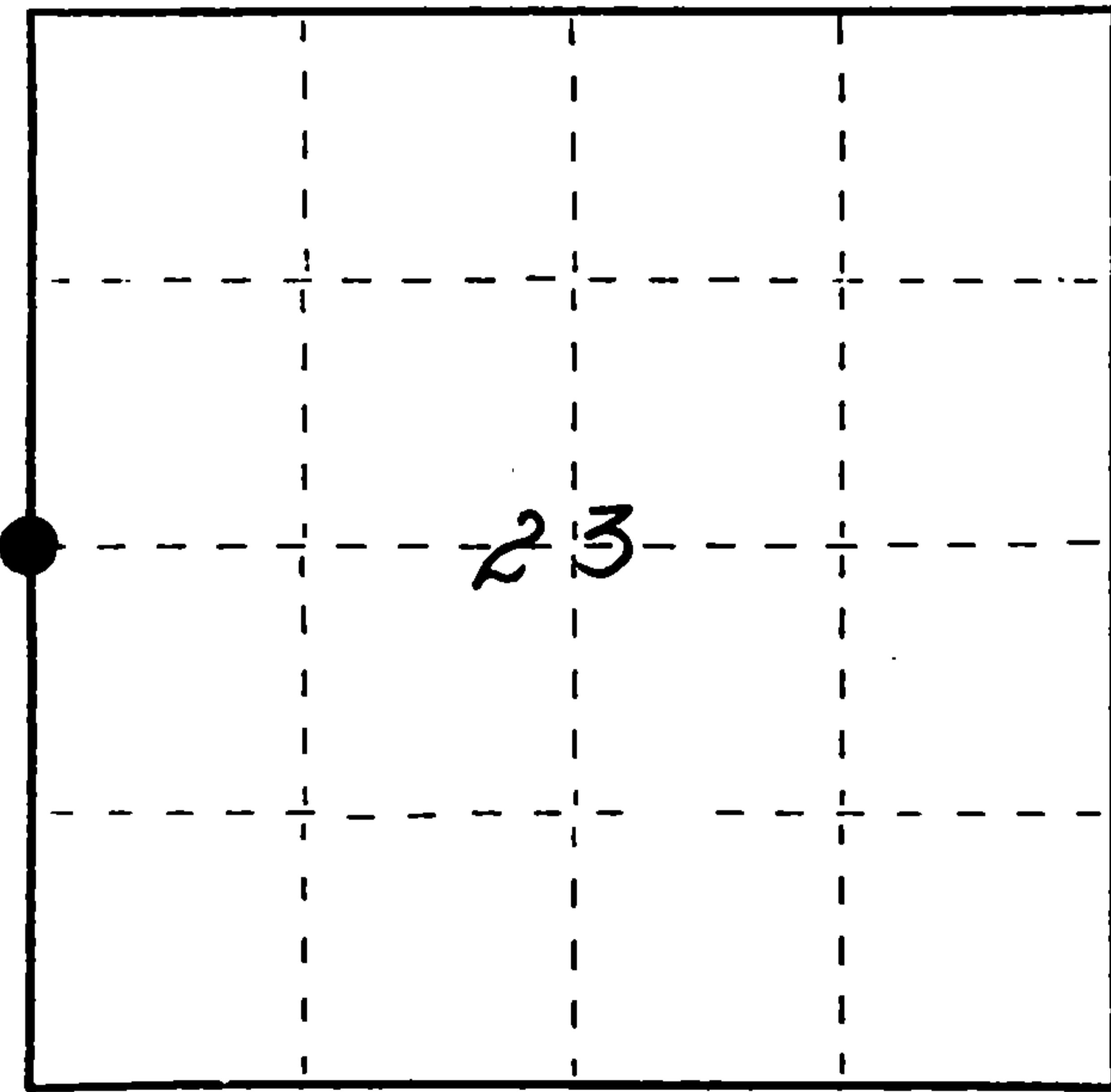
Description of corner evidence found:

Corner was destroyed during construction of Highway #55 many years ago. I declare this corner as "lost" and restore it by Lost Methods, "Single Proportionate Measurement".

Description of monument and accessories I established to perpetuate the original location of this corner.

I placed a railroad spike in blacktop surface of the highway with Reference Corner, West, 49.78 feet. Reference Corner is a 2 1/2" x 36" Aluminum Monument in mound of stone. BTs to Section Corner:

6" Sugar Maple, N58°E, 79.40'                      10" Sugar Maple, S73°E, 56.26'  
6" Sugar Maple, S75°W, 89.28'                      6" Sugar Maple, N39°W, 68.74'  
6' Steel Sign Post is West of Reference Corner 1.6'



● = Corner monument restored.

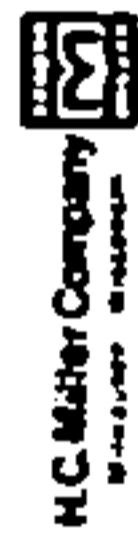
Dated at Rhinelander, Wis., this 9th day of July, 1990

Signature *Milo E. Stefan* Title Land Surveyor Registration No. 1558  
(County Surveyor, Registered Land Surveyor, or other duly authorized official)

Office of Register of Deeds, County of Forest I hereby certify that the within instrument was filed in this office for record on the 10th day of December, 1991 at 10:15 o'clock A. M.

(Register of Deeds)  
By *Earl Chitko* Deputy

FORM NO. 985-A



Stock No. 26273  
DOCUMENT NUMBER  
143397

43813222000

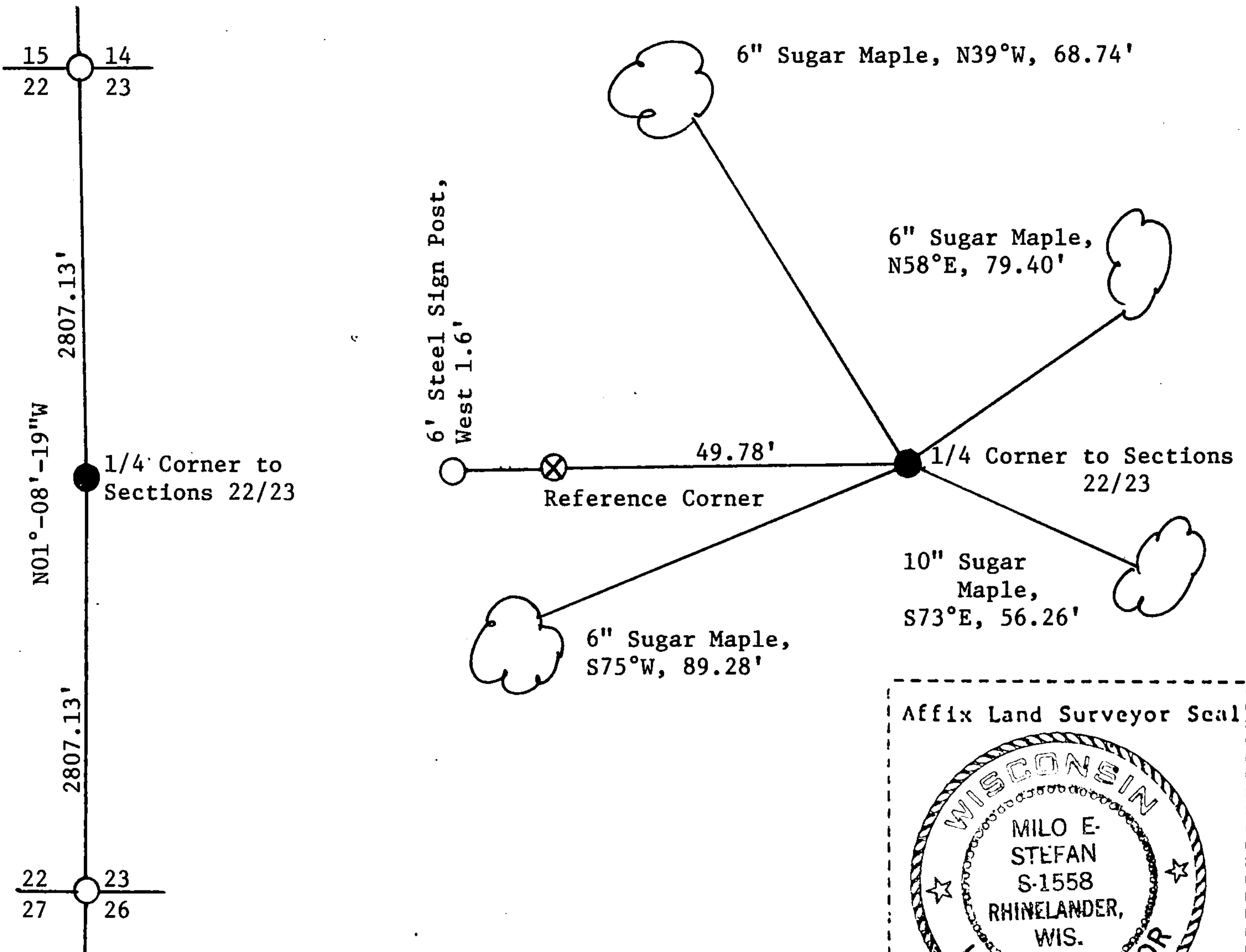
e) Describe any material discrepancy between the location of the corner as restored or reestablished and the location of that corner as previously restored or reestablished by distance and direction. Show the discrepancy on the plan view drawing under (d), above. Show the distances between the corner as previously restored or reestablished and (1) the corner as restored or reestablished; and (2) to at least 2 of the witness monuments shown on the drawing in (d), above.

None

(f) Was the corner restored through acceptance of (1) an obliterated evidence location, or, (2) a found perpetuated location?

N/A

(g&h) Was the corner reestablished through lost corner proportionate methods? If so, show the method, including the directions and distances to other public land survey corners used as evidence or used for proportioning in determining the corner location?



(i) Milo E. Stefan  
 (type or print name) certify that the corner location shown on this record was determined by me or under my direction and control and that this U.S. Public Land Survey Monument Record is correct and complete to the best of my knowledge and belief.

Milo E. Stefan  
 Signature

7/9/90  
 Date

Survey requested by: Doris Staege  
 District Ranger.

6/4/91  
 Date

Document Number

210310

REGISTER'S OFFICE  
Forest County, Wis.

Received for record this 25<sup>th</sup> day  
of October A.D., 2012 at  
11:00 o'clock A.M. and recorded  
in Vol. Corner Restoration  
page P-17

*Jeffrey L. DeMuth*  
Register of Deeds

U.S. PUBLIC LAND SURVEY MONUMENT RECORD

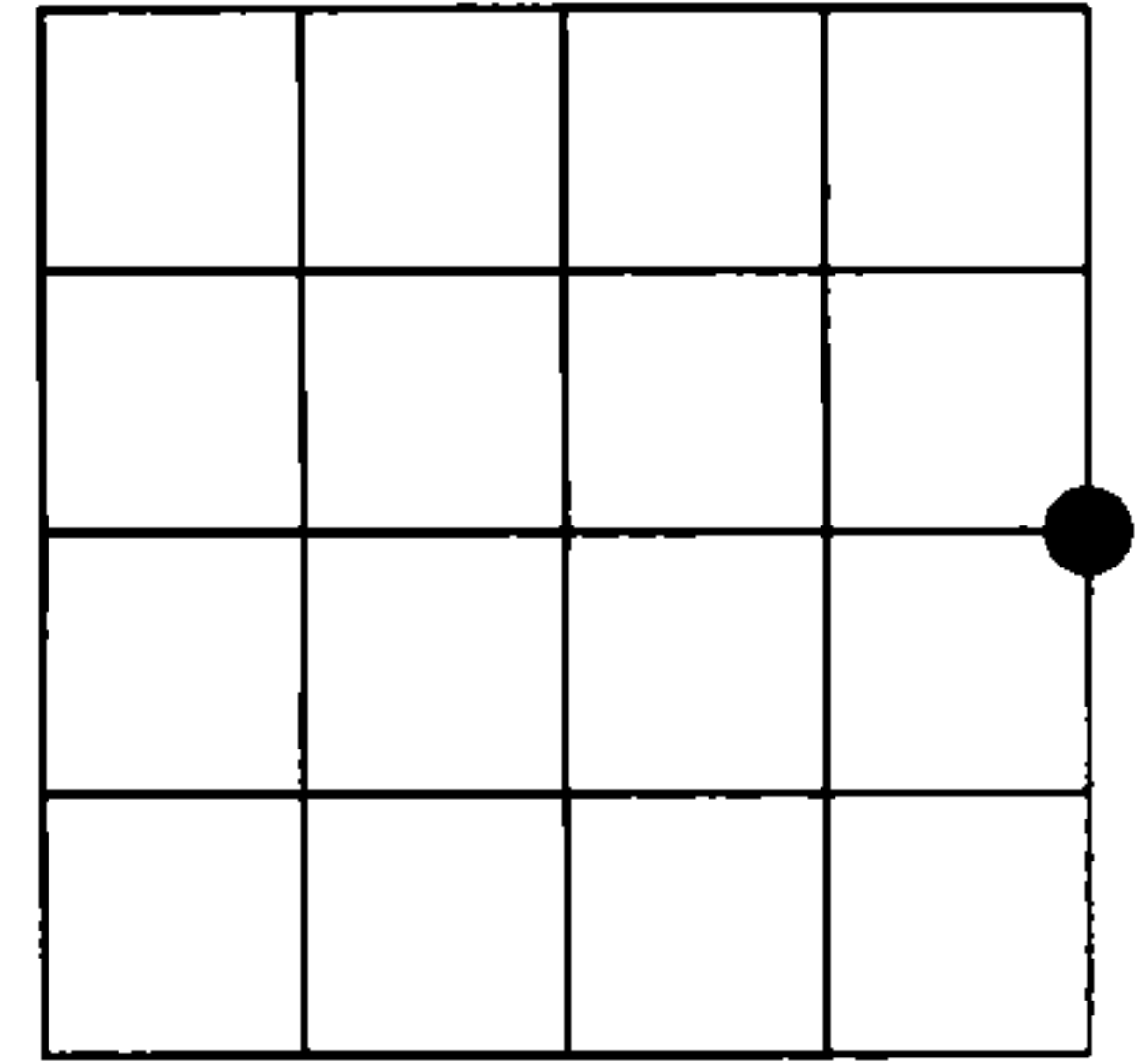
NOTE: This form is intended and designed to fulfill all requirements of Wisconsin Administrative Code, Chapter A-E 7.08 U.S. Public Land Survey Monument Record (3)(a)(b)(c)(d)(e)(f)(g)(h)(i). An additional sheet may be added if necessary to conform with said requirements.

(a) Corner location: Township 38 North

Range 13 East

Town of Argonne

Forest County, Wisconsin



Section 22

(b)(f)(g)(h) Description of monument found at this corner and if it was accepted, state all evidence (material, testimonial, occupational, plats, records, other monuments) used as a basis for accepting. If not accepted or if nothing was found, state evidence used as basis for establishing location. If reestablished through lost corner proportionate methods, indicate all monuments, distances and directions used to establish. Indicate type of monument found or set and sign post.

AUGUST 1865 - JAMES NOWLIN SET POST COMMON TO SECTIONS 22 AND 23.

JULY 1990- MILO E. STEFAN:

DECLARED THE CORNER AS LOST AND PLACED A RAILROAD SPIKE IN THE SURFACE OF S.T.H. 55 BY SINGLE PROPORTIONATE MEASUREMENT, AND WITNESSED THE MONUMENT AS SHOWN ON USPLS LAND SURVEY MONUMENT RECORD, INDEX NO. P-17.

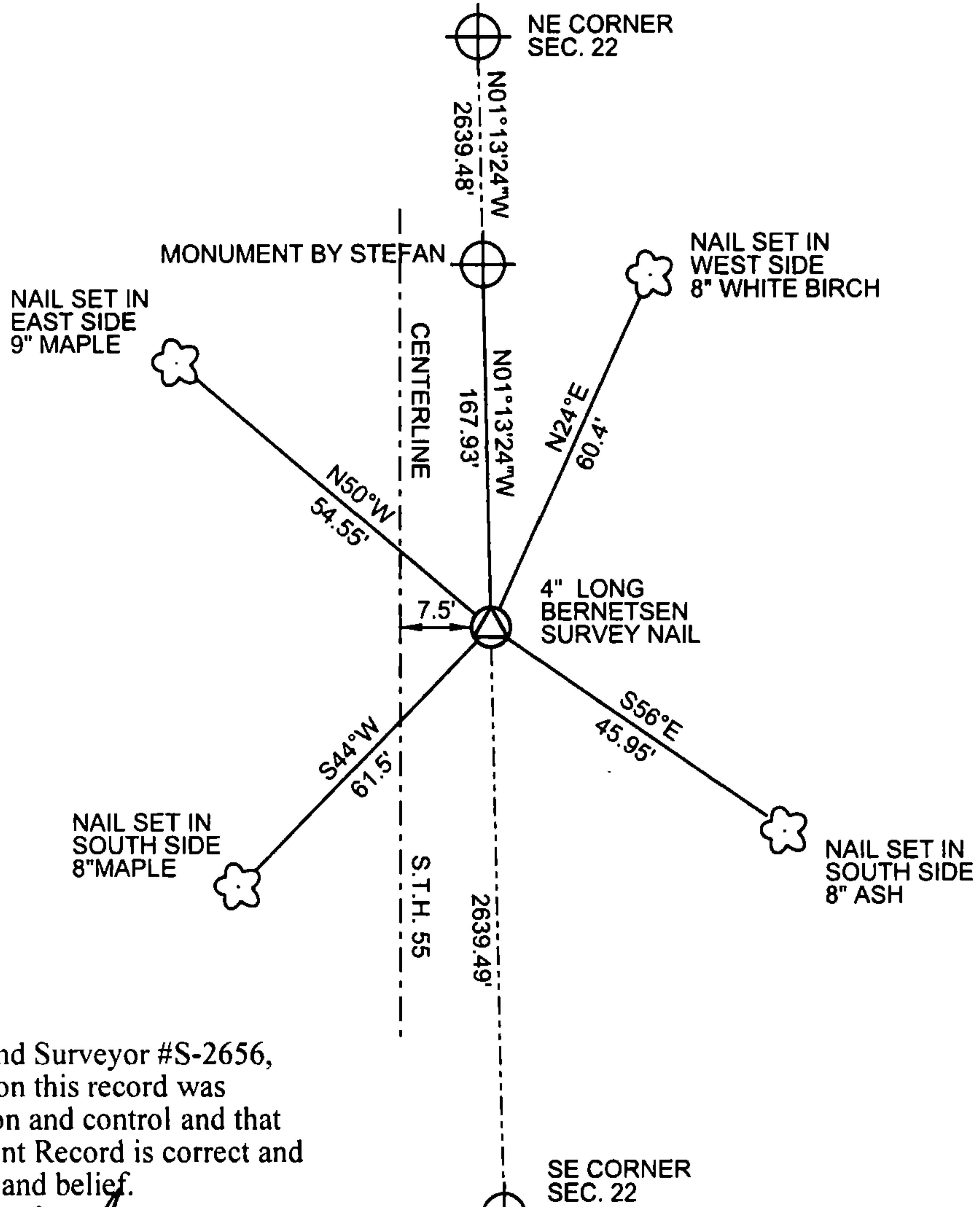
JUNE, 2012 - I FOUND AND REJECTED MILO'S 1990 CORNER, BECAUSE IT'S POSITION

DISAGREES WITH THE TOPOGRAPHIC CALLS FROM THE ORIGINAL SURVEY NOTES FOR THE NORTHEAST CORNER AND SOUTHEAST CORNER OF SECTION 22.

I DECLARE THIS CORNER AS LOST, AND ESTABLISH IT'S POSITION BY SINGLE PROPORTION BETWEEN THE NORTHEAST CORNER AND SOUTHEAST CORNER OF SECTION 22.

I SET A 4" LONG, BERNTSEN SURVEY NAIL IN THE SURFACE OF S.T.H. 55 AND WITNESSES AS SHOWN BELOW.

(c)(d)(e) Plan view of corner with ties to at least 4 witness monuments. If in disagreement with previously established corner, show the distances between the two corners and also indicate the ties to the disputed corner.



(i) I, Jeffrey L DeMuth, Registered Land Surveyor #S-2656, hereby certify that the corner location on this record was determined by me or under my direction and control and that this U.S. Public Land Survey Monument Record is correct and complete to the best of my knowledge and belief.

Signature

Date

*Jeffrey L. DeMuth*  
10/16/2012

Index No.

P-17