

Document Number

210297

REGISTER'S OFFICE
Forest County, Wis.
Received for record this 24th day
of October A.D., 2012 at
11:00 o'clock A.M. and recorded
to Vol Corner Restoration
B-15
Jeffrey L DeMuth
Register of Deeds

U.S. PUBLIC LAND SURVEY MONUMENT RECORD

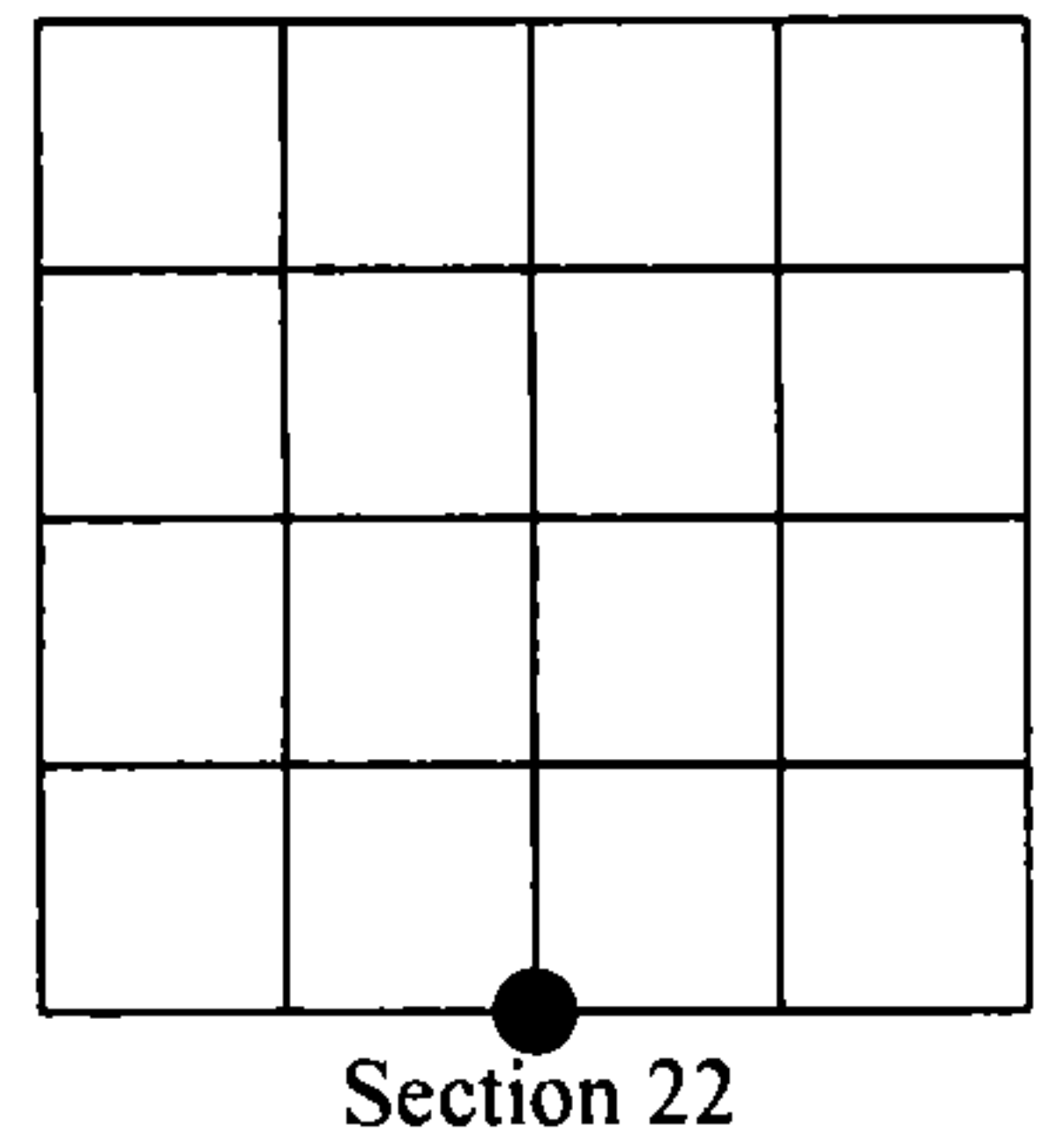
NOTE: This form is intended and designed to fulfill all requirements of Wisconsin Administrative Code, Chapter A-E 7.08 U.S. Public Land Survey Monument Record (3)(a)(b)(c)(d)(e)(f)(g)(h)(i). An additional sheet may be added if necessary to conform with said requirements.

(a) Corner location: Township 38 North

Range 13 East

Town of Argonne

Forest County, Wisconsin



(b)(f)(g)(h) Description of monument found at this corner and if it was accepted, state all evidence (material, testimonial, occupational, plats, records, other monuments) used as a basis for accepting. If not accepted or if nothing was found, state evidence used as basis for establishing location. If reestablished through lost corner proportionate methods, indicate all monuments, distances and directions used to establish. Indicate type of monument found or set and sign post.

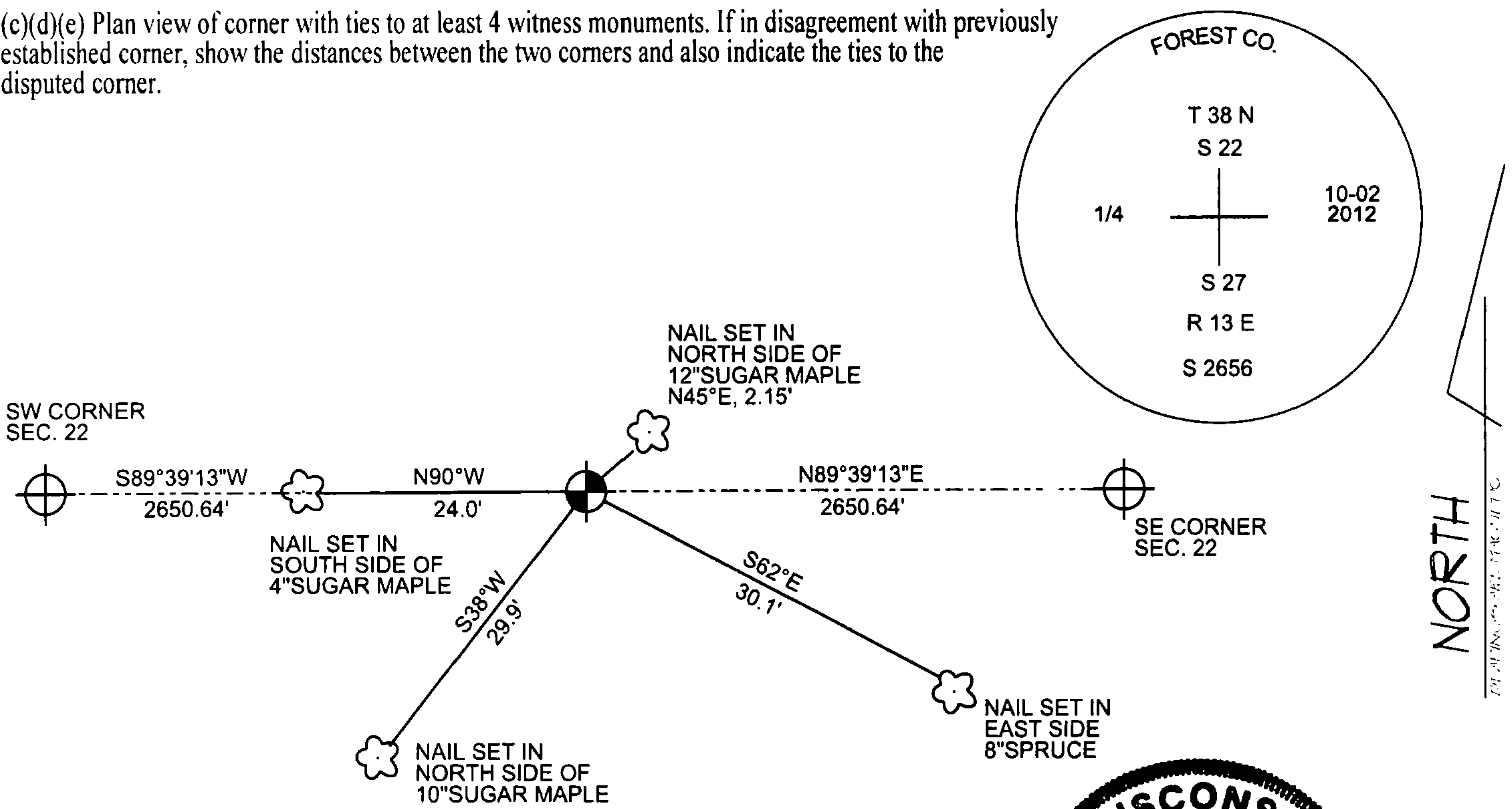
AUGUST 1865 - JAMES NOWLIN SET POST COMMON TO SECTIONS 22 AND 27

AUGUST 22, 2012 - I FIND NO EVIDENCE OF THE ONE QUARTER CORNER POST OR IT'S BEARING TREE'S. I DECLARE THIS CORNER TO BE LOST, AND ESTABLISH IT'S POSITION BY SINGLE PROPORTION BETWEEN THE SOUTHWEST CORNER AND THE SOUTHEAST CORNER OF SECTION 22.

THIS POSITION AGREES WITH THE ORIGINAL TOPOGRAPHIC CALL FOR A SWAMP EDGE TO THE EAST AND WEST.

10/02/2012 - I SET A 2 1/4" DIAMETER X 30" LONG FOREST COUNTY ALUMINUM MONUMENT STAMPED TO IDENTIFY CORNER AND WITNESSED AS SHOWN BELOW.

(c)(d)(e) Plan view of corner with ties to at least 4 witness monuments. If in disagreement with previously established corner, show the distances between the two corners and also indicate the ties to the disputed corner.



(i) I, Jeffrey L DeMuth, Registered Land Surveyor #S-2656, hereby certify that the corner location on this record was determined by me or under my direction and control and that this U.S. Public Land Survey Monument Record is correct and complete to the best of my knowledge and belief.



Handwritten signature of Jeffrey L. DeMuth.

10/10/2012
Date

Index No. R-15