

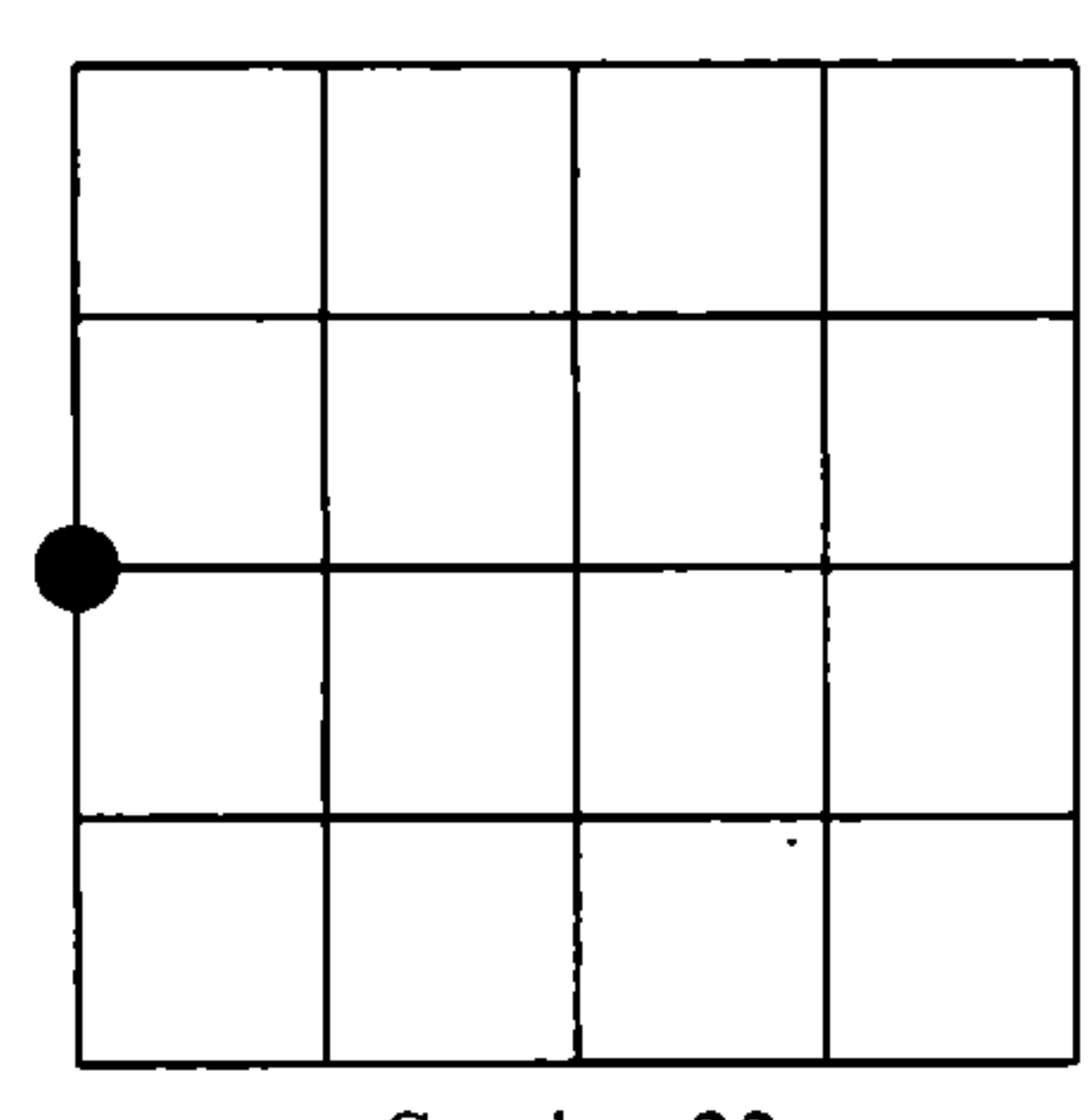
REGISTER'S OFFICE  
 Forest County, Wis.  
 Received for record this 24<sup>th</sup> day  
 of October A.D., 2012 at  
11:00 o'clock A.M. and recorded  
 in Vol. Corner Restoration  
 page P-15  
*Jeffrey L. DeMuth*  
 Register of Deeds

**Document Number**  
**210299**

# U.S. PUBLIC LAND SURVEY MONUMENT RECORD

NOTE: This form is intended and designed to fulfill all requirements of Wisconsin Administrative Code, Chapter A-E 7.08 U.S. Public Land Survey Monument Record (3)(a)(b)(c)(d)(e)(f)(g)(h)(i). An additional sheet may be added if necessary to conform with said requirements.

(a) Corner location: Township 38 North  
 Range 13 East  
 Town of Argonne  
 Forest County, Wisconsin

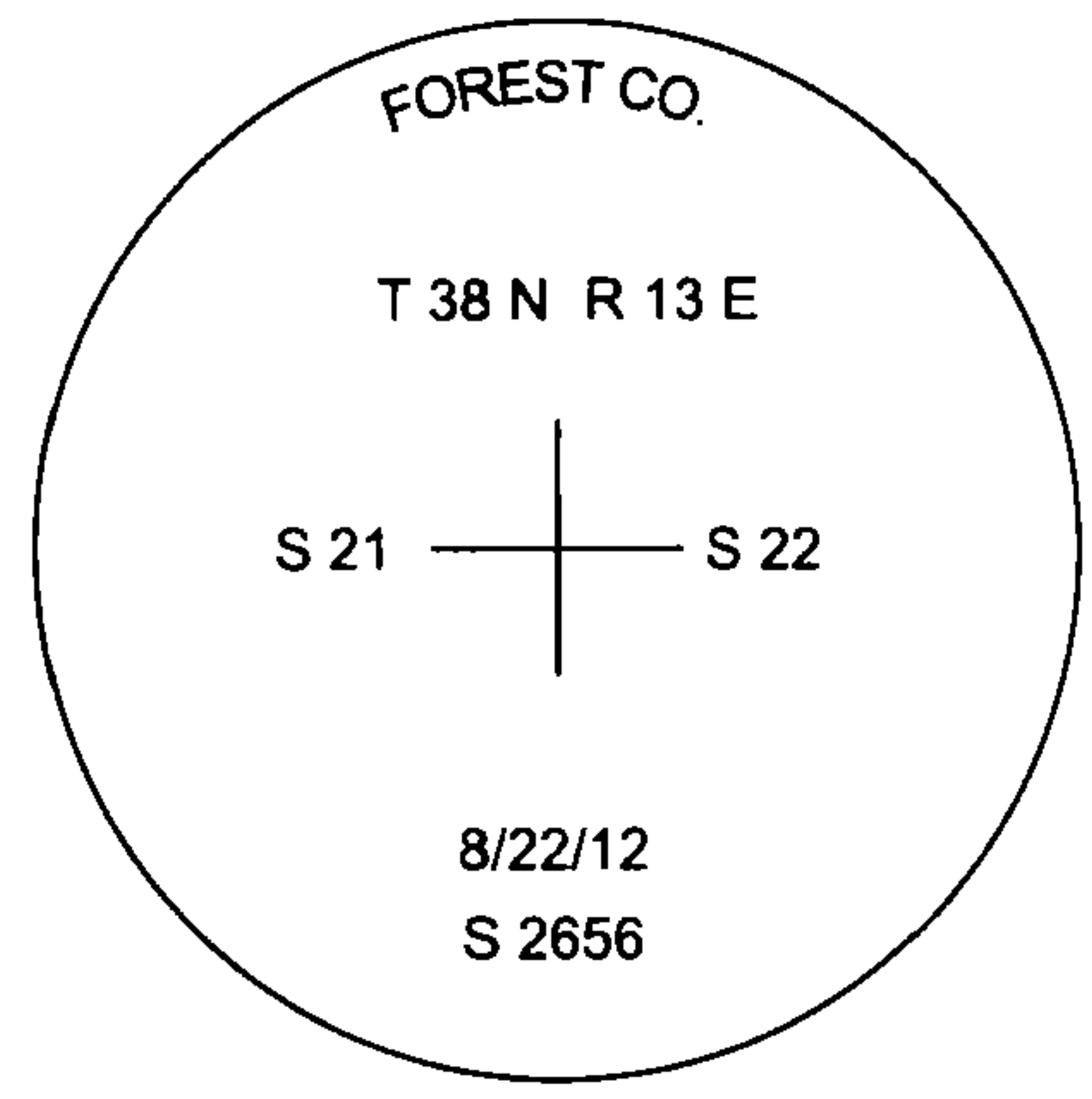
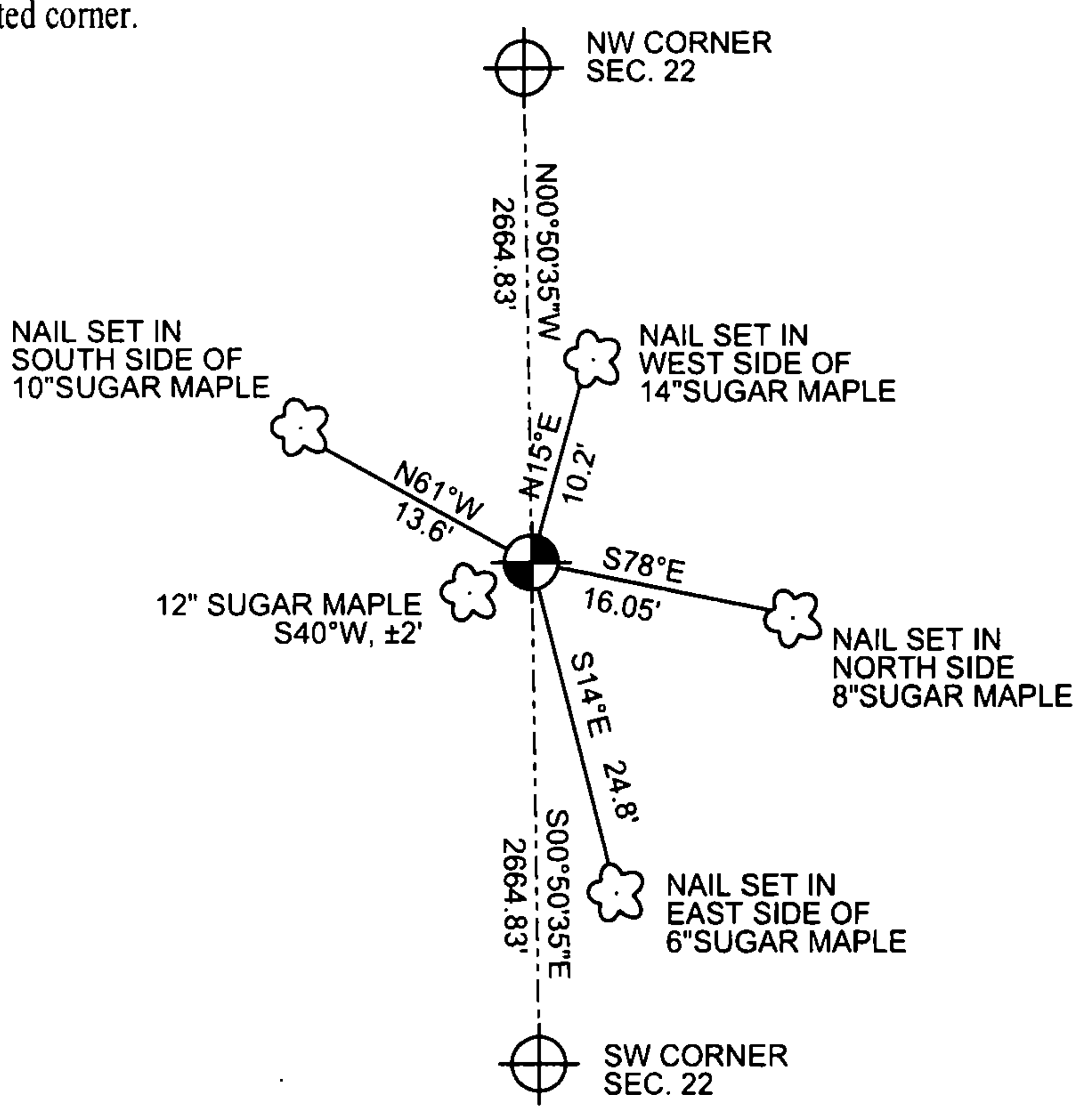


Section 22

(b)(f)(g)(h) Description of monument found at this corner and if it was accepted, state all evidence (material, testimonial, occupational, plats, records, other monuments) used as a basis for accepting. If not accepted or if nothing was found, state evidence used as basis for establishing location. If reestablished through lost corner proportionate methods, indicate all monuments, distances and directions used to establish. Indicate type of monument found or set and sign post.

AUGUST 1865 - JAMES NOWLIN SET POST COMMON TO SECTIONS 21 AND 22  
 AUGUST 22, 2012 - I FIND A NORTH-SOUTH BLAZED LINE PAINTED BLUE AND NO OTHER EVIDENCE OF THE ONE QUARTER CORNER POST. I DECLARE THIS CORNER TO BE LOST, AND ESTABLISH IT'S POSITION BY SINGLE PROPORTION BETWEEN THE NORTHWEST CORNER AND THE SOUTHWEST CORNER OF SECTION 22.  
 08/22/2012 - I SET A 2 1/4" DIAMETER X 30" LONG FOREST COUNTY ALUMINUM MONUMENT STAMPED TO IDENTIFY CORNER, AND WITNESSES AS SHOWN BELOW.  
 THIS POSITION FALLS ON THE NORTH-SOUTH BLUE LINE AND AGREES WITH THE ORIGINAL TOPOGRAPHIC CALL FOR A SWAMP EDGE TO THE NORTH.

(c)(d)(e) Plan view of corner with ties to at least 4 witness monuments. If in disagreement with previously established corner, show the distances between the two corners and also indicate the ties to the disputed corner.



NORTH

(i) I, Jeffrey L DeMuth, Registered Land Surveyor #S-2656, hereby certify that the corner location on this record was determined by me or under my direction and control and that this U.S. Public Land Survey Monument Record is correct and complete to the best of my knowledge and belief.



*Jeffrey L. DeMuth*  
 Signature \_\_\_\_\_ Date 10/16/2012

Index No. P-15