

REGISTER'S OFFICE
 Forest County, Wis.
 Received for record this 24th day
 of October A.D., 2012 at
11:00 o'clock A.M. and recorded
 in Vol. Corner Restoration
 page N-15
Jeffrey L. DeMuth
 Register of Deeds

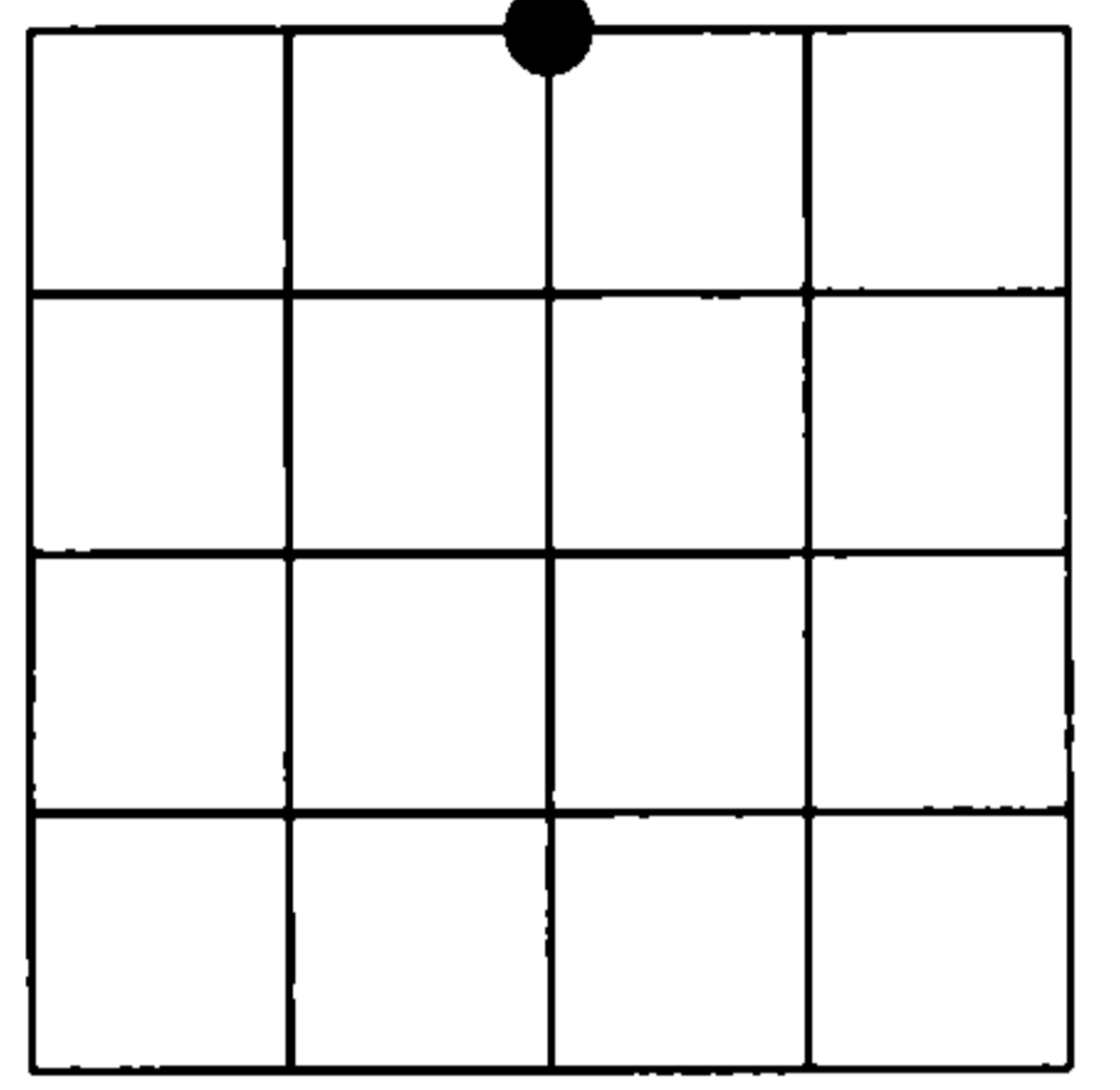
Document Number

210301

U.S. PUBLIC LAND SURVEY MONUMENT RECORD

NOTE: This form is intended and designed to fulfill all requirements of Wisconsin Administrative Code, Chapter A-E 7.08 U.S. Public Land Survey Monument Record (3)(a)(b)(c)(d)(e)(f)(g)(h)(i). An additional sheet may be added if necessary to conform with said requirements.

(a) Corner location: Township 38 North
 Range 13 East
 Town of Argonne
 Forest County, Wisconsin



Section 22

(b)(f)(g)(h) Description of monument found at this corner and if it was accepted, state all evidence (material, testimonial, occupational, plats, records, other monuments) used as a basis for accepting. If not accepted or if nothing was found, state evidence used as basis for establishing location. If reestablished through lost corner proportionate methods, indicate all monuments, distances and directions used to establish. Indicate type of monument found or set and sign post.

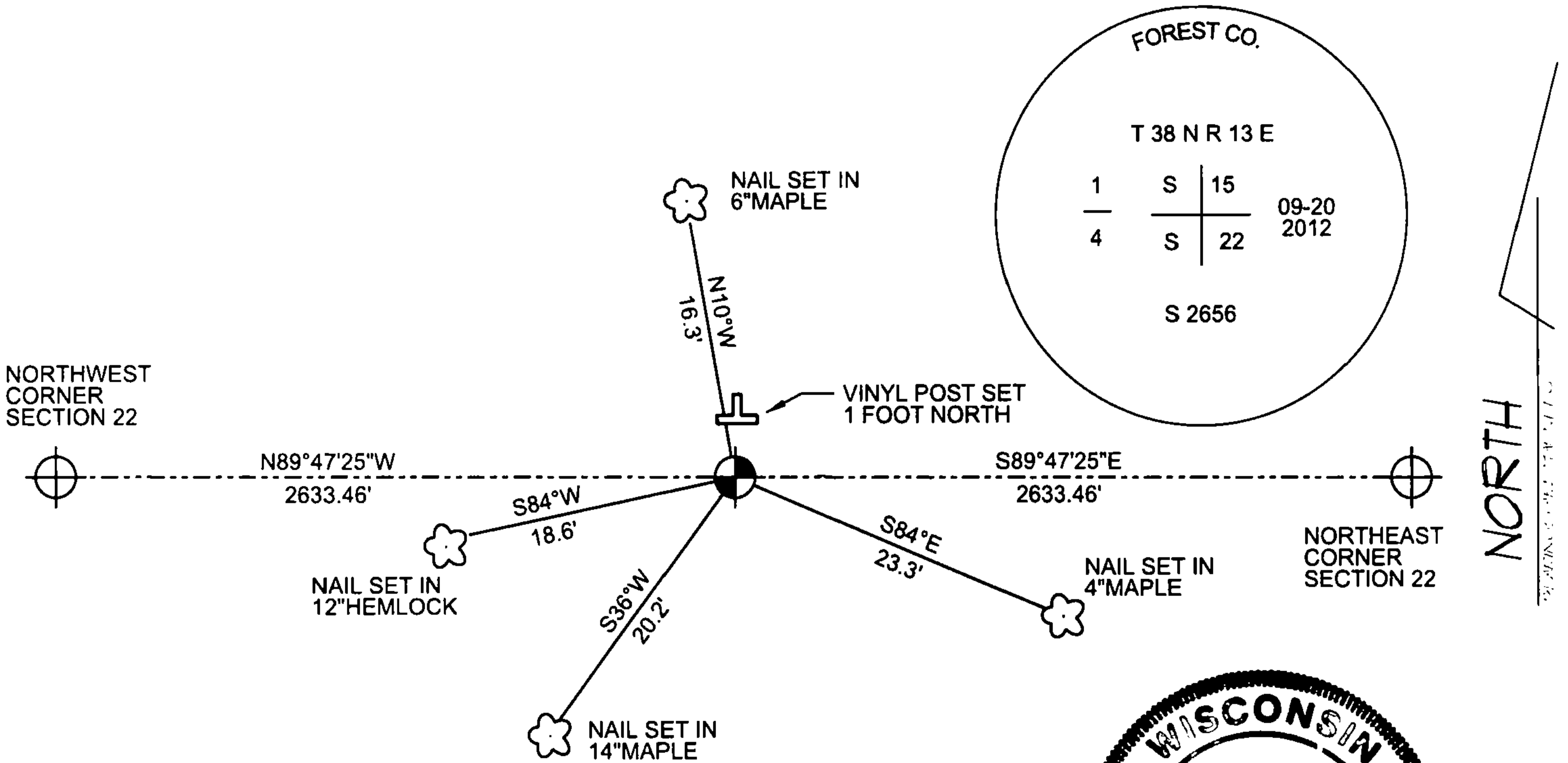
AUGUST 1865 - JAMES NOWLIN SET POST COMMON TO SECTIONS 22 AND 15

JUNE, 2012 - SEPTEMBER 2012
 I FIND NO EVIDENCE OF THE ORIGINAL ONE QUARTER POST OR ITS BEARING TREES.

I DECLARE THIS CORNER TO BE LOST AND ESTABLISH ITS POSITION BY SINGLE PROPORTION BETWEEN THE NORTHWEST CORNER AND THE NORTHEAST CORNER OF SECTION 22.

09/20/2012 - I SET A 2 1/4" DIAMETER X 30" LONG FOREST COUNTY ALUMINUM MONUMENT STAMPED TO IDENTIFY THE CORNER, AND WITNESS AS SHOWN BELOW.

(c)(d)(e) Plan view of corner with ties to at least 4 witness monuments. If in disagreement with previously established corner, show the distances between the two corners and also indicate the ties to the disputed corner.



(i) I, Jeffrey L DeMuth, Registered Land Surveyor #S-2656, hereby certify that the corner location on this record was determined by me or under my direction and control and that this U.S. Public Land Survey Monument Record is correct and complete to the best of my knowledge and belief.



Jeffrey L. DeMuth
 Signature
 10/16/2012
 Date

Index No.
N-15