

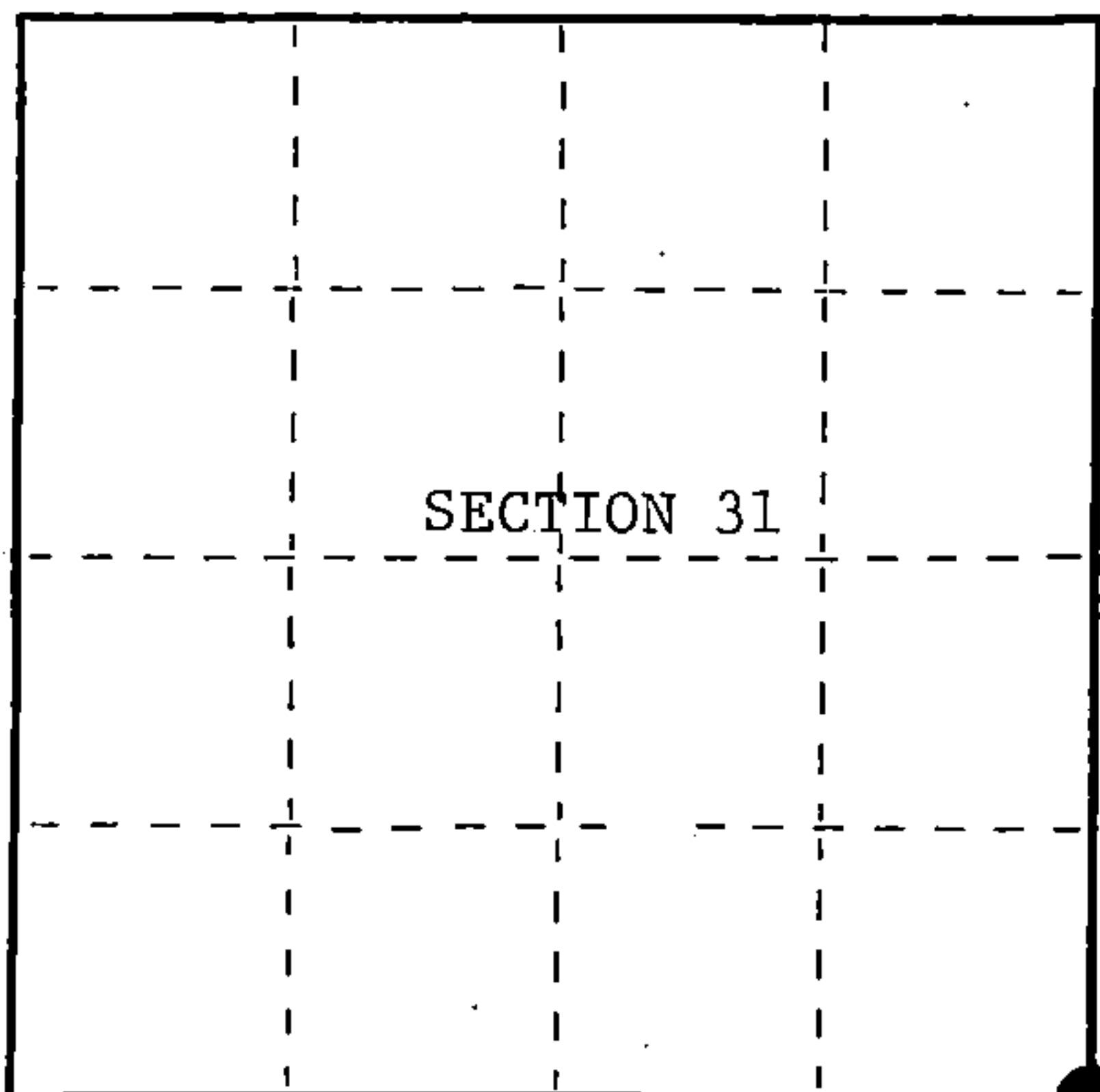
U.S. PUBLIC LAND SURVEY MONUMENT RECORD

Index No. Z-5

State of Wisconsin }
County of Forest } ss.

I, William B. Cochran, do hereby certify that on the 11th day of July, 1988, I found evidence of the Southeast Section corner of Section 31 Township 38, North, Range 12 East, Fourth Principal Meridian, as described hereon; and that from this evidence I established a new monument and accessories as described hereon to perpetuate the original location of this corner.

Resident witnesses:



○ = Corner monument restored.

History of original corner establishment:

Original Government Survey in 1858 by Alfred Millard.

Dependent Resurvey in 1937 by Wesson Cook. In place of old post in mound of stone, set a concrete monument, 24 inches long, 6 inches in diameter, with a brass tablet marked; T38N, R12E, S31, S32, S6, S5, T37N, 1937. From which the following bear;

Hemlock	12"	N84°45'E	59 lks.
Y. Birch	6"	S49°45'E	49 lks.
Hemlock	9"	S28°00'W	49 lks.
Y. Birch	8"	N52°15'W	80 lks.

Description of corner evidence found:

Found monument as described and in place, from which the following bear;

Hemlock(Snag)	14"	N84°45'E	59 lks.(38.94 feet)
Y. Birch	13"	S49°45'E	49 lks.(32.48 feet)
Y. Birch(Snag)	9"	N52°15'W	80 lks.(52.80 feet)

Description of monument and accessories I established to perpetuate the original location of this corner.

Blazed and scribed the following new bearing trees;

Maple	6"	N23°E	28.90 feet
Basswood	9"	S47°W	21.62 feet
Maple	12"	N65°W	23.35 feet
Steel Sign Post		NW	1.00 feet

Dated at Hiles, Wis., this 16th day of February, 1989.

Signature William B. Cochran Title Land Surveyor Registration No. S-1107
(County Surveyor, Registered Land Surveyor, or other duly authorized official)

Office of Register of Deeds, County of Forest
I hereby certify that the within instrument was filed in this office for record on the 7th day of March, 1989
at 9:55 o'clock A. M.

Paul Aschenbrenner

(Register of Deeds)

By Sandra L. Nedd Deputy

FORM NO. 985-A

H.C. Miller Company
Surveyors & Engineers

Stock No. 26273

DOCUMENT NUMBER

137008

43812310000

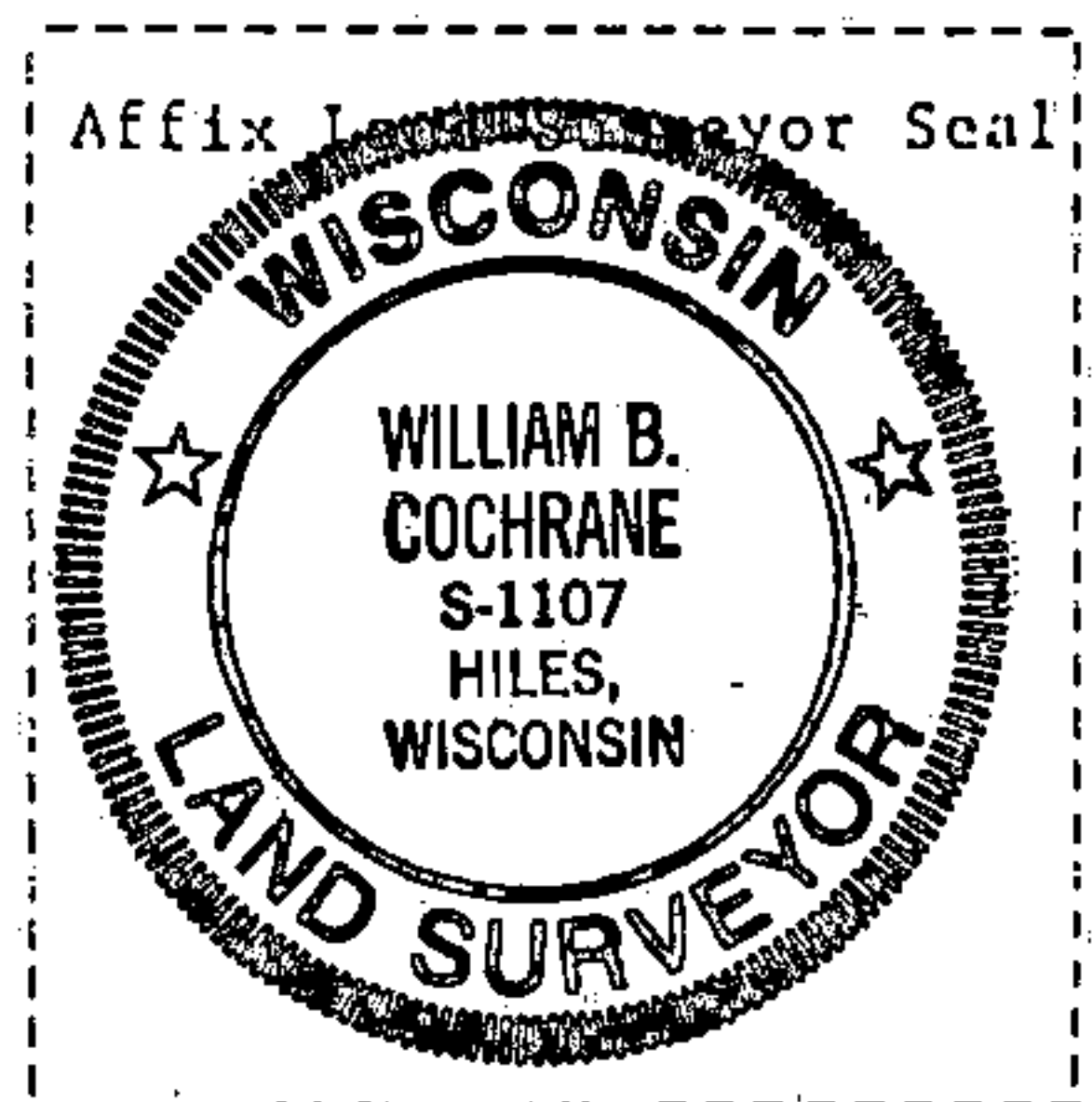
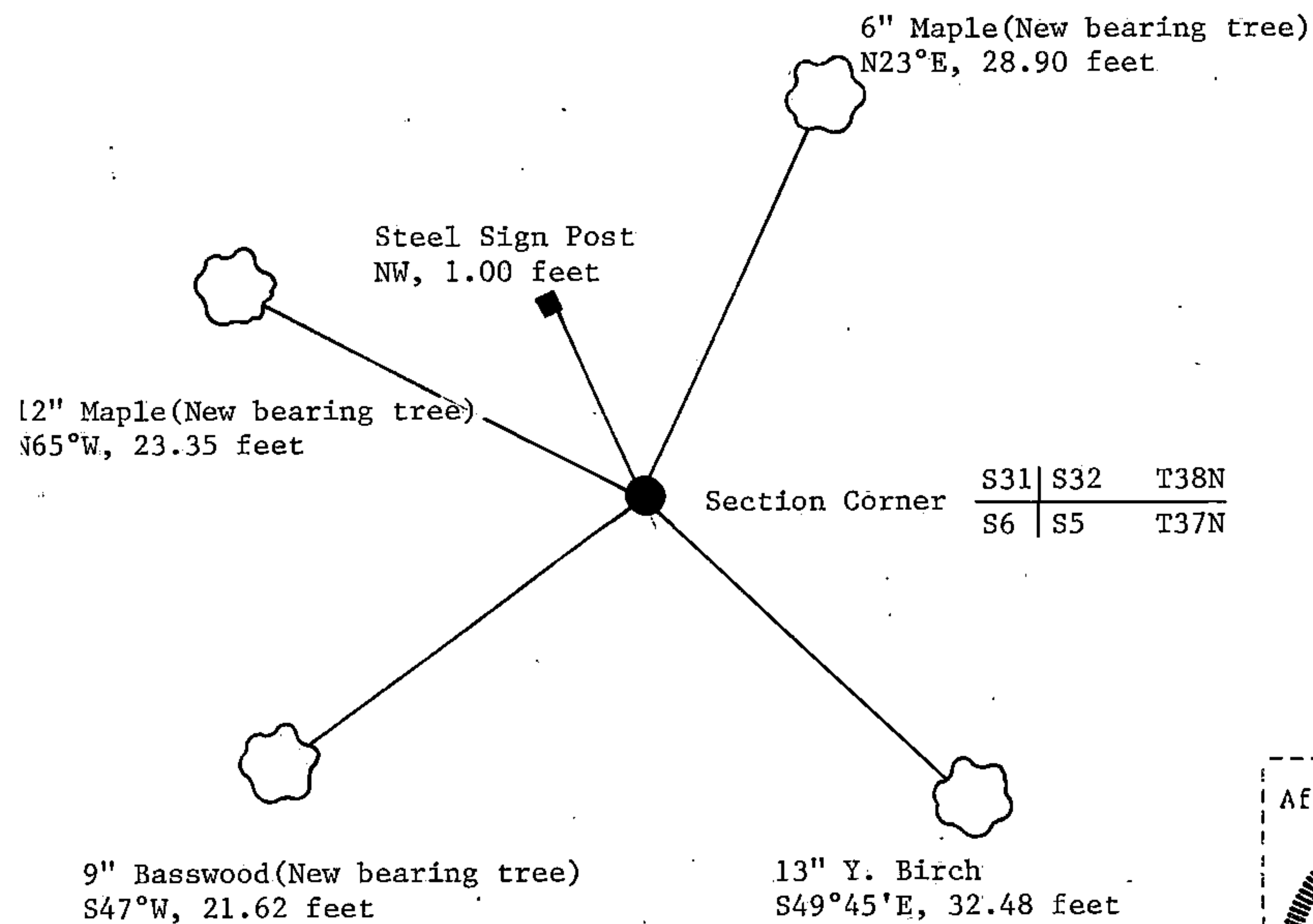
(e) Describe any material discrepancy between the location of the corner as restored or reestablished and the location of that corner as previously restored or reestablished by distance and direction. Show the discrepancy on the plan view drawing under (d), above. Show the distances between the corner as previously restored or reestablished and (1) the corner as restored or reestablished, and (2) to at least 2 of the witness monuments shown on the drawing in (d), above.

See drawing below.

(f) Was the corner restored through acceptance of (1) an obliterated evidence location, or, (2) a found perpetuated location?

Restored through acceptance of a found perpetuated location.

(g&h) Was the corner reestablished through lost corner proportionate methods? If so, show the method, including the directions and distances to other public land survey corners used as evidence or used for proportioning in determining the corner location?



(i) I, William B. Cochrane
(type or print name) certify that the corner location shown
on this record was determined by me or under my direction and
control and that this U.S. Public Land Survey Monument Record is
correct and complete to the best of my knowledge and belief.

William B. Cochrane February 16, 1989
Signature Date

Survey requested by; Pamela Syon 2/27/89

Date of Survey; 1988

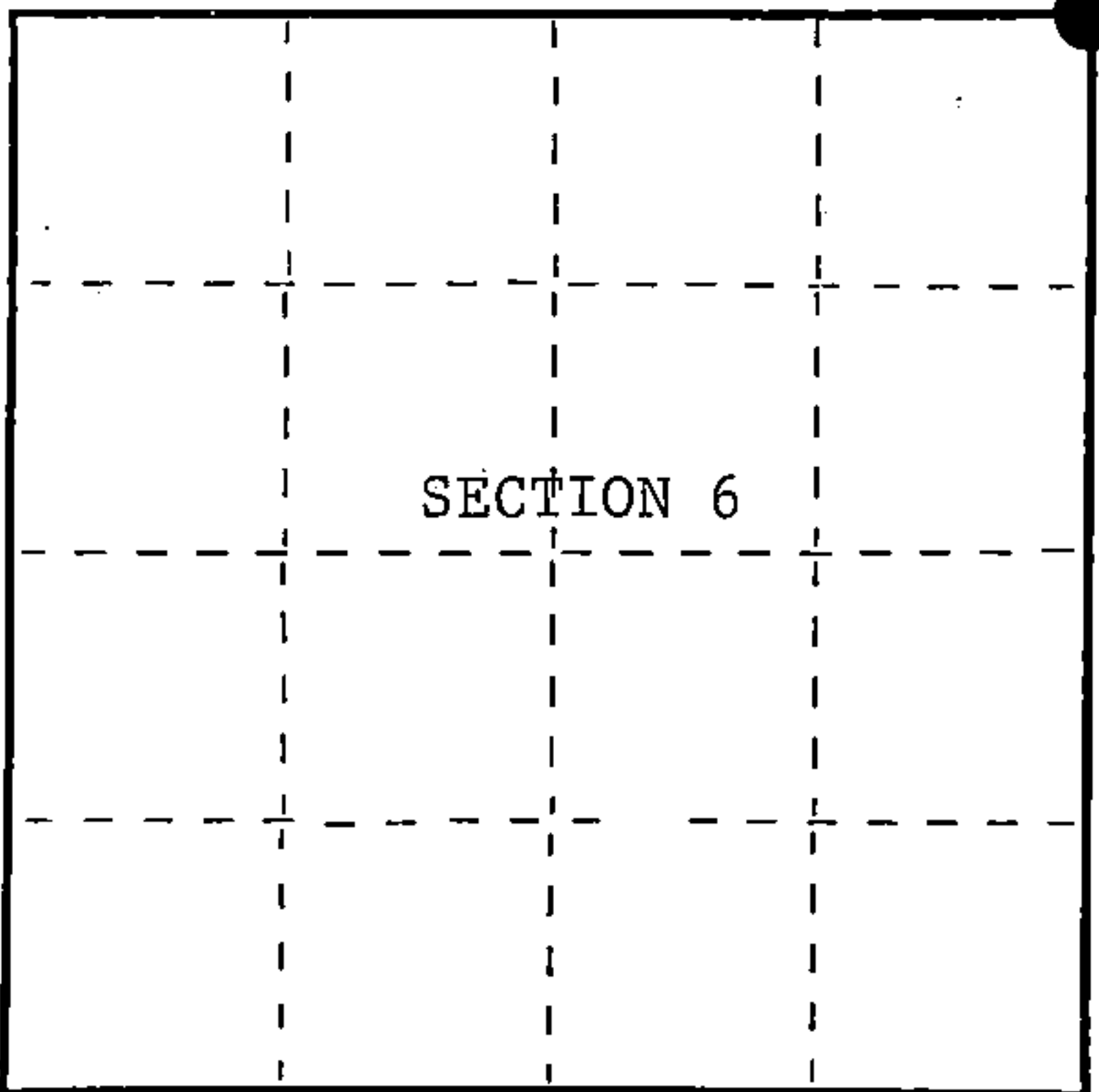
U.S. PUBLIC LAND SURVEY MONUMENT RECORD

Index No. A-5

State of Wisconsin }
County of Forest } ss.

I William B. Cochrane, do hereby certify that on the 11th day of July, 1988, I found evidence of the Northeast Section corner of Section 6 Township 37, North, Range 12 East, Fourth Principal Meridian, as described hereon; and that from this evidence I established a new monument and accessories as described hereon to perpetuate the original location of this corner.

Resident witnesses:



○ = Corner monument restored.

History of original corner establishment:

Original Government Survey in 1858 by Alfred Millard.

Dependent Resurvey in 1937 by Wesson Cook. In place of old post in a mound of stone, set a concrete monument, 24 inches long, 6 inches in diameter, with a brass tablet marked; T38N, R12E, S31, S32, S6, S5, T37N, 1937. From which the following bear;

Hemlock	12"	N84°45'E	59 lks.
Y. Birch	6"	S49°45'E	49 lks.
Hemlock	9"	S28°00'W	49 lks.
Y. Birch	8"	N52°15'W	80 lks.

Description of corner evidence found:

Found monument as described and in place; from which the following bear;

Hemlock(Snag)	14"	N84°45'E	59 lks.(38.94 feet)
Y. Birch	13"	S49°45'E	49 lks.(32.48 feet)
Y. Birch(Snag)	9"	N52°15'W	80 lks.(52.80 feet)

Description of monument and accessories I established to perpetuate the original location of this corner.

Blazed and scribed the following new bearing trees;

Maple	6"	N23°E	28.90 feet
Basswood	9"	S47°W	21.62 feet
Maple	12"	N65°W	23.35 feet
Steel Sign Post		NW	1.00 feet

Dated at Hiles, Wis., this 16th day of February, 1989

Signature William B. Cochrane Title Land Surveyor Registration No. S-1107
(County Surveyor, Registered Land Surveyor, or other duly authorized official)

Office of Register of Deeds, County of Forest, I hereby certify that the within instrument was filed in this office for record on the 7th day of March, 1989 at 9:55 o'clock A. M.

Paul Aschenbrenner

(Register of Deeds)

By Sandra L. Reddo Deputy

FORM NO. 985-A

H.C. Miller Company
P.O. Box 100
Hillsboro, Oregon 97123

Stock No. 26273

DOCUMENT NUMBER

137001

43812310000

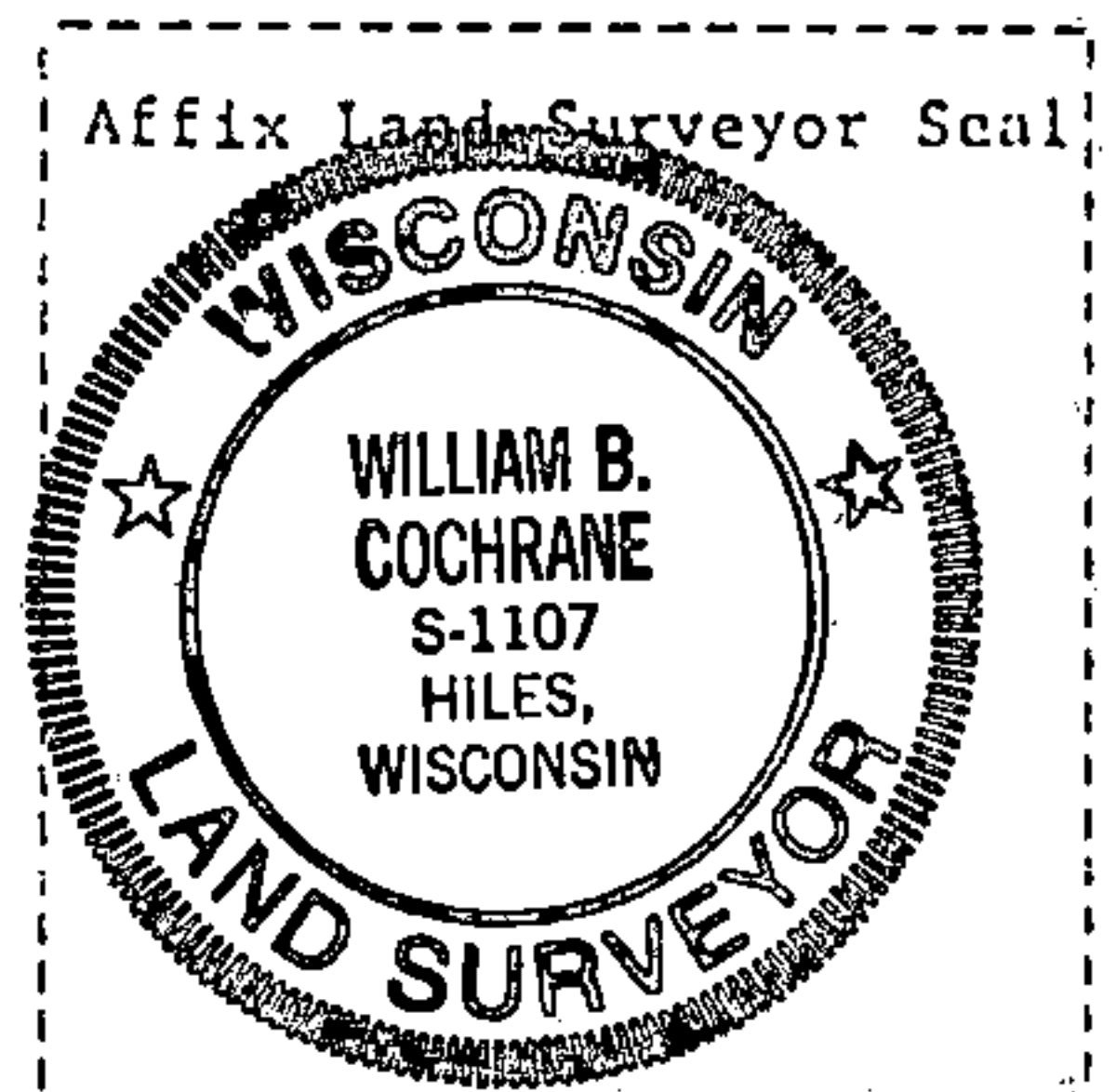
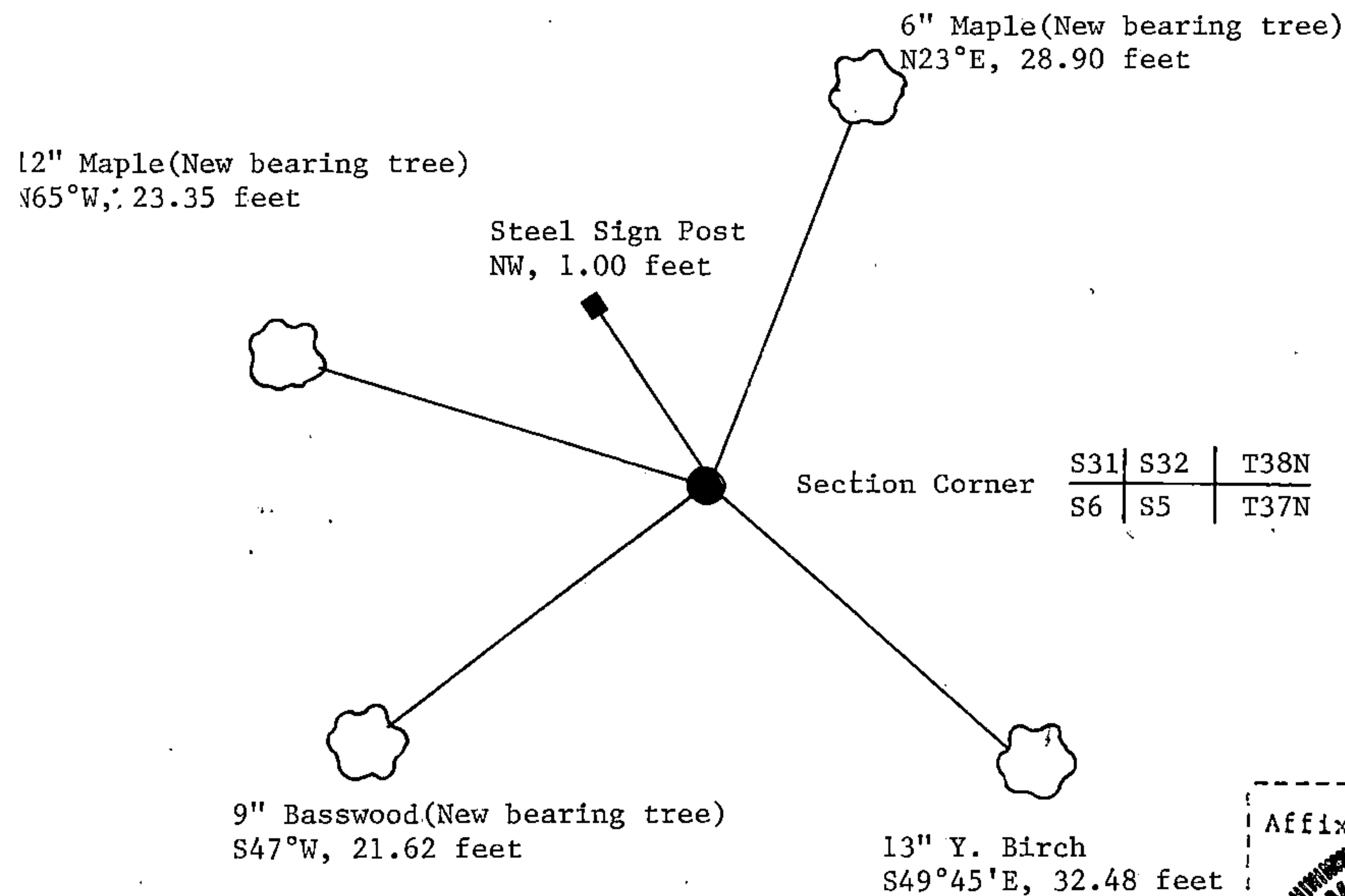
(e) Describe any material discrepancy between the location of the corner as restored or reestablished and the location of that corner as previously restored or reestablished by distance and direction. Show the discrepancy on the plan view drawing under (d), above. Show the distances between the corner as previously restored or reestablished and (1) the corner as restored or reestablished, and (2) to at least 2 of the witness monuments shown on the drawing in (d), above.

See drawing below.

(f) Was the corner restored through acceptance of (1) an obliterated evidence location, or, (2) a found perpetuated location?

Restored through acceptance of a found perpetuated location.

(g&h) Was the corner reestablished through lost corner proportionate methods? If so, show the method, including the directions and distances to other public land survey corners used as evidence or used for proportioning in determining the corner location?



(i) I, William B. Cochrane
(type or print name) certify that the corner location shown on this record was determined by me or under my direction and control and that this U.S. Public Land Survey Monument Record is correct and complete to the best of my knowledge and belief.

William B. Cochrane February 16, 1989
Signature Date

Survey requested by; Danella Syard 2/27/89
District Ranger Date

Date of Survey; 1988