

U.S. PUBLIC LAND SURVEY MONUMENT RECORD

Index No. G-5

State of Wisconsin }  
County of Forest } ss.

I Milo E. Stefan, do hereby certify that on the 24th day of October, 1988, I found evidence of the Quarter corner of Sections 7 and 8 Township 38 North, Range 12 East, Fourth Principal Meridian, as described hereon; and that from this evidence I established a new monument and accessories as described hereon to perpetuate the original location of this corner.

Resident witnesses:

Jeanne M. Stefan

History of original corner establishment:

1859 by Wm. Daugherty.  
1938 - G.L.O. found a Tamarack Post supported by remains of one original bearing tree stump and a local BT, N26 3/4°W, 84 links.(55.44')  
G.L.O. restored corner by placement of a 2" x 36" iron pipe with brass cap and one new BT, a 6" Red Pine, N43°E, 213 links (140.58').

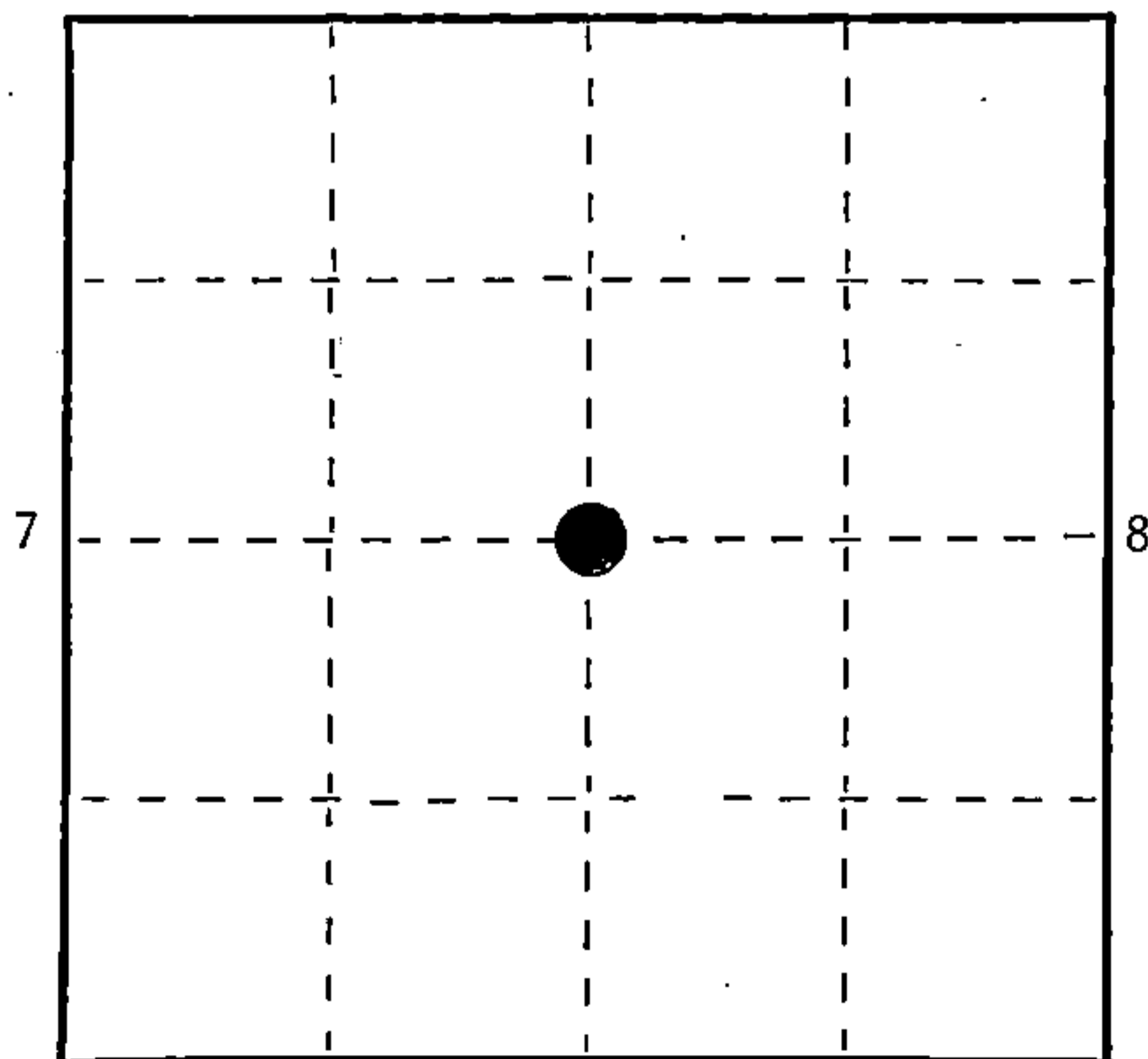
Description of corner evidence found:

We found G.L.O. monument in good condition. Red Pine bearing tree N43°E, 140.60' and the local bearing tree, a 4' snag, N27°W, 55.4' (scribing good).

Description of monument and accessories I established to perpetuate the original location of this corner.

We made three new BTs, placed steel sign post, 6' long, posted BT tags and painted accessories to Forest Service standards:

- 2" Black Spruce, S43°E, 27.08'
- 2" Black Spruce, S79°W, 8.00'
- 2" Black Spruce, N28°W, 29.80'
- 6' Steel Sign Post, Southwest, 1.5'



○ = Corner monument restored.

Dated at Crandon, Wis., this 15th day of November, 1988

Signature *Milo E. Stefan* Title Land Surveyor Registration No. S-1558  
(County Surveyor, Registered Land Surveyor, or other duly authorized official)

Office of Register of Deeds, County of Forest, I hereby certify that the within instrument was filed in this office for record on the 7th day of March, 1989 at 9:55 o'clock A. M.

Paul Aschenbrenner  
(Register of Deeds)

By *Sandra L. Reddo* Deputy

FORM NO. 985-A

H.C. Miller Company

Stock No. 26273

DOCUMENT NUMBER

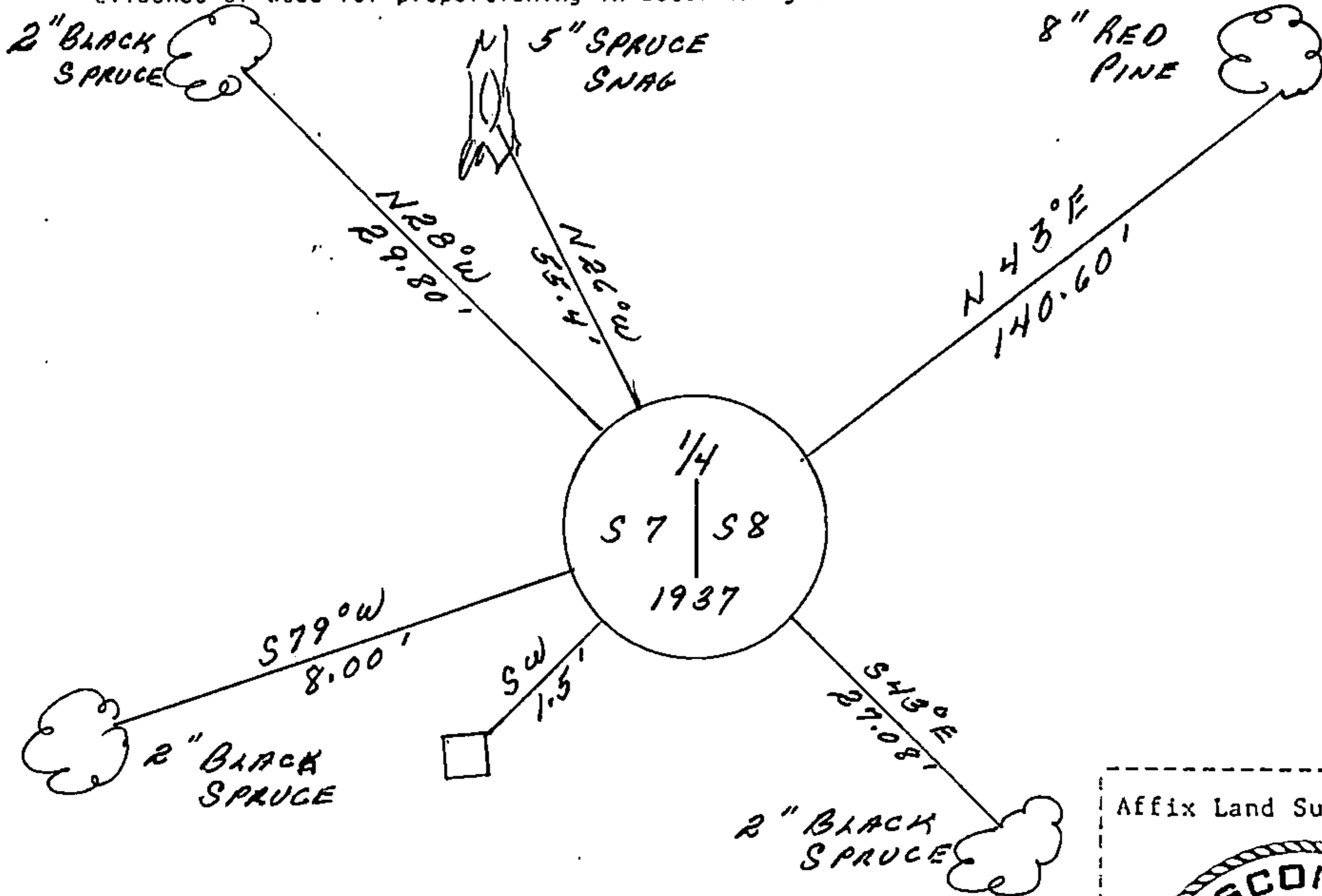
137005

43812072000

(e) Describe any material discrepancy between the location of the corner as restored or reestablished and the location of that corner as previously restored or reestablished by distance and direction. Show the discrepancy on the plan view drawing under (d), above. Show the distances between the corner as previously restored or reestablished and (1) the corner as restored or reestablished, and (2) to at least 2 of the witness monuments shown on the drawing in (d), above.

(f) Was the corner restored through acceptance of (1) an obliterated evidence location, or, (2) a found perpetuated location?  
 2) A found perpetuated location.

(g&h) Was the corner reestablished through lost corner proportionate methods? If so, show the method, including the directions and distances to other public land survey corners used as evidence or used for proportioning in determining the corner location?



(i) I, Milo E. Stefan  
 (type or print name) certify that the corner location shown on this record was determined by me or under my direction and control and that this U.S. Public Land Survey Monument Record is correct and complete to the best of my knowledge and belief.

Milo E. Stefan  
 Signature

11/2/88  
 Date

Certificate ready for filing:

Camela Yordi  
 District Ranger