

U.S. PUBLIC LAND SURVEY MONUMENT RECORD

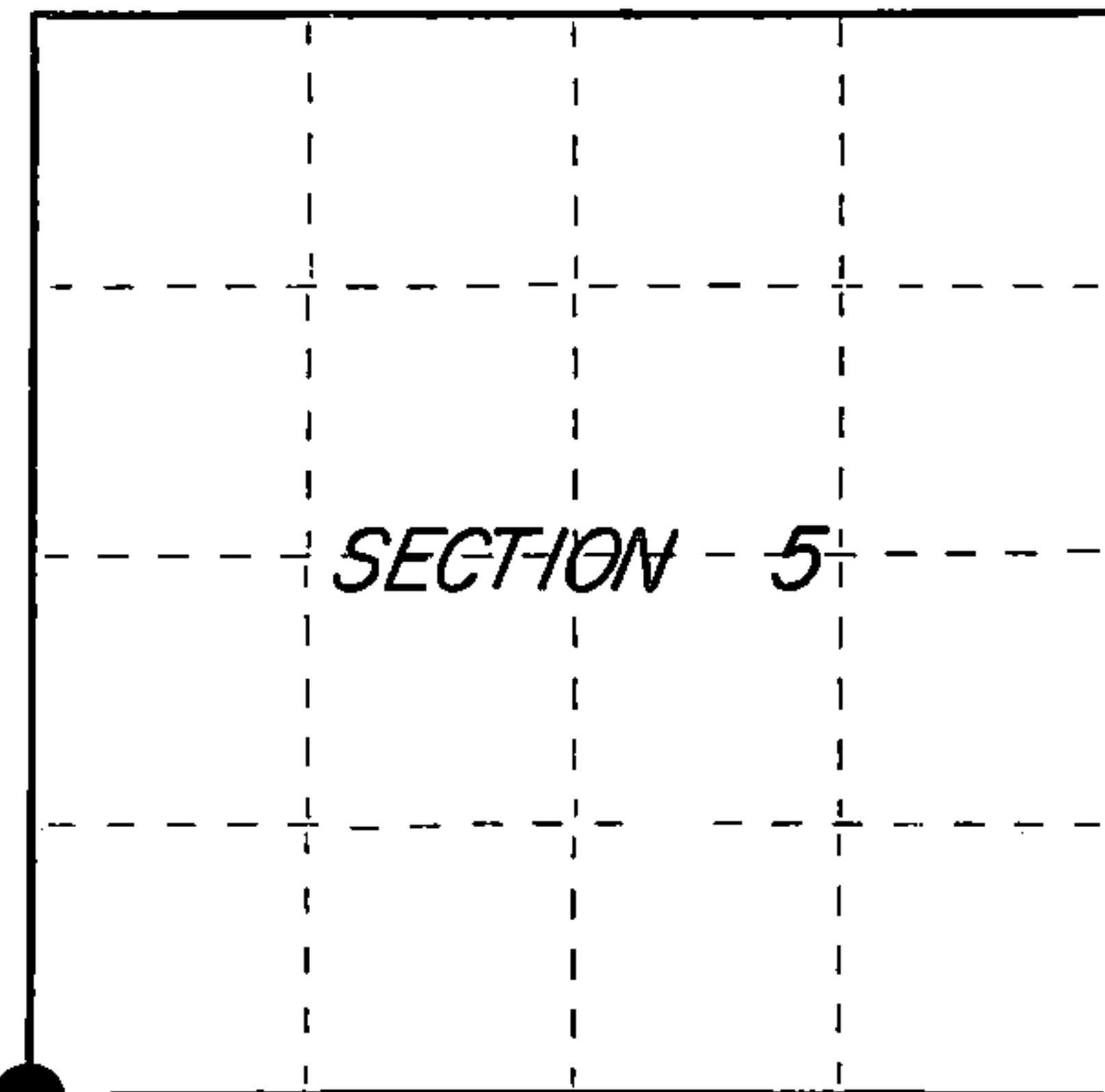
Index No. E-5

State of Wisconsin }
County of Columbia } ss.

I JAMES R. GROTHMAN, do hereby certify that on the 10th day of October, 1986, I found evidence of the Southwest corner of Section 5 Township 38 North, Range 12 East, Fourth Principal Meridian, as described hereon; and that from this evidence I established a new monument and accessories as described hereon to perpetuate the original location of this corner.

Resident witnesses:

None



○ = Corner monument restored.

History of original corner establishment: Original survey by Willian E. Daugherty in 1859. Dependent resurvey by Wesson Cook in 1937. From remains of original B.T. set concrete monument 24 inches long, 6 inches diameter, 20 inches in the ground reinforced with iron post 24 inches long, 1 inch diameter, with brass cap marked:

From which the remains of the original B.T.'s:
Fallen hemlock 20" badly rotted, S30°E 10 lks
Hemlock stump 16" N19°W 23 lks showing part of old blaze and scribe marks

T38N	R12E
S6	S5
S7	S8
1937	

New bearing trees: Hemlock 8" N31-1/4°E 141 lks, marked T38N, R12E, S5 BT
Birch 3" S0°30'E 29 lks, marked BT
Description of corner evidence found: Hemlock 12" N10-1/2°W 126 lks, marked T38N, R12E S6 BT

G.L.O. monument found as described. Found the following accessories:

Birch	16"	S2°E	19.20 feet
Birch	12"	N76°E	2.85 feet
Birch	8"	N85°W	8.20 feet
Birch	8"	N14°E	32.43 feet

Description of monument and accessories I established to perpetuate the original location of this corner.

Corner in good condition. Blazed, scribed, painted, and posted all found bearing trees. Set steel post 1/2 foot east.

Dated at PORTAGE, Wis., this 30 day of OCTOBER, 1986

Signature James R. Grothman Title RLS Registration No. 1321
(County Surveyor, Registered Land Surveyor, or other duly authorized official)

Office of Register of Deeds, County of Forest, I hereby certify that the within instrument was filed in this office for record on the 24th day of FEBRUARY, 1987 at 2:00 o'clock P. M.

Paul Aschenbrenner
(Register of Deeds)

By Deputy

FORM NO. 985-A

H.C. Miller Company

Stock No. 26273

DOCUMENT NUMBER
132151

FOREST COUNTY

REGISTER'S OFFICE
Forest County, Wis.
Received for record this 24th day
of February, A.D., 1987 at
2:00 o'clock P.M. and recorded
in Vol. CORNER RESTORATIONS
page 55
Paul Aschenbrenner
Register of Deeds

43812060000

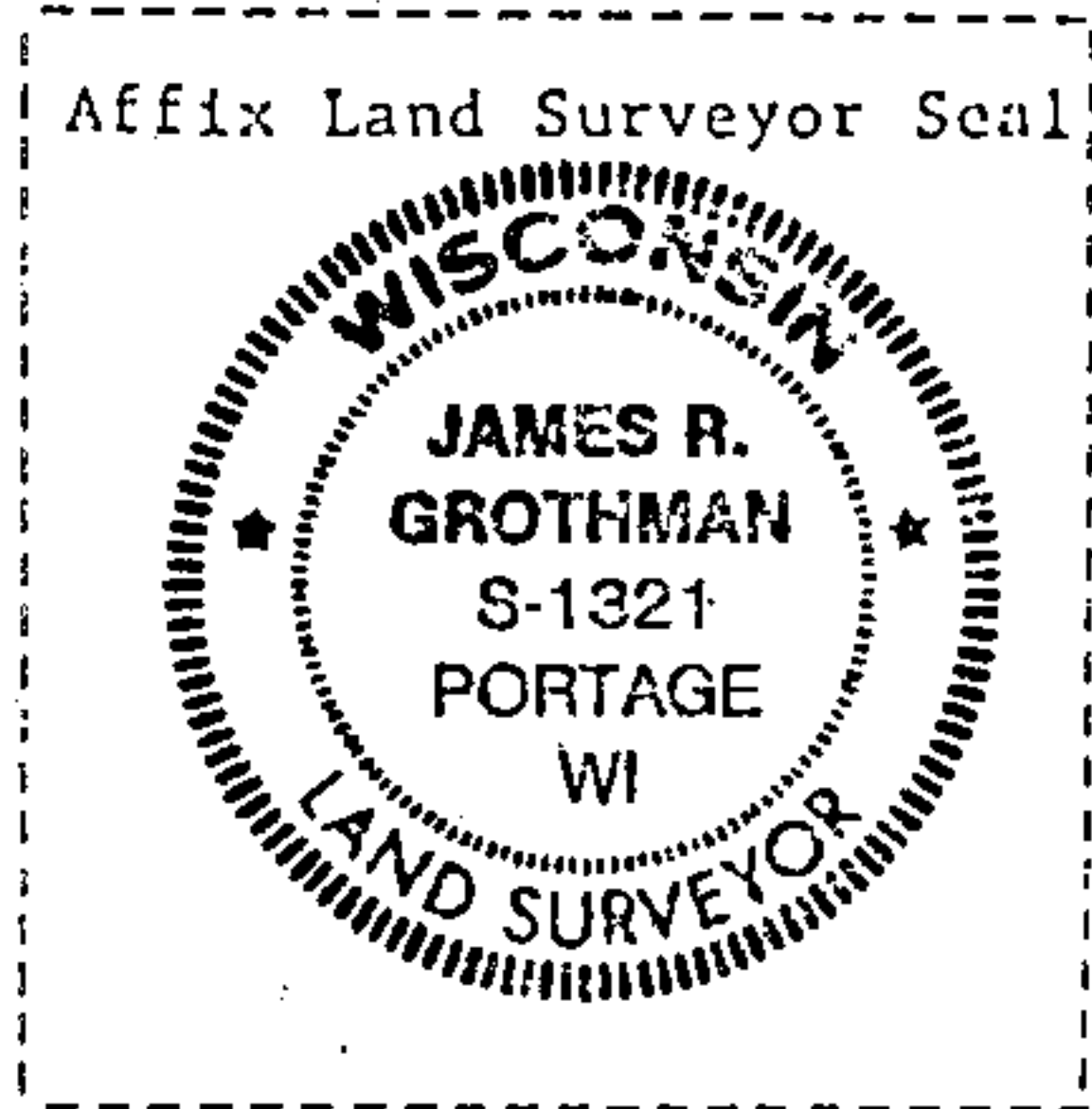
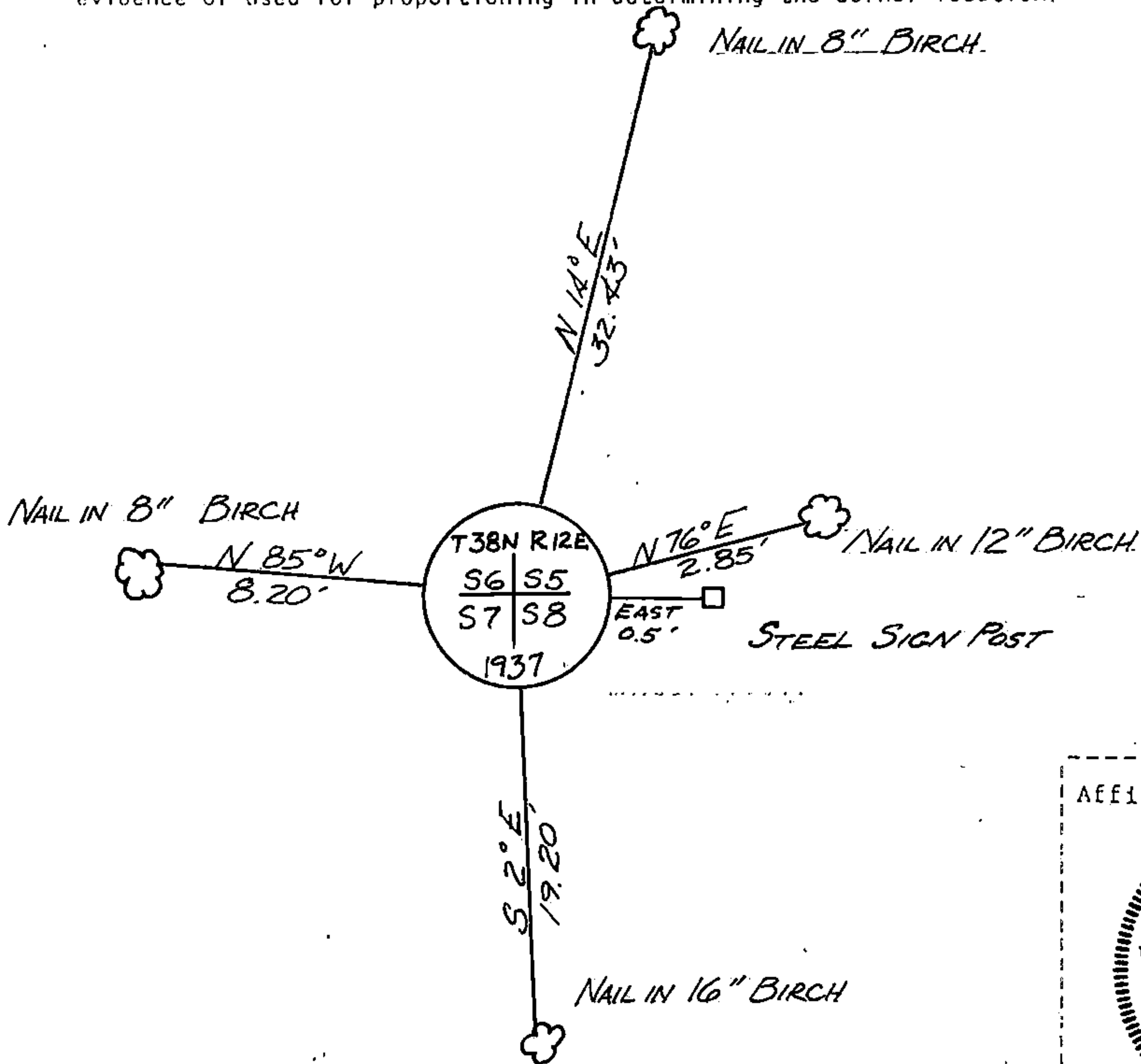
(e) Describe any material discrepancy between the location of the corner as restored or reestablished and the location of that corner as previously restored or reestablished by distance and direction. Show the discrepancy on the plan view drawing under (d), above. Show the distances between the corner as previously restored or reestablished and (1) the corner as restored or reestablished, and (2) to at least 2 of the witness monuments shown on the drawing in (d), above.

SEE G & H

(f) Was the corner restored through acceptance of (1) an obliterated evidence location, or, (2) a found perpetuated location?

Corner was restored through acceptance of a found perpetuated location.

(g&h) Was the corner reestablished through lost corner proportionate methods? If so, show the method, including the directions and distances to other public land survey corners used as evidence or used for proportioning in determining the corner location?



(i) I, JAMES R. GROTHMAN, Registered Land Surveyor No. 1321
(type or print name) certify that the corner location shown
on this record was determined by me or under my direction and
control and that this U.S. Public Land Survey Monument Record is
correct and complete to the best of my knowledge and belief.

James R. Grothman 10/30/86
Signature Date

Certificate ready for filing: P. Frank Haulberg 1/6/87
District Ranger Date