

U.S. PUBLIC LAND SURVEY MONUMENT RECORD

Index No. D-E-6-7

State of Wisconsin }  
County of Columbia } ss.

I, JAMES R. GROTHMAN, do hereby certify that on the 9th day of October, 1986, I found evidence of the Angle point 1 meander corner of Section 5 Township 38 North, Range 12 East, Fourth Principal Meridian, as described hereon; and that from this evidence I established a new monument and accessories as described hereon to perpetuate the original location of this corner.

Resident witnesses:

None

History of original corner establishment: Original survey by William E. Daugherty in 1859. Establishment of recorded original meander line of Woodbury Lake in Section 5 as a fixed and limiting boundary by Wesson Cook, 1938. Set iron post, 3 foot long, 1 inch diameter, 24 inches in the ground for angle point 1, Section 5 with brass cap marked:

T38N	} A.P.1	From which the following bear:		
R12E		Poplar	5"	N6-3/4°E 18 lks marked AP1 S5 B.
S5		Poplar	5"	S21-1/2°W 38 lks marked AP1 S5 B.
1938				

Description of corner evidence found:

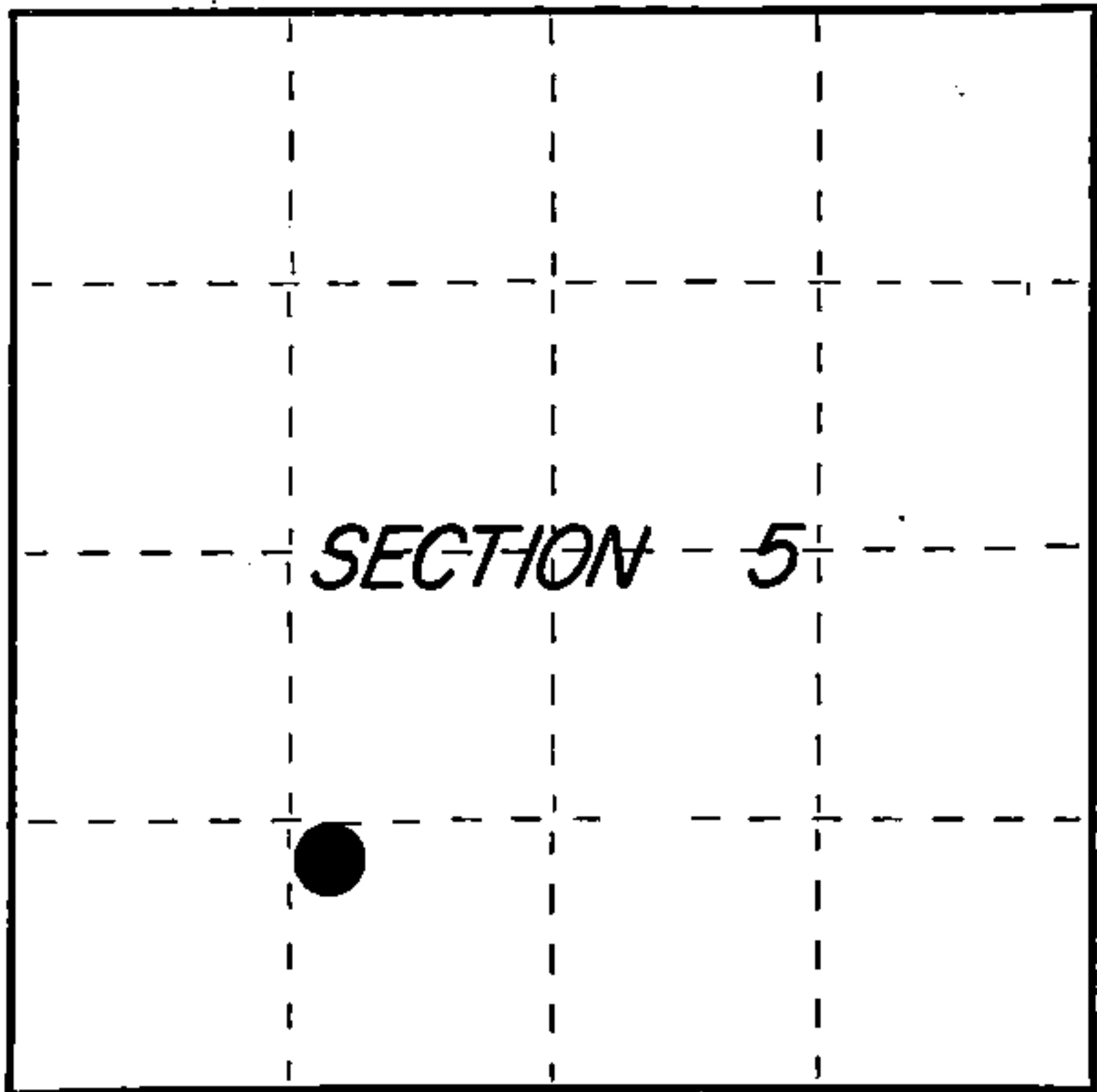
G.L.O. monument found as described. Found the following accessories:

White Birch	14"	N33°E	29.86 feet
Poplar	12"	S44°E	17.80 feet (standing dead)

Description of monument and accessories I established to perpetuate the original location of this corner. Corner found in good condition. Blazed, scribed, painted and posted all found bearing trees and the following new bearing trees:

Maple	5"	N7°W	18.82 feet
Poplar	5"	S56°W	12.99 feet
White Birch	6"	S9°E	5.18 feet

Set steel post 1 foot East of monument



○ = Corner monument restored.

Dated at PORTAGE, Wis., this 30 day of OCTOBER, 1986.  
 Signature James R. Grothman Title PLS Registration No. 1321  
 (County Surveyor, Registered Land Surveyor, or other duly authorized official).  
 Office of Register of Deeds, County of Forest, I hereby certify that the within instrument was filed in this office for record on the 24th day of February, 1987 at 2:00 o'clock P. M.

Paul Aschenbrenner  
 (Register of Deeds)

By.....Deputy

REGISTER'S OFFICE }  
Forest County, Wis.

Received for record this 24 day of February A.D. 1987 at 2:00 o'clock P.M. and recorded in Vol. CORNER RESTORATIONS PAGE D-E-67 Paul Aschenbrenner Register of Deeds

FORM NO. 985-A  
H.C. Miller Company

Stock No. 26273

DOCUMENT NUMBER  
132150

FOREST COUNTY

43812050929

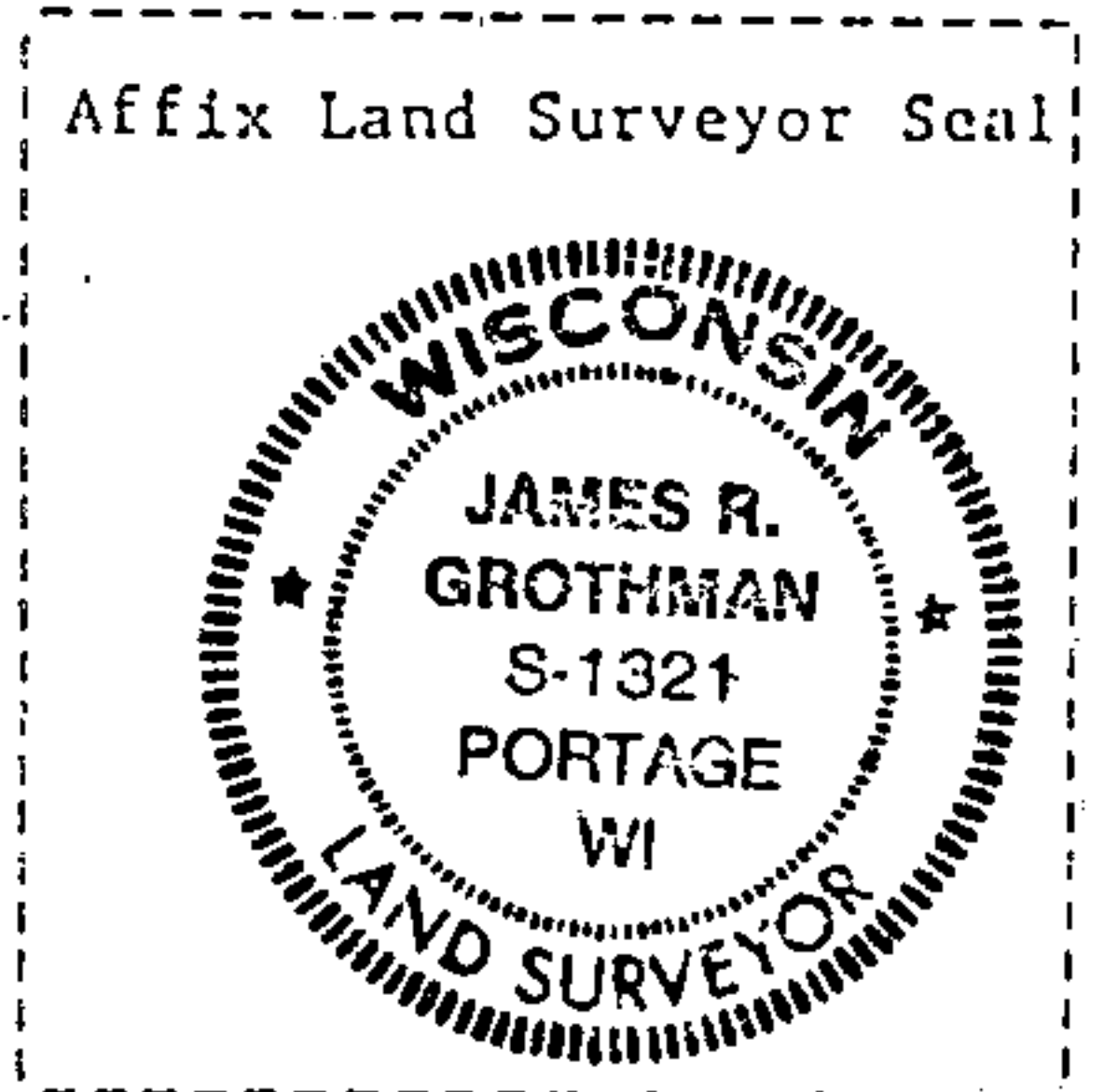
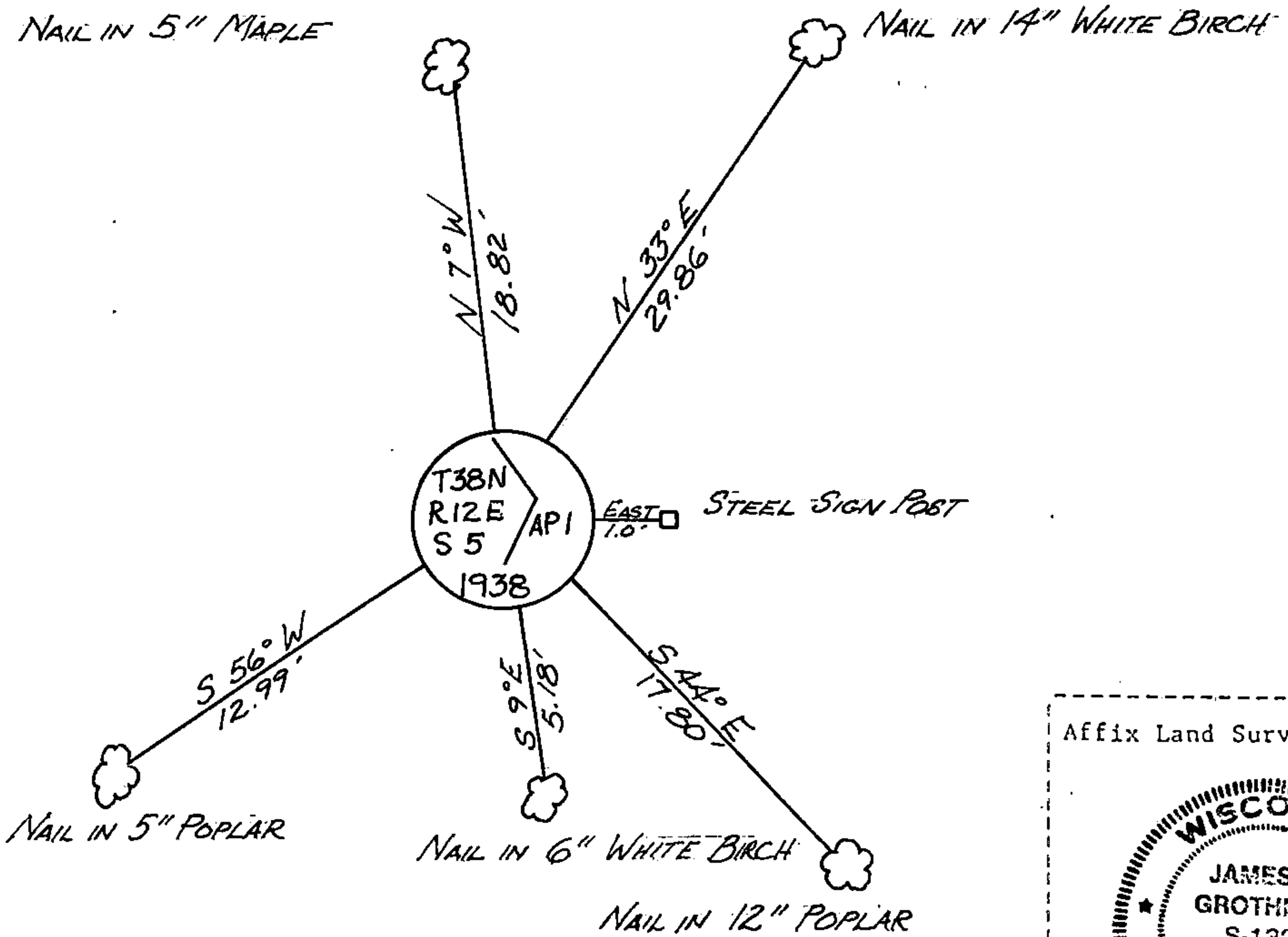
(e) Describe any material discrepancy between the location of the corner as restored or reestablished and the location of that corner as previously restored or reestablished by distance and direction. Show the discrepancy on the plan view drawing under (d), above. Show the distances between the corner as previously restored or reestablished and (1) the corner as restored or reestablished, and (2) to at least 2 of the witness monuments shown on the drawing in (d), above.

See G and H

(f) Was the corner restored through acceptance of (1) an obliterated evidence location, or, (2) a found perpetuated location?

Corner was restored through acceptance of a found perpetuated location.

(g&h) Was the corner reestablished through lost corner proportionate methods? If so, show the method, including the directions and distances to other public land survey corners used as evidence or used for proportioning in determining the corner location?



(i) I, JAMES R. GROTHMAN, Registered Land Surveyor, NO. 1321  
 (type or print name) certify that the corner location shown on this record was determined by me or under my direction and control and that this U.S. Public Land Survey Monument Record is correct and complete to the best of my knowledge and belief.

James R. Grothman Signature Date 10/30/86

Certificate ready for filing: N. Frank Haubry District Ranger Date 1/6/87