

U.S. PUBLIC LAND SURVEY MONUMENT RECORD

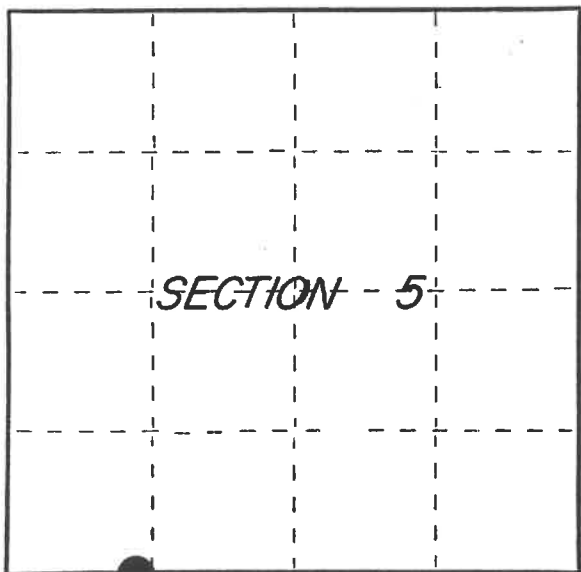
Index No. E-5-6

State of Wisconsin }
County of Columbia } ss.

I, JAMES R. GROTHMAN, do hereby
certify that on the 20th day
of October, 1986, I found
evidence of the Meander
corner of Sections 5 and 8
Township 38, North, Range
12 East, Fourth Principal Meridian,
as described hereon; and that from this evidence
I established a new monument and accessories
as described hereon to perpetuate the original
location of this corner.

Resident witnesses:

NONE



○ = Corner monument restored.

History of original corner establishment: Original survey in 1859 by William E. Daugherty.
Dependent resurvey in 1937 by Wesson Cook. Set a concrete monument 24 inches long,
6 inch diameter, 20 inches in the ground, for meander corner of fractional sections
5 and 8, reinforced with an iron post 24 inches long, 1 inch diameter, with brass
cap marked:

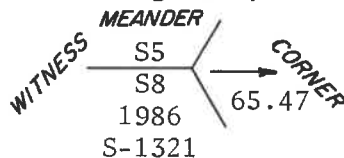
T38N	From which the following bear:			
S5				
S8 MC	Hemlock stump	20"	N16-1/2°W	7 lks
R12E	Birch	8"	S22°W	28 lks
1937				

Description of corner evidence found:

No original corner evidence was recovered.

Description of monument and accessories I established to perpetuate the original location of this corner.

Set a Berntsen Aluminum Monument 36 inches long, 1 inch diameter, 27 inches in
the ground, with aluminum cap marked:



Blazed, scribed, painted and posted the following new bearing trees

Maple	20"	N46°W	44.80 feet
Balsam	12"	S32°E	42.68 feet
Balsam	8"	N87°E	45.68 feet
Steel sign post		North	1.00 foot ±

Dated at PORTAGE Wis., this 5 day of DECEMBER, 1986.

Signature James R. Grothman Title LAND SURVEYOR Registration No. 1321
(County Surveyor, Registered Land Surveyor, or other duly authorized official)

Office of Register of Deeds, County of Forest, I hereby certify that the within
instrument was filed in this office for record on the 24th day of February, 1987
at 2:00 o'clock P M.

Paul Achenbrenner
(Register of Deeds)

By _____ Deputy

FORM NO. 985-A

H.C. Miller Company
REGISTERED SURVEYOR

Stock No. 26273

DOCUMENT NUMBER

132143

FOREST COUNTY

REGISTER'S OFFICE
Forest County, Wis.
Received for record this 24th day
of February A.D., 1987 at
2:00 o'clock P M. and recorded
in Vol. CORNER RESTORATIONS
page E-5-6
Paul Achenbrenner
Register of Deeds

43612050031

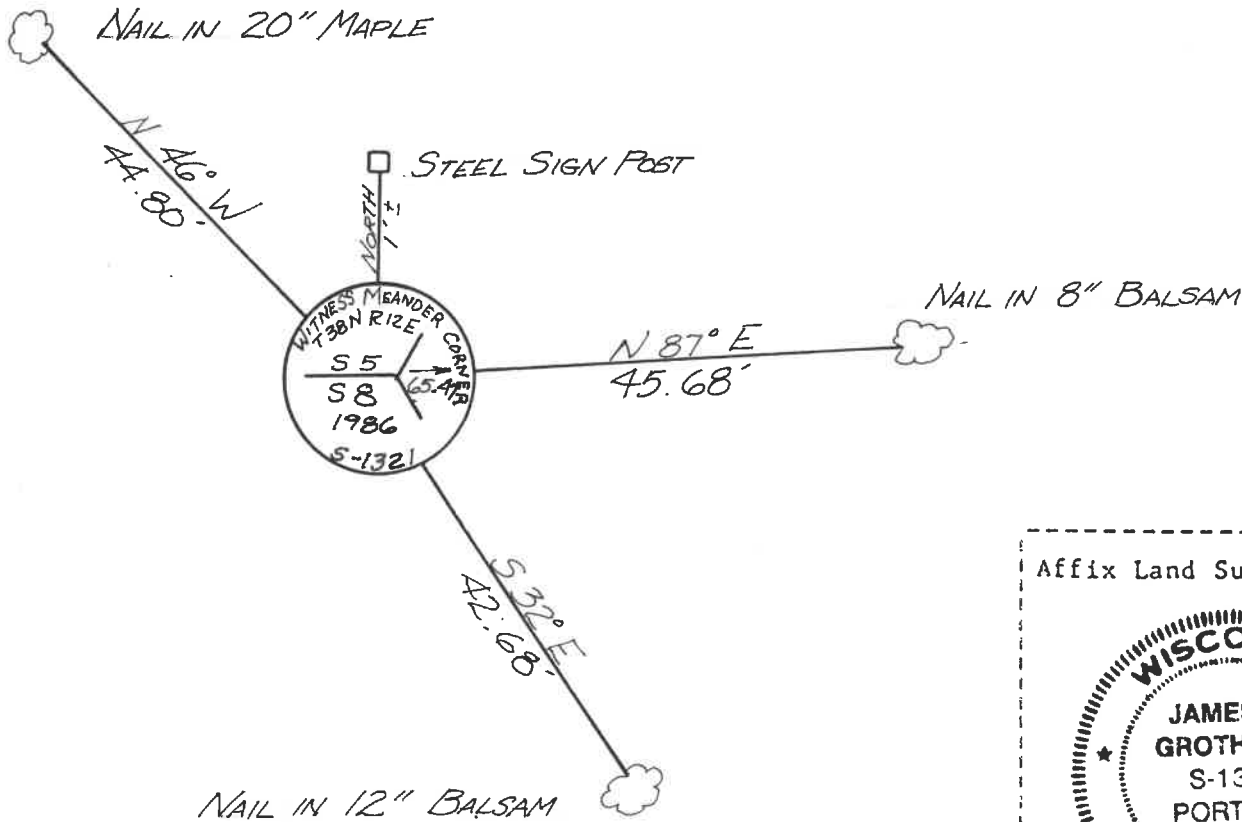
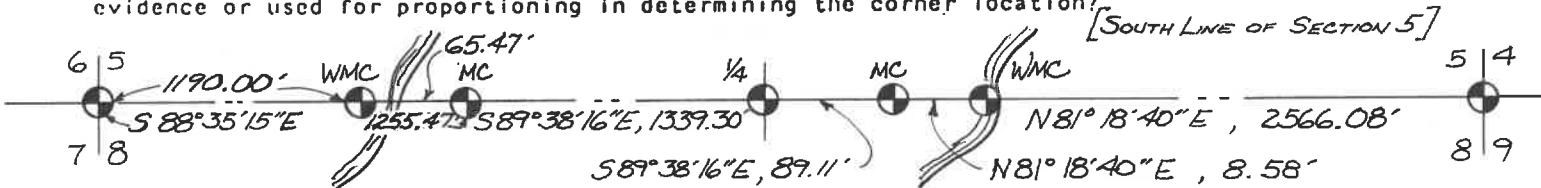
(e) Describe any material discrepancy between the location of the corner as restored or reestablished and the location of that corner as previously restored or reestablished by distance and direction. Show the discrepancy on the plan view drawing under (d), above. Show the distances between the corner as previously restored or reestablished and (1) the corner as restored or reestablished, and (2) to at least 2 of the witness monuments shown on the drawing in (d), above.

See drawing below

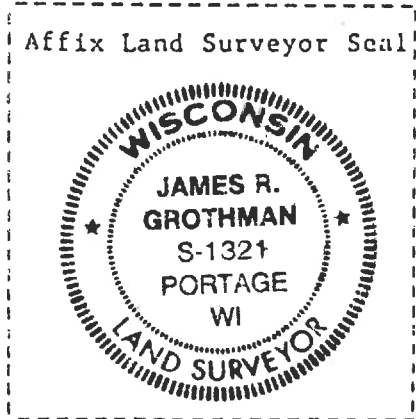
(f) Was the corner restored through acceptance of (1) an obliterated evidence location, or, (2) a found perpetuated location?

Corner was restored through the proportionate method shown in G & H

(g&h) Was the corner reestablished through lost corner proportionate methods? If so, show the method, including the directions and distances to other public land survey corners used as evidence or used for proportioning in determining the corner location?



(i) 1. JAMES R. GROTHMAN, Registered Land Surveyor No. 1321 (type or print name) certify that the corner location shown on this record was determined by me or under my direction and control and that this U.S. Public Land Survey Monument Record is correct and complete to the best of my knowledge and belief.



Signature James R. Grothman Date 12/5/86

Certificate ready for filing: N. Frank Hawley 1/6/87
District Ranger Date