

U.S. PUBLIC LAND SURVEY MONUMENT RECORD

Note: This form is intended and designed to fulfill all requirements of Wisconsin Administrative Code, Chapter A-E 7.08 U.S. Public Land Survey Monument Record (3)(a-1).

(a) CORNER LOCATION
Cor. of Secs. 13, 18, 19 & 24
Township 38 North
Range 11 & 12 East of the 4th P.M.
Town of Three Lakes
County of Oneida

WISCRS - Oneida County
N:
E:
Datum:
GNSS Method:
GNSS Control:

	SEC. 13		
	T38N	R11E	

(b) HISTORY OF ORIGINAL CORNER ESTABLISHMENT

Original Surveyor: Alfred Millard

Original Accessories:

Date of Survey Commenced: June, 1858
Completed: June, 1858

hemlock 18" N65°W, 30 lks.
w. birch 16" N45°E, 15 lks.
y. birch 12" S30°E, 24 lks.
cedar 10" S17°W, 21 lks.

(b)(f)(g)(h) Description of monument found at this corner and if it was accepted, state all evidence (material, testimonial, occupational, plats, records, other monuments) used as a basis for accepting. If not accepted or if nothing was found, state evidence used as basis for establishing location. If re-established through lost corner proportionate methods, indicate all monuments, distances and directions used to establish. Indicate type of monument and sign post found or set.

1937: Dependent Resurvey by the General Land Office. Set 2" diam., 36" long brass-capped iron pipe from remains of the original bearing trees. New bearing trees: hemlock 9" N30-3/4°E, 82 lks., hemlock 10" S75°E, 87 lks., hemlock 6" S40-1/2°W, 43 lks., hemlock 8" N63-1/4°W, 53 lks.

August 18, 2016: I found and accepted the record monument, a 2" diam. iron pipe with a 2-1/2" diam. GLO brass cap projecting 10" above the ground surface. The 6" GLO hemlock is now a stump. I found or established accessories as shown below and found a white vinyl sign post bearing Southeast, 1 ft. dist.

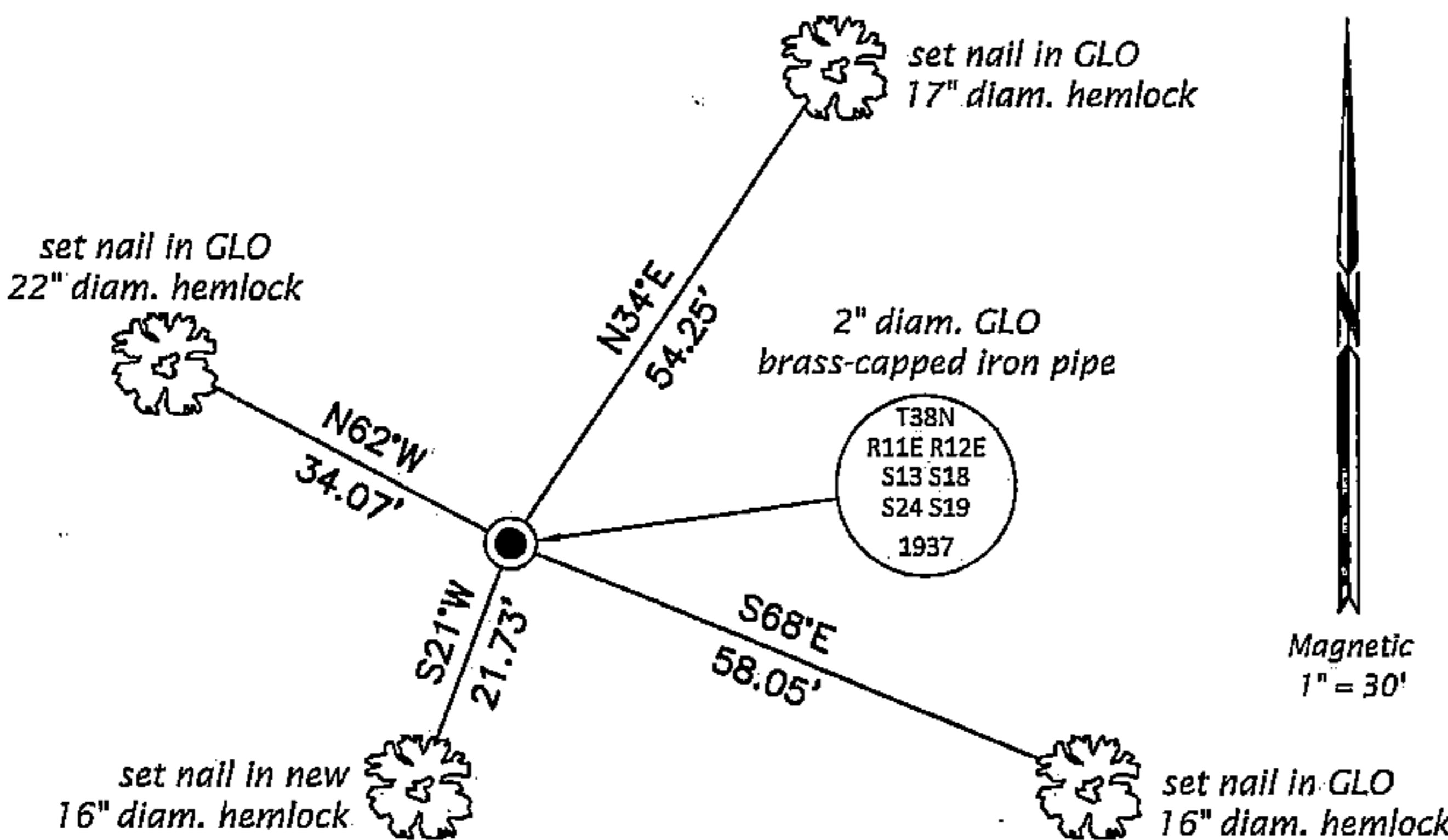
The coordinate value shown has been verified by at least one of the following methods: 1) comparison to a previously GPS determined published value; 2) the value is the average of two or more GPS observations at a markedly different time; 3) one or more distances were measured back to the GPS observed corner from temporary GPS observed offset locations.

FOREST COUNTY, WI
CORTNEY BRITTEN CLEEREMAN
REGISTER OF DEEDS
RECEIVED FOR RECORD

MAY 31 2018

Time: 10:00 A.M.
Vol.: Corner Restoration
Page Number: N-1

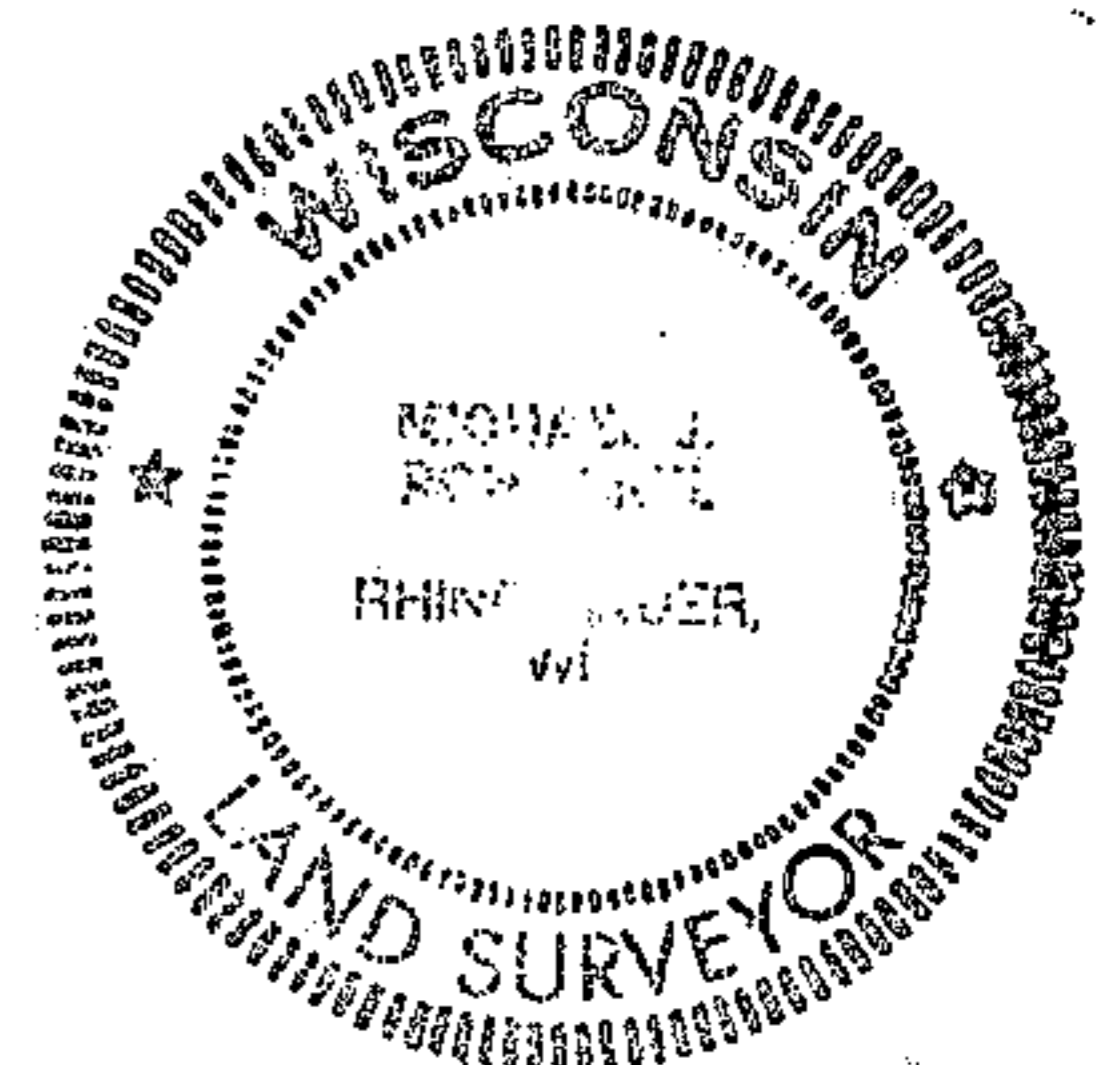
(c)(d)(e) Plan view of corner with ties to at least 4 witness monuments. If in disagreement with previously established corner, show the distances between the two corners and also indicate the ties to the disputed.



REGISTER OF DEEDS OFFICE
ONEIDA COUNTY
FILED

DEC 28 2016

AT O'CLOCK M
KYLE J. FRANSON
REGISTER OF DEEDS



(i) I, Michael J. Romportl, Professional Land Surveyor No. S-1624, hereby certify that the corner location on this record was determined by me or under my direction and control and that this U.S. Public Land Survey Monument Record is correct and complete to the best of my knowledge and belief.

Michael J Romportl 12/23/2016
Signature Date

3811130000 (INDEX NO. N-25)

4381130000

N-1