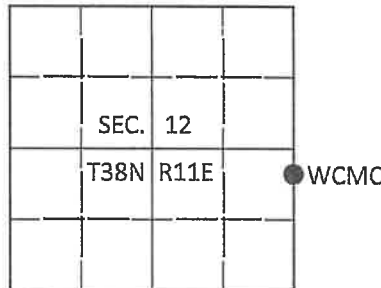


U.S. PUBLIC LAND SURVEY MONUMENT RECORD

Note: This form is intended and designed to fulfill all requirements of Wisconsin Administrative Code, Chapter A-E 7.08 U.S. Public Land Survey Monument Record (3)(a-1).

(a) CORNER LOCATION
 Witness Meander Cor. of Secs. 7 & 12
 Township 38 North
 Range 11 & 12 East of the 4th P.M.
 Town of Three Lakes
 County of Oneida

WISCRS - Oneida County
 N: 219,362.57 USft
 E: 356,772.21 USft
 Datum: NAD 83(2011)
 GNSS Method: RTN Offset
 GNSS Control: WISCORS VRS



(b) HISTORY OF ORIGINAL CORNER ESTABLISHMENT

Original Surveyor: _____ Original Accessories: _____

Date of Survey _____ Commenced: _____
 Completed: _____

(b)(f)(g)(h) Description of monument found at this corner and if it was accepted, state all evidence (material, testimonial, occupational, plats, records, other monuments) used as a basis for accepting. If not accepted or if nothing was found, state evidence used as basis for establishing location. If re-established through lost corner proportionate methods, indicate all monuments, distances and directions used to establish. Indicate type of monument and sign post found or set.

This is a perpetuation of a previous USPLS Monument Record by Matthew E. Hoglund, RLS dated April 8, 2005 and filed in the office of the Oneida County Register of Deeds. A complete history of the corner can be found on the previous monument record. I accept the previous location as a true and faithful perpetuation or reestablishment of the original corner location and further perpetuate it as follows.

October 6, 2016: I found and accepted the record monument, a 3/4" diam. iron rod. In its place, I set a 2-1/2" diam. aluminum pipe with a 3-1/4" diam. Oneida Co. aluminum cap projecting 4" above the ground surface. Due to a tree root at the corner point, I was forced to cut the standard 30" long monument. I piled rocks around the monument to provide additional support. I found accessories as shown below and set a white vinyl sign post bearing Northwest, 1 ft. dist.

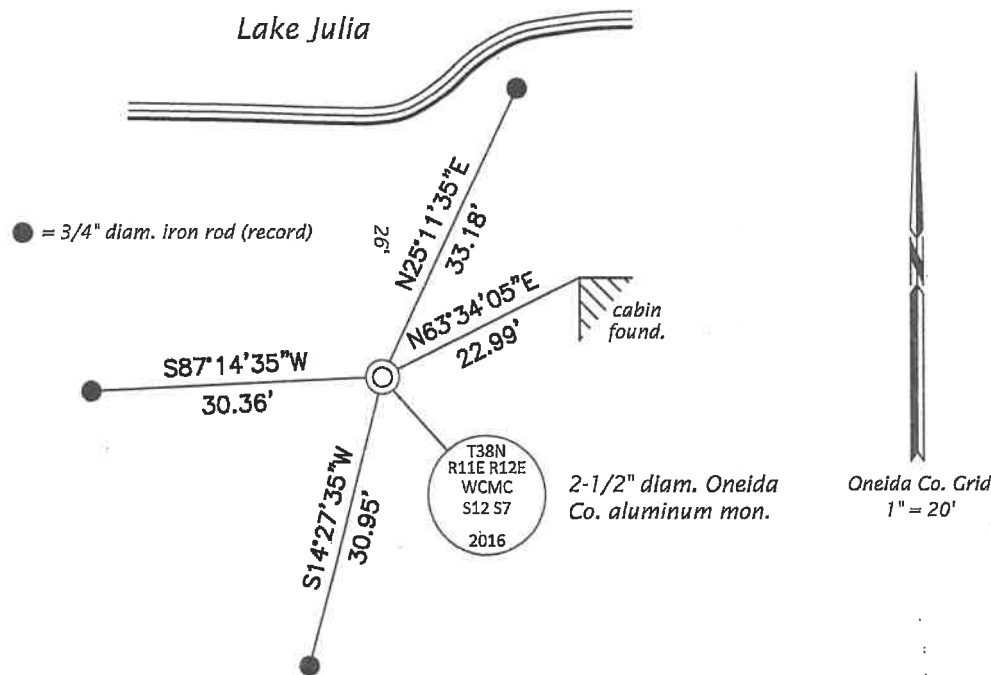
The coordinate value shown has been verified by at least one of the following methods: 1) comparison to a previously determined published value; 2) the value is the average of two or more GPS observations at a markedly different time or more distances were measured back to the GPS observed corner from temporary GPS observed offset locations.

FOREST COUNTY, WI
 CORTNEY BRITTEN CLEEREMAN
 REGISTER OF DEEDS
 RECEIVED FOR RECORD

MAY 31 2018

Time: 10:00 A.M.
 Vol.: Corner Restoration
 Page Number: G-1

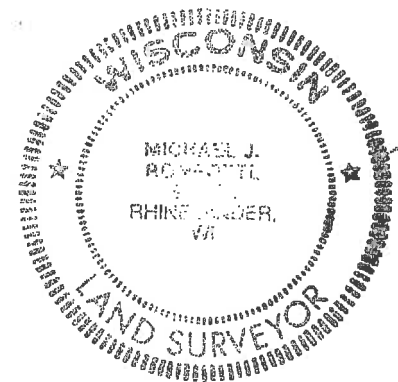
(c)(d)(e) Plan view of corner with ties to at least 4 witness monuments. If in disagreement with previously established corner, show the distances between the two corners and also indicate the ties to the disputed.



REGISTER OF DEEDS OFFICE
 ONEIDA COUNTY
 FILED

DEC 28 2016

AT _____ O'CLOCK _____ M
 KYLE J. FRANSON
 REGISTER OF DEEDS



G-1

(i) I, Michael J. Romportl, Professional Land Surveyor No. S-1624, hereby certify that the corner location on this record was determined by me or under my direction and control and that this U.S. Public Land Survey Monument Record is correct and complete to the best of my knowledge and belief.

Michael J Romportl 12/23/2016
 Signature Date

3811121400 (INDEX NO. G,H-25)

4381121600