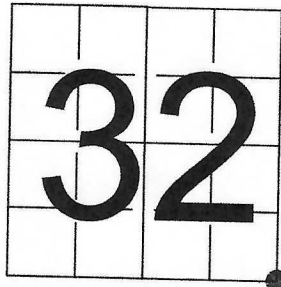


U S PUBLIC LAND SURVEY MONUMENT RECORD

NOTE: This form is intended and designed to fulfill all requirements of Wisconsin Administrative Code, Chapter A-E 7.08 U.S. Public Land Survey Monument Record (3) (a-i)

A-E 7.08(3)(a) Identity of corner
SOUTH EAST CORNER OF SECTION 32
TOWNSHIP 37 NORTH
RANGE 16 EAST OF THE 4TH PM
TOWN OF ARMSTRONG CREEK
COUNTY OF FOREST

WISCRS - FOREST COUNTY
N: 594,539.981 USft
E: 937,030.996 USft
Datum: NAD83 (2011)
GNSS Method RTN - Direct
GNSS Control WISCORS VRS



The coordinate value shown is the average of two or more GPS observations at a markedly different time.

A-E 7.08(3)(b) Description of any record evidence, monument evidence, occupational evidence, testimonial evidence, or any other material evidence.

Original Surveyor: Artemus Curtis

Date of Original Survey Commenced: September 1857
 Completed: October 1857

Original Accessories:

Hemlock	15	N 38° W	9 Links
Yellow Birch	22	N 46° E	32 Links
Hemlock	18	S 42° E	26 Links
Yellow Birch	10	S 32° W	28 Links

See Previous Monument Record:
Index No. A-9
Document No. 147752

October 1991 - Surveyor 1651 - Alan D. Harrison
Found a 2" flue pipe and a 1/2" iron rod marking corner position.

October 1992 - Surveyor 1651 - Alan D. Harrison
Set 2 1/2" x 36" Aluminum Monument stamped to identify corner location.
Established reference monuments:

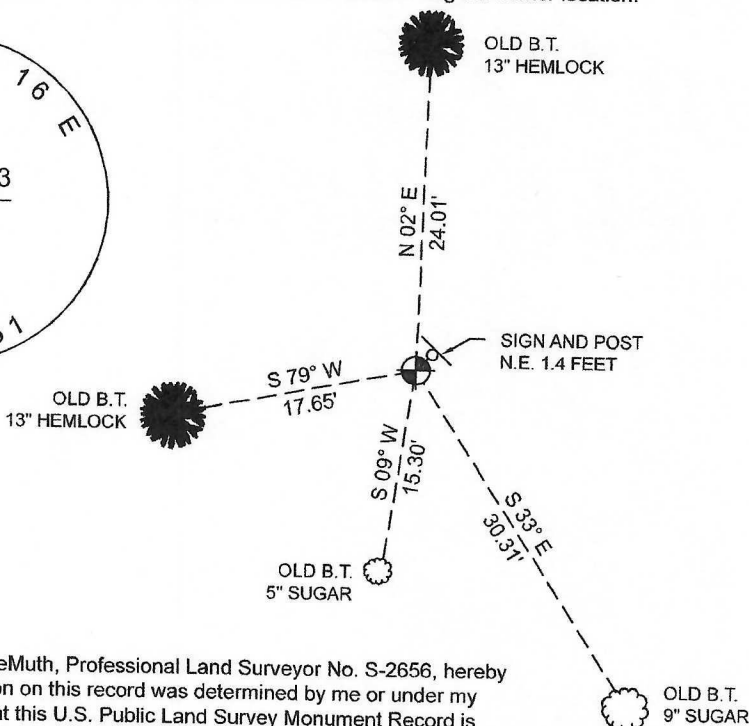
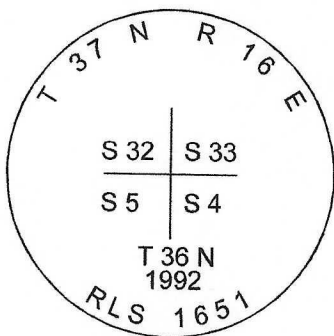
Hemlock, 13",	N.2°E.,	24.01 feet	Hemlock, 13",	S.79°W.,	17.65 feet
Sugar, 9",	S.33°E.,	30.31 feet	Steel Sign Post, N.E.,	1.40 feet	
Sugar, 5",	S.9°W.,	15.30 feet			

A-E 7.08(3)(f) Whether the corner was restored through acceptance of an obliterated location or a found perpetuated location.

October 29, 2021 - I found a 2 1/2" diameter aluminum pipe with a 3" diameter aluminum cap stamped to identify the corner.
I also found Harrison's reference monuments in good condition shown below.

I accept this monument as a FOUND PERPETUATED LOCATION OF THE CORNER.
No new witnesses were established.


A-E 7.08(3)(c)(d)(e)(h) Plan view of corner with references to at least 4 witness monuments. If in disagreement with previously established corner, show the distances between the two corners and also indicate the ties to the disputed. The directions and distances to other public land survey corners used as evidence or used for determining the corner location.



BEARINGS
MEASURED
WITH A
HAND
COMPASS



A-E 7.08(3)(i) I, Jeffrey L. DeMuth, Professional Land Surveyor No. S-2656, hereby certify that the corner location on this record was determined by me or under my direction and control and that this U.S. Public Land Survey Monument Record is correct and complete to the best of my knowledge, and belief


SIGNATURE

February 2, 2022
DATE



43716320000

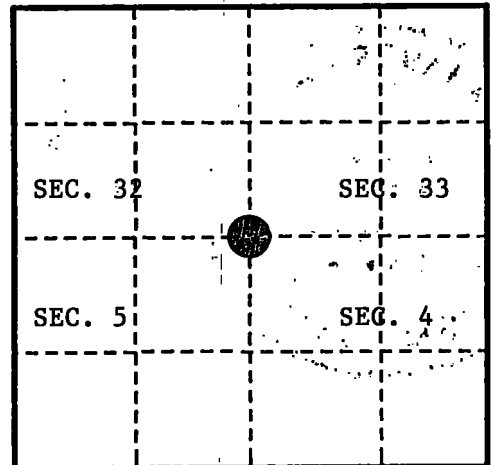
U. S. PUBLIC LAND SURVEY MONUMENT RECORD

INSTRUCTIONS:

This record shall show the location of the corner and shall include all of the following nine elements (a through i).

- (a) Identify the corner by reference to the U.S. public land survey system.
 O = Corner monument restored.

Corner Common to Sections 4, 5, 32, and 33,
 T.36-37N., R.16E., Forest County, Wisconsin.



- (b) Describe any record evidence, monument evidence, occupational evidence, testimonial evidence or any other material evidence you considered, and whether the monument was found or placed.

In 1857, Artemas Curtis set post for corner and made the following references: Hemlock, 15", N.38°W., 9 links (5.94'); Yellow Birch, 22", N.46°E., 32 links (21.12'); Hemlock, 18", S.42°E., 26 links (17.16'); Yellow Birch, 10", S.32°W., 28 links (18.48').

In 1829, Goodman Company set 3" Hemlock post to replace old post. No B.T.'s found.
 Set flue pipe 2" x 30".

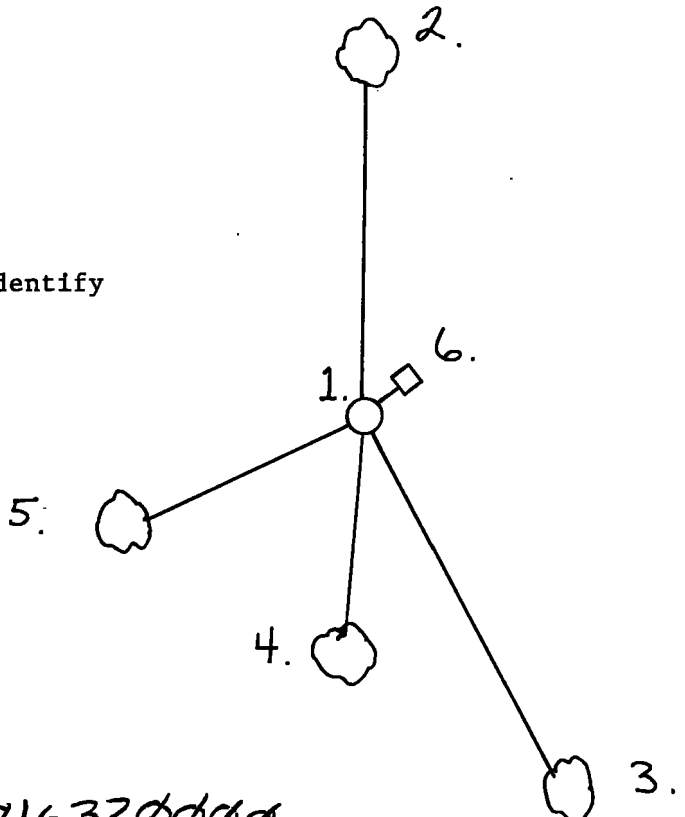
In October 1991, Alan Harrison found 2" flue pipe and 1/2" iron rod marking corner position. No original corner evidence found.

In October 1992, Alan Harrison set monument in place of flue pipe.

- (c) In the plan view drawing below, provide reference ties to at least 4 witness monuments, or, if the location is within a municipality, to at least 2 witness monuments. (witness monuments shall be made of concrete, natural stone, iron or other equally durable material.)

- (d) Show a plan view drawing depicting the relevant monuments and reference ties which is sufficient in detail to enable accurate relocation of the corner monument if the corner monument is disturbed. Indicate north.

- 2 1/2" x 36" Aluminum monument stamped to identify corner location.
- Hemlock, 13", N.2°E., 24.01 feet
- Sugar, 9", S.33°E., 30.31 feet
- Sugar, 5", S.9°W., 15.30 feet
- Hemlock, 13", S.79°W., 17.65 feet
- Steel Sign Post, N.E., 1.40 feet



REGISTER'S OFFICE
 Forest County, Wis.
 Received for record this 30th day
 of JUNE, A.D., 1993 at
2:10 o'clock P.M. and recorded
 in Vol. CORNER RESTORATIONS
 Page A-9
John Aschmann
 Register of Deeds

43716320000

(a) Describe any material discrepancy between the location of the corner as restored or reestablished and the location of that corner as previously restored or reestablished by distance and direction. Show the discrepancy on the plan view drawing under (d), above. Show the distances between the corner as previously restored or reestablished and (1) the corner as restored or reestablished, and (2) to at least 2 of the witness monuments shown on the drawing in (d), above.

None.

(f) Was the corner restored through acceptance of (1) an obliterated evidence location, or, (2) a found perpetuated location?

A found perpetuated location.

(g & h) Was the corner reestablished through lost corner proportionate methods? If so, show the method, including the directions and distances to other public land survey corners used as evidence or used for proportioning in determining the corner location?

No.

(1) I, Alan D. Harrison
(type or print name) certify that the corner location shown on this record was determined by me or under my direction and control and that this U.S. Public Land Survey Monument Record is correct and complete to the best of my knowledge and belief.

Signature

Date

CERTIFICATE READY FOR FILING:

District Ranger

