

CORTNEY BRITTEN CLEEREMAN
REGISTER OF DEEDS
FOREST COUNTY WI
PAGES: 1

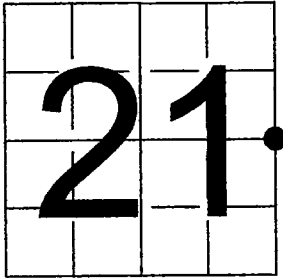
INDEX#:

U S PUBLIC LAND SURVEY MONUMENT RECORD

NOTE: This form is intended and designed to fulfill all requirements of Wisconsin Administrative Code, Chapter A-E 7.08 U.S. Public Land Survey Monument Record (3) (a-i)

A-E 7.08(3)(a) Identity of corner:
EAST 1/4 CORNER SECTION 21,
TOWNSHIP 37 NORTH,
RANGE 16 EAST OF THE 4TH PM,
TOWN OF ARMSTRONG CREEK,
COUNTY OF FOREST

WISCRS - FOREST COUNTY
N: 607,677.856 USft (XXX,XXX.XXX)
E: 942,316.672 USft (XXX,XXX.XXX)
Datum: NAD83 (2011)
GNSS Method RTK
GNSS Control WISCORS VRS



The coordinate value shown has been verified by the average of two or more GPS observations at a markedly different time. Coordinates shown in parenthesis are previously published values.

A-E 7.08(3)(b)

Original Surveyor: James McBride

Date of Original Survey Commenced: July 11, 1859
 Completed: July 16, 1859

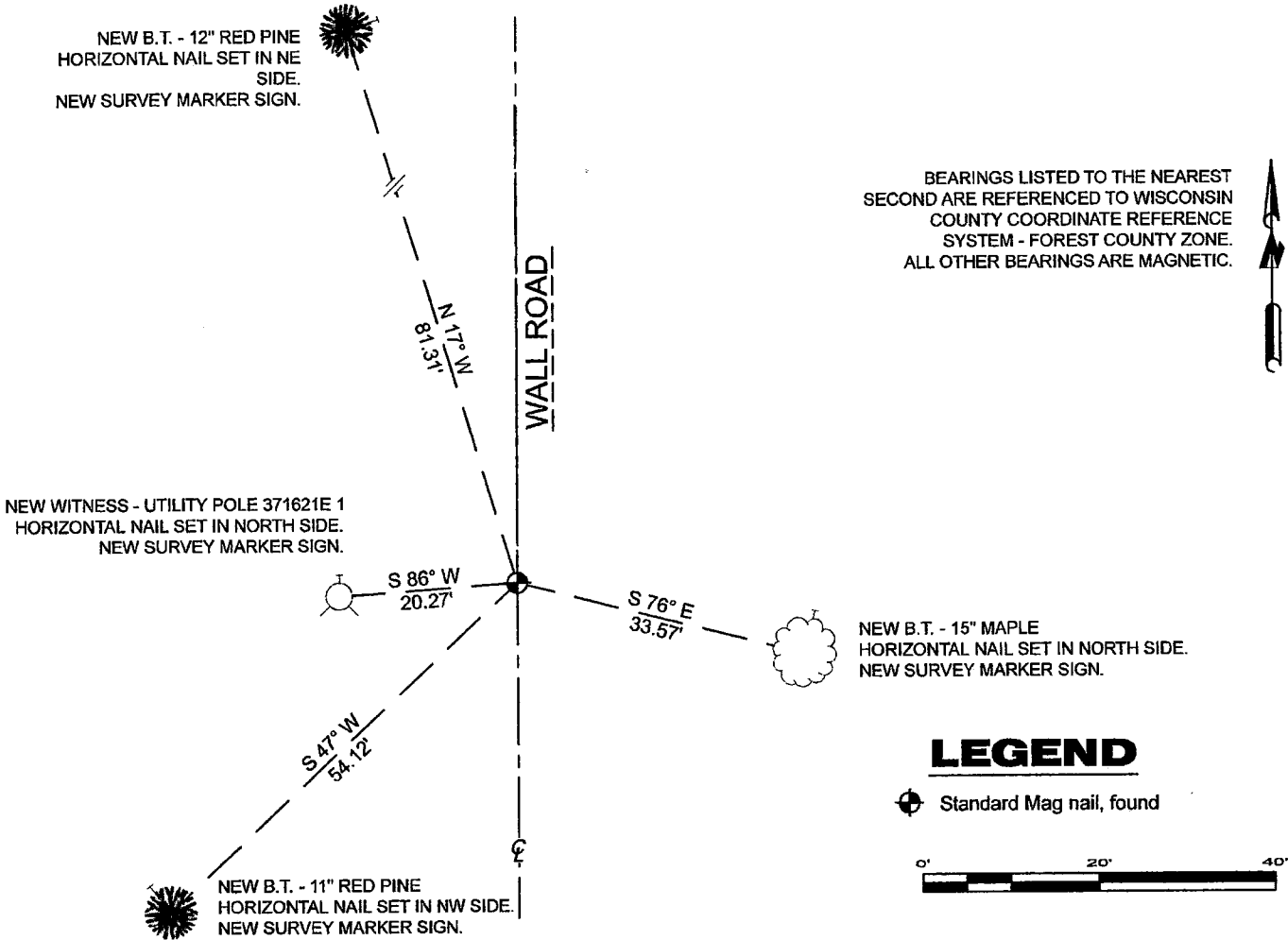
Original Accessories:
Hemlock 8 N 58° W 20 Links
Hemlock 7 N 67° E 16 Links

THENCE:

July 15, 2011 - Surveyor 809 - Michael S. Hess - indicate this position as "PK nail found" on Forest Co. Surveyor File #371622-20110715.

June 07, 2023 - I found a standard size Mag nail near the centerline of Wall Road. There is an old fence line running west and east from the corner position.
I established 4 new reference monuments as shown below.

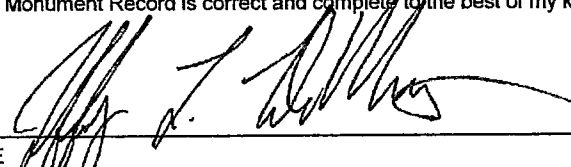
A-E 7.08(3)(c)(d) Plan view of corner with references to at least 4 witness monuments.

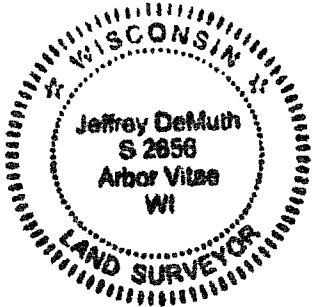


A-E 7.08(3)(e) 1859 Surveyor set a post, 2011 Surveyor found a PK nail. I found a standard size Mag nail.

A-E 7.08(3)(f) I accept this monument as a FOUND PERPETUATED LOCATION of the corner.
A-E 7.08(3)(g)(h) This corner was not determined through lost-corner-proportionate methods.

A-E 7.08(3)(i) I, Jeffrey L. DeMuth, Professional Land Surveyor No. S-2656, hereby certify that the corner location on this record was determined by me or under my direction and control, and that this U.S. Public Land Survey Monument Record is correct and complete to the best of my knowledge, and belief.

SIGNATURE  DATE August 23, 2023



43716212000

P13