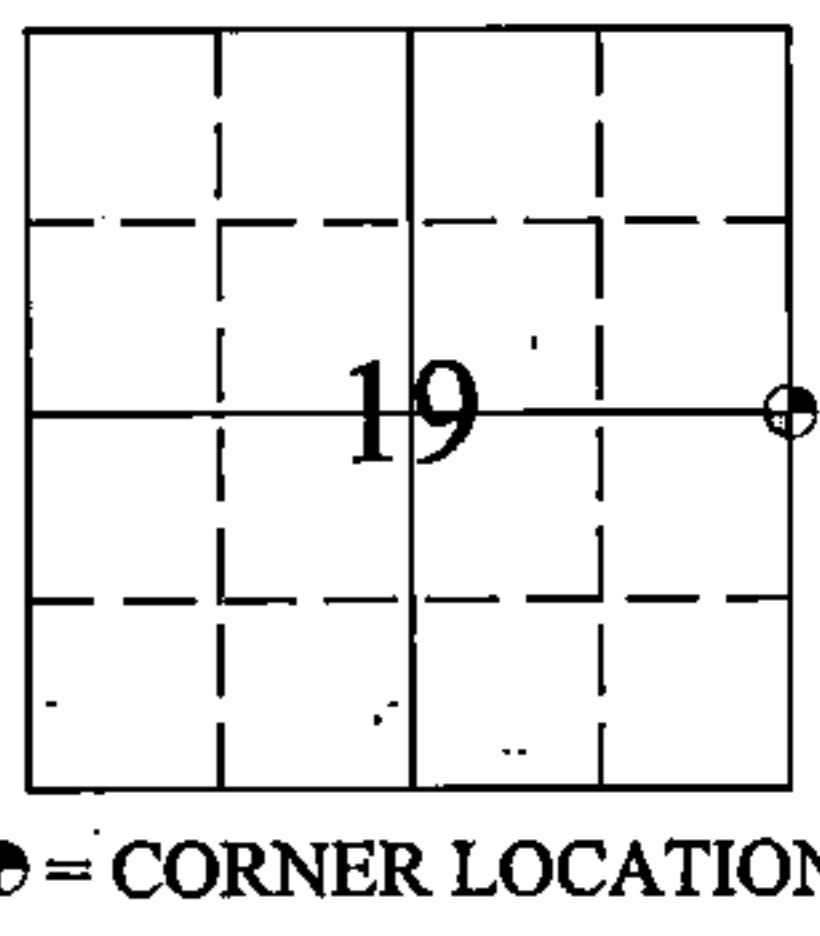


REGISTER'S OFFICE
Forest County, Wis.
Received for record this 3rd day
of February A.D., 2016 at
9:00 o'clock A.M. and recorded
in Vol. Corner Restoration
page P5
Erika L. Dalton, Deputy
Register of Deeds.

U.S. PUBLIC LAND SURVEY MONUMENTATION RECORD
(AS REQUIRED BY S. A-E 7.08, WI ADM. CODE)

CORNER: EAST 1/4 INDEX NUMBER: P-5
SECTION: 19 TOWNSHIP: T37N RANGE: R16E
TOWN/CITY/VILLAGE: TOWN OF ARMSTRONG CREEK
COUNTY: FOREST STATE: WISCONSIN

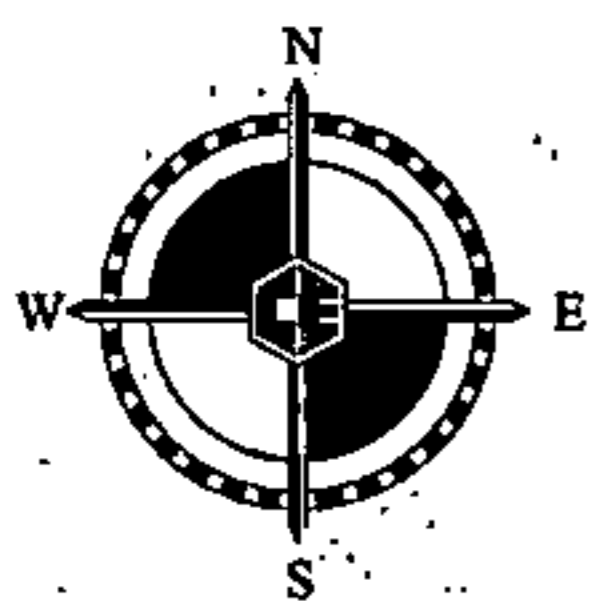


HISTORY OF ORIGINAL CORNER ESTABLISHMENT AND SUBSEQUENT RESTORATIONS AND DESCRIPTION OF ANY RECORD, MONUMENT, OCCUPATIONAL, TESTIMONIAL, OR OTHER EVIDENCE CONSIDERED:

JULY 1859: JAMES McBRIDE, SET QUARTER SECTION POST
10" SUGAR S67°W 22 LINKS
10" NORWAY PINE S21°E 15 LINKS

CORNER WAS: (CHECK ALL THAT APPLY)

- RESTORED THROUGH ACCEPTANCE OF AN OBLITERATED LOCATION
- RESTORED THROUGH ACCEPTANCE OF A FOUND PERPETUATED LOCATION
- RESTORED OR REESTABLISHED IN A LOCATION THAT DIFFERS FROM A PREVIOUS RESTORATION OR REESTABLISHMENT (INCLUDE A PLAN VIEW DRAWING AND INDICATE WHAT WAS SET AND/OR FOUND)
- CONSIDERED A LOST CORNER AND REESTABLISHED THROUGH LOST CORNER PROPORTIONATE METHODS (INCLUDE A PLAN VIEW DRAWING SHOWING DISTANCES AND DIRECTIONS TO OTHER PUBLIC LAND SURVEY CORNERS USED FOR PROPORTIONING AND DETERMINING THE CORNER LOCATION).

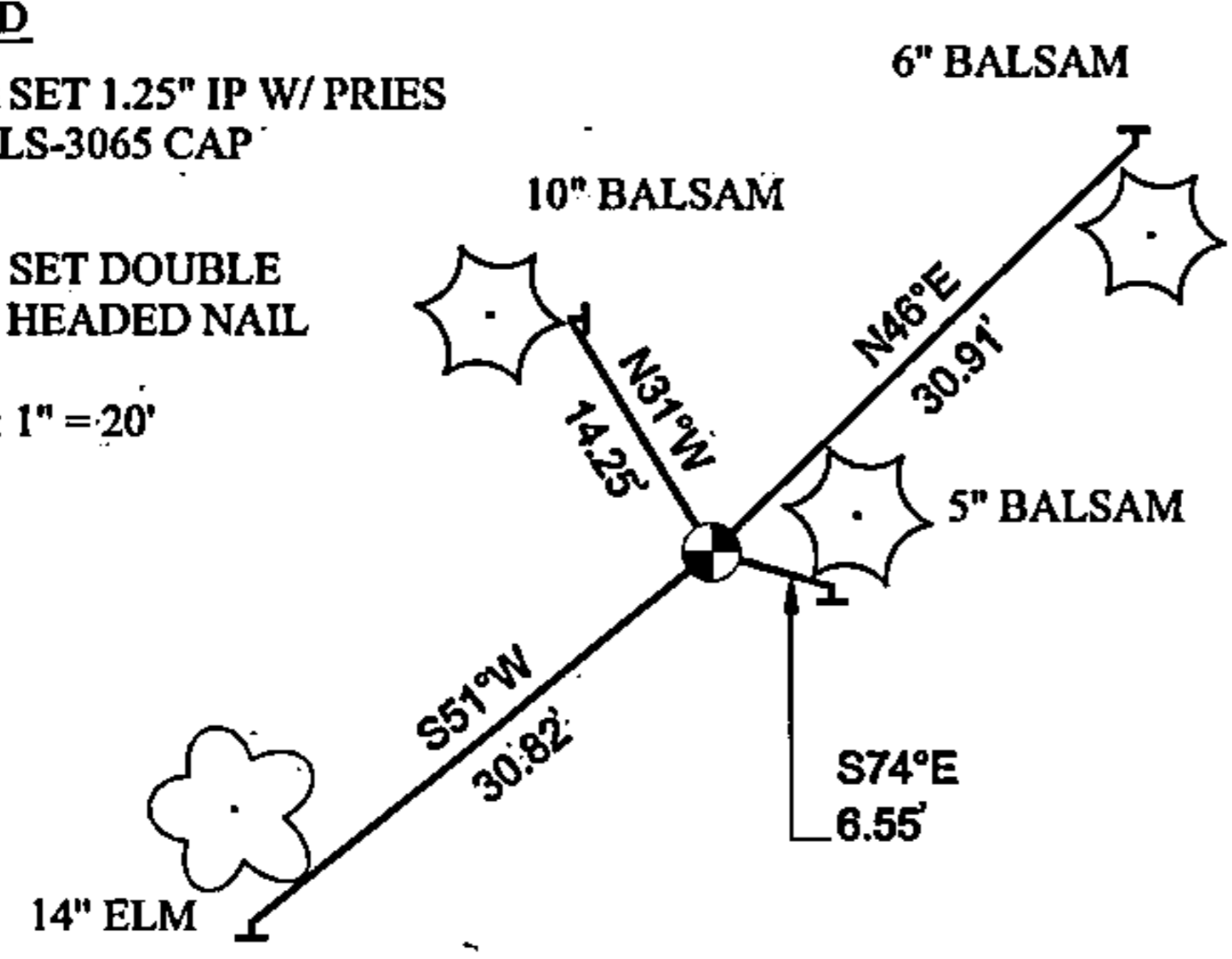


LEGEND

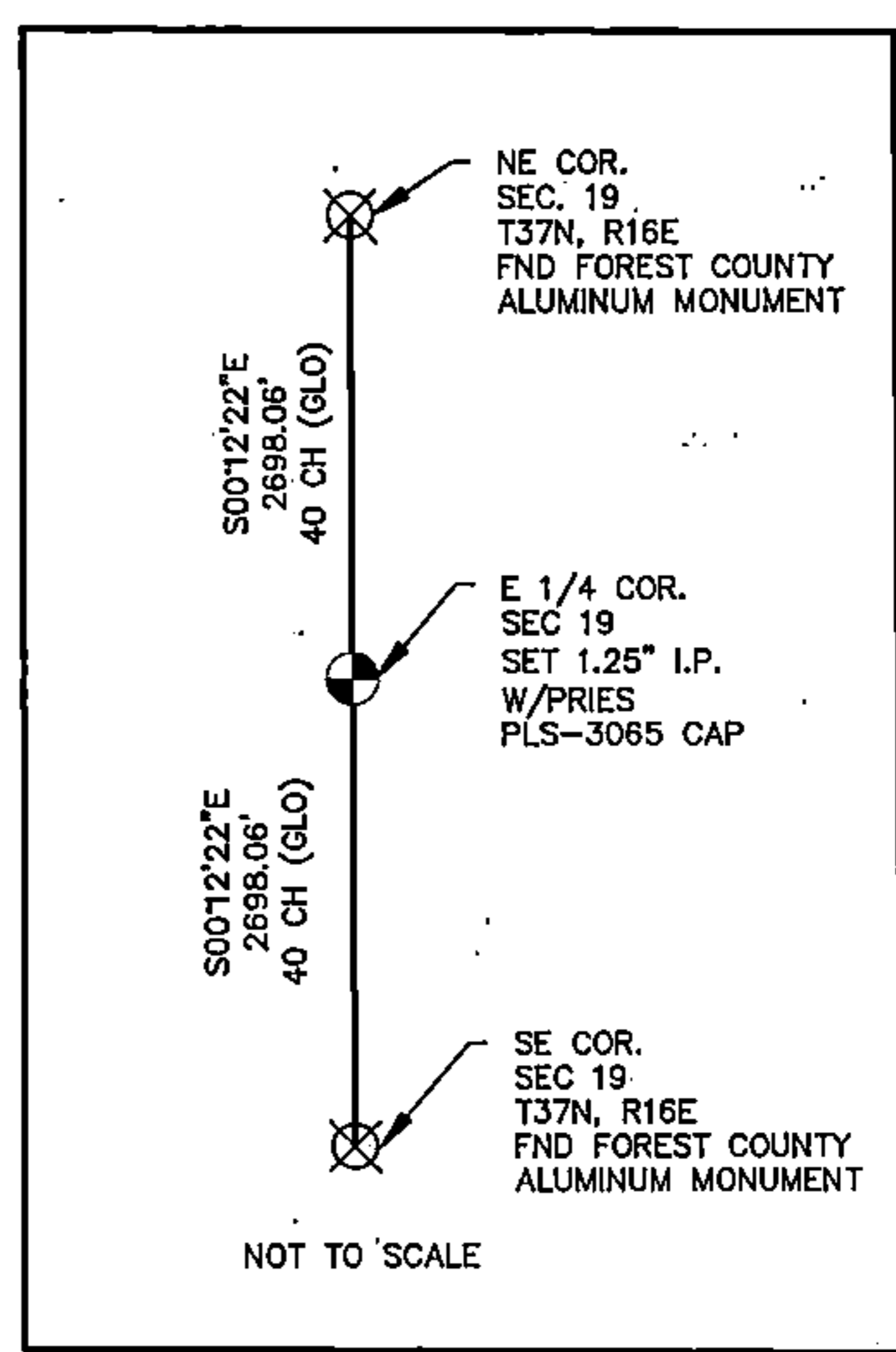
⊙ = SET 1.25" IP W/ PRIES PLS-3065 CAP

⌣ = SET DOUBLE HEADED NAIL

SCALE: 1" = 20'



43716192000



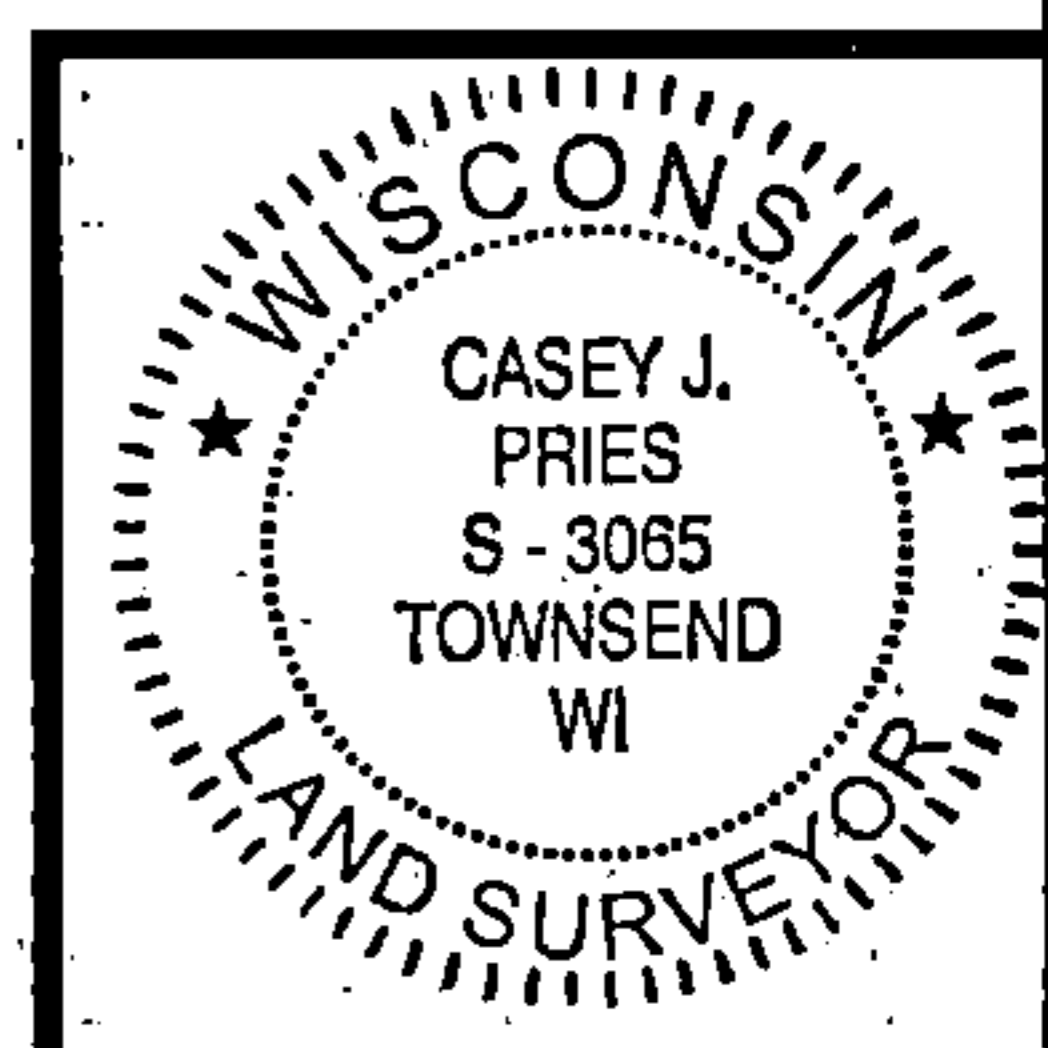
DESCRIBE THE MONUMENT AND ACCESSORIES USED TO PERPETUATE THE LOCATION OF THIS CORNER. (INCLUDE A PLAN VIEW DRAWING AND INDICATE WHAT WAS SET AND/OR FOUND)

CASEY J. PRIES PLS# S-3065, SET 1.25" IRON PIPE WITH PRIES PLS-3065 SURVEY CAP USING SINGLE PROPORTIONATE METHODS.

SET THE FOLLOWING WITNESSES:

6" BALSAM	N46°E	30.91 FT, NAIL ON NORTH SIDE
5" BALSAM	S74°E	6.55 FT, NAIL ON SOUTH SIDE
14" ELM	S51°W	30.82 FT, NAIL ON SOUTH SIDE
10" BALSAM	N31°W	14.25 FT, NAIL ON EAST SIDE

NOTE: ALL WITNESS TREES HAVE CHEST AND STUMP BLAZES WITH DOUBLE HEADED NAIL AT BASE. DISTANCES ARE MEASURED TO DOUBLE HEADED NAIL.



SIGNATURE: Casey Pries DATE: 1-26-16

Index No. P-5

I, CASEY J. PRIES, PLS S-3065,
CERTIFY THAT THE CORNER LOCATION SHOWN ON THIS ABOVE RECORD WAS DETERMINED BY ME OR UNDER MY DIRECTION AND CONTROL AND THAT THIS U.S. PUBLIC LAND SURVEY MONUMENTATION RECORD IS CORRECT AND COMPLETE TO THE BEST OF MY KNOWLEDGE AND BELIEF.



COLEMAN ENGINEERING COMPANY
635 CIRCLE DRIVE, IRON MOUNTAIN, MI 49801
PHONE: (906) 774-3440 FAX: (906) 774-7776

DRAWN: MJT	FB 457, PG: 29	DATE: 1/26/16	JOB NO. 16011
---------------	----------------	---------------	------------------

P5