

Document Number
178782

REGISTER'S OFFICE
Forest County, Wis.

Received for record this 17th day
of MARCH A.D., 2003 at
3:00 o'clock P.M. and recorded
in Vol. CORNER RESTORATIONS
page 37-16, L-5

Paul A. Schenker
Register of Deeds

U.S. PUBLIC LAND SURVEY MONUMENT RECORD

(As Required by WI Adm. Code)

History of original corner establishment and subsequent restorations and descriptions of any record, monument, occupational, testimonial or other evidence considered:

1859 - James McBride, set original corner post and made the following B.T.'s:

- Cedar, 8", N 79° E, 5 lks., 3.30 feet.
- Cedar, 8", West, 6 lks., 3.96 feet.

2003 - I found no evidence of the original corner post or accessories.

Reestablished corner midpoint and on line between the Northeast corner & the Southeast corner of Section 18. I set a 2" X 36" Forest County Aluminum pipe monument at this point.

Corner was: (Check All That Apply)

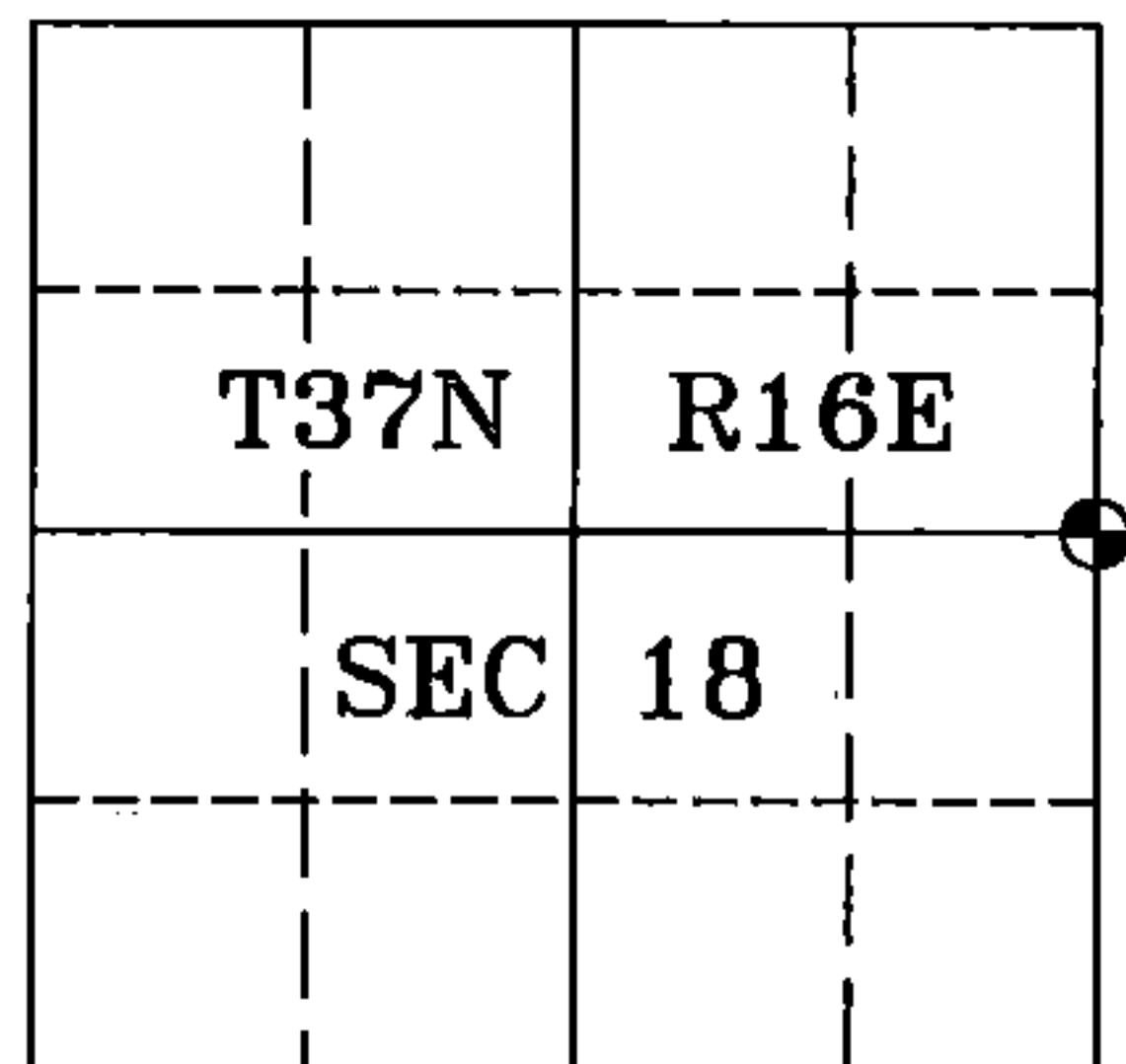
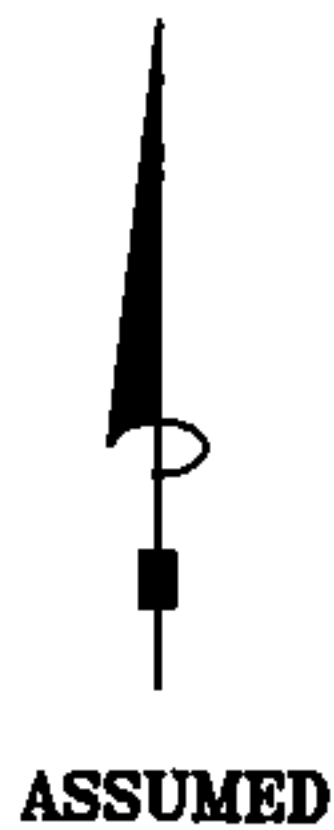
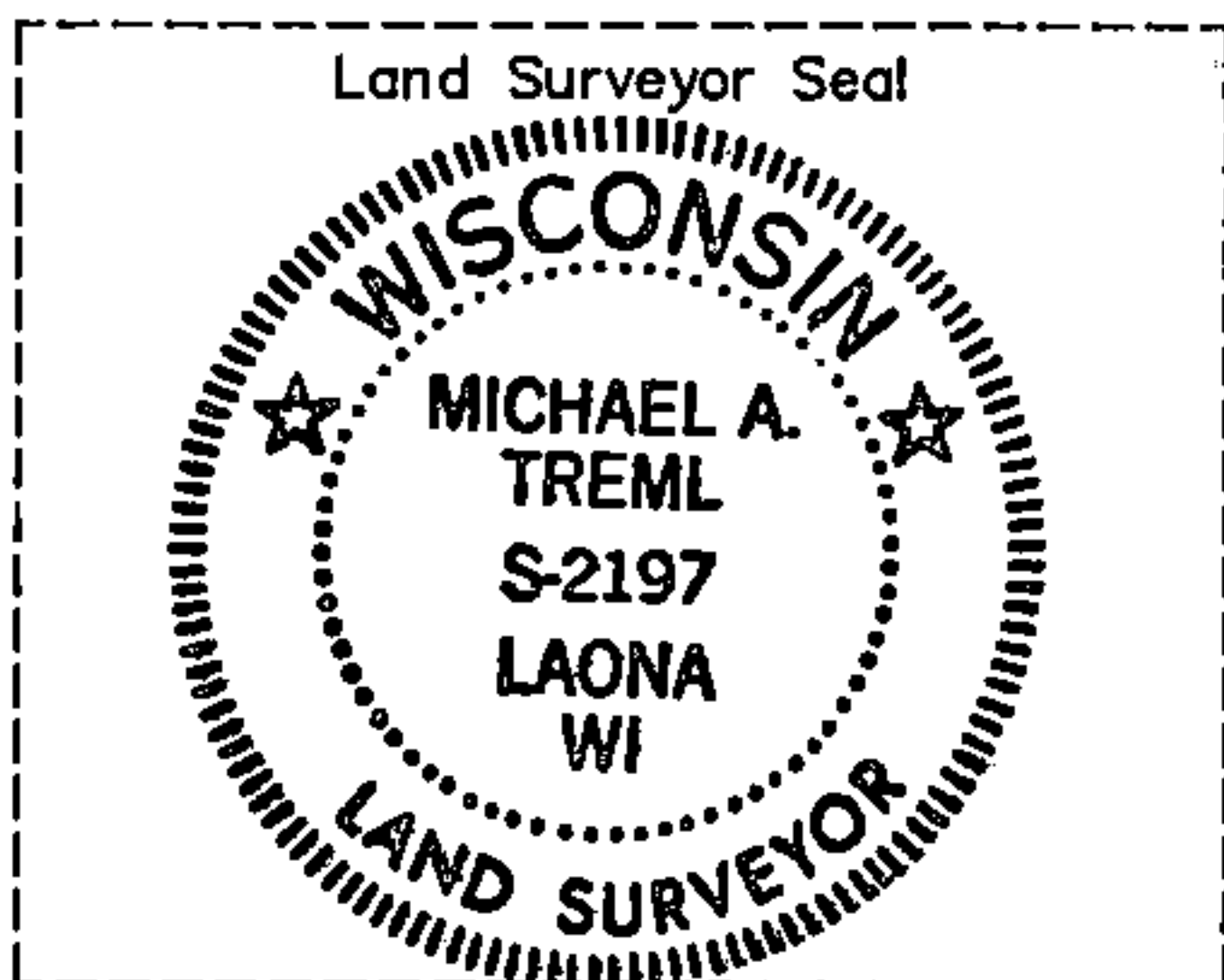
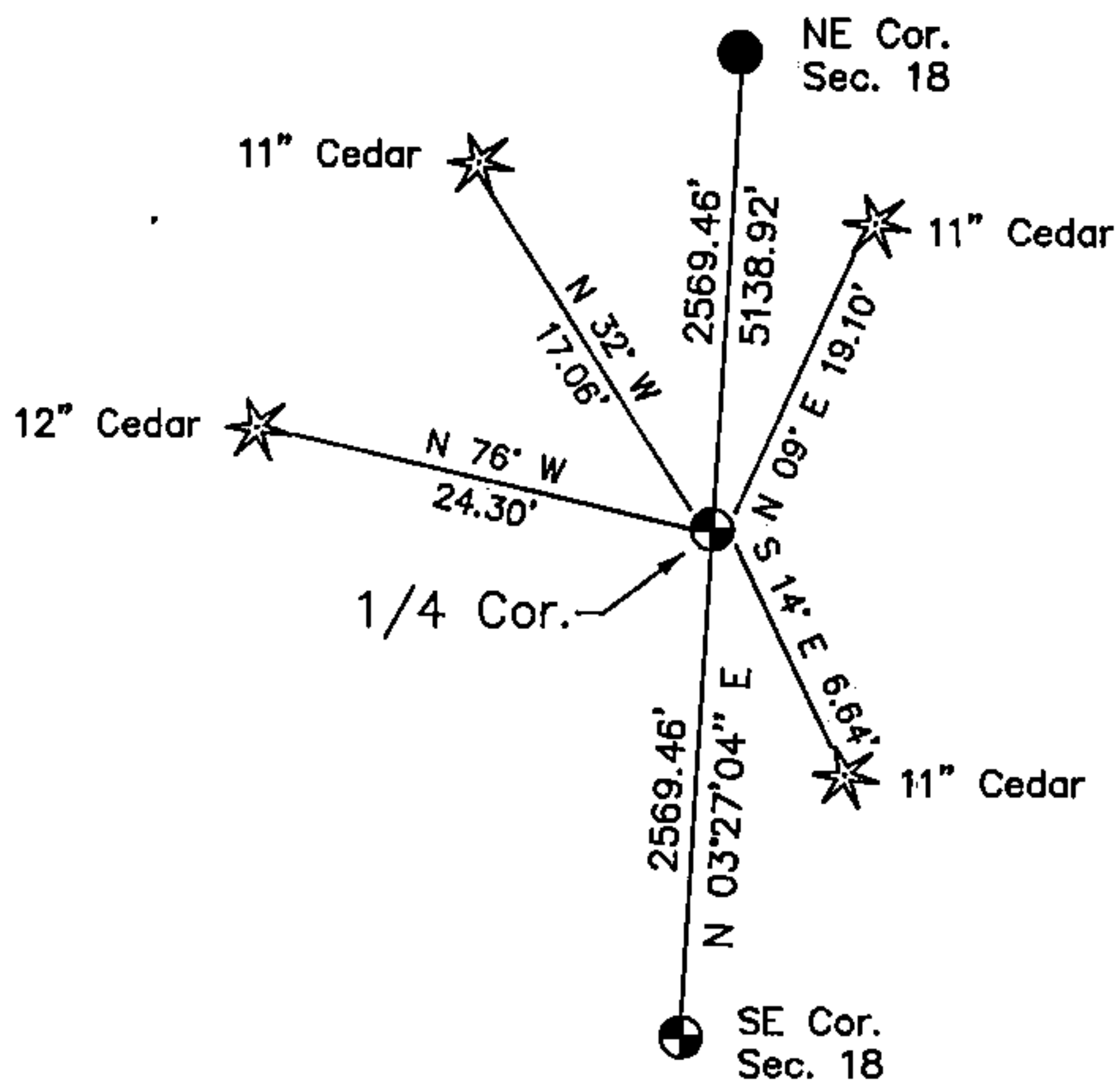
- Restored through acceptance of an obliterated evidence location.
- Restored through acceptance of a found perpetuated location.
- Considered a lost corner and reestablished through lost corner proportionate methods (include a plan view drawing showing distances and directions to other Public Land Survey Corners used for proportioning and determining the corner location).
- Restored or reestablished in a location that differs from a previous restoration or reestablishment (include a plan view drawing and indicate what was set and/or found).

Describe the monument and accessories used to perpetuate the location of this corner (include a plan view drawing and indicate what was set and/or found).

LEGEND:

- Forest County Aluminum Pipe Monument Set
- 2" Dia. Aluminum Pipe Monument Found

Note: All distances are taken to nail in side of tree.



I, Michael A. TremL, RLS
(type or print name) certify that the corner location shown on this record was determined by me or under my direction and control and that this U.S. Public Land Survey Monument Record is correct and complete to the best of my knowledge and belief.

Michael A. TremL 2/18/03
Signature Date

The East Quarter corner of
Section 18 T. 37 N., R. 16 E.
Forest County, WI

Index No. L-5

43716182000