

Document Number
178784

REGISTER'S OFFICE
Forest County, Wis.

Received for record this 12th day
of MARCH A.D., 2003 at
3:00 o'clock P.M. and recorded
in Vol. CORNER RESTORATIONS
page 3716 N3

Saul Achenbach
Register of Deeds

U.S. PUBLIC LAND SURVEY MONUMENT RECORD

(As Required by WI Adm. Code)

History of original corner establishment and subsequent restorations and descriptions of any record, monument, occupational, testimonial or other evidence considered:

1859 - James McBride, set original corner post and made the following B.T.'s:

- Tamarack, 16", N 45° W, 32 lks., 21.12 feet.
- Tamarack, 16", N 65° E, 33 lks., 21.78 feet.
- Tamarack, 16", S 32° E, 22 lks., 14.52 feet.
- Tamarack, 16", S 57° W, 17 lks., 11.22 feet.

2003 - I found a 4" X 42" squared cedar painted red marking the corner. Cedar is located on the north end of a N-S blazed line through a cedar swamp. This position is consistent with the record distance to the quarter section corner South and the record swamp call to the West. I accepted this position as the best available evidence for the corner position and set a 2" X 36" Forest County Aluminum Pipe Monument for the Section Corner.

Corner was: (Check All That Apply)

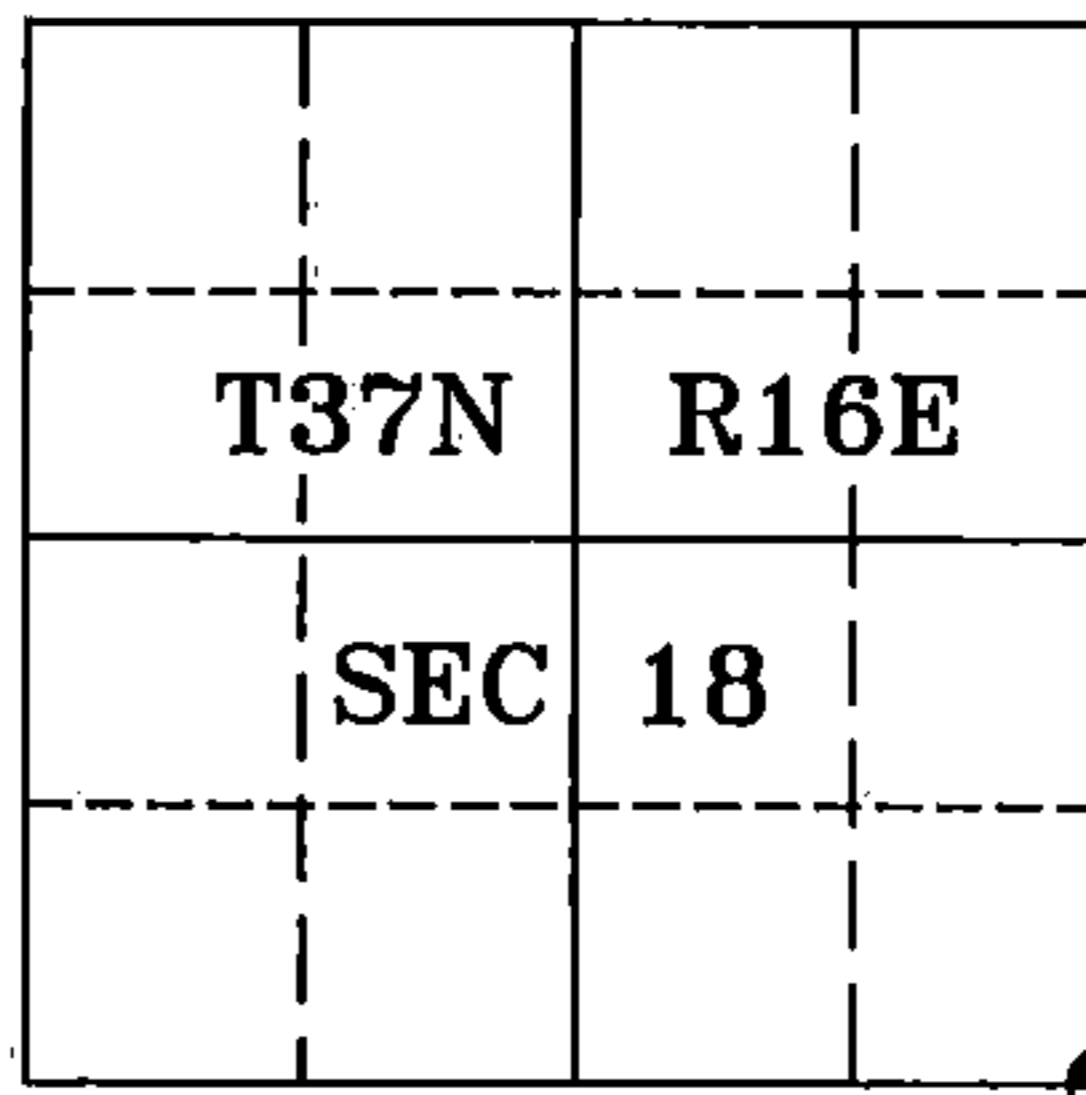
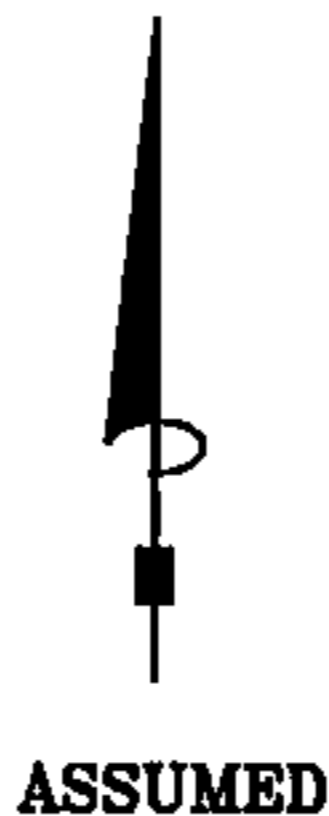
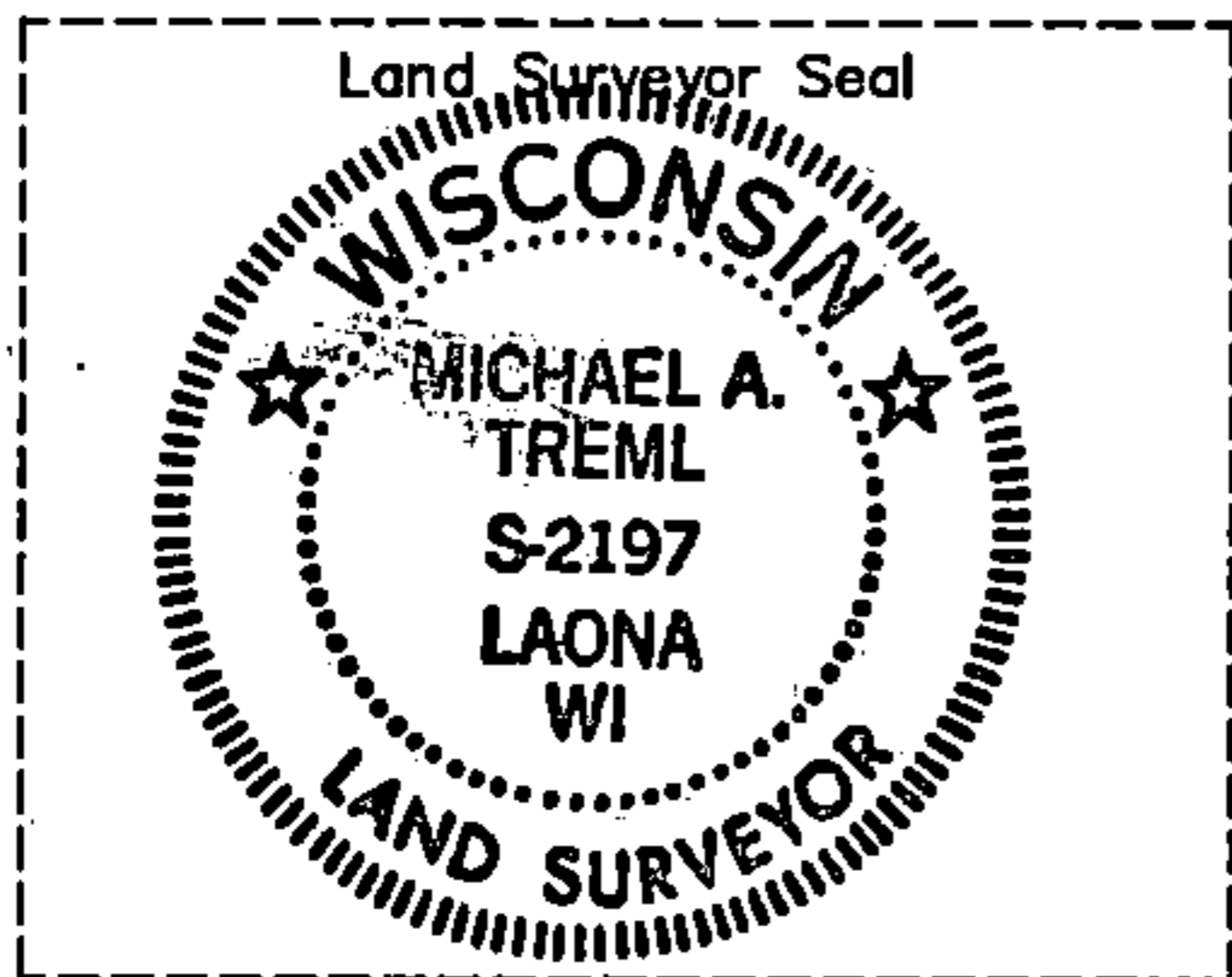
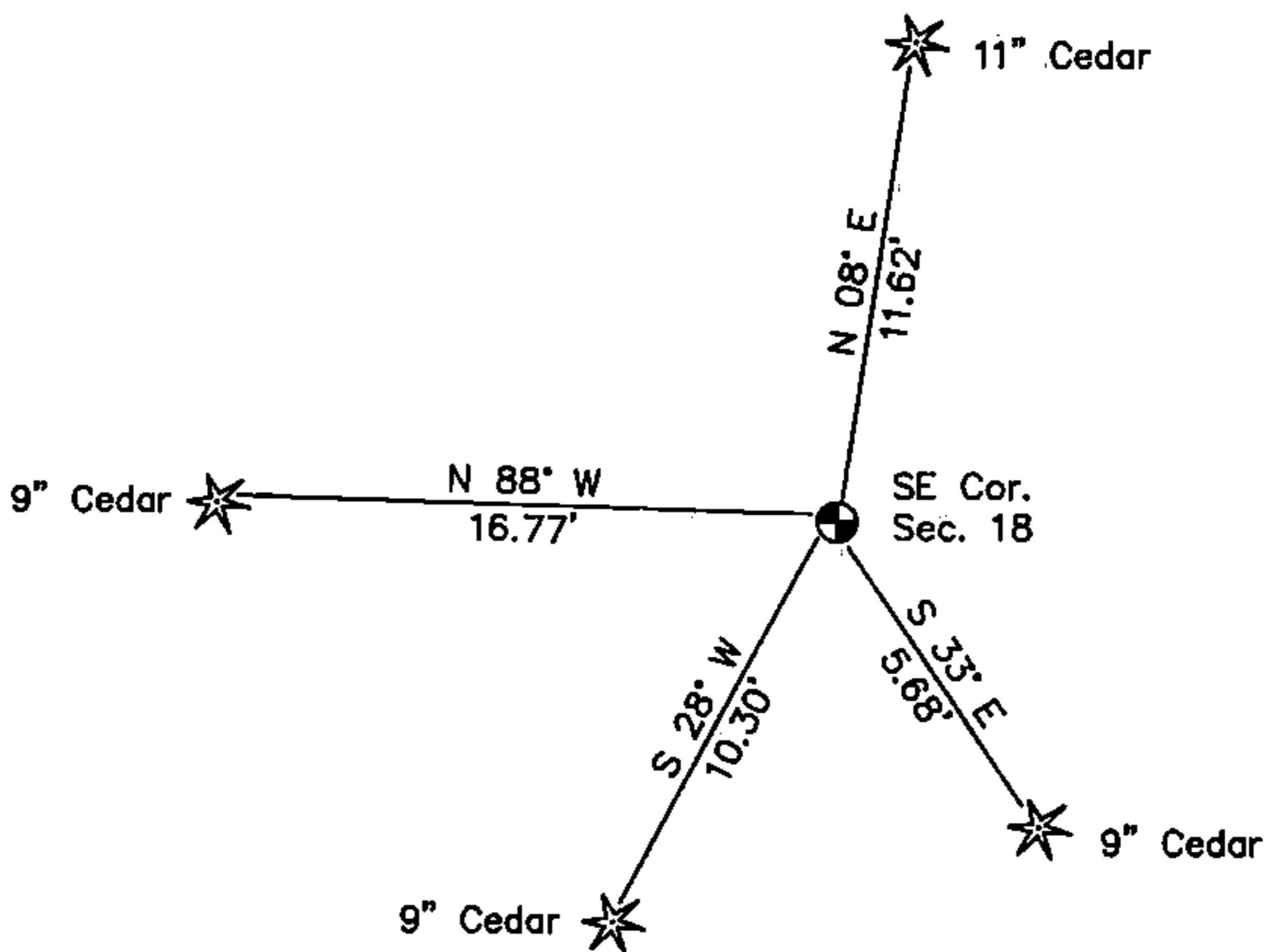
- Restored through acceptance of an obliterated evidence location.
- Restored through acceptance of a found perpetuated location.
- Considered a lost corner and reestablished through lost corner proportionate methods (include a plan view drawing showing distances and directions to other Public Land Survey Corners used for proportioning and determining the corner location).
- Restored or reestablished in a location that differs from a previous restoration or reestablishment (include a plan view drawing and indicate what was set and/or found).

Describe the monument and accessories used to perpetuate the location of this corner (include a plan view drawing and indicate what was set and/or found).

LEGEND:

⊕ Forest County Aluminum
Pipe Monument Set

Note: All distances are
taken to nail in
side of tree.



I, Michael A. Trembl, RLS
(type or print name) certify that the corner location shown on
this record was determined by me or under my direction and
control and that this U.S. Public Land Survey Monument Record
is correct and complete to the best of my knowledge and belief.

Michael A. Trembl 2/17/03
Signature Date

The Southeast corner of
Section 18 T. 37 N., R. 16 E.
Forest County, WI

Index No. N-5

43716180000