

# U.S. PUBLIC LAND SURVEY MONUMENT RECORD

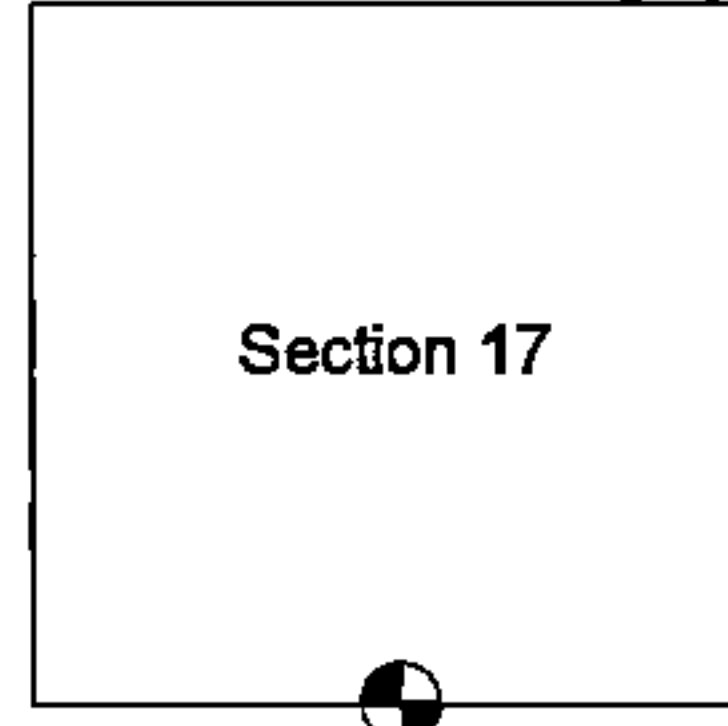
NOTE: This form is intended and designed to fulfill all requirements of Wisconsin Administrative Code, Chapter A-E 5.02, U.S. Public Land Survey Monument Record (3) (a) (b) (c) (d) (e) (f) (g) (h) (i). An additional sheet may be added if necessary to conform with said requirements.

(a) Corner location: Township 37 North

Range 16 East

Town/City/Village Armstrong Creek

County Forest



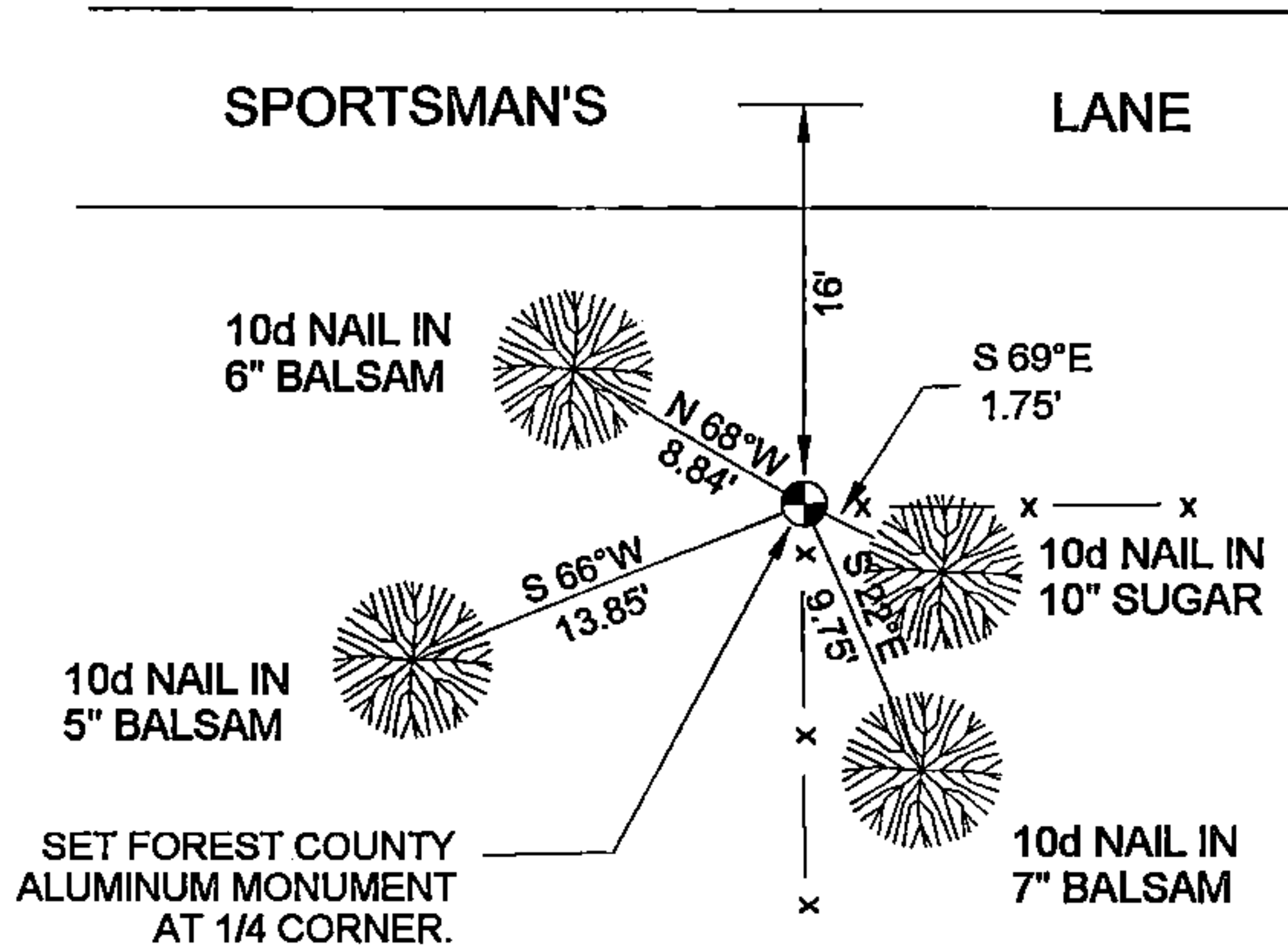
Section 20

ONE-QUARTER CORNER COMMON TO SECTIONS 17 AND 20, T37N - R16E

(b) (f) (g) (h) Description of monument found at this corner and if it was accepted, state all evidence (material, testimonial, occupation, plats, records, other monuments) used as a basis for accepting. If not accepted or if nothing was found, state evidence used as basis for establishing location. If reestablished through lost corner proportionate methods, indicate all monuments, distances and direction used to establish.

*No original corner evidence was found. At the corner position I found an ancient fence corner and steel fence rail on the South side of Sportsman's Lane. An ancient, fallen, post and wire fence runs South and East from corner post. This position measures 2642.99 feet to the Section corner to the East and 2668.03 feet to the Section corner to the West. I accepted the ancient fence corner as the best available evidence of the One-quarter corner position and monumented this location.*

(c) (d) (e) Plan view of corner with ties to at least 4 witness monuments. If in disagreement with previously established corner, show the distance between the two corners and also indicate the ties to the disputed corner.



(i) I, STEVEN R. APPLEKAMP

(type or print name) certify that the corner location on this record was determined by me or under my direction and control and that this U.S. Public Land Survey Monument Record is correct and complete to the best of my knowledge and belief.

Steven R. Applekamp April 16th 12  
Signature Date

INDEX NO. N-7

43716170020

N-7