

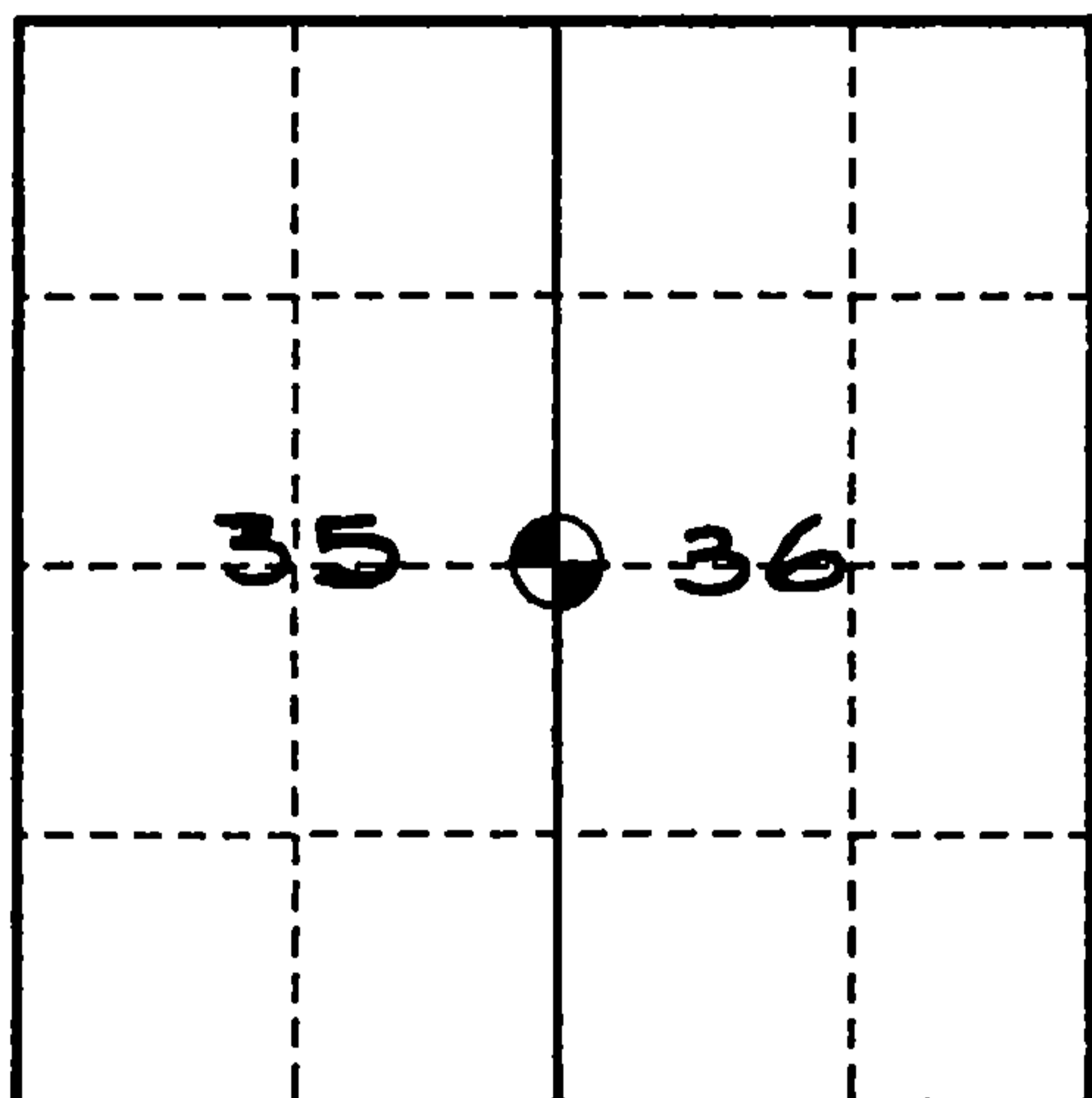
U. S. PUBLIC LAND SURVEY MONUMENT RECORD

INSTRUCTIONS:

This record shall show the location of the corner and shall include all of the following nine elements (a through i).

- (a) Identify the corner by reference to the U.S. public land survey system.
- = Corner monument restored.

One-quarter corner common to Sections 35 & 36, T37N, R15E, Forest County, WI.



- (b) Describe any record evidence, monument evidence, occupational evidence, testimonial evidence or any other material evidence you considered, and whether the monument was found or placed.

Original survey by J.L. Nowlin in August 1865.

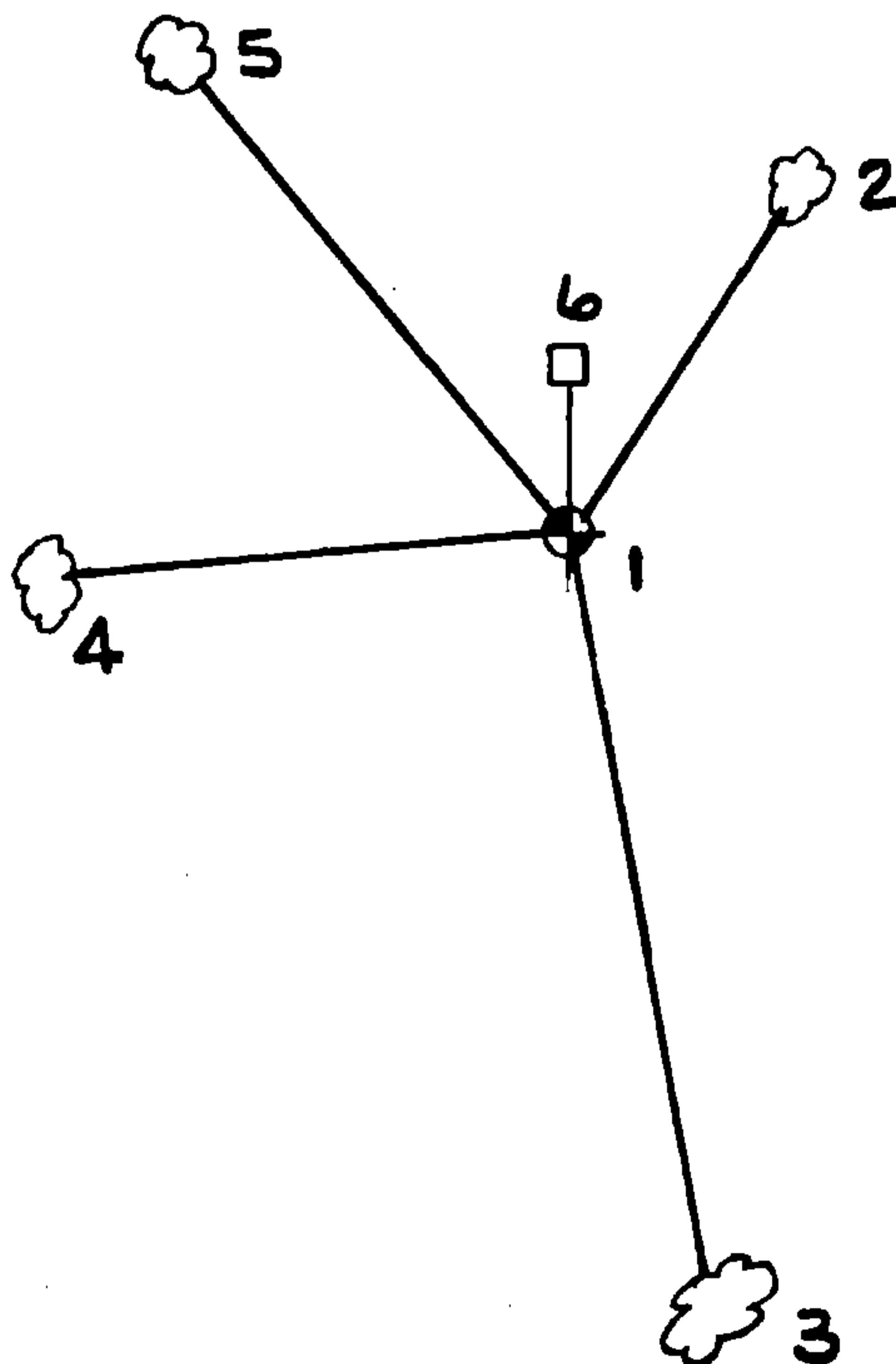
40 chains set post.

Spruce 12" - S65°W, 23 links
 Fir 7" - N17°E, 30 links

On March 12, 1995, John Garske, RLS, made a thorough search for the corner and any evidence and was unable to find anything. I placed a 2" x 36" aluminum capped monument at a proportional position and made the following references below.

- (c) In the plan view drawing below, provide reference ties to at least 4 witness monuments, or, if the location is within a municipality, to at least 2 witness monuments. (witness monuments shall be made of concrete, natural stone, iron or other equally durable material.)

- (d) Show a plan view drawing depicting the relevant monuments and reference ties which is sufficient in detail to enable accurate relocation of the corner monument if the corner monument is disturbed. Indicate north.



- 1- 2" x 36" aluminum pipe with a stamped cap to identify corner.
- 2- Black cherry, 6" - N33°E, 25.62 feet.
- 3- Spruce, 10" - S11°E, 89.80 feet.
- 4- Spruce, 14" - S85°W, 58.64 feet.
- 5- Maple in clump, 11" - N40°W, 43.41 feet.
- 6- Steel sign post - North, 1.40 feet.

(e) Describe any material discrepancy between the location of the corner as restored or reestablished and the location of that corner as previously restored or reestablished by distance and direction. Show the discrepancy on the plan view drawing under (d), above. Show the distances between the corner as previously restored or reestablished and (1) the corner as restored or reestablished, and (2) to at least 2 of the witness monuments shown on the drawing in (d), above.

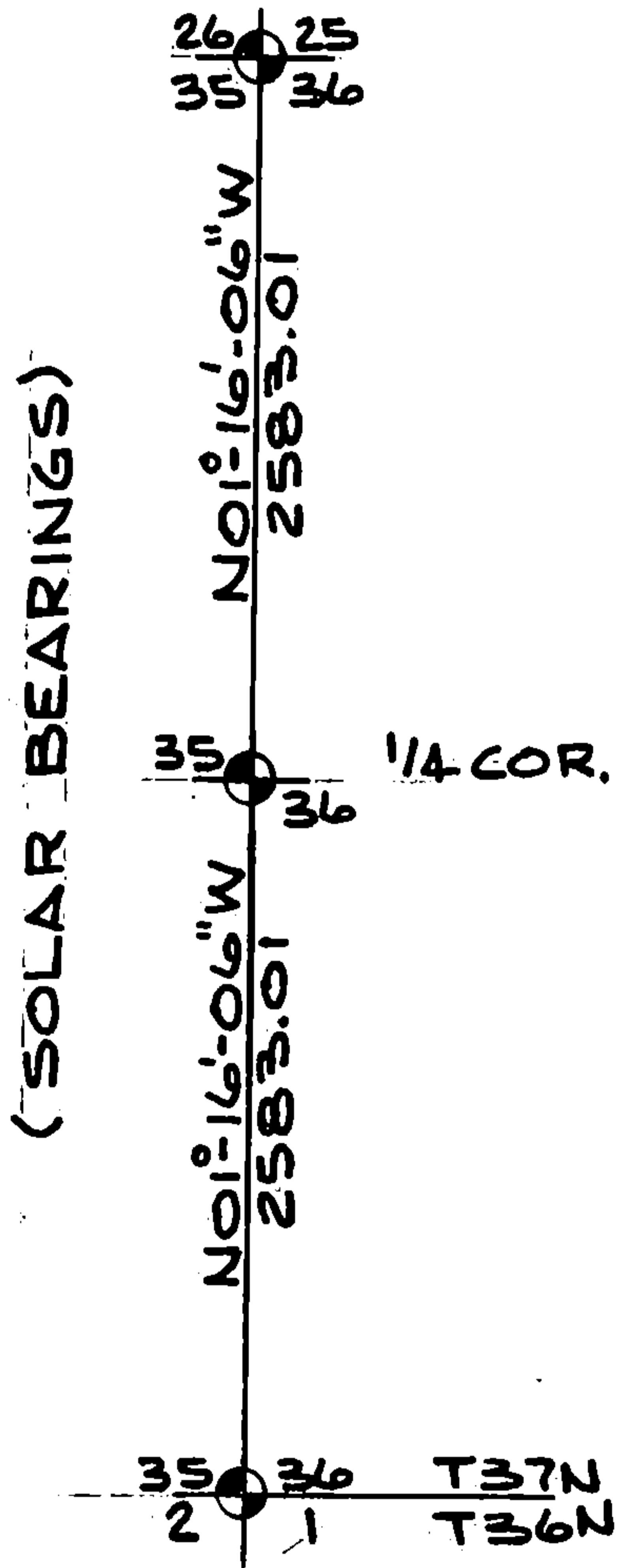
None

(f) Was the corner restored through acceptance of (1) an obliterated evidence location, or, (2) a found perpetuated location?

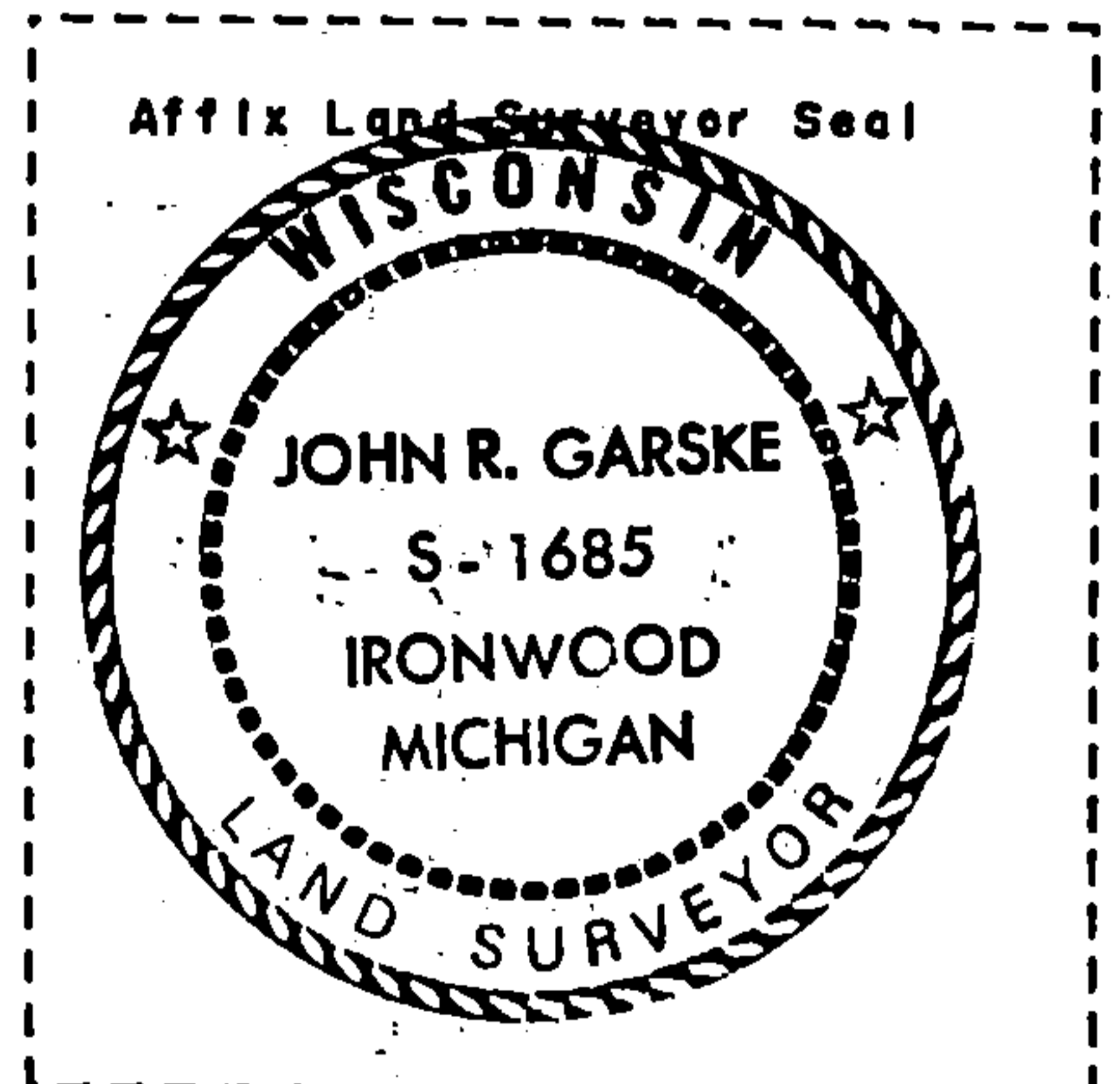
No

(g & h) Was the corner reestablished through lost corner proportionate methods? If so, show the method, including the directions and distances to other public land survey corners used as evidence or used for proportioning in determining the corner location?

Yes, single proportionate method.



REGISTER'S OFFICE
 Forest County, Wis.
 Received for record this 10th day
 of May A.D. 1995 at
8:30 o'clock A.M. and recorded
 in Vol. Case Restorations
 page 37-15, X-21
Paul Little
 Register of Deeds



(1) I, John R. Garske, S-1685

(type or print name) certify that the corner location shown on this record was determined by me or under my direction and control and that this U.S. Public Land Survey Monument Record is correct and complete to the best of my knowledge and belief.

John R. Garske

4/25/95

Signature

Date

CERTIFICATE READY FOR FILING:

Tracy Streck

District Ranger