



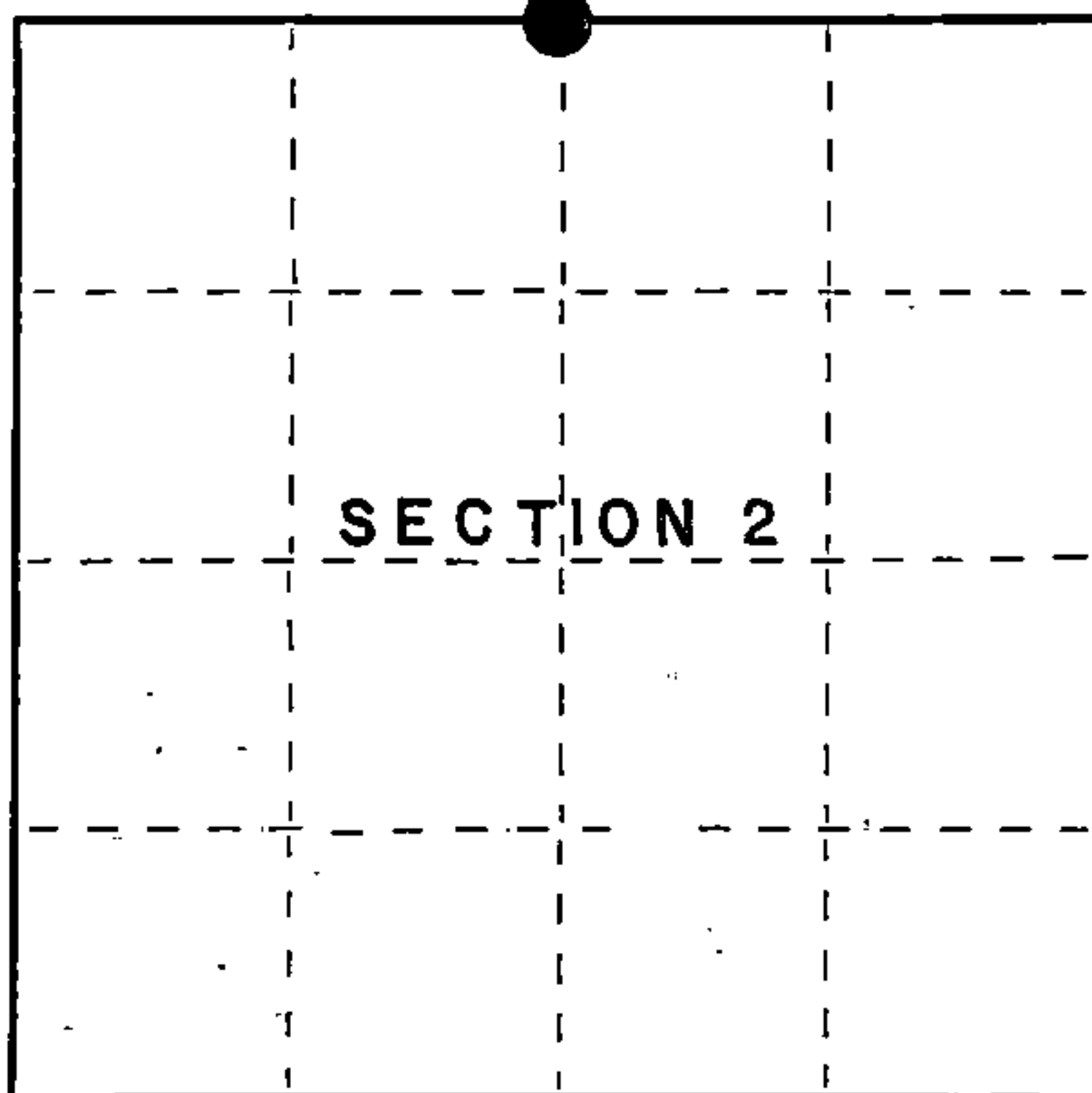
Stock No. 26273

158105

State of Wisconsin }
County of Forest } ss.

I, Gary L. Pisoni, do hereby
certify that on the 4th day
of October, 1994, I found
evidence of the North Quarter
corner of Section 2
Township 36- North, Range
15 East, Fourth Principal Meridian,
as described hereon; and that from this evidence
I established a new monument and accessories
as described hereon to perpetuate the original
location of this corner.

Resident witnesses:



● = Corner monument restored.

CERTIFIED LAND CORNER RESTORATION

Index No. A-19

History of original corner establishment:

Original Government Survey in 1857 by Artemas Curtis.
West between Sections 35 and 2, at 40.00 chains, set Quarter Section post
to Sections 35 and 2, from which the following bear:

White Pine	10"	N 05° W	30 lks.
Aspen	10"	S 40° E	30 lks.

Description of corner evidence found:

Restored the corner position from a found large White Pine bearing tree stump, bearing
N 05° W, 30 lks. from quarter corner position.

Description of monument and accessories I established to perpetuate the original location of this corner.

At the corner position, set a 2½ inch diameter aluminum pipe monument, 3 feet long,
3 inches above the ground surface, with an aluminum cap stamped: T37N, R15E, 1/4,
S-35, S-2, T36N, 1994, S-1634; from which the following new blazed and scribed
bearing trees bear: (all measurements taken to a nail in side of tree)

Black Spruce	8"	N 46° E	6.22 feet
Sugar Maple	14"	S 43° E	26.55 feet
White Birch	9"	S 61° W	14.61 feet
Red Maple	6"	N 27° W	26.04 feet
Steel sign post		South	1.00 feet

Dated at Iron River, MI, this 8th day of April, 1995

Signature: Gary L. Pisoni Title: Land Surveyor Registration No. S-1634
(County Surveyor, Registered Land Surveyor, or other duly authorized official)

Office of Register of Deeds, County of Forest, I hereby certify that the within
instrument was filed in this office for record on the 20th day of March, 1997
at 1:30 o'clock P. M.

(Register of Deeds)

By: [Signature] Deputy

43715350020

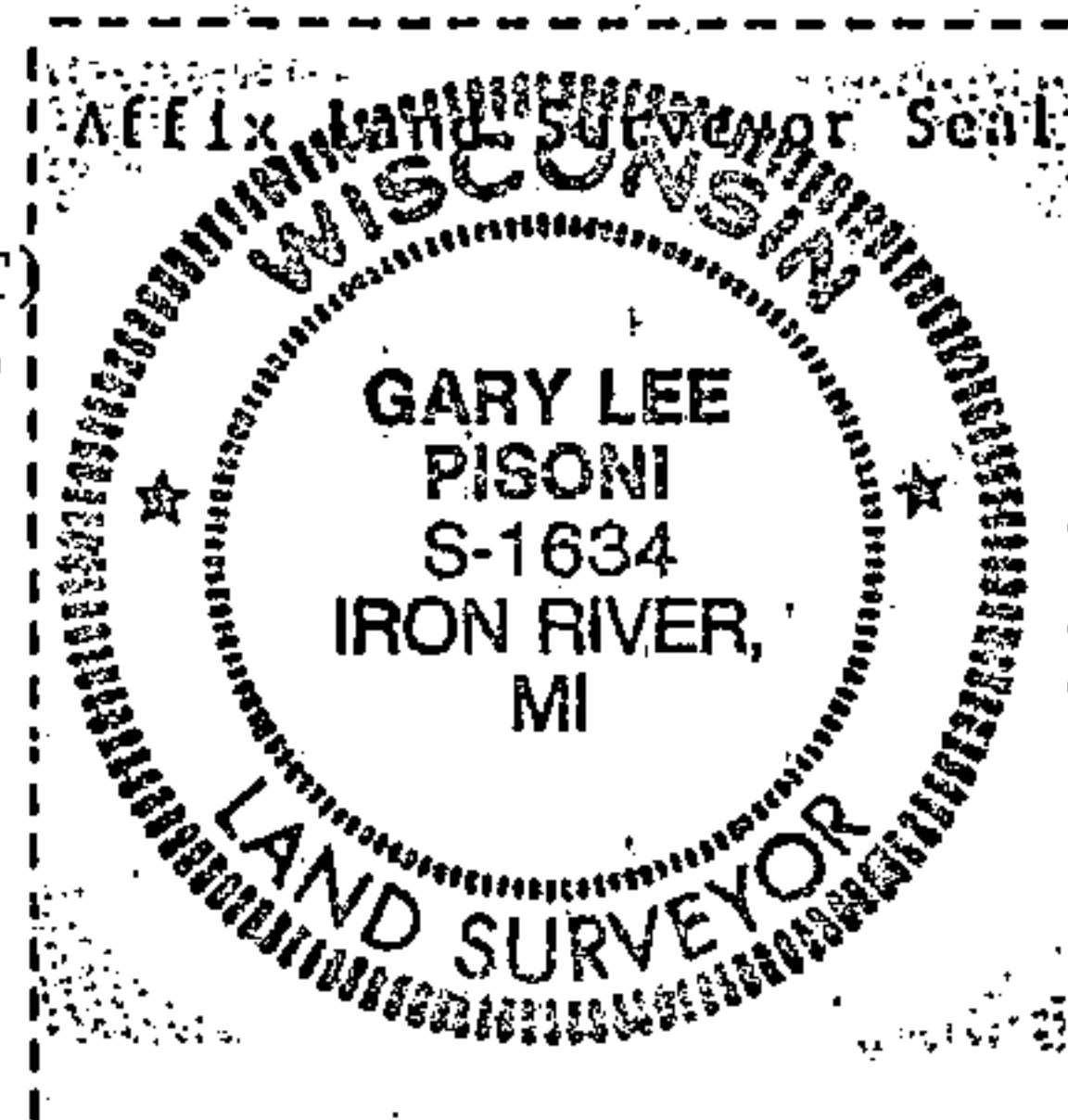
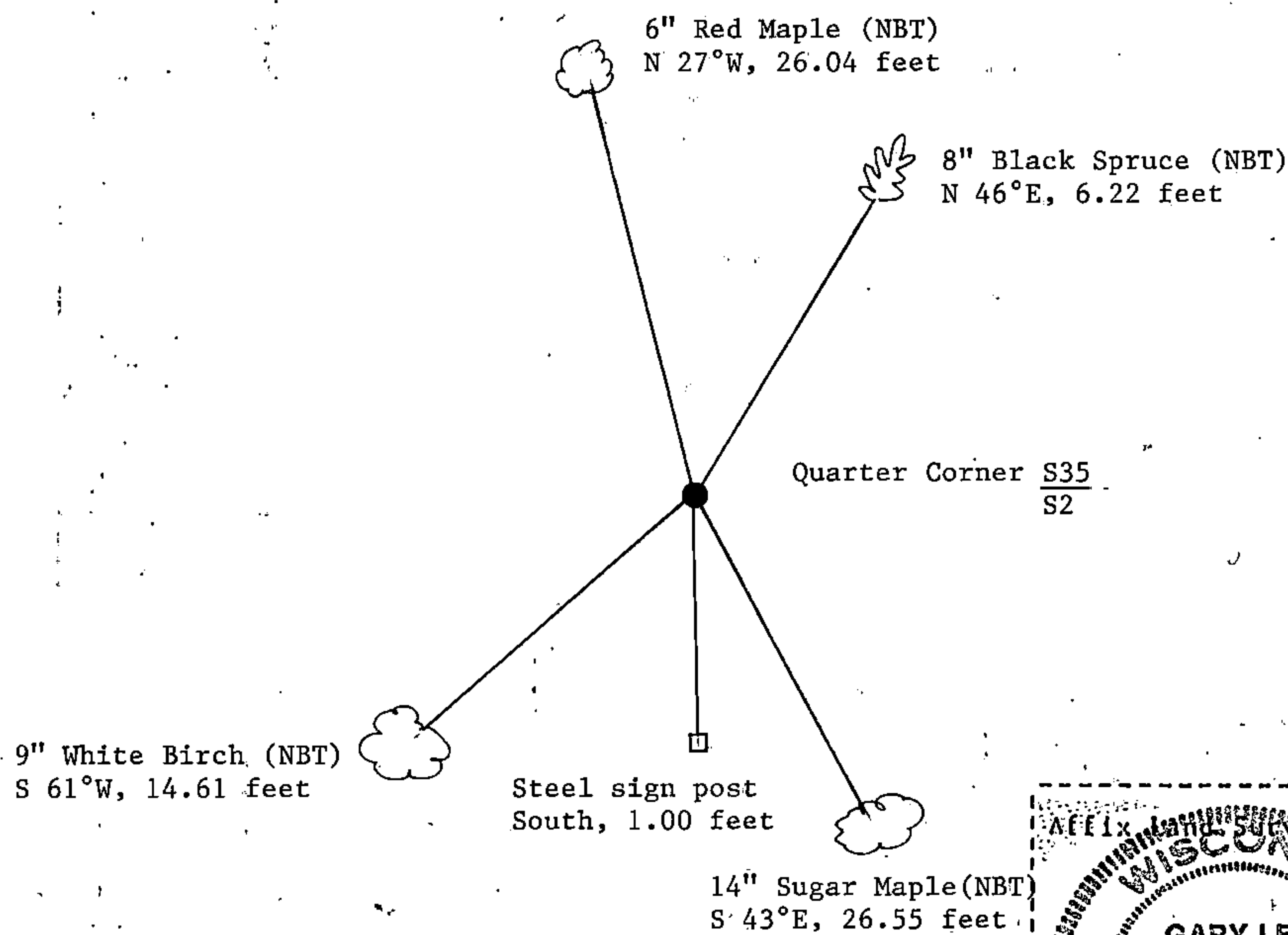
- d) Describe any material discrepancy between the location of the corner as restored or reestablished and the location of that corner as previously restored or reestablished by distance and direction. Show the discrepancy on the plan view drawing under (d), above. Show the distances between the corner as previously restored or reestablished and (1) the corner as restored or reestablished, and (2) to at least 2 of the witness monuments shown on the drawing in (d), above.

None

- (f) Was the corner restored through acceptance of (1) an obliterated evidence location, or, (2) a found perpetuated location?

Restored through acceptance of a found perpetuated location.

- (gkh) Was the corner reestablished through lost corner proportionate methods? If so, show the method, including the directions and distances to other public land survey corners used as evidence or used for proportioning in determining the corner location?



- (i) 1. Gary L. Pisoni
(Type or print name) certify that the corner location shown on this record was determined by me or under my direction and control and that this U.S. Public Land Survey Monument Record is correct and complete to the best of my knowledge and belief.

Signature

Harry L. Ferson

Date _____

11-17-95

Survey requested by:

District Ranger

Date _____