

CERTIFIED LAND CORNER RESTORATION

Index No. **A 21**

State of Wisconsin }
County of Forest } ss.

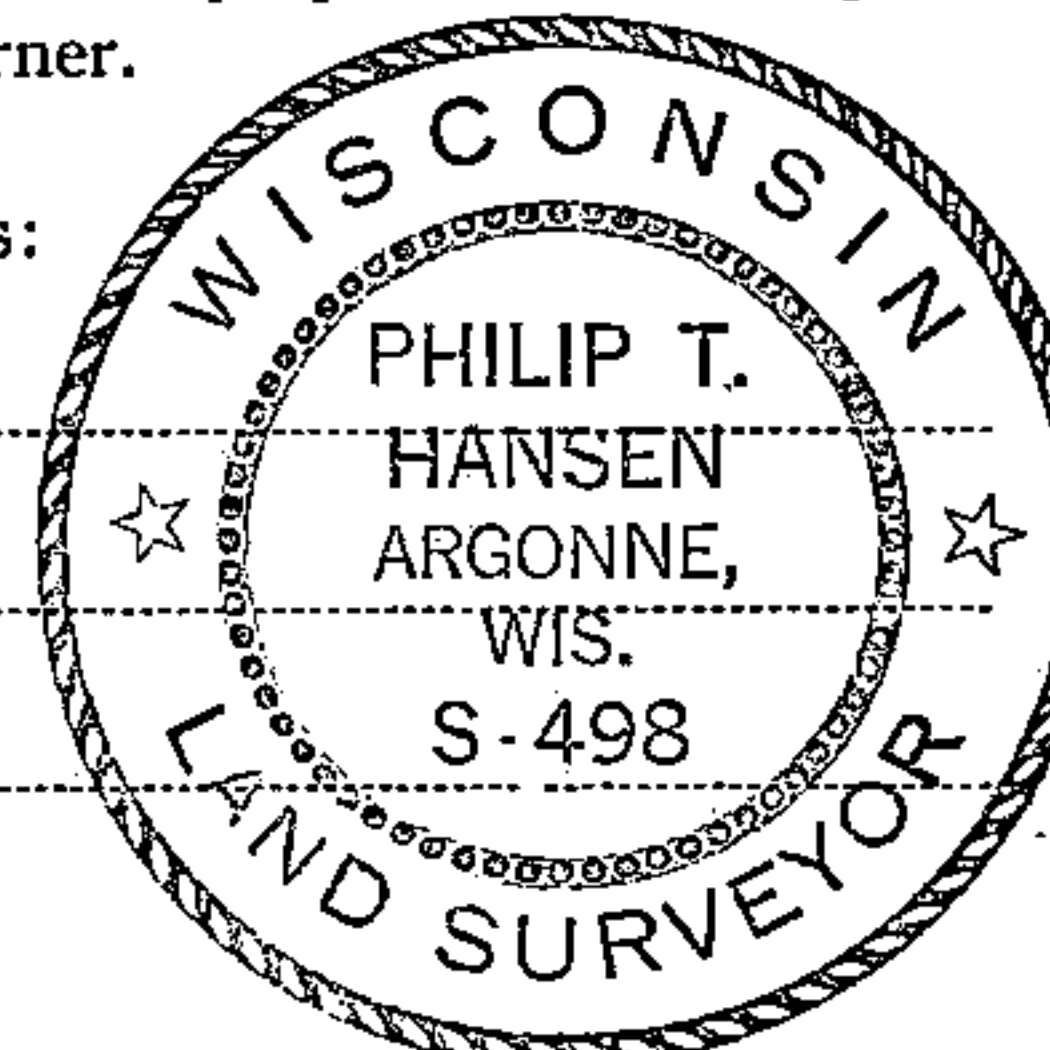
I, Philip T. Hansen, do hereby
certify that on the 16th day
of December, 1975, I found
evidence of the Section
corner of S35, 36, 2, and 1
Township 37 and 36, North, Range
15 East, Fourth Principal Meridian,
as described hereon; and that from this evidence
I established a new monument and accessories
as described hereon to perpetuate the original
location of this corner.

Resident witnesses:

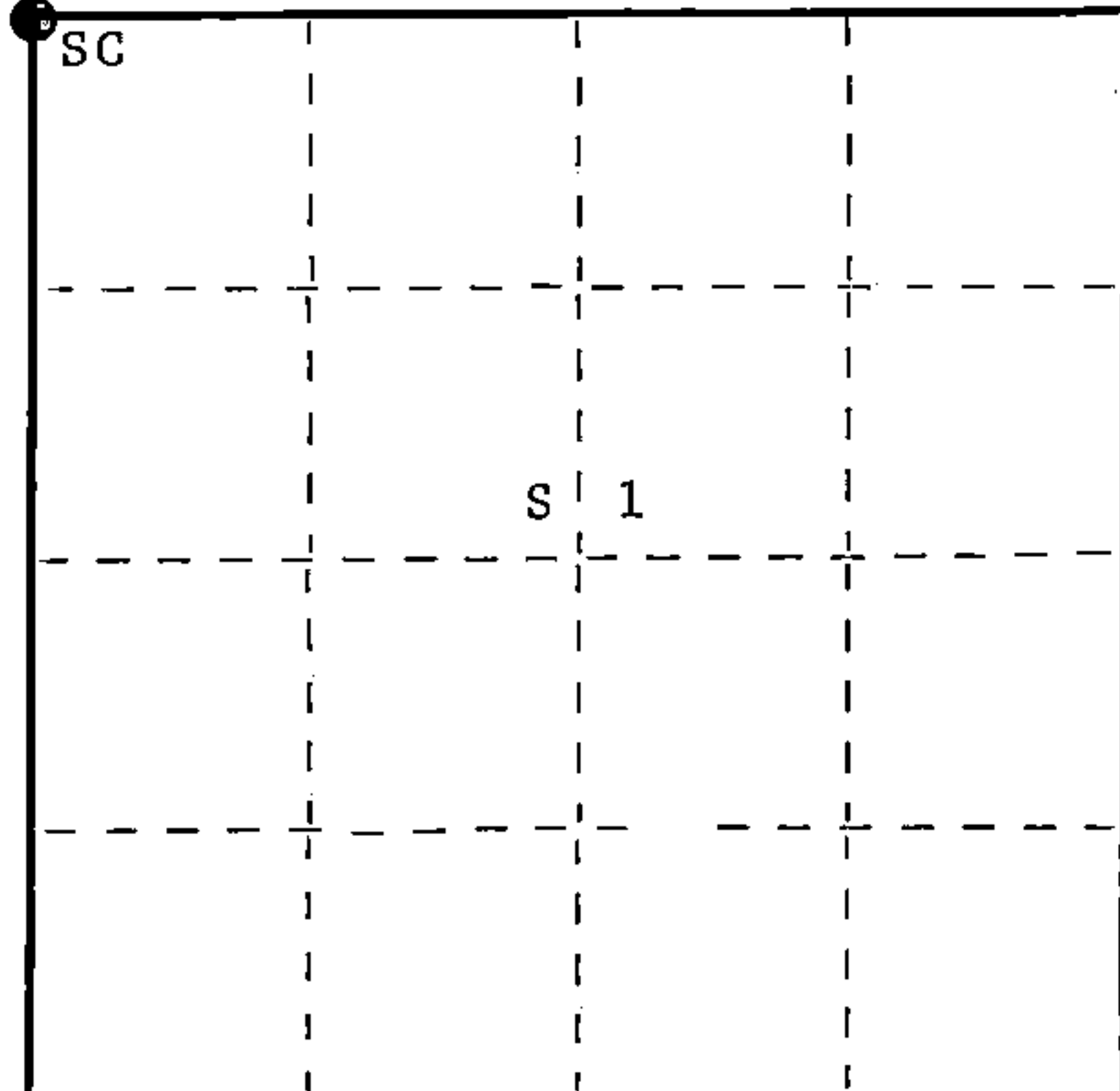
Glen Barker

Jim Claflin

Tom Jewell



T36N R15E



○ = Corner monument restored.

History of original corner establishment: Original corner established by A. Curtiss, Deputy Surveyor, in 1857, from which hemlock 10" bears N76°W 27 links, hemlock 16" bears N53°E 41 links, yellow birch 16" bears S61°E 59 links, and yellow birch 6" bears S34°W 26 links. Corner recovered and restored by Ray Leigh, Consolidated Forester, in 1940's. Corner found by USGS - 1939.

Description of corner evidence found: Recovered 4" squared cedar post in poor condition. No evidence of any BT's visible.

Description of monument and accessories I established to perpetuate the original location of this corner. Replaced 4" squared cedar post with 2½" Berntsen A-1 Federal Monument, aluminum, with magnet installed in cap and base. Pipe projects 18" above ground. Cap stamped -

NBT's - W. birch 12" S26°W 66.1 links, scribed SC BT.
W. birch 10" S24°E 28.7 links, scribed SC BT.
W. spruce 8" N29°E 72 links, scribed SC BT.

S498
T37N R15E
Sec. 35 | 36
2 | 1
T36N R15E
1975

Dated at Argonne, Wis., this 22nd day of December, 1975

Signature Philip T. Hansen Title Registered Land Surveyor Registration No. S-498
(County Surveyor, Registered Land Surveyor, or other duly authorized official)

Office of Register of Deeds, County of Forest, I hereby certify that the within instrument was filed in this office for record on the 5th day of January, 1976 at 2:45 o'clock P. M.

EUGENE STATEZNY

(Register of Deeds)

DOCUMENT NUMBER **108488**

By Eileen Schmidt Deputy

FORM 985 H. C. MILLER CO., MILWAUKEE

43715350000



Stock No. 26273

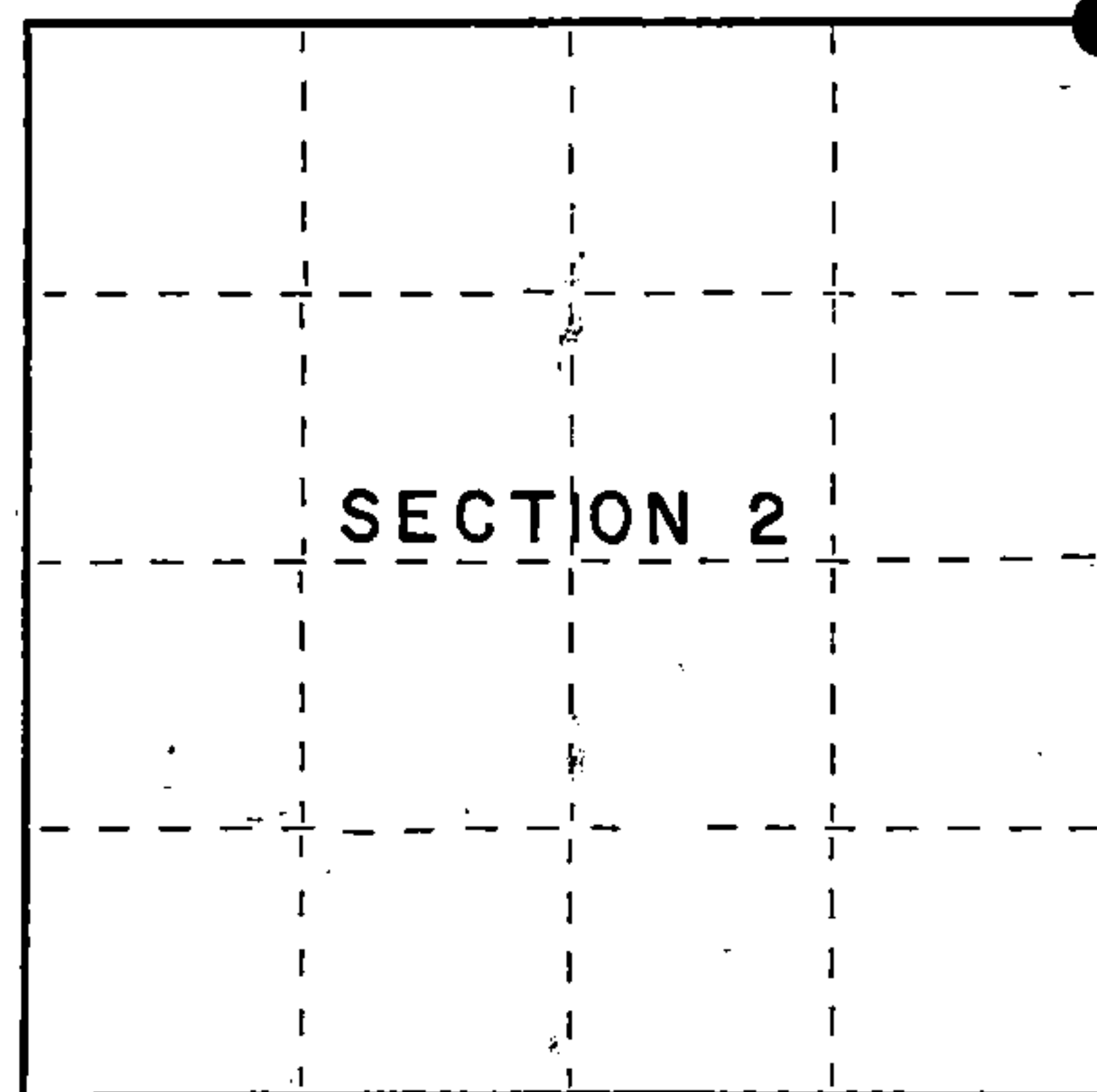
158106

State of Wisconsin

County of Forest } ss.

I, Gary L. Pisoni, do hereby
 certify that on the 10th day
 of May, 1994, I found
 evidence of the Northeast Section
 corner of Section 2
Township 36-, North, Range
15 East, Fourth Principal Meridian,
 as described hereon; and that from this evidence
 I established a new monument and accessories
 as described hereon to perpetuate the original
 location of this corner.

Resident witnesses:



● = Corner monument, restored.

CERTIFIED LAND CORNER RESTORATION

Index No. A-21

History of original corner establishment:

Original Government Survey in 1857 by Artemas Curtis.

West between Sections 36 and 1, at 80.00 chains, set Section corner post
 to Sections 1, 2, 35 and 36 from which the following bear: "Aspen, 8", N 55°W, 6 lks;
 Aspen, 10", N 22°E, 31 lks; Aspen, 18", S 28°E, 47 lks; Aspen, 14", S 52°W, 30 lks.

Corner found by USGS in 1939. In 1940's, corner recovered and restored by Ray Leigh,
 Consolidated Forester. On 7/13/72, Jean Resvick, RLS, with the USFS found a 4"x4" squared
 post marking corner position. In 1975, Philip Hansen, RLS, recovered a 4" squared post and
 replaced post with a 2½" dia. Bernstein A-1 Federal Monument with an aluminum cap and scribed

Description of corner evidence found: the following BTs: W.Birch 12" S 26°W 66.1 lks
 W.Birch 10" S 24°E 28.7 lks
 W.Spruce 8" N 29°E 72. lks

Found monument as described above and the following bearing trees:

White Birch	14"	S 26°W	44.00 feet
White Birch	12"	S 27°E	18.94 feet
White Spruce	9"	N 29°E	47.52 feet

Description of monument and accessories I established to perpetuate the original location of this corner.

Blazed and scribed the following new bearing trees (measurements are taken to a nail
 in side of tree):

Red Maple	6"	N 36°W	37.53 feet
Steel sign post		West	1.0 feet

Dated at Iron River, MI, this 8th day of April, 1995.

Signature Gary L. Pisoni Title Land Surveyor Registration No S-1634
 (County Surveyor, Registered Land Surveyor, or other duly authorized official)

Office of Register of Deeds, County of Forest, I hereby certify that the within
 instrument was filed in this office for record on the 10th day of March, 1997
 at 1:30 o'clock P M.

(Register of Deeds)

By Paul Tomlinson Deputy

43715350000

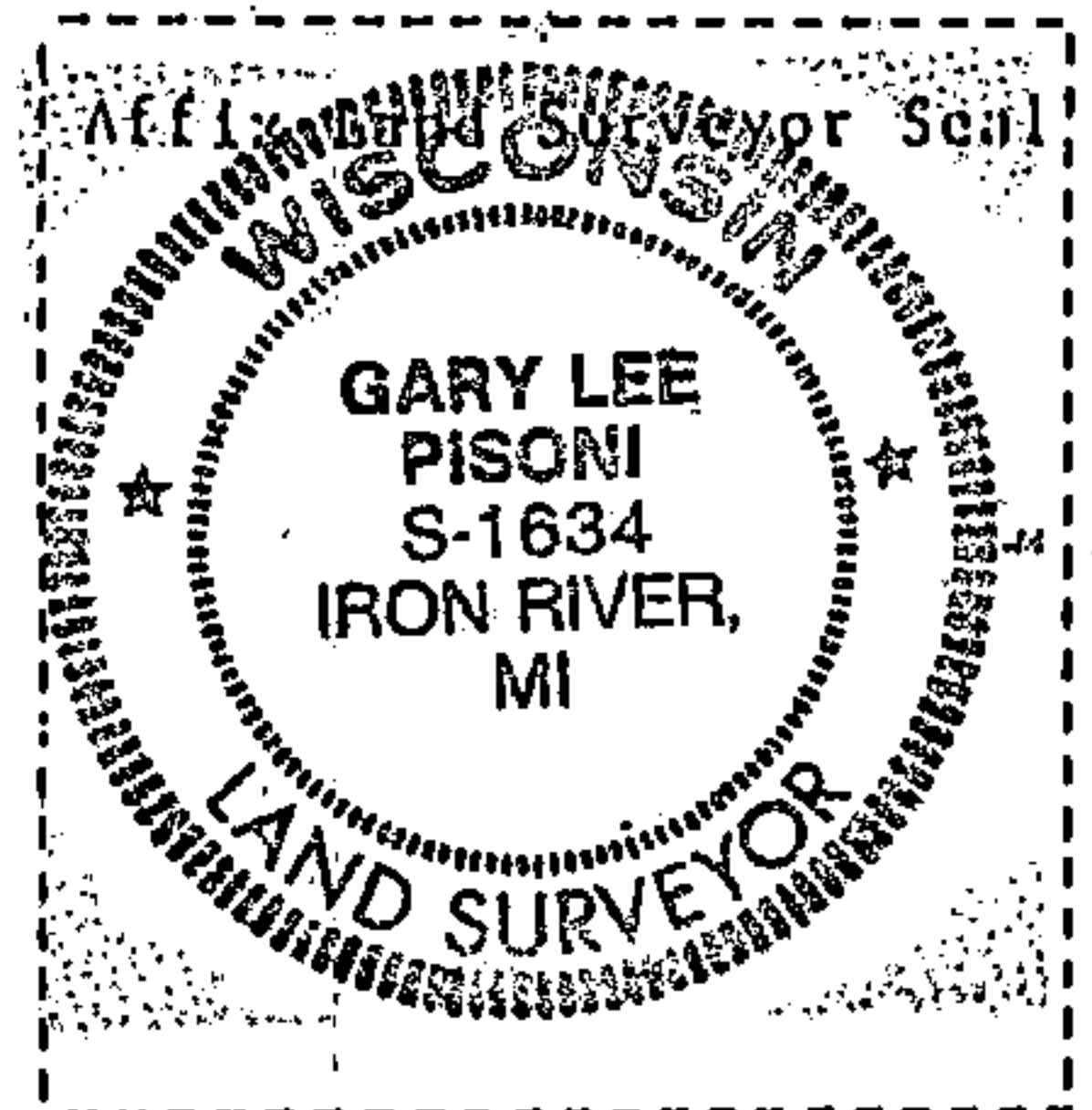
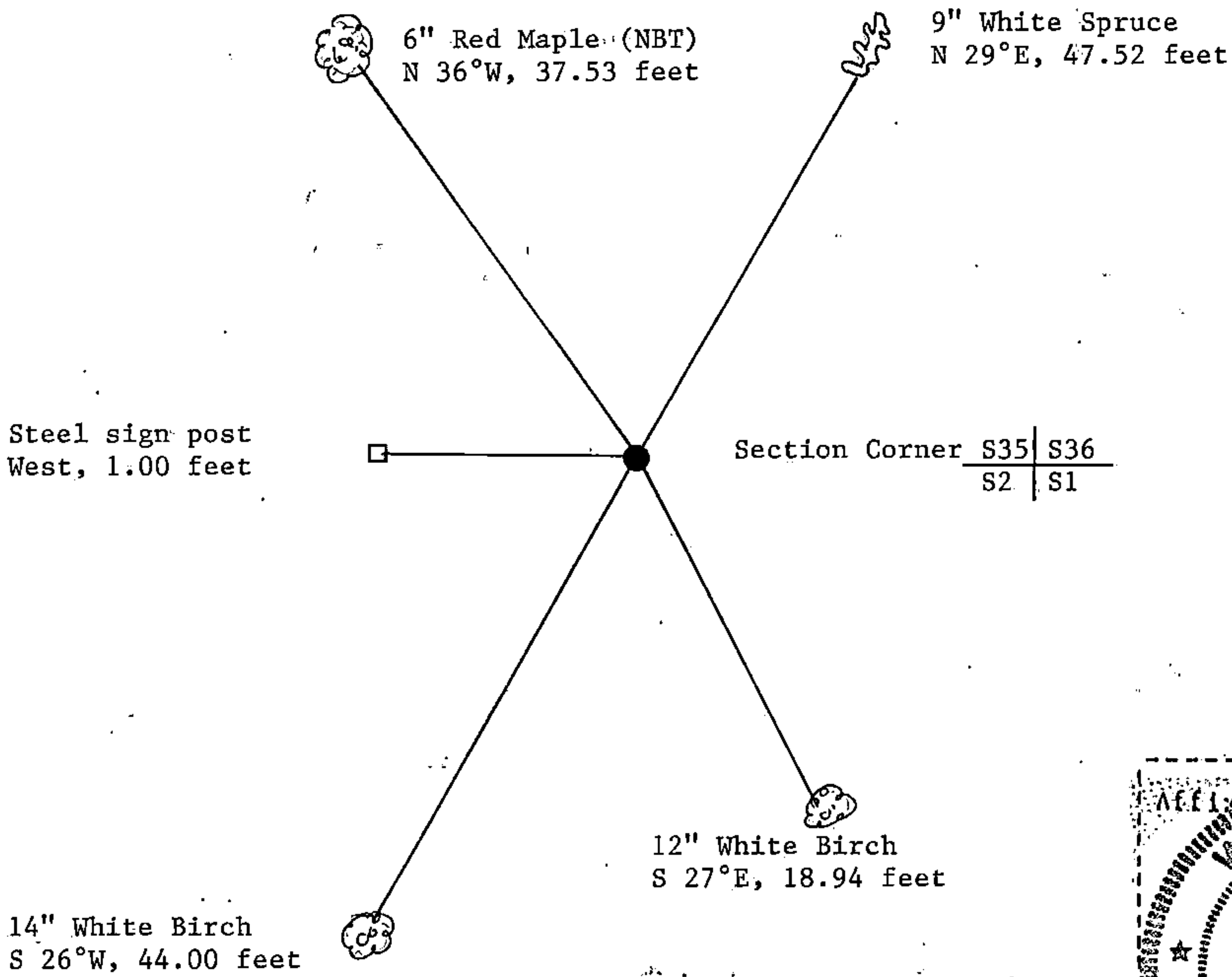
(d) Describe any material discrepancy between the location of the corner as restored or reestablished and the location of that corner as previously restored or reestablished by distance and direction. Show the discrepancy on the plan view drawing under (d), above. Show the distances between the corner as previously restored or reestablished and (1) the corner as restored or reestablished, and (2) to at least 2 of the witness monuments shown on the drawing in (d), above.

None

(f) Was the corner restored through acceptance of (1) an obliterated evidence location, or, (2) a found perpetuated location?

Restored through acceptance of a found perpetuated location.

(g/h) Was the corner reestablished through lost corner proportionate methods? If so, show the method, including the directions and distances to other public land survey corners used as evidence or used for proportioning in determining the corner location?



Gary L. Pisoni

(i) I, _____
(type or print name) certify that the corner location shown on this record was determined by me or under my direction and control and that this U.S. Public Land Survey Monument Record is correct and complete to the best of my knowledge and belief.

Signature

Date

Survey requested by: _____

District Ranger

Date