

State of Wisconsin

County of Forest

ss.

U. S. Public Land Survey Monument Record

Index No. Z-11

History of original corner establishment:

Original corner established by A. Curtis, gov. deputy surveyor in 1857 from which a white pine 7" bears N25W 33 links and white pine 10" S17E 30 links.

I, Glen Barker, do hereby certify that on the 19th day of December, 1986, I found evidence of the 1/4 corner of Sections 4 & 33 Township 36 & 37 North, Range 15 East, Fourth Principal Meridian, as described hereon; and that from this evidence I established a new monument and accessories as described hereon to perpetuate the original location of this corner.

Description of corner evidence found:

Re-established 1/4 corner by proportionate measurement. Total distance from section corner 4-5-32-33 T36&37N R15E to section corner 3-4-33-34 T36&37N R15E is 5240.22'. Set 1/4 corner 2620.11' intermediate.

Resident witnesses:

N. Spiess

H. Wagoner

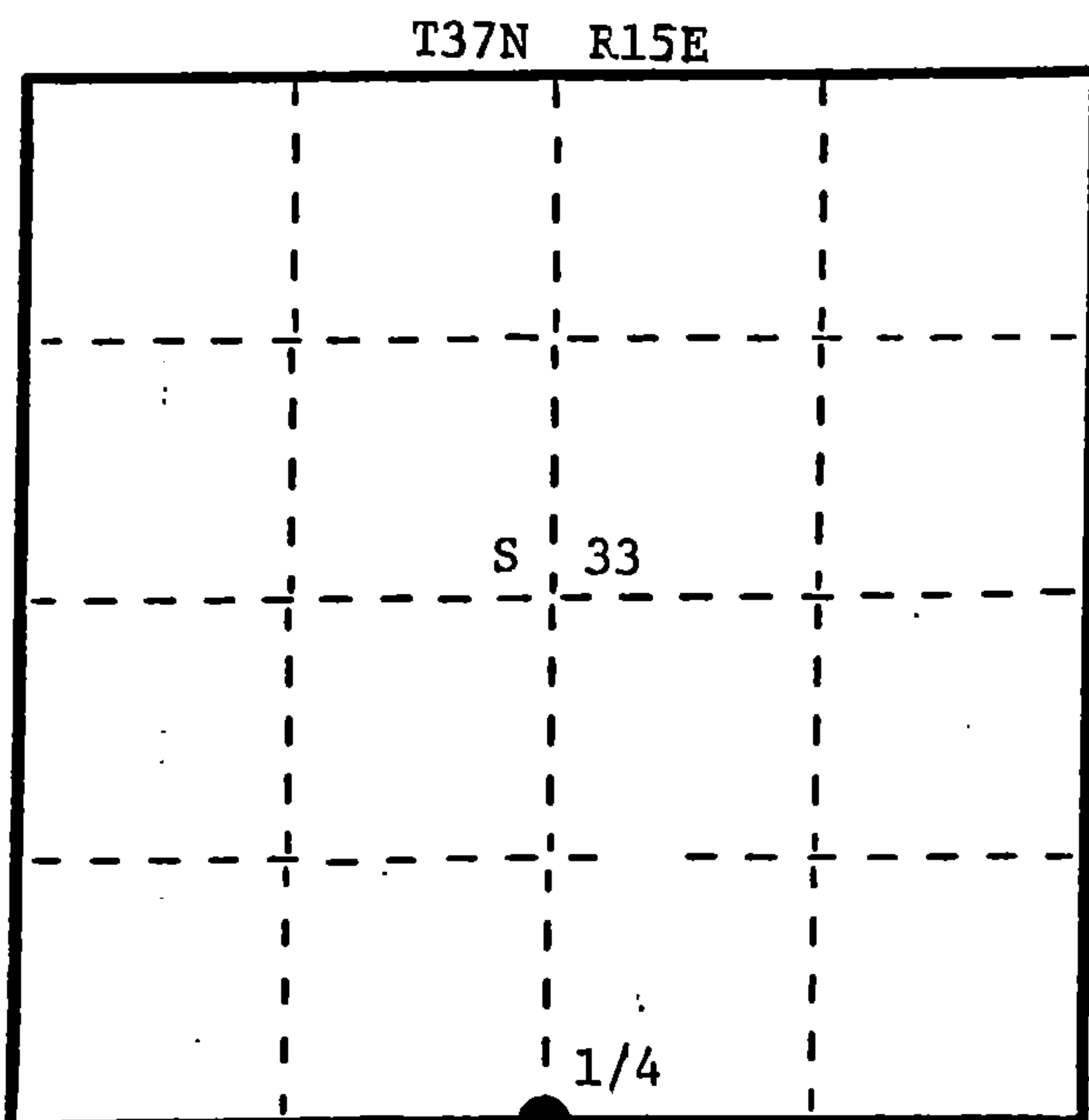
Description of monument and accessories I established to perpetuate the original location of this corner.

Set a 2 1/4" aluminum Forest County monument with 3-1/4" alloy cap, stamped:

Monument projects 3" above ground.

Marked BTs: Red Maple 12" N19E 23.62'
Red Maple 8" S74E 42.27'
Red Maple 6" S70E 17.26'
Red Maple 6" S57W 24.10'

S1682
T37N | S33
T36N | S4 1/4
R15E
1986



● = Corner monument restored.

Dated at Rhinelander, Wis., this 8th day of January, 1987

Signature: Glen Barker, Title: Registered Land Surveyor, Registration No. S1682
(County Surveyor, Registered Land Surveyor, or other duly authorized official)

Office of Register of Deeds, County of Forest, I hereby certify that the within instrument was filed in this office for record on the 19th day of January, 1987 at 1:20 o'clock P.M.

Paul Ackermann (Register of Deeds)

By: Deputy

131942

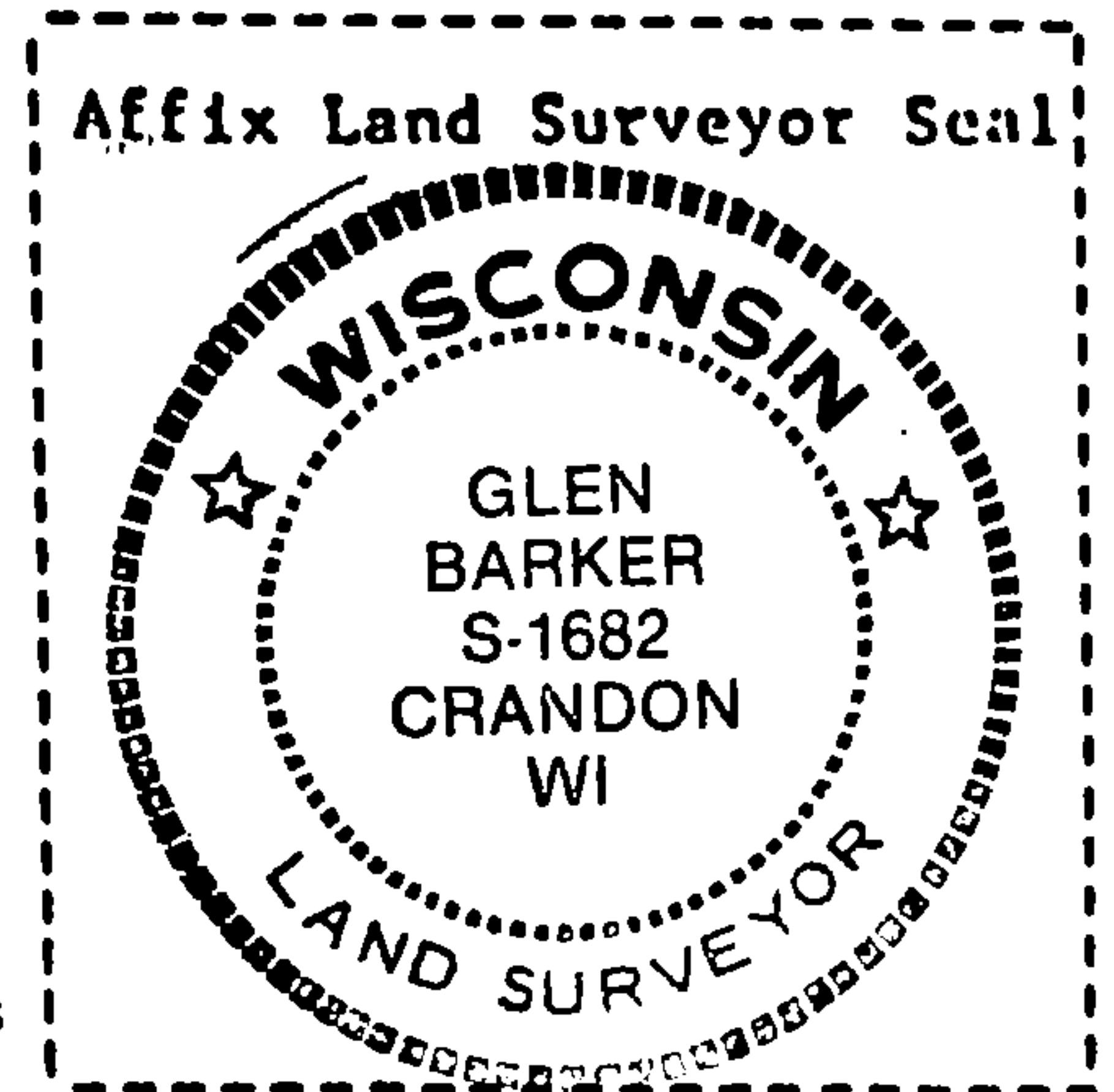
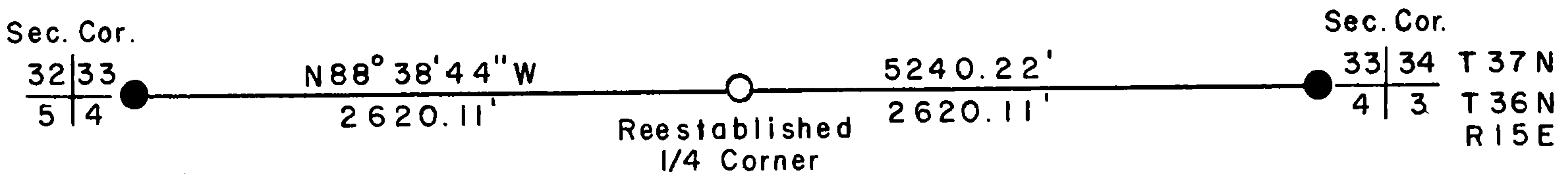
43715330020

Describe any material discrepancy between the location of the corner as restored or reestablished and the location of that corner as previously restored or reestablished by distance and direction. Show the discrepancy on the plan view drawing under (d), above. Show the distances between the corner as previously restored or reestablished and (1) the corner as restored or reestablished, and (2) to at least 2 of the witness monuments shown on the drawing in (d), above.

Was the corner restored through acceptance of (1) an obliterated evidence location, or, (2) a found perpetuated location?

Was the corner reestablished through lost corner proportionate methods? If so, show the method, including the directions and distances to other public land survey corners used as evidence or used for proportioning in determining the corner location?

proportionate method



I, Glen Barker  
 (type or print name) certify that the corner location shown on this record was determined by me or under my direction and control and that this U.S. Public Land Survey Monument Record is correct and complete to the best of my knowledge and belief.

Signature

Date

Glen Barker Jan 8, 1987



U.S. PUBLIC LAND SURVEY MONUMENT RECORD

Index No. Z-11

State of Wisconsin }  
County of Forest } ss.

I, Gary L. Pisoni, do hereby certify that on the 17th day of February, 1993, I found evidence of the South Quarter corner of Section 33 Township 37, North, Range 15 East, Fourth Principal Meridian, as described hereon; and that from this evidence I established a new monument and accessories as described hereon to perpetuate the original location of this corner.

Resident witnesses:

History of original corner establishment:

Original Government Survey in 1857 by Artemas Curtis, deputy surveyor. Set quarter Section post from which the following bear: White Pine 7" N 25° W 33 lks  
White Pine 10" S 17° E 30 lks

In 1986, Glen Barker RLS found no evidence of the corner position and re-established the Quarter corner by proportionate measurement, and set a 2 1/4" aluminum Forest County monument with a 3 1/2" aluminum cap from which the following bear:

Red Maple 12" N 19° E 23.62 feet Red Maple 6" S 07° E 17.26 feet  
Red Maple 8" S 74° E 42.27 feet Red Maple 6" S 57° W 24.10 feet

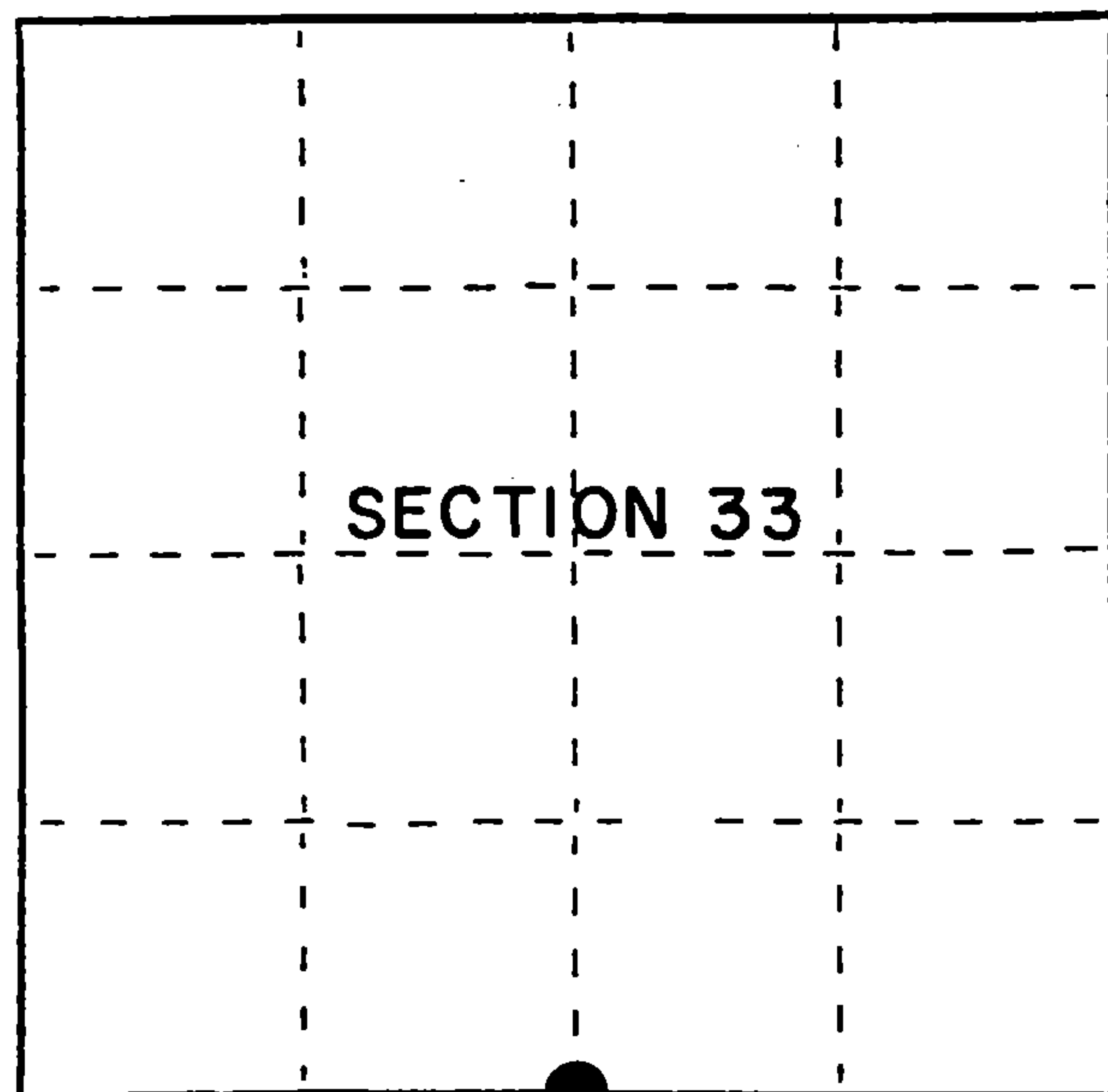
Description of corner evidence found:

Found the monument and bearing trees as described above:

Maple 18" N 20° E 23.60 feet  
Maple 12" S 74° E 42.40 feet  
Maple 10" S 09° E 17.44 feet  
Maple 10" S 54° W 24.09 feet

Description of monument and accessories I established to perpetuate the original location of this corner.

Set a steel sign post S 45° E 1.0 feet



● = Corner monument restored.

Dated at Iron River, MI, Wis., this 13th day of May, 1995

Signature Gary L. Pisoni Title Land Surveyor Registration No. S-1634  
(County Surveyor, Registered Land Surveyor, or other duly authorized official)

Office of Register of Deeds, County of Forest. I hereby certify that the within instrument was filed in this office for record on the 10th day of March, 1997 at 1:30 o'clock P M.

(Register of Deeds)

By [Signature] Deputy

FORM NO. 985-A



Stock No. 26273

158143

H3715 330020

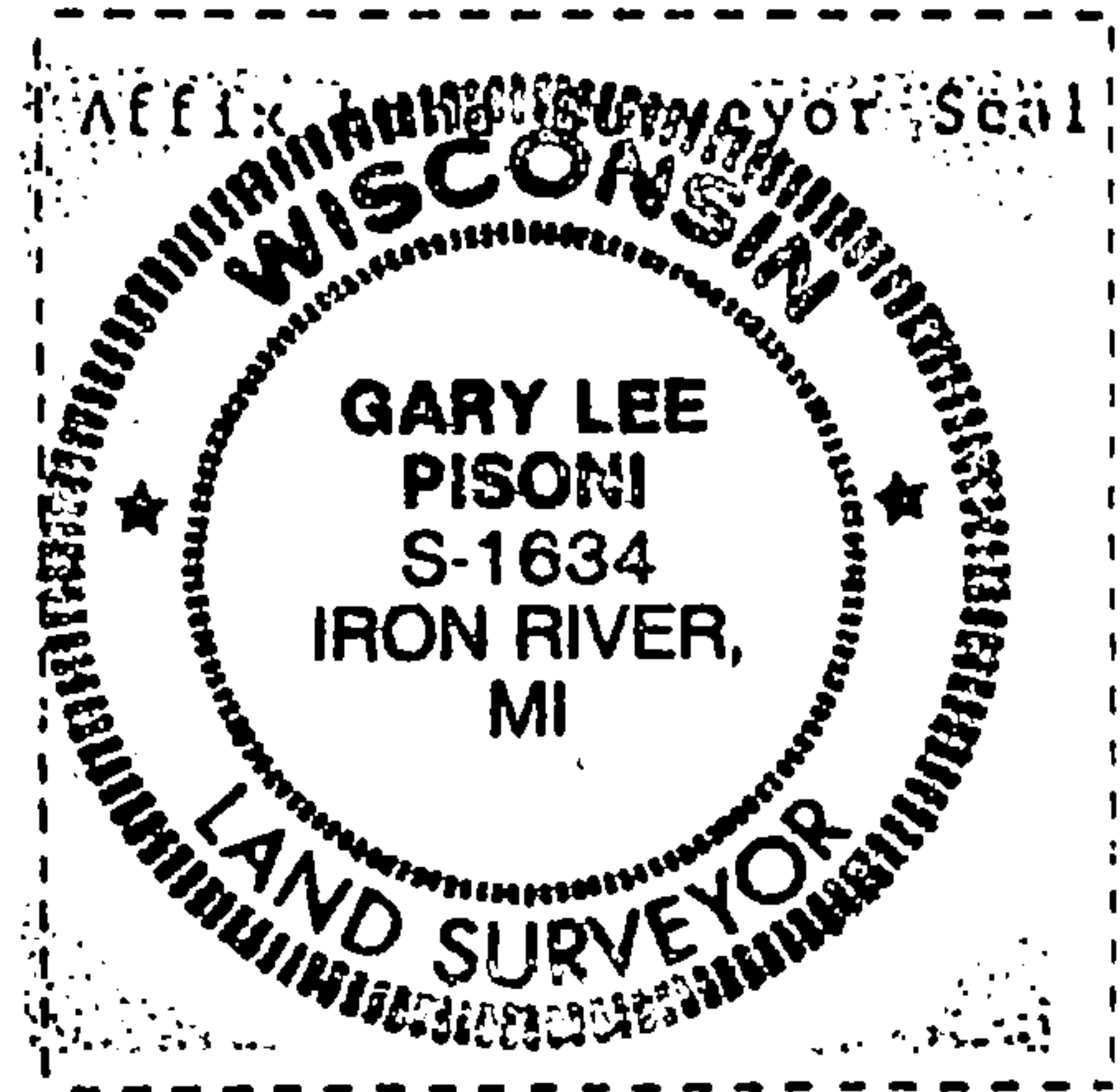
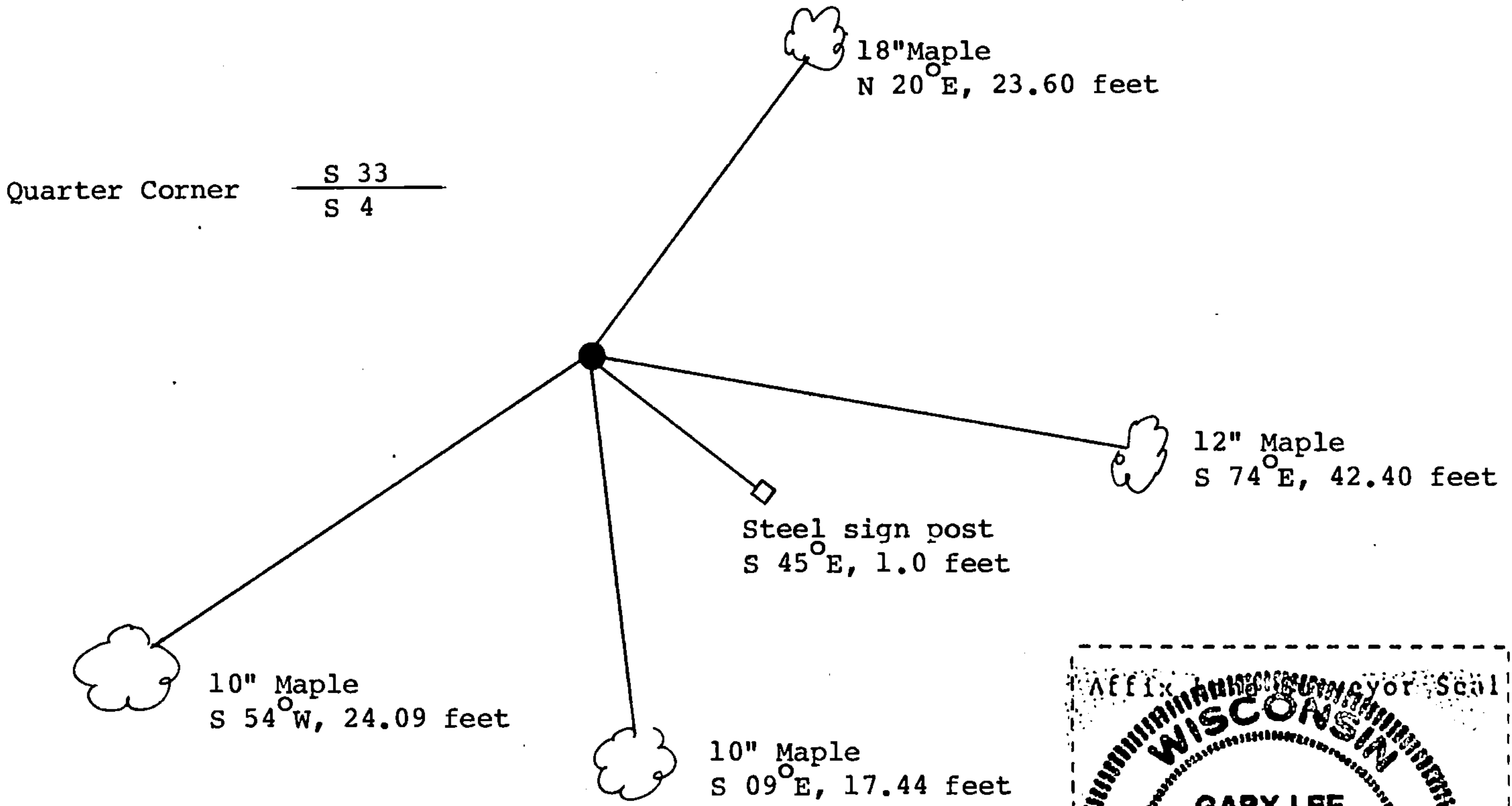
(e) Describe any material discrepancy between the location of the corner as restored or reestablished and the location of that corner as previously restored or reestablished by distance and direction. Show the discrepancy on the plan view drawing under (d), above. Show the distances between the corner as previously restored or reestablished and (1) the corner as restored or reestablished, and (2) to at least 2 of the witness monuments shown on the drawing in (d), above.

None

(f) Was the corner restored through acceptance of (1) an obliterated evidence location, or, (2) a found perpetuated location?

Restored through acceptance of a found perpetuated location.

(g&h) Was the corner reestablished through lost corner proportionate methods? If so, show the method, including the directions and distances to other public land survey corners used as evidence or used for proportioning in determining the corner location?



(i) I, Gary L. Pisoni  
(type or print name) certify that the corner location shown on this record was determined by me or under my direction and control and that this U.S. Public Land Survey Monument Record is correct and complete to the best of my knowledge and belief.

Gary L. Pisoni 5-24-96  
Signature Date