

State of Wisconsin }
 County of Forest } ss.

U. S. Public Land Survey Monument Record

Index No. Z-13

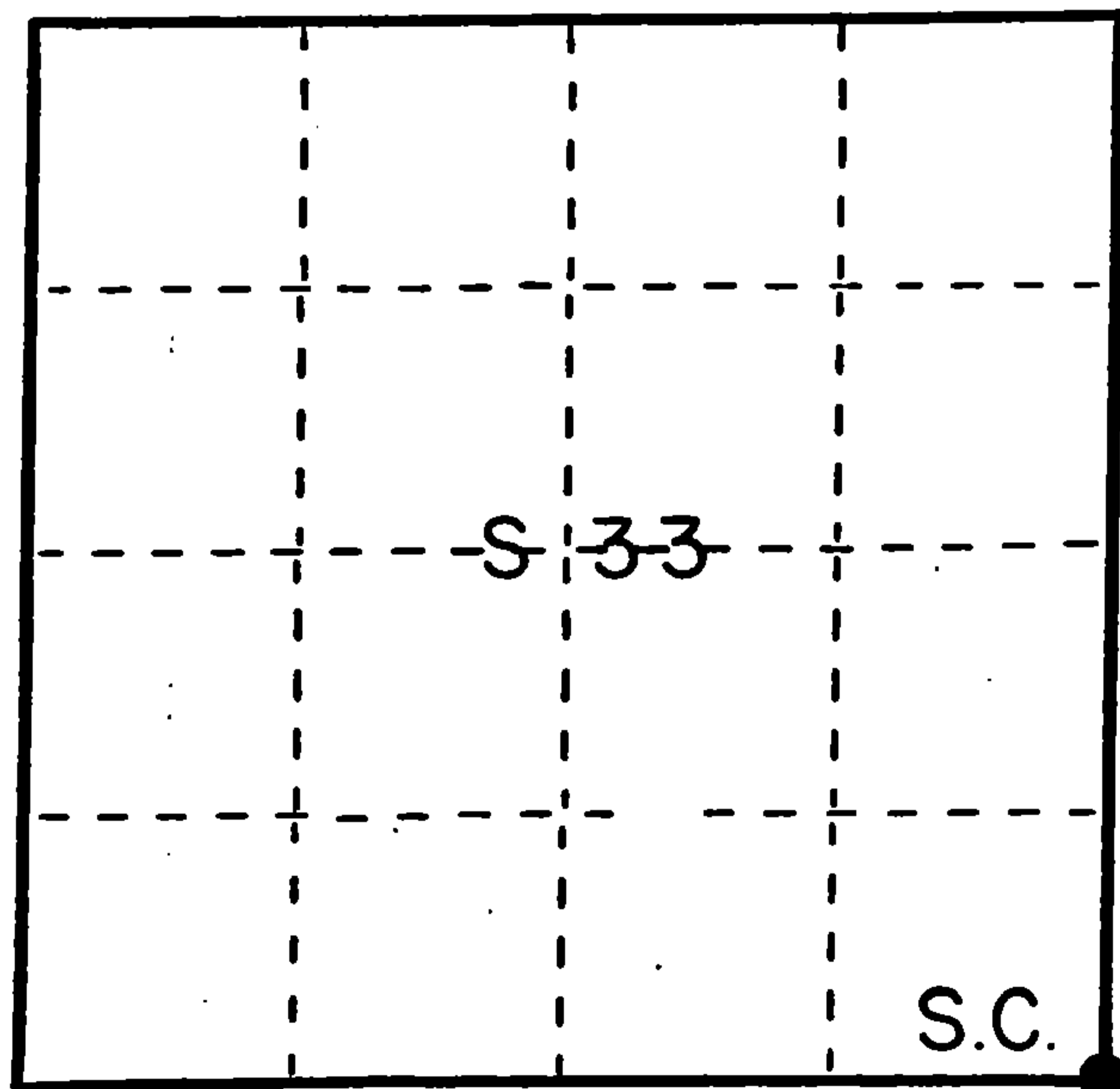
I Glen Barker, do hereby certify that on the 18th day of December, 1986, I found ~~established~~ restored the section corner of Secs. 3-4-33-34 Township 36 & 37, North, Range 15 East, Fourth Principal Meridian, as described hereon; and that from this evidence I established a new monument and accessories as described hereon to perpetuate the original location of this corner.

Resident witnesses:

N. Spiess

H. Wagoner

T. 37 N. R. 15 E.



● = Corner monument restored.

History of original corner establishment:

Original corner established by A. Curtis, government deputy surveyor, in 1857 from which Maple 12" bears N84W 84 links; Elm 6" N8°W 19 links and Elm 20" S54W 84 links.

Description of corner evidence found:

Re-established section corner by proportionate measurement. Corner re-established by single proportion from traverse and computations. From section corner 4-5-32-33 T36&37N R15E to 1/4 corner between sections 3 & 34 T36&37N R15E. Total distance is 7860.33'. Set section corner 3-4-33-34 5240.22' of section corner 4-5-32-33 and 2620.11' of 1/4 corner between sections 3 & 34 on line and proportional to the original distance.

Description of monument and accessories I established to perpetuate the original location of this corner.

True corner position falls in the Peshtigo River. Set a witness corner on the section line 114.0' west of true position.

Set a 2 1/4" aluminum Forest County monument with 3 1/4" alloy cap for witness corner 114.0' west of true corner position. Monument projects 4" above ground.

Marked BTs: to W.C.	Hemlock 10" N40W 24.22'	Cap stamped:
	Y. Birch 14" N14E 25.94'	T37N R15E
	Silver Maple 14" N66E 23.80'	S88-38-44E
	Hemlock 8" S40W 47.73'	W.S33 S34 C.
		S4 S3
		114.0 ft.
		T36N R15E

W.C. sets 107.0' + to river's edge, all river bottom & flood plane. S1682 - 1986

Dated at Rhineland, Wis., this 12th day of Jan., 1987.

Signature Glen Barker Title Registered Land Surveyor Registration No. S1682
 (County Surveyor, Registered Land Surveyor, or other duly authorized official)

Office of Register of Deeds, County of Forest, I hereby certify that the within instrument was filed in this office for record on the 19th day of January, 1987 at 1:20 o'clock P. M.

Paul Aschenbrenner
 (Register of Deeds)

By _____ Deputy

131943

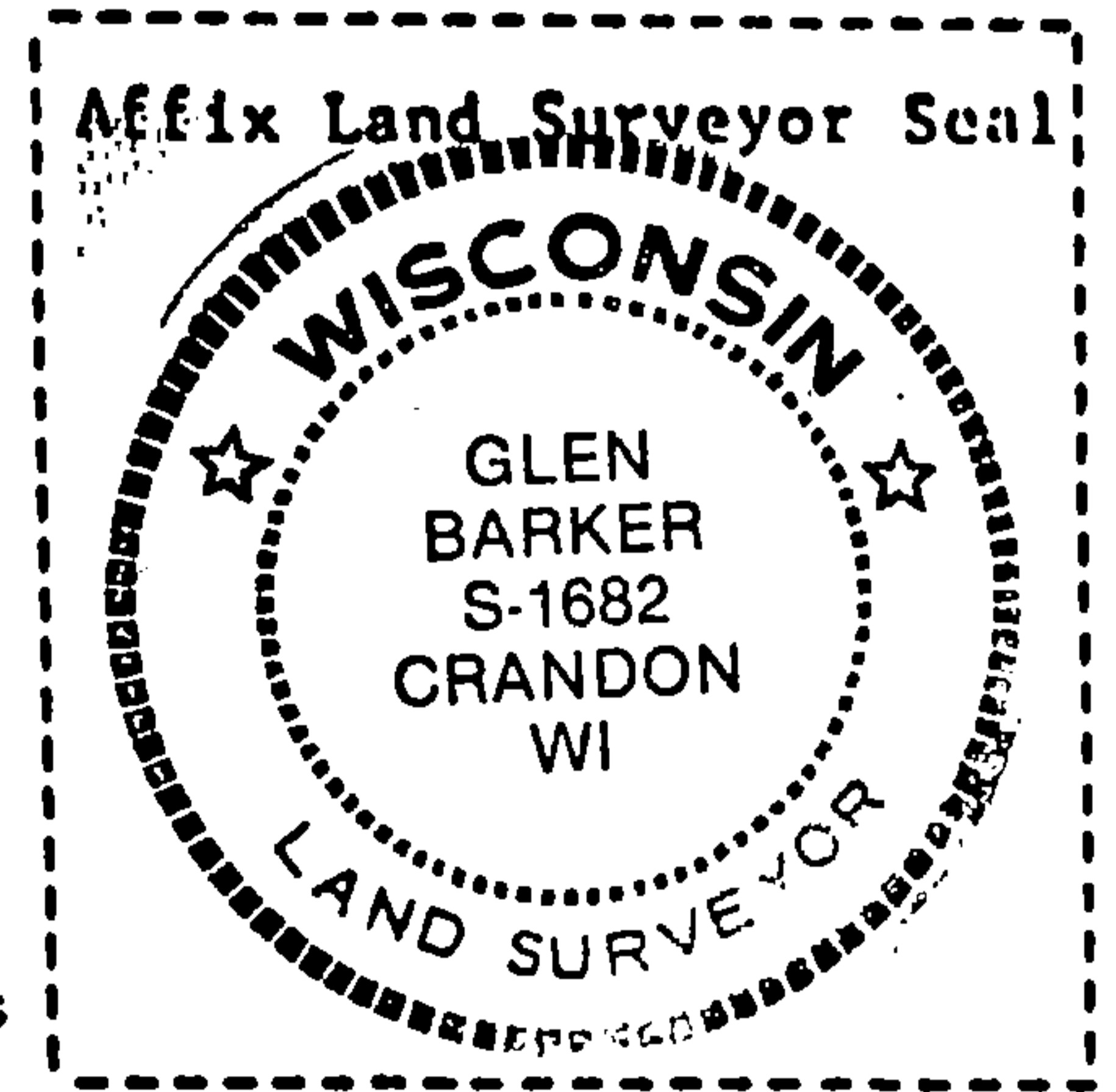
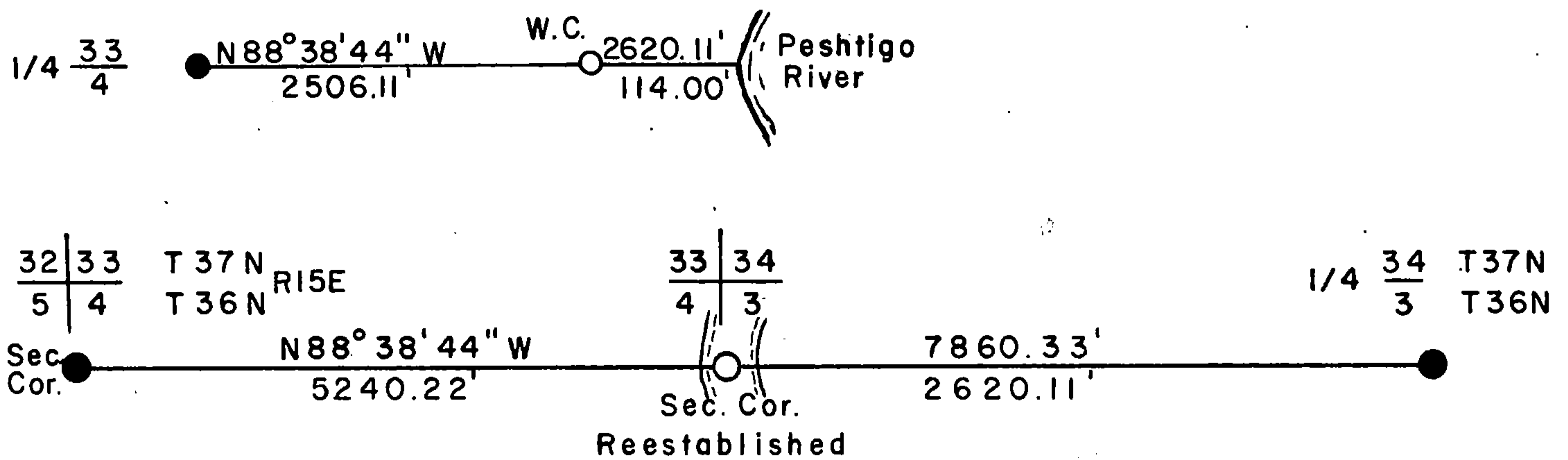
4371533000

Describe any material discrepancy between the location of the corner as restored or reestablished and the location of that corner as previously restored or reestablished by distance and direction. Show the discrepancy on the plan view drawing under (d), above. Show the distances between the corner as previously restored or reestablished and (1) the corner as restored or reestablished, and (2) to at least 2 of the witness monuments shown on the drawing in (d), above.

Was the corner restored through acceptance of (1) an obliterated evidence location, or, (2) a found perpetuated location?

Was the corner reestablished through lost corner proportionate methods? If so, show the method, including the directions and distances to other public land survey corners used as evidence or used for proportioning in determining the corner location?

proportionate method



Glen Barker

I, Glen Barker (type or print name) certify that the corner location shown on this record was determined by me or under my direction and control and that this U.S. Public Land Survey Monument Record is correct and complete to the best of my knowledge and belief.

Signature

Date

Glen Barker

Apr 8, 1987

U.S. PUBLIC LAND SURVEY MONUMENT RECORD

Index No. Z-13

State of Wisconsin }
County of Forest } ss.

I, Gary L. Pisoni, do hereby certify that on the 17th day of February, 1993, I found evidence of the Southeast Section corner of Section 33 Township -37, North, Range 15 East, Fourth Principal Meridian, as described hereon; and that from this evidence I established a new monument and accessories as described hereon to perpetuate the original location of this corner.

Resident witnesses:

History of original corner establishment:

Original Government Survey in 1857 by Artemas Curtis, deputy surveyor. Set Section corner post from which the following bear:
Maple 12" N 84° W 84 lks
Elm 6" N 08° W 19 lks
Elm 20" S 54° W 84 lks

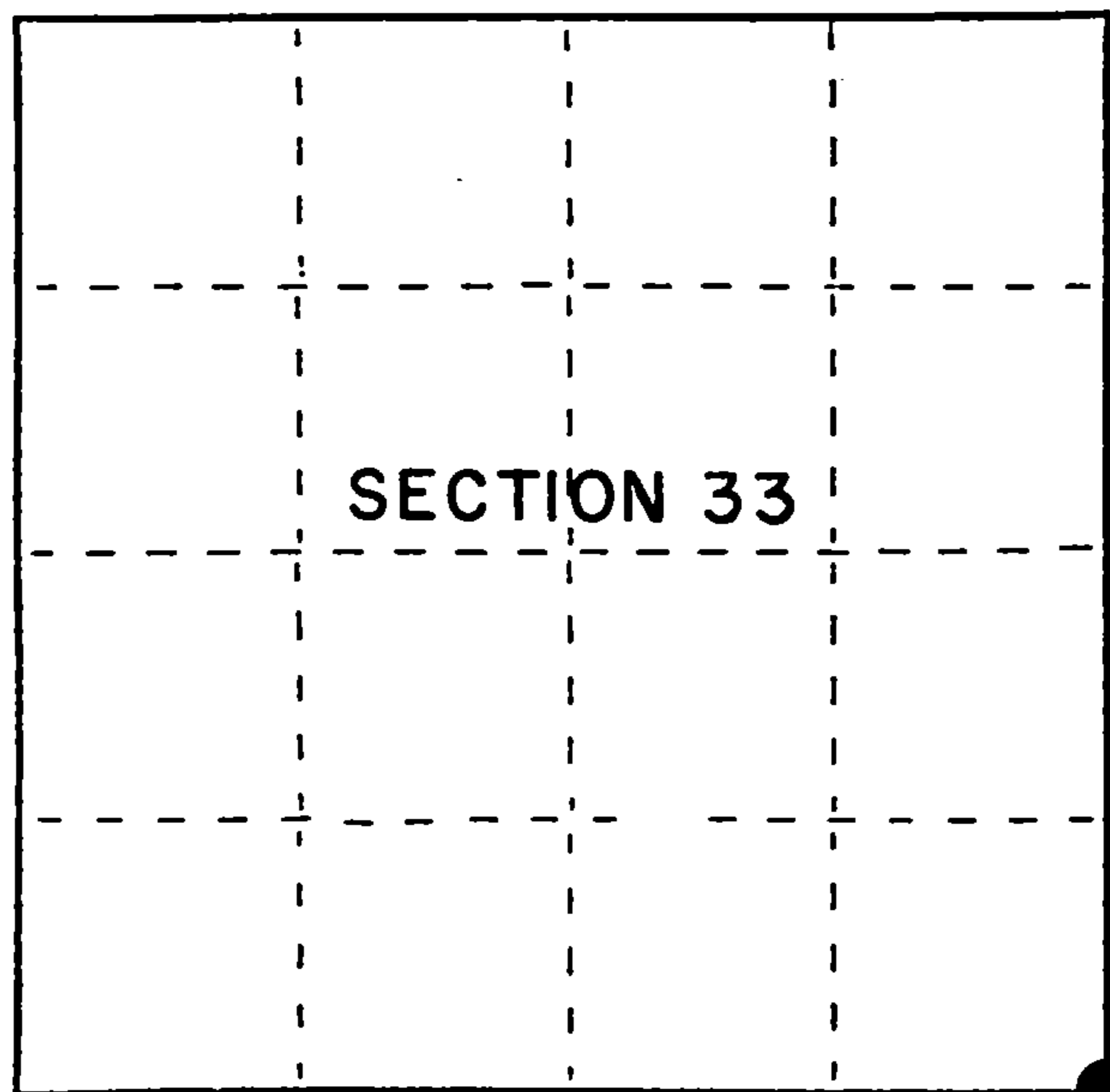
In 1986, Glen Barker RLS found no evidence of the corner position and re-established the Section corner by single proportionate measurements, and set a 2 1/2" aluminum Forest County monument with a 3 1/2" aluminum cap as a witness corner on the Section line which is 114.0' West of the true corner position which falls in the Peshtigo River; from which the following bear: (said B.T.s are for the witness corner)
Hemlock 10" N 40° W 24.22 feet
Description of corner evidence found:
Yellow Birch 14" N 14° E 25.94 feet
Silver Maple 14" N 66° E 23.80 feet
Hemlock 8" S 40° W 47.73 feet

Found the monument and bearing trees as described above:

Hemlock 11" N 40° W 24.45 feet
Yellow Birch 16" N 14° E 26.02 feet
Silver Maple 18" N 66° E 23.33 feet
Hemlock 9" S 40° W 47.75 feet

Description of monument and accessories I established to perpetuate the original location of this corner.

Set a steel sign post Southeast 0.80 feet



● = Corner monument restored.

Dated at Iron River, MI, Wis., this 13th day of May, 1995

Signature Gary L. Pisoni Title Land Surveyor Registration No. S-1634
(County Surveyor, Registered Land Surveyor, or other duly authorized official)

Office of Register of Deeds, County of Forest, I hereby certify that the within instrument was filed in this office for record on the 20th day of March, 1997 at 1:30 o'clock P.M.

(Register of Deeds)

By [Signature] Deputy

FORM NO. 985-A



Stock No. 26273

158144

1571523000

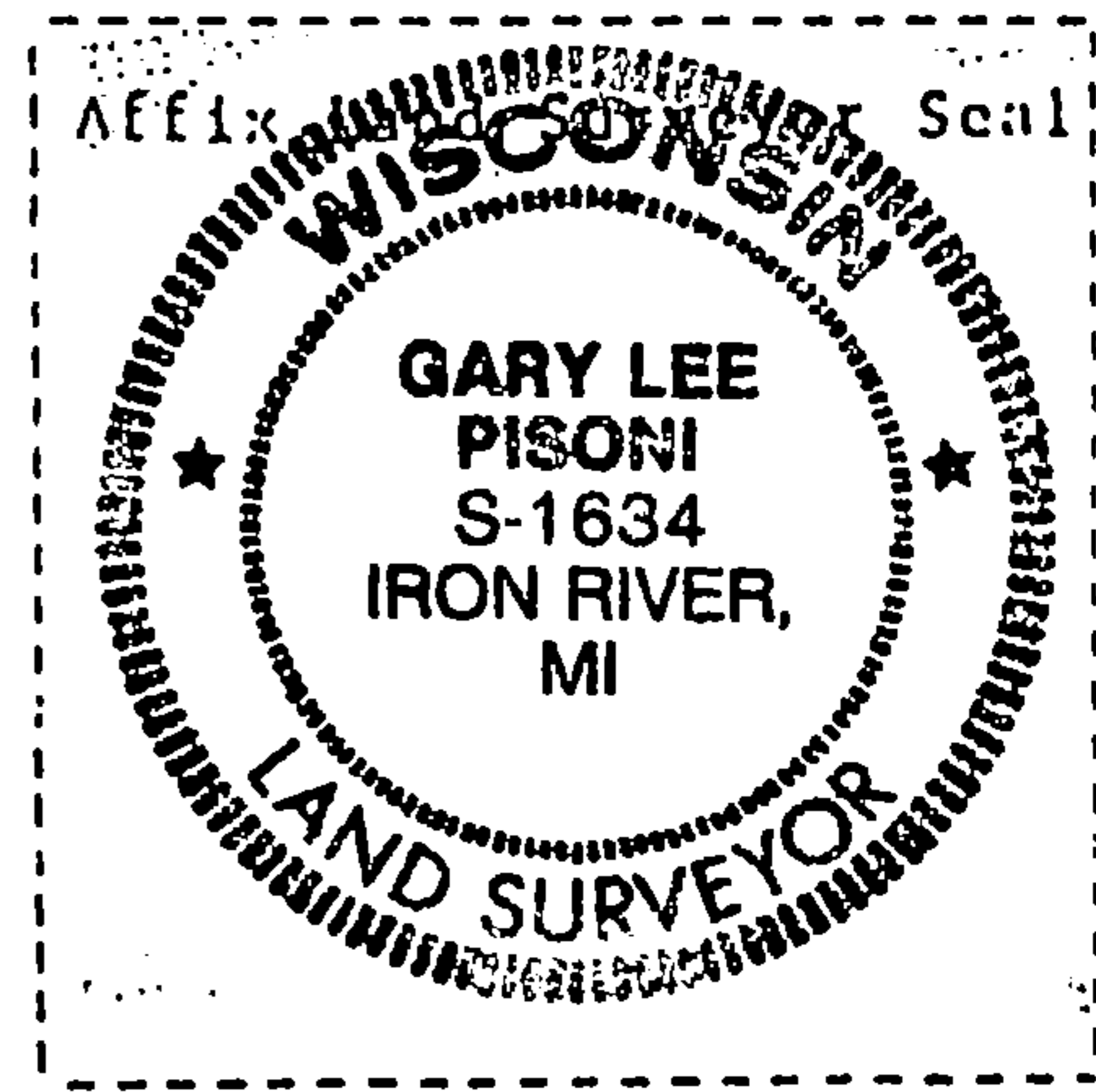
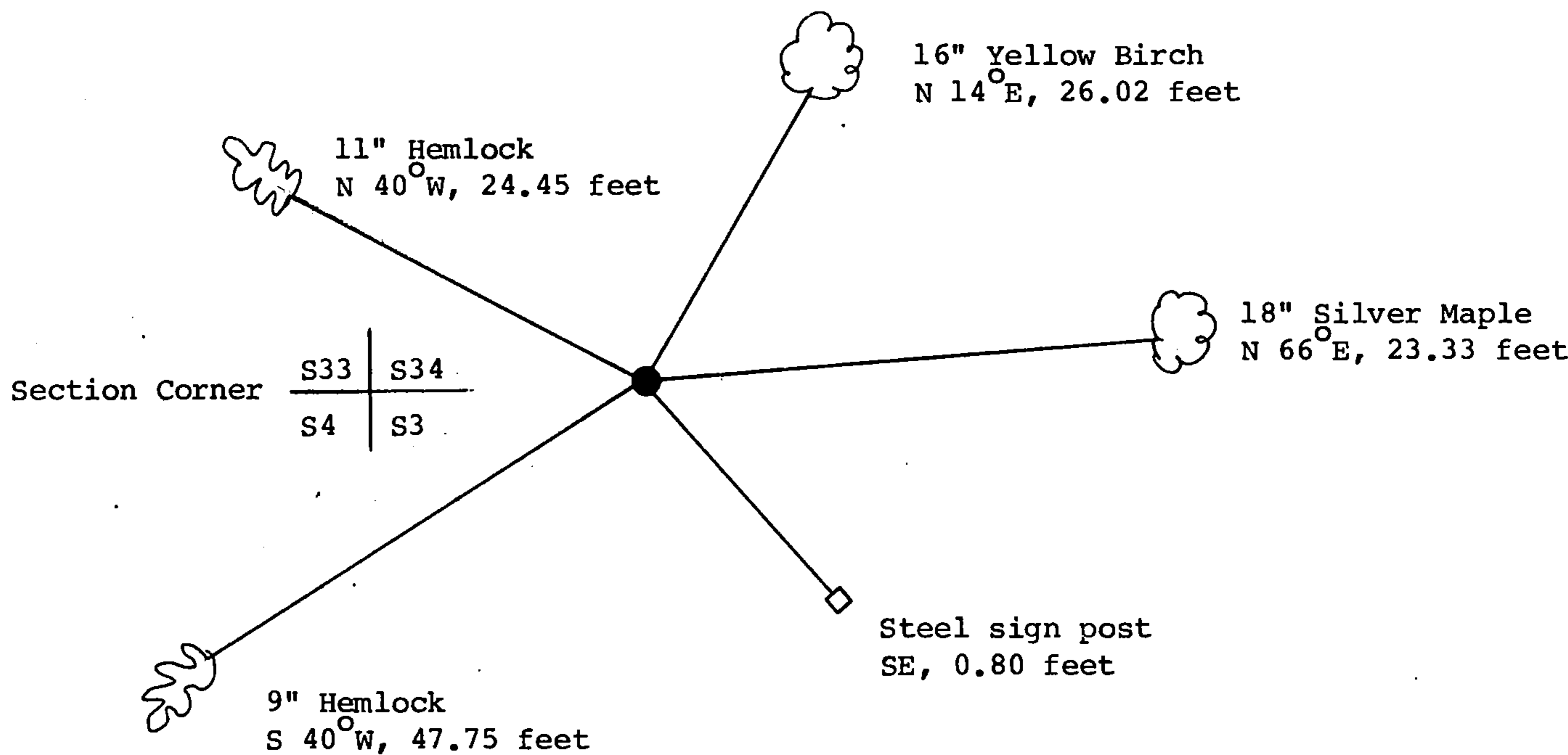
e) Describe any material discrepancy between the location of the corner as restored or reestablished and the location of that corner as previously restored or reestablished by distance and direction. Show the discrepancy on the plan view drawing under (d), above. Show the distances between the corner as previously restored or reestablished and (1) the corner as restored or reestablished, and (2) to at least 2 of the witness monuments shown on the drawing in (d), above.

None

(f) Was the corner restored through acceptance of (1) an obliterated evidence location, or, (2) a found perpetuated location?

Restored through acceptance of a found perpetuated location.

(g&h) Was the corner reestablished through lost corner proportionate methods? If so, show the method, including the directions and distances to other public land survey corners used as evidence or used for proportioning in determining the corner location?



(i) I, Gary L. Pisoni
 (type or print name) certify that the corner location shown on this record was determined by me or under my direction and control and that this U.S. Public Land Survey Monument Record is correct and complete to the best of my knowledge and belief.

Gary L. Pisoni 5-24-96
 Signature Date