

U S PUBLIC LAND SURVEY MONUMENT RECORD - ADDENDUM

NOTE: This form is intended and designed to fulfill all requirements of Wisconsin Administrative Code, Chapter A-E 7.08 U.S. Public Land Survey Monument Record (3) (a-i)

A-E 7.08(3)(a) Identity of corner
SOUTH 1/4 CORNER OF SECTION 29
TOWNSHIP 37 NORTH
RANGE 15 EAST OF THE 4TH PM
TOWN OF CASWELL,
COUNTY OF FOREST

WISCRS - FOREST COUNTY
N: 600,262.274 USft (XXX,XXX.XX)
E: 901,837.540 USft (XXX,XXX.XX)
Datum: NAD83 (2011)
GNSS Method RTN - Direct
GNSS Control WISCORS VRS



The coordinate value shown has been verified by the average of two or more GPS observations at a markedly different time. Values shown in parenthesis, are previously published measurements.

A-E 7.08(3)(b) Description of any record evidence, monument evidence, occupational evidence, testimonial evidence, or any other material evidence.

Original Surveyor: James L. Nowlin

Date of Original Survey Commenced: August 7, 1865
Completed: August 18, 1865

Original Accessories:
Fir 10 S 16° E 15 lks
Fir 6 N20° W 10 lks

See Previous Monument Record: Index No. V-7 - December 3, 1886 - Surveyor 1651 - Alan D. Harrison

June, 1988 - Surveyor 1558 - Milo E. Stefan - indicates this position as "found marked by a railroad spike" on Record #371529-19890328
March 30, 1991 - Surveyor 00973 - Wayne G. Dobbratz - indicates this position as "found a railroad spike" on Record #371532-1991100330.
September 25, 1991 - Surveyor 00973 - Wayne G. Dobbratz - indicates this position as "found a railroad spike" on C.S.M.143073.
March 20, 2001 - Surveyor 2197 - Michael A. Trembl - indicates this position as "railroad spike found" on Record #371529-20010320.
October 10, 2005 - Surveyor 2197 - Michael A. Trembl - indicates this position as "existing railroad spike" on Record #371529-20061207.
November 24, 2009 - Surveyor 2197 - Michael A. Trembl - indicates this position as "found railroad spike" on Record #371529-20091124.
November 18, 2015 - Surveyor 809-8 - Michael S. Hess - indicates this position as "S 1/4 Section 29" on Record #371529-20160115.

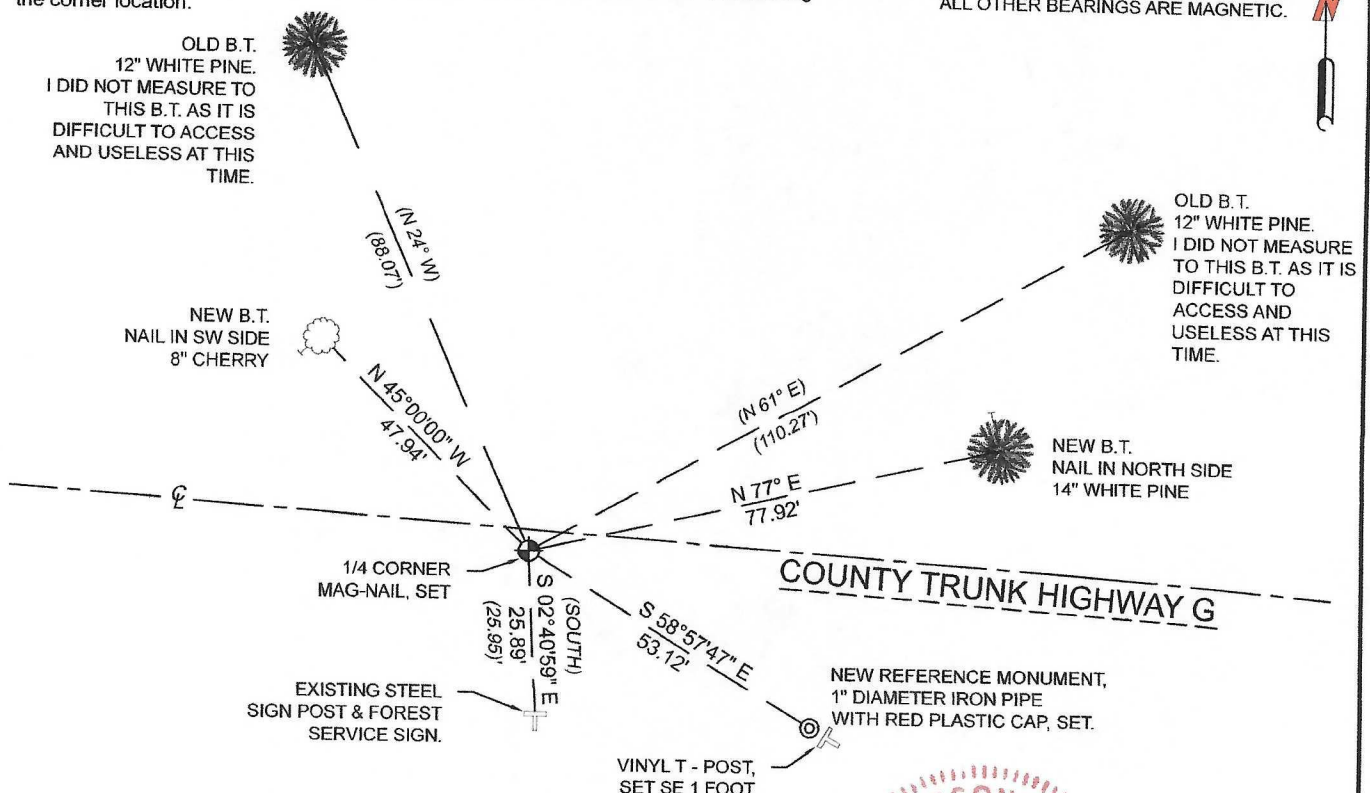
A-E 7.08(3)(f) Whether the corner was restored through acceptance of an obliterated location or a found perpetuated location.

January 20, 2022 - I did not find any monument at this position. I did find 3 of Harrison's reference monuments.
I reestablished the corner position using monuments from Harrison's 1886 survey of Section 32, T.37N., R.15E., and placed a standard size mag nail at the corner location

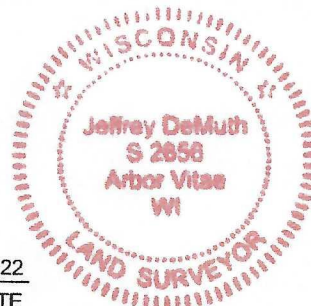
I accept this monument as a FOUND PERPETUATED LOCATION OF THE CORNER and established 3 new witnesses as shown below.

A-E 7.08(3)(c)(d)(e)(h) Plan view of corner with references to at least 4 witness monuments. If in disagreement with previously established corner, show the distances between the two corners and also indicate the ties to the disputed. The directions and distances to other public land survey corners used as evidence or used for determining the corner location.

BEARINGS LISTED TO THE NEAREST
SECOND ARE REFERENCED TO WISCONSIN
COUNTY COORDINATE REFERENCE
SYSTEM - FOREST COUNTY ZONE.
ALL OTHER BEARINGS ARE MAGNETIC.



A-E 7.08(3)(i) I, Jeffrey L. DeMuth, Professional Land Surveyor No. S-2656, hereby certify that the corner location on this record was determined by me or under my direction and control and that this U.S. Public Land Survey Monument Record is correct and complete to the best of my knowledge, and belief



SIGNATURE

August 12, 2022

DATE

43715290020

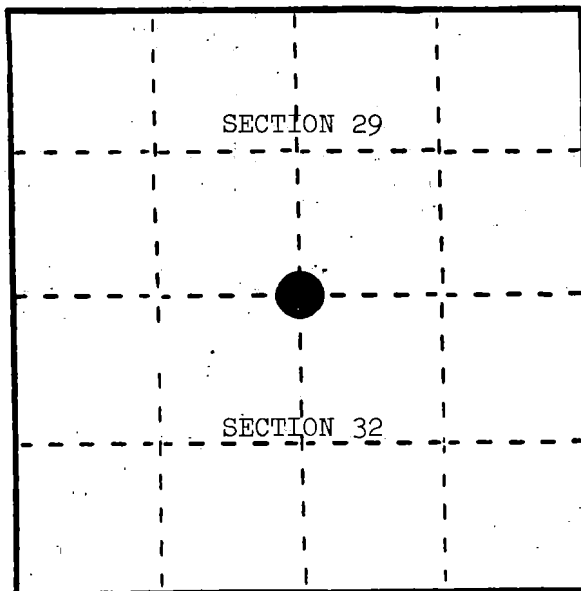
U. S. PUBLIC LAND SURVEY MONUMENT RECORD

INSTRUCTIONS:

This record shall show the location of the corner and shall include all of the following nine elements (a through i).

- (a) Identify the corner by reference to the U.S. public land survey system.
○ = Corner monument restored.

Quarter corner to Sections 29 and 32, T.37N., R.15E.



REGISTER'S OFFICE
Forest County, Wis.

Received for record this 3rd day
of December A.D., 1986 at
1:30 o'clock P.M. and recorded
in Vol. CORNER RESTORATIONS
page 1-7
Paul A. Schenck
Register of Deeds

- (b) Describe any record evidence, monument evidence, occupational evidence, testimonial evidence or any other material evidence you considered, and whether the monument was found or placed.

In 1865, J. L. Nowlin set wood post with the following BTs: Fir, 10", S.16°E., 15 links; Fir, 6", N.20°W., 10 links.

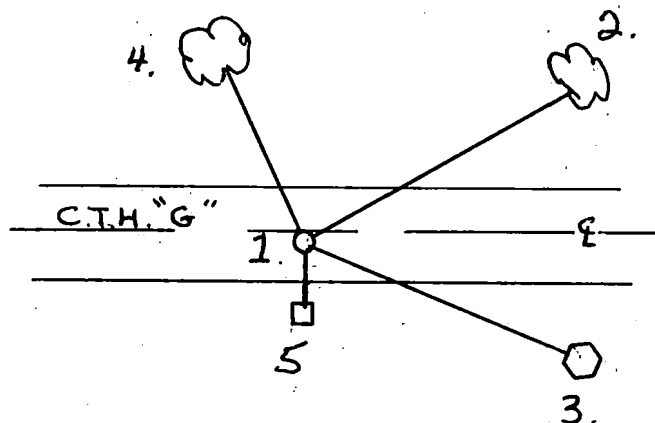
In 1984, Mike Hess tied off a post on the south side of Highway "G" prior to reconstruction of the road. In that same year, Glen Barker placed an iron pipe next to the wood post and noted that the wood post was scribed "1/4S," but couldn't indicate whether it was a witness corner or the actual quarter corner.

In 1986, Alan Harrison and Glen Barker visited the location. Glen pointed out the location of the pipe and wood post as he had seen it in the past, but both were gone. The position pointed out by Glen is supported by Mike Hess's tie (a Balsam tree with a railroad spike) and falls at a more equal distance position between section corners. Alan Harrison accepted this position as the quarter corner and marked it with a railroad spike.

- (c) In the plan view drawing below, provide reference ties to at least 4 witness monuments, or, if the location is within a municipality, to at least 2 witness monuments. (Witness monuments shall be made of concrete, natural stone, iron or other equally durable material.)
Describe witness monuments.

- (d) Show a plan view drawing depicting the relevant monuments and reference ties which is sufficient in detail to enable accurate relocation of the corner monument if the corner monument is disturbed. Indicate north.

1. Railroad spike 2.0 feet south of centerline of Highway "G" marking the quarter corner.
2. White Pine, 13", N.61°E., 110.27 feet
3. Power Pole #T3715-32E1, S.70°E., 94.90 feet
4. White Pine, 12", N.24°W., 88.07 feet
5. Steel Sign Post, 6', South, 25.95 feet



(e) Describe any material discrepancy between the location of the corner as restored or reestablished and the location of that corner as previously restored or reestablished by distance and direction. Show the discrepancy on the plan view drawing under (d), above. Show the distances between the corner as previously restored or reestablished and (1) the corner as restored or reestablished, and (2) to at least 2 of the witness monuments shown on the drawing in (d), above.

(f) Was the corner restored through acceptance of (1) an obliterated evidence location, or, (2) a found perpetuated location?

(1) an obliterated evidence location.

(g&h) Was the corner reestablished through lost corner proportionate methods? If so, show the method, including the directions and distances to other public land survey corners used as evidence or used for proportioning in determining the corner location?

No.

(1) I, Alan D. Harrison
(type or print name) certify that the corner location shown on this record was determined by me or under my direction and control and that this U.S. Public Land Survey Monument Record is correct and complete to the best of my knowledge and belief.

Signature

Date

12-03-86

