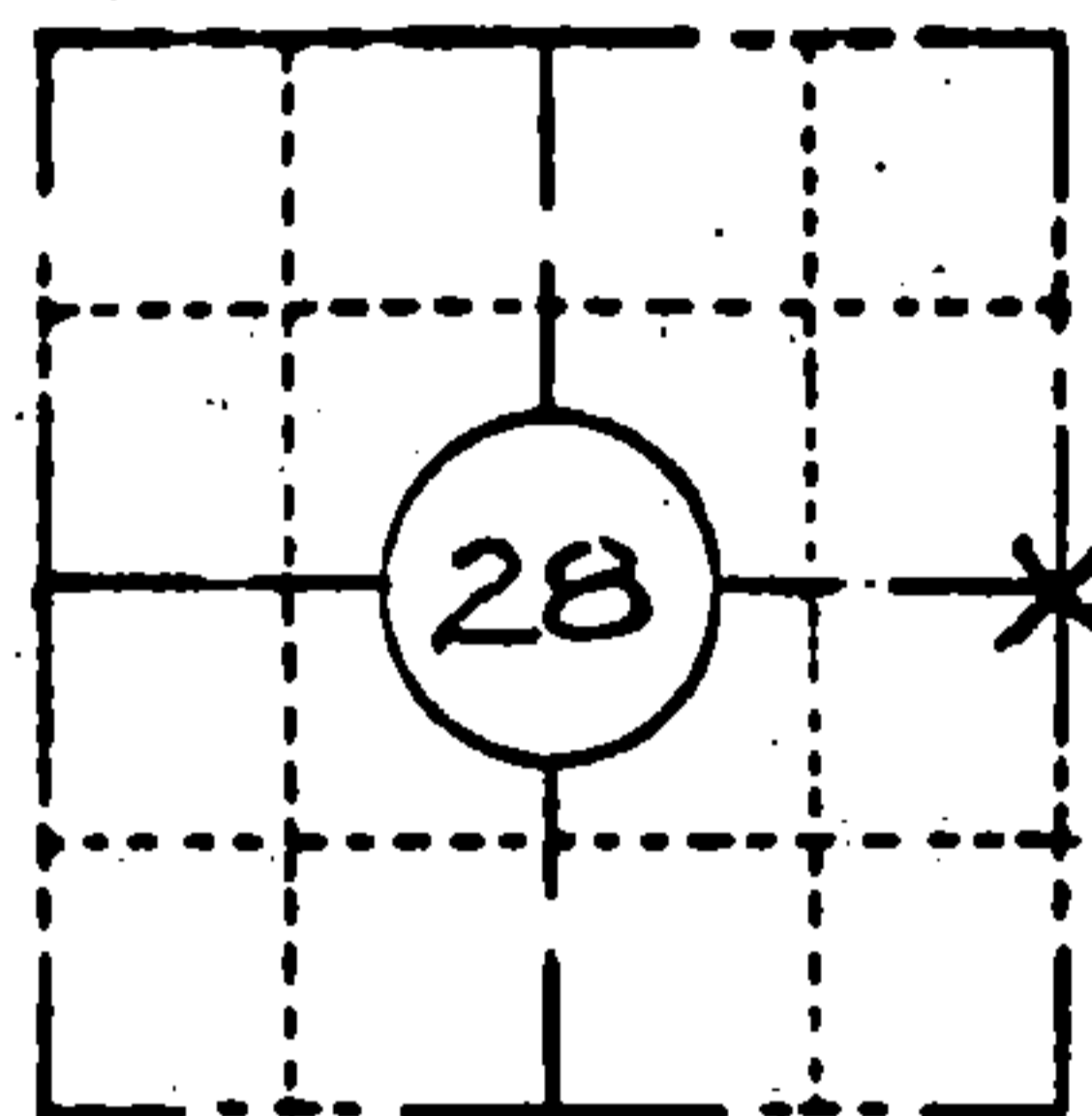


**ORIGINAL ON FILE IN CO CLERK'S OFFICE  
COPY HERE FOR REFERENCE**

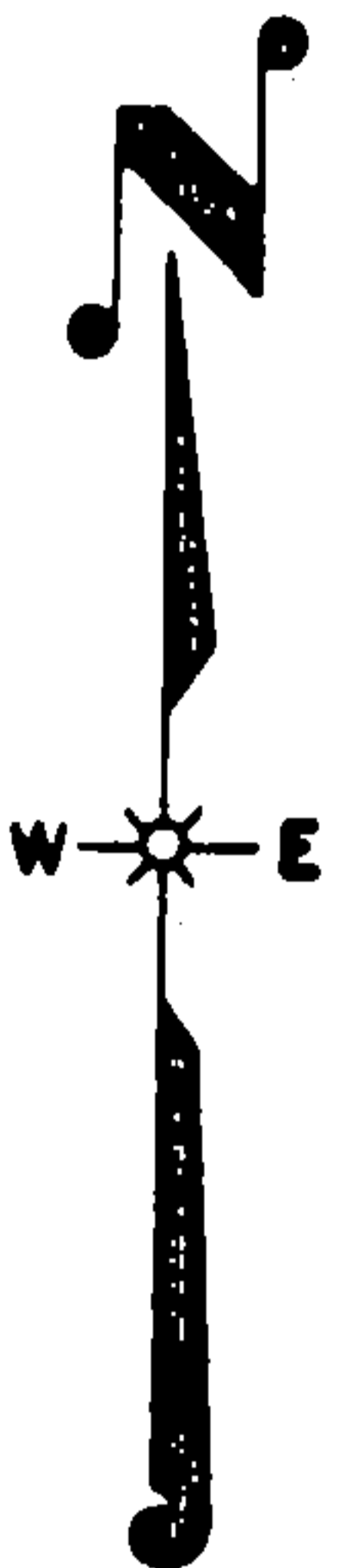
FIELD SURVEY NOTES  
**PRESERVATION OF LANDMARKS**  
(Pursuant to Section 59.635(7) Wisconsin Statutes  
E-D-707-69

State of Wisconsin / Department of Transportation

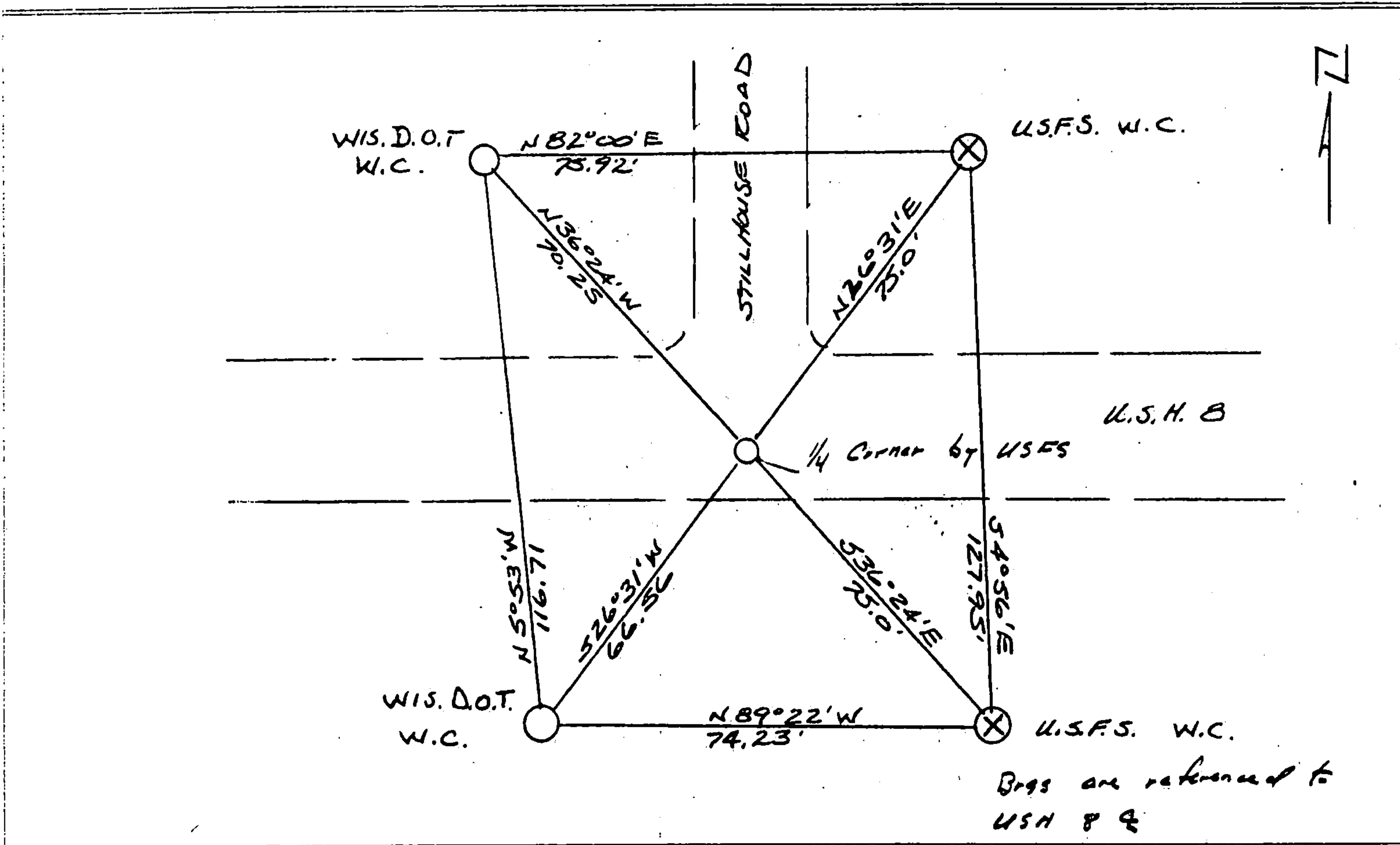
COUNTY <b>FOREST</b>		
TOWN <b>CASWELL</b>		
HIGHWAY <b>U.S.H. 8</b>		
SECTION <b>28</b>	TOWNSHIP <b>37 N</b>	RANGE <b>15 E</b>
TYPE OF LANDMARK <b>P.K. NAIL - SET FROM U.S.F.S. W.C.'S</b>		



**LOCATION SKETCH**  
(Location of landmark indicated by "x")



This space for copy of field notes or ties to the above described landmarks



FILED UNDER PROJECT <b>1592-02-70</b>			COUNTY CLERK'S OFFICE COUNTY OF <b>Forest</b> WISCONSIN } 85	
DISTRICT OFFICE NUMBER <b>7</b>	CITY <b>RHINELANDER</b>	COUNTY <b>ONEIDA</b>	DATE RECEIVED FOR RECORD <b>7-10-85</b>	DATE COPY SENT TO COUNTY SURVEYOR <b>N/A</b>
LOCATED OR ESTABLISHED BY NAME <b>JACK R. WALLIN</b>			SIGNATURE OF COUNTY CLERK <b>Dora C. James</b>	
TITLE <b>SURVEY CREW CHIEF</b> DATE _____ <i>Under the direct supervision of Michael Hass 500809</i>				

7-13