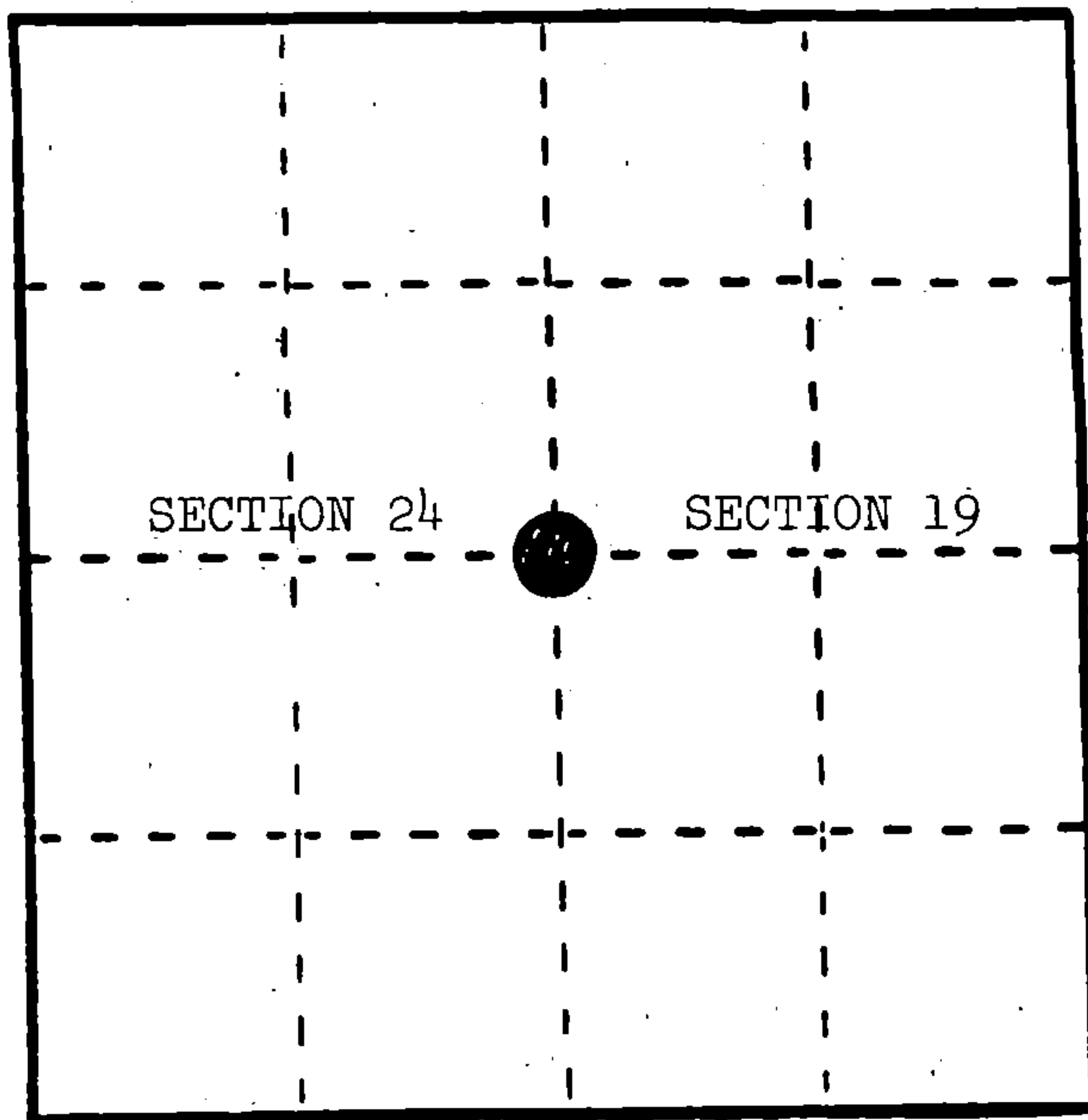


Register

U. S. PUBLIC LAND SURVEY MONUMENT RECORD

INSTRUCTIONS: This record shall show the location of the corner and shall include all of the following nine elements (a through i).

- (a) Identify the corner by reference to the U.S. public land survey system.
- = Corner monument restored.



Quarter Corner between Sections 19 and 24, T.37N., R.15-16E.

REGISTER'S OFFICE  
 Forest County, Wis.  
 Received for record this 17<sup>th</sup> day  
 of March A.D. 1986 at  
10:40 o'clock A.M. and recorded  
 in Vol. CORNER RESTORATIONS  
 page P-25  
*Paul Aschenbrenner*  
 Register of Deeds

- (b) Describe any record evidence, monument evidence, occupational evidence, testimonial evidence or any other material evidence you considered, and whether the monument was found or placed.

In 1857, Artemas Curtis set wood post with the following BTs: Yellow Pine, 20", S.82°E., 182 links; Yellow Pine, 18", N.1°E., 328 links. 2.0 chains south, leave swamp, bears southwest. 5.50 chains south, enter swamp, bears northwest. 13.50 chains south, leave swamp, bears northeast.

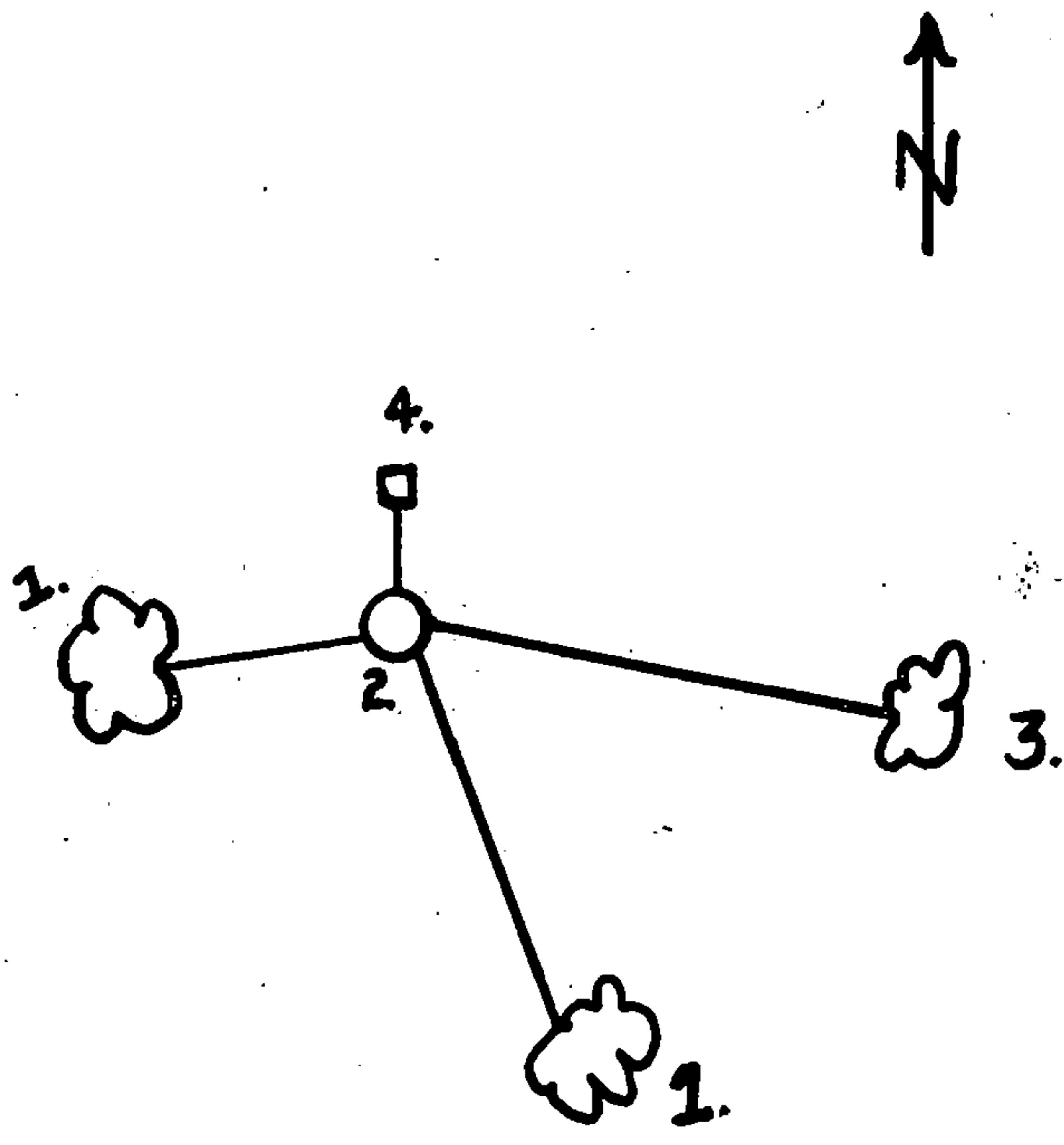
August 3, 1972, J. Resvick found Yellow Pine stump, fire scarred axe marks, blazes, and overgrowth. Pulled S.1°W., 328 links, set point. From point, pulled S.82°E., 182 links. Position falls in road cut along swamp. At point, he set 2" diameter galvanized pipe 5 feet long, filled with concrete with brass cap with the following BTs: Tamarack, 6", S.19°E., 57.86 feet; Tamarack, 5", S.60°W., 15.20 feet.

October 18, 1985, M. Stefan found monument and BTs in good condition. He added one more BT and steel sign post.

- (c) In the plan view drawing below, provide reference ties to at least 4 witness monuments, or, if the location is within a municipality, to at least 2 witness monuments. (Witness monuments shall be made of concrete, natural stone, iron or other equally durable material.) Describe witness monuments.

- (d) Show a plan view drawing depicting the relevant monuments and reference ties which is sufficient in detail to enable accurate relocation of the corner monument if the corner monument is disturbed. Indicate north.

- Resvick's BTs:  
 Tamarack, 6", S.19°E., 57.86 feet  
 Tamarack, 5", S.60°W., 15.20 feet
- 2" galvanized pipe with brass cap stamped to identify corner.
- Milo Stefan's BT:  
 Tamarack, 5", S.83°E., 68.91 feet
- Steel Sign Post, North, 0.9 feet



(e) Describe any material discrepancy between the location of the corner as restored or reestablished and the location of that corner as previously restored or reestablished by distance and direction. Show the discrepancy on the plan view drawing under (d), above. Show the distances between the corner as previously restored or reestablished and (1) the corner as restored or reestablished, and (2) to at least 2 of the witness monuments shown on the drawing in (d), above.

None.

(f) Was the corner restored through acceptance of (1) an obliterated evidence location, or, (2) a found perpetuated location?

(2) a found perpetuated location.

(g&h) Was the corner reestablished through lost corner proportionate methods? If so, show the method, including the directions and distances to other public land survey corners used as evidence or used for proportioning in determining the corner location?

No.

Affix Land Surveyor Seal



(i) I, Milo E. Stefan

(type or print name) certify that the corner location shown on this record was determined by me or under my direction and control and that this U.S. Public Land Survey Monument Record is correct and complete to the best of my knowledge and belief.

Milo E. Stefan  
Signature

1/3/06  
Date

CERTIFIED LAND CORNER RESTORATION

State of Wisconsin }  
County of Forest } ss.

I Jean F. Resvick, do hereby certify that on the 3rd day of August, 1972, I found evidence of the East Quarter corner of Section 24 Township 37 North, Range 15 East, Fourth Principal Meridian, as described hereon; and that from this evidence I established a new monument and accessories as described hereon to perpetuate the original location of this corner:

Description of original monument and accessories and subsequent restorations:

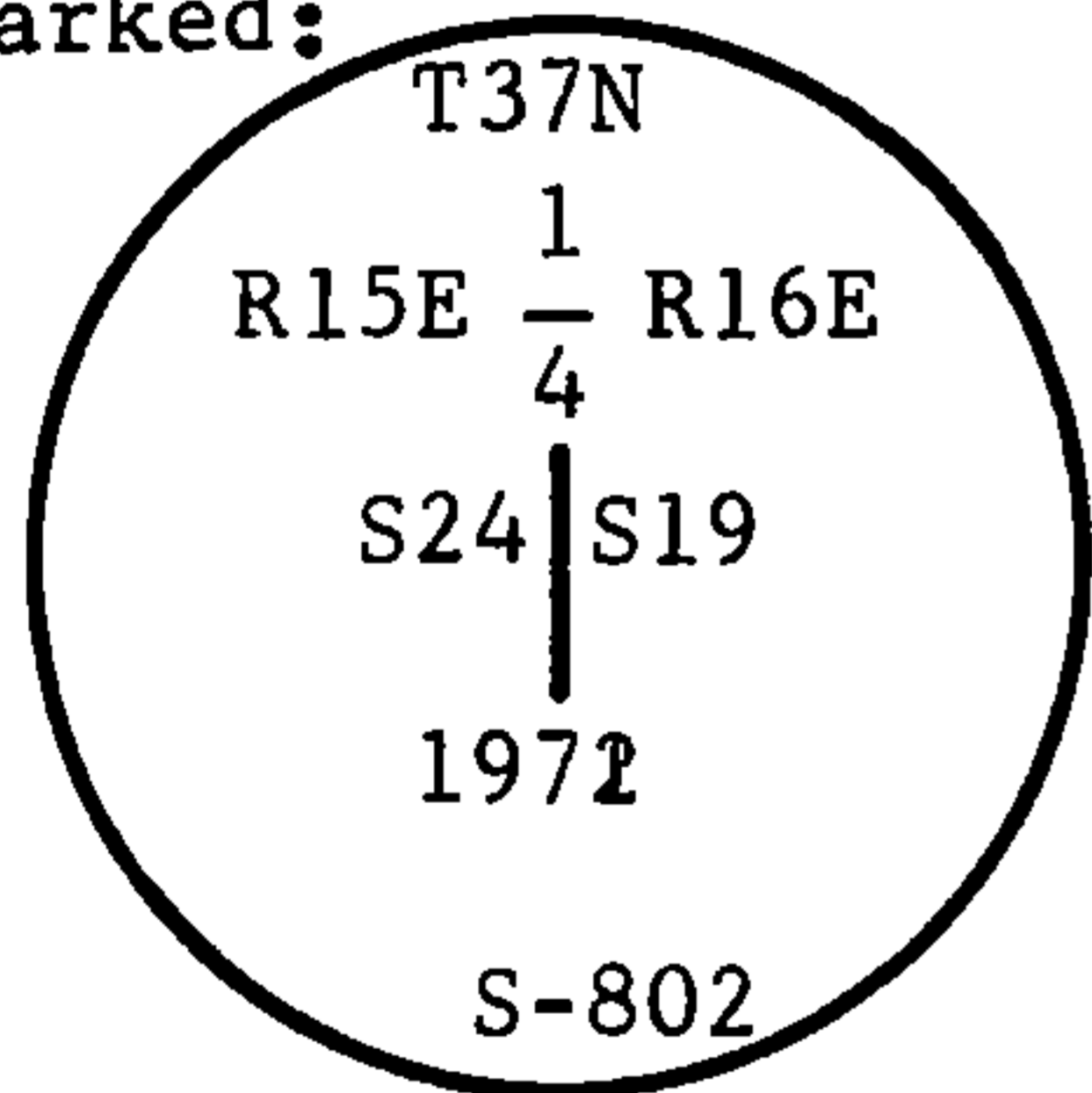
Surveyed in 1857 by Artemas Curtis.  
North between sections 19 and 24. 40.0 chains set quarter section post between sections 19 and 24.  
Y. Pine, 20" S82E, 182 lks.  
Y. Pine, 18", N1E, 328 lks.  
3 chains North leave swamp, bears NW and NE

Description of corner evidence found:

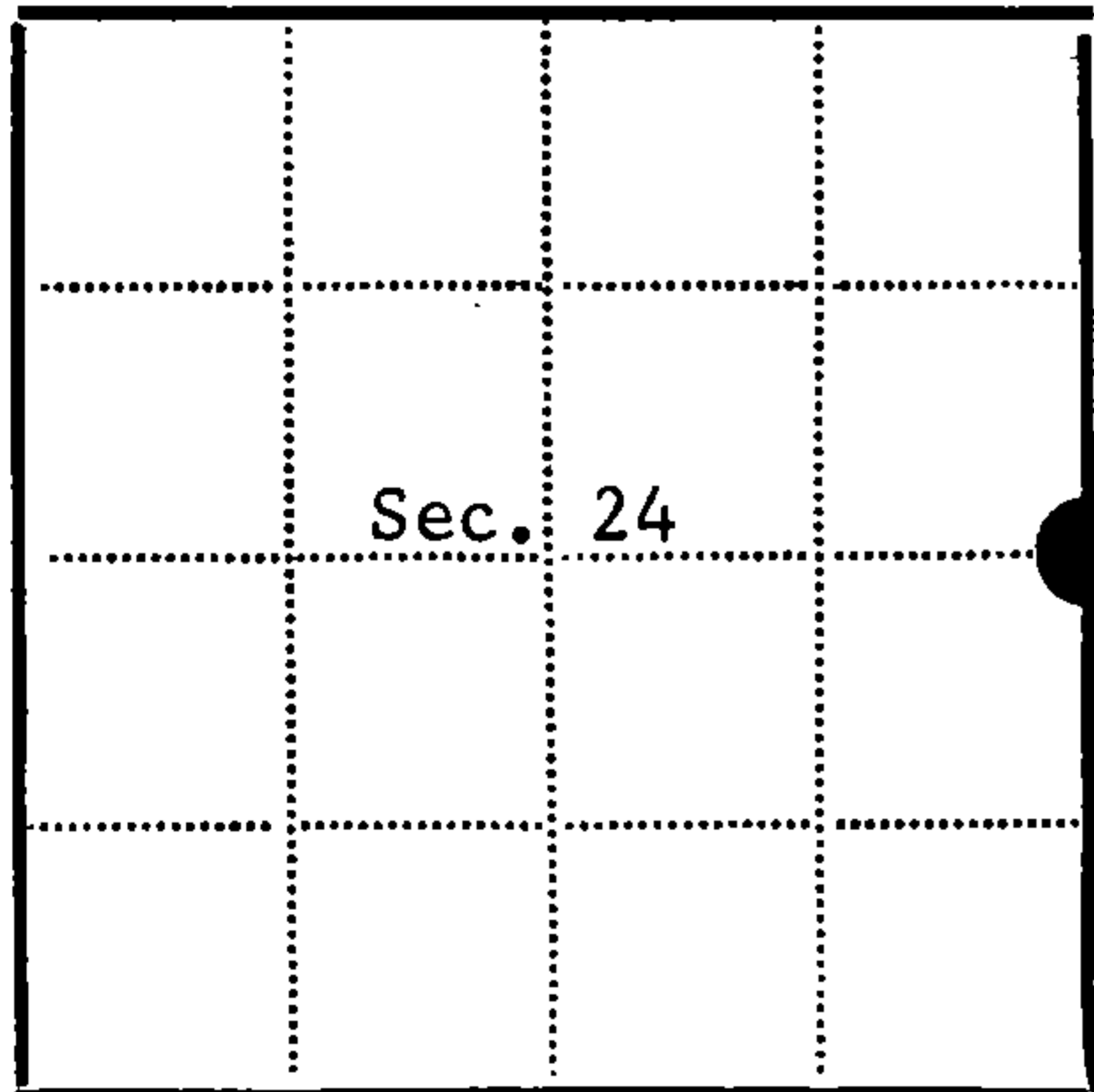
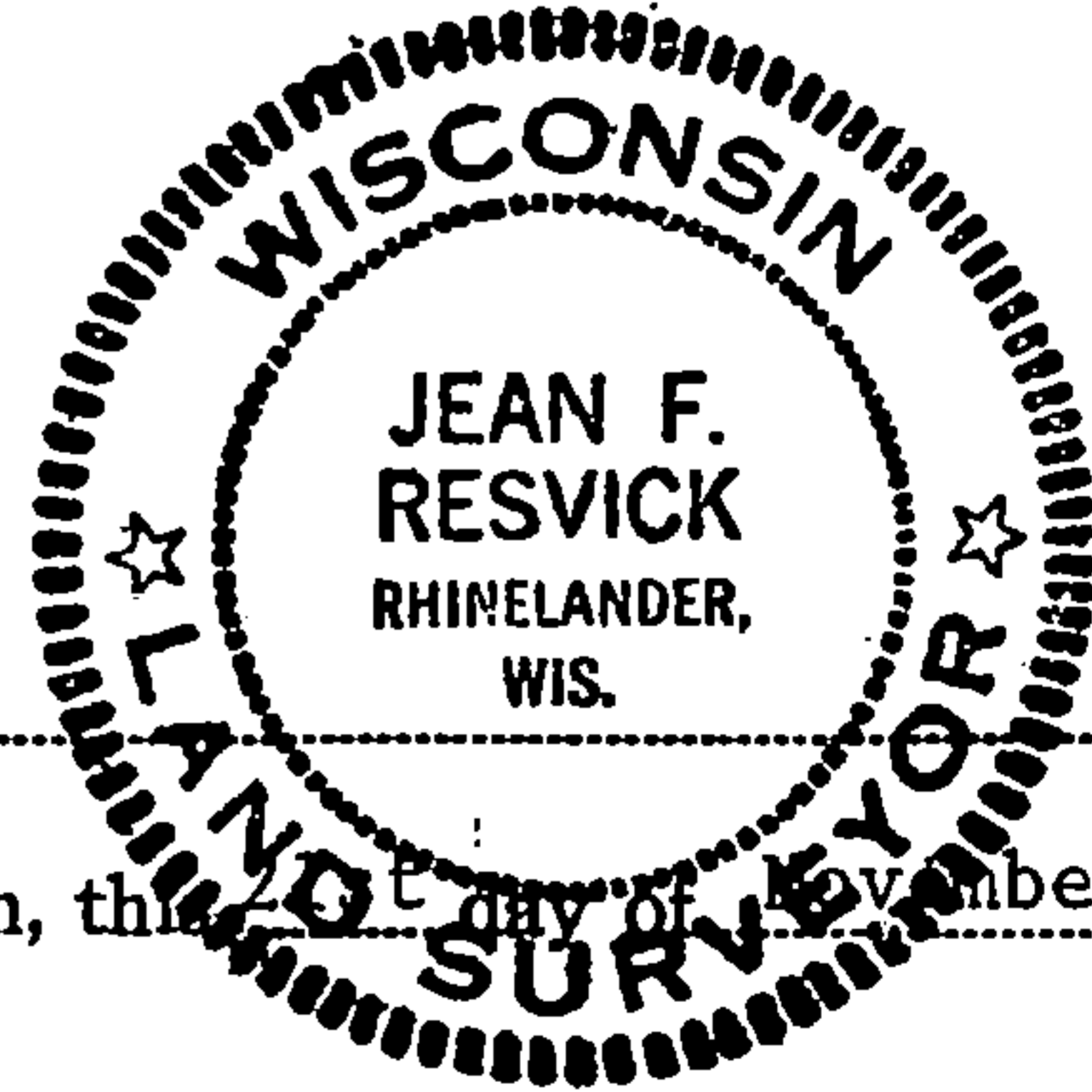
Y. Pine stump, old blaze, axe marks, and overgrowth. No scribing because of fires. Other bearing tree falls in old road cut on the edge of the swamp.

Description of monument and accessories I established to perpetuate the original location of this corner:

At a point S1W, 216.5 feet from the bearing tree found, I set 2" inside diam. galvanized wrought iron pipe, 5 feet long, filled with concrete with a brass cap marked:



From which the following accessories bear:  
Tamarack, 6", S19E, 57.86 feet  
Tamarack, 5", S60W, 15.20 feet  
Set stell sign post by the monument



● = Corner monument restored  
□ =

Resident witnesses.....  
Dated at Rhinelander Wisconsin, this 1st day of November 1972.  
Signature Jean F. Resvick Title Land Surveyor  
(County Surveyor, Registered Land Surveyor, or other duly authorized official)

Surveyors Registration No. S-802 DOCUMENT NUMBER 103126

Office of Register of Deeds County of Forest  
I hereby certify that the within instrument was filed in this office for record on the 10th day of April, 1973, and was filed in Book No. Page No. P-25 of County Records.

Signature Eugene Stegny Title Register of Deeds

Township 37 North, Range 15 East, Section 24, Index No. P-25, Page No.

# U.S. PUBLIC LAND SURVEY MONUMENT RECORD

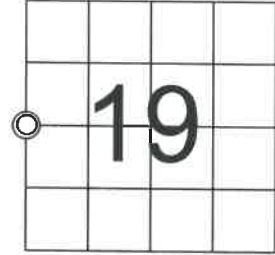
Note: This form is intended and designed to fulfill all requirements of Wisconsin Administrative Code. Chapter A-E 7.08 U.S. Public Land Survey Monument Record (3)(a)(b)(c)(d)(e)(f)(g)(h)(i). An additional sheet may be added to if necessary to conform with said requirements.

(a) Corner Location: West Quarter Corner  
Section 19,  
Township 37 North,  
Range 16 East,  
Town of Armstrong Creek,  
Forest County, Wisconsin

FOREST COUNTY, WI  
CORTNEY BRITTEN CLEEREMAN  
REGISTER OF DEEDS  
RECEIVED FOR RECORD

DEC 19 2018

Time: 9:00 A.M.  
Vol: Corner Restoration  
Page Number: P-1



SEC 19-T37N-R16E

(b)(f)(g)(h) Description of monument found at this corner and if it was accepted, state all evidence (material, testimonial, occupational, plats, records, other monuments) used as a basis for accepting. If not accepted or if nothing was found, state evidence used as basis for establishing location. If reestablishment through lost corner proportionate methods, indicate all monuments, distances and directions used to establish. Indicate type of monument found or set and sign post.

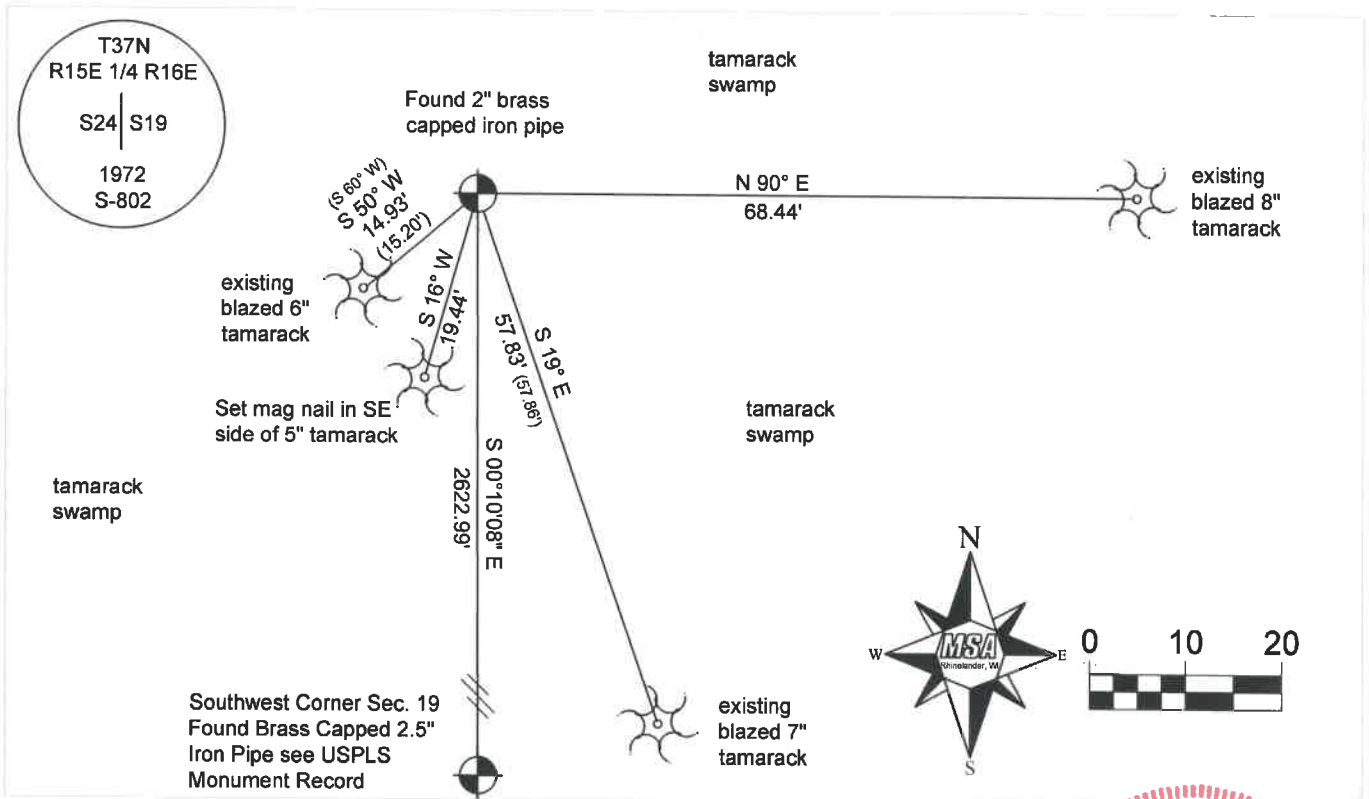
1857 Sept. - Oct. - Artemas Curtis - Set Quarter Section Post. Yellow Pine 20 S82°E, 182 lks, Yellow Pine 18 N01°E 328 lks.

1972 November - Jean F. Resvick - found "Yellow Pine Stump, old blaze, axe marks, and overgrowth. No Scribbling because of fires. Other bearing tree falls in old road cut on the edge of the swamp. At a point S 01°W, 216.5 feet from the bearing tree found, set a 2" inside diameter galvanized iron pipe, 5 feet long, filled with concrete with brass cap." witnessed by  
6" Tamarack S19°E, 57.86 feet  
5" Tamarack S50°W, 15.20 feet  
set steel sign post by monument

---- various surveys accept iron pipe as corner.

2018 September - Chad A. Besaw - Found and accepted galvanized 2" iron pipe with brass cap, witnessed as shown below.

(c)(d)(e) Plan view of corner with ties to at least 4 witness monuments. If in disagreement with previously established corner, show the distances between the two corners and also indicate the ties to the disputed corner.



(i) I, Chad A. Besaw, Professional Land Surveyor #S-3029, hereby certify that the corner location on this record was determined by me or under my direction and control and that this U.S. Public Land Survey Monument Record is correct and complete to the best of my knowledge and belief.



*Chad A. Besaw*  
Signature

11/30/2018  
Date

43715.24 2000

Index No.

P1