

CERTIFIED LAND CORNER RESTORATION

State of Wisconsin }
County of Forest } ss.

I Jean F. Resvick, do hereby certify that on the 8th day of July, 1970, I found evidence of the Southeast Section corner of Section 9 Township 37 North, Range 15 East, Fourth Principal Meridian, as described hereon; and that from this evidence I established a new monument and accessories as described hereon to perpetuate the original location of this corner:

Description of original monument and accessories and subsequent restorations:

- Surveyed in 1865 by J. L. Nowlin
- 80.00 chains North between Sections 15 and 16
- Set post
 - Fir 6, N28E, 20 lks.
 - Hemlock 8, S10W, 15 lks.
- 7.50 chains South enter stream and beaver dam
- 17.75 chains North stream 8 lks. wide runs SW
- 7.00 chains West stream 200 lks. wide runs SE

Description of corner evidence found:

Chained South from quarter corner between Section 9 and 10 a distance of 40 chains found 2 squared posts one of which was scribed. Distance from stream North checks. Distance South and West to beaver dam area checks. Recorded stream flow reversed on all 3 calls.

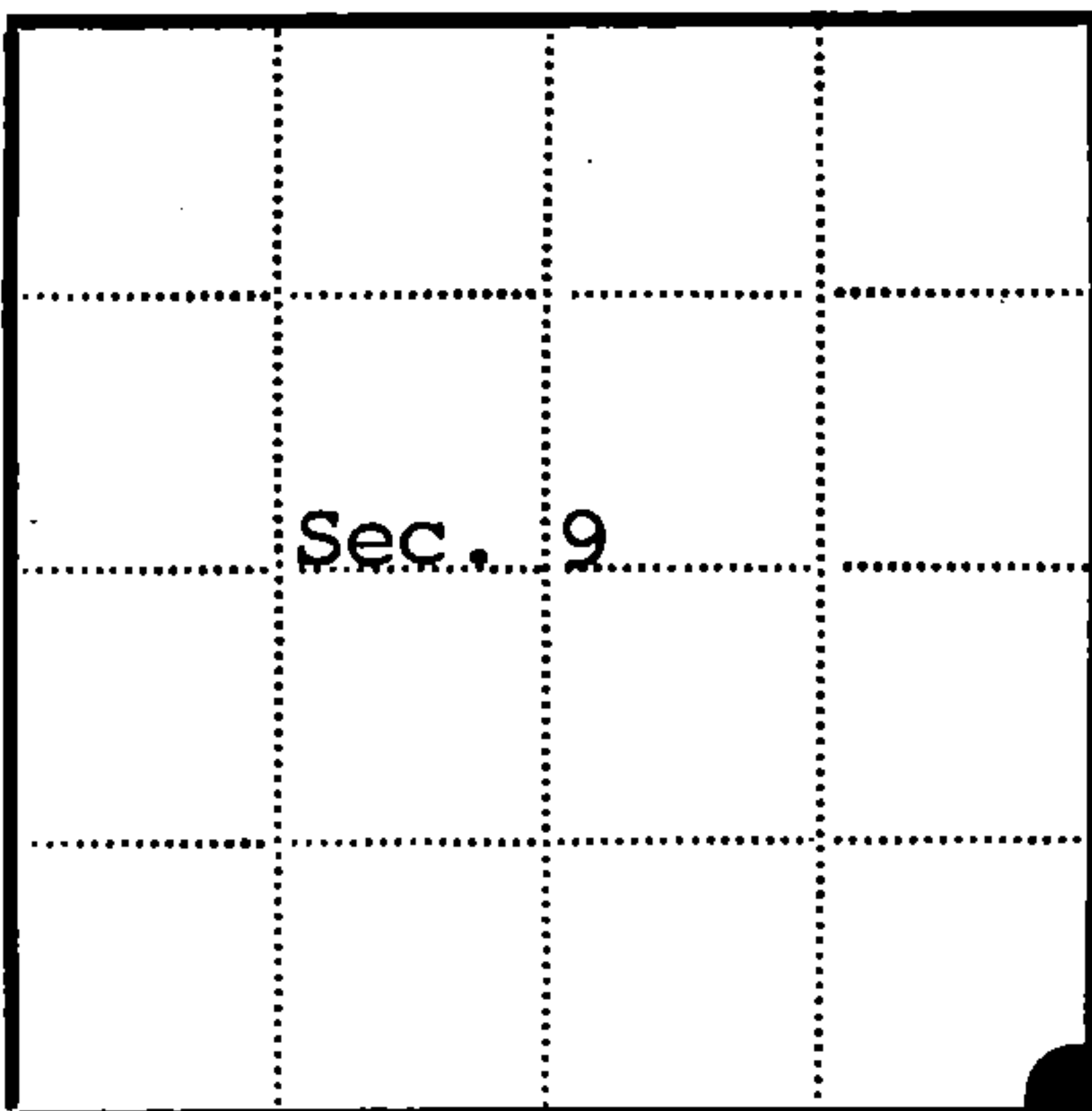
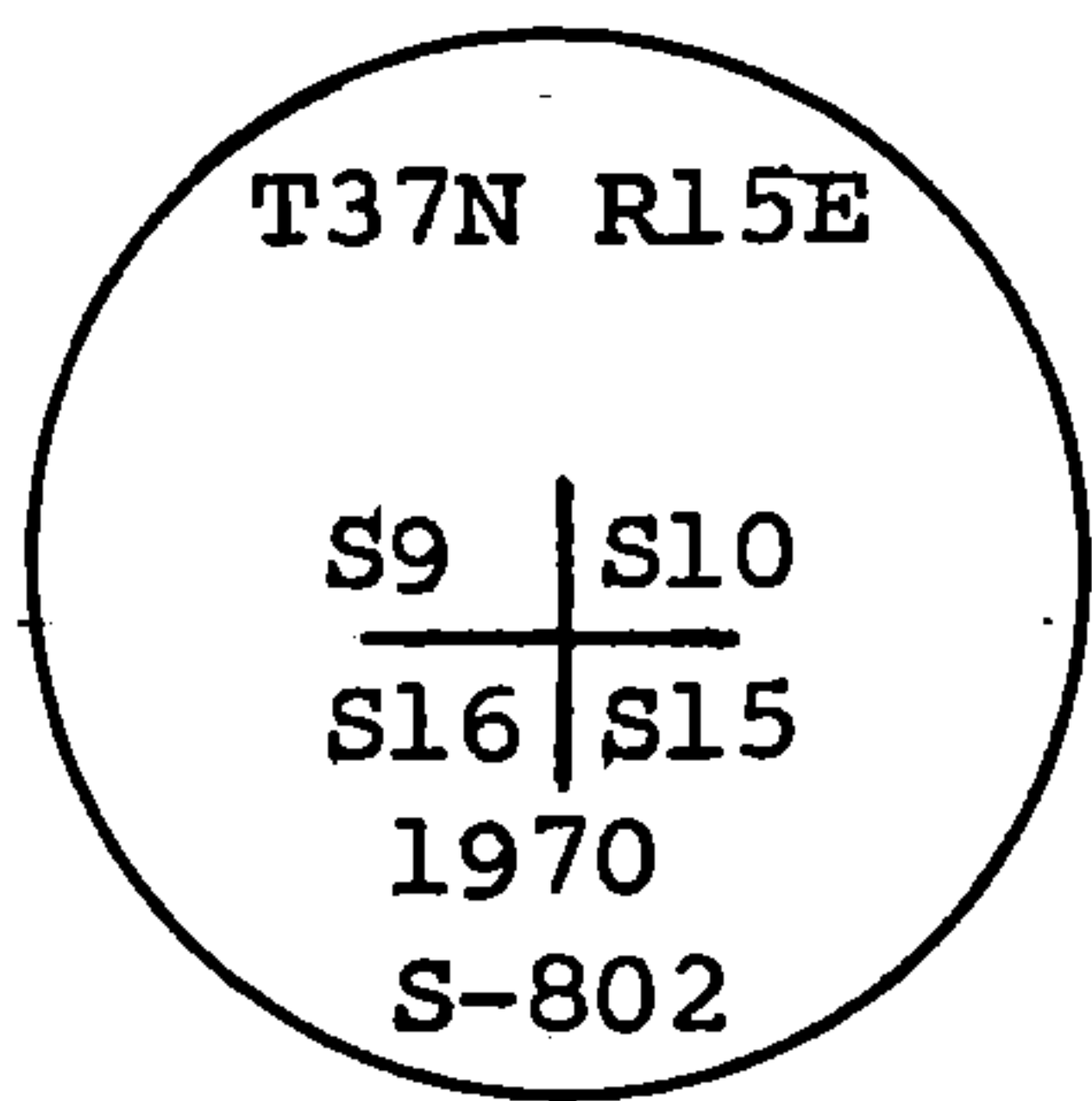
Description of monument and accessories I established to perpetuate the original location of this corner:

Replaced scribed post with a 2 inch inside diameter, galvanized wrought iron pipe, 5 feet long, filled with concrete, with brass cap stamped.

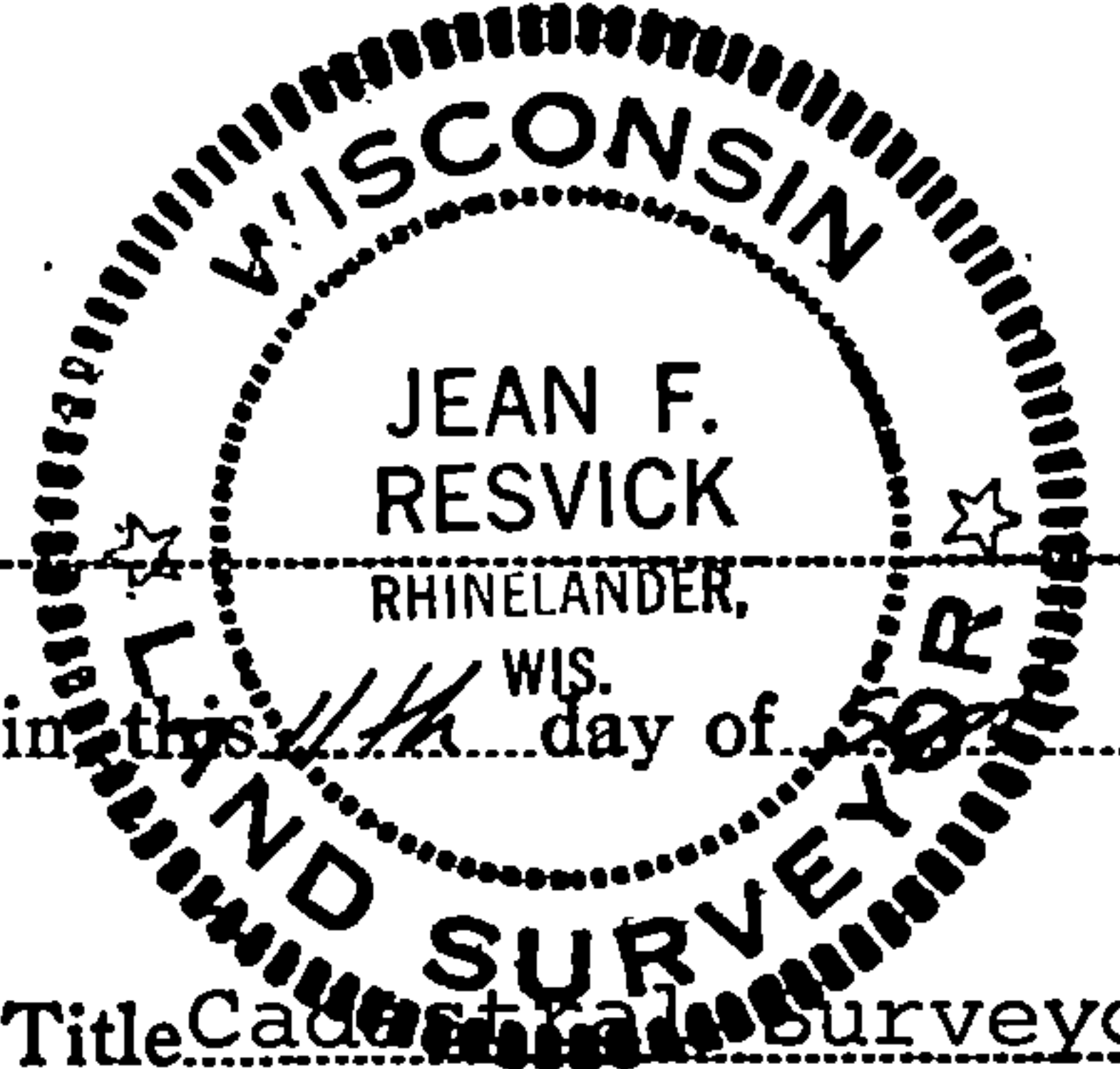
from which the following New blazed and scribed bearing trees bear:

- Black Spruce 4, bears N67E, 13.79 feet
- Black Spruce 4, bears S11E, 1.55 feet
- Black Spruce 6, bears N86W, 23.56 feet
- Black Spruce 7, bears N13W, 3.80 feet

Set iron fence post 1.0 feet Northeast of corner.



● = Corner monument restored
□ =



Resident witnesses _____
Dated at Rhinelander Wisconsin this 11th day of July 1970.
Signature Jean F. Resvick Title Registered Land Surveyor
(County Surveyor, Registered Land Surveyor, or other duly authorized official)

Surveyors Registration No. S-802 DOCUMENT No. 98918

Office of Register of Deeds County of Forest
I hereby certify that the within instrument was filed in this office for record on the 23rd day of October 1970, and was filed in Book No. CORNER RESTORATIONS Page No. J-13 of County Records.

Signature Eugene Stutzman Title Register of Deeds

Township 37 North, Range 15 East, Section 9, Index No. J-13, Page No.

43715090000

713

U.S. PUBLIC LAND SURVEY MONUMENT RECORD

Index No. J-13

State of Wisconsin

County of Forest } ss.

I, Gary L. Pisoni, do hereby certify that on the 16th day of March, 1994, I found evidence of the Northeast Section corner of Section 16 Township 37 North, Range 15 East, Fourth Principal Meridian, as described hereon; and that from this evidence I established a new monument and accessories as described hereon to perpetuate the original location of this corner.

Resident witnesses:

History of original corner establishment:

Original Government Survey in 1865 by J.L. Nowlin. North between Sections 15 and 16, at 80.00 chs., set Section Corner Post, from which the following bear; Fir, 6", N28°E, 20 lks., Hemlock, 8", S10°W, 15 lks.

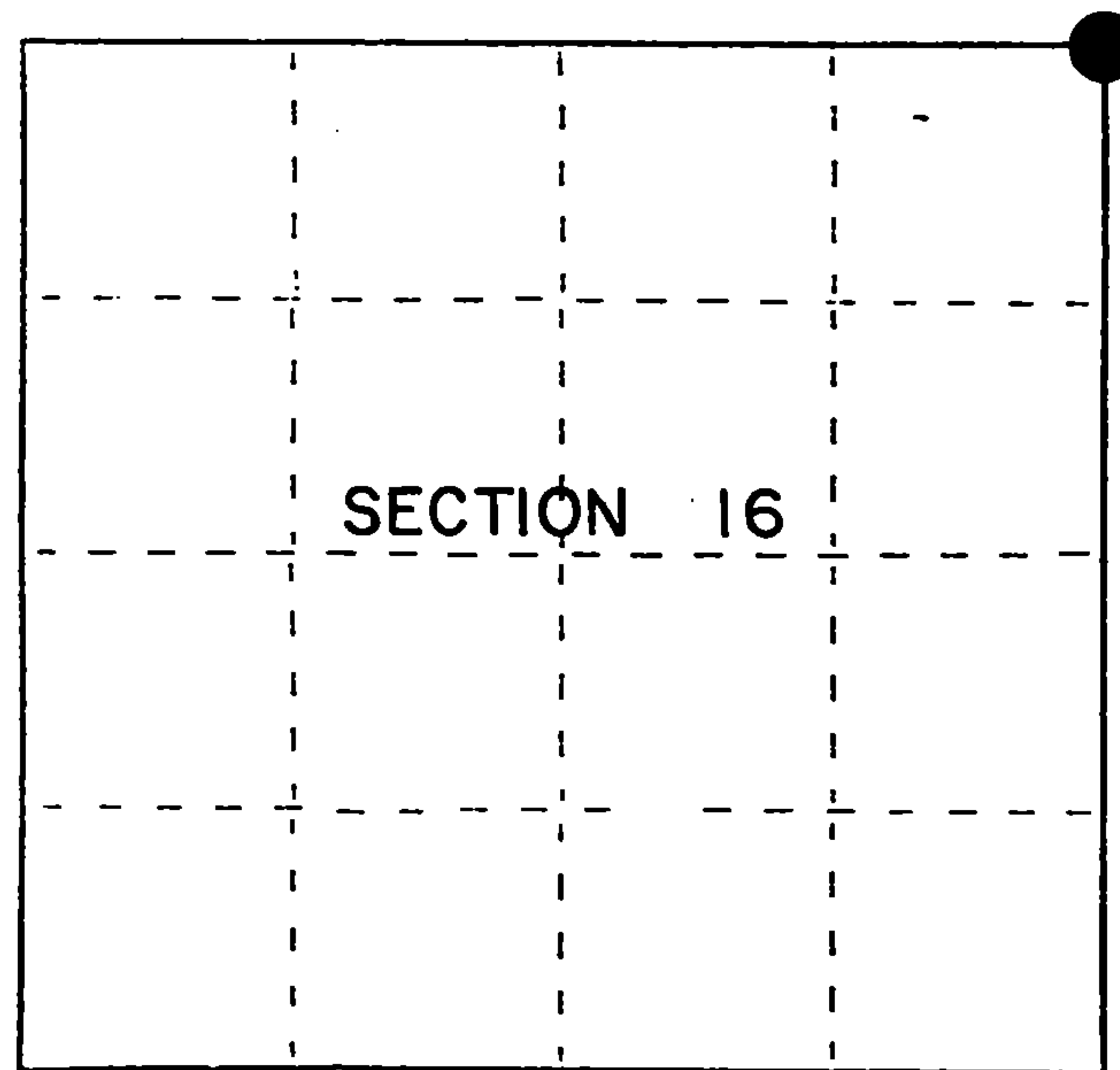
On 7-8-70, Jean Resvick, a Land Surveyor with the Forest Service, found 2 wood posts, one of which was scribed. Original calls North, South & West fit. In place of scribed wood post, set a 2 inch dia. galvanized iron pipe, 5 feet long, with a brass cap stamped; T37N, R15E, S9, S10, S15, S16, 1970, S-802. Blazed and scribed the following new bearing trees; B. Spruce, 4", N67°E, 13.79 feet, B. Spruce, 4", S11°E, 1.55 feet, B. Spruce, 6", N88°W, 23.56 feet, B. Spruce, 7", N13°W, 3.80 feet, Iron Fence Post, Northeast, 1.0 feet

Description of corner evidence found: Found the monument as described and in place, and the following bearing trees;

Table with 4 columns: Tree description, Diameter, Bearing, Distance. Includes (Dead) B. Spruce 4" N67°E 13.79 feet, B. Spruce 4" S11°E 1.55 feet, B. Spruce 6" N88°W 23.56 feet, (Dead) B. Spruce 7" N13°W 3.80 feet, Iron Fence Post Northeast 1.05 feet.

Description of monument and accessories I established to perpetuate the original location of this corner. Blazed and scribed the following new bearing trees; (Measurements are taken to a nail in side of tree)

Table with 4 columns: Tree description, Diameter, Bearing, Distance. Includes B. Spruce 7" S51°W 37.68 feet, B. Spruce 7" N34°W 21.82 feet.



● = Corner monument restored.

Dated at Iron River, MI : ~~xxxx~~ this 22nd day of April, 1994

Signature Gary L. Pisoni Title Land Surveyor Registration No S-1634 (County Surveyor, Registered Land Surveyor, or other duly authorized official)

Office of Register of Deeds, County of Forest, I hereby certify that the within instrument was filed in this office for record on the 20th day of March, 1994 at 1:30 o'clock P. M.

(Register of Deeds)

By [Signature] Deputy

FORM NO. 985-A

H.C. Miller Company

Stock No. 26273

158130

43715090000

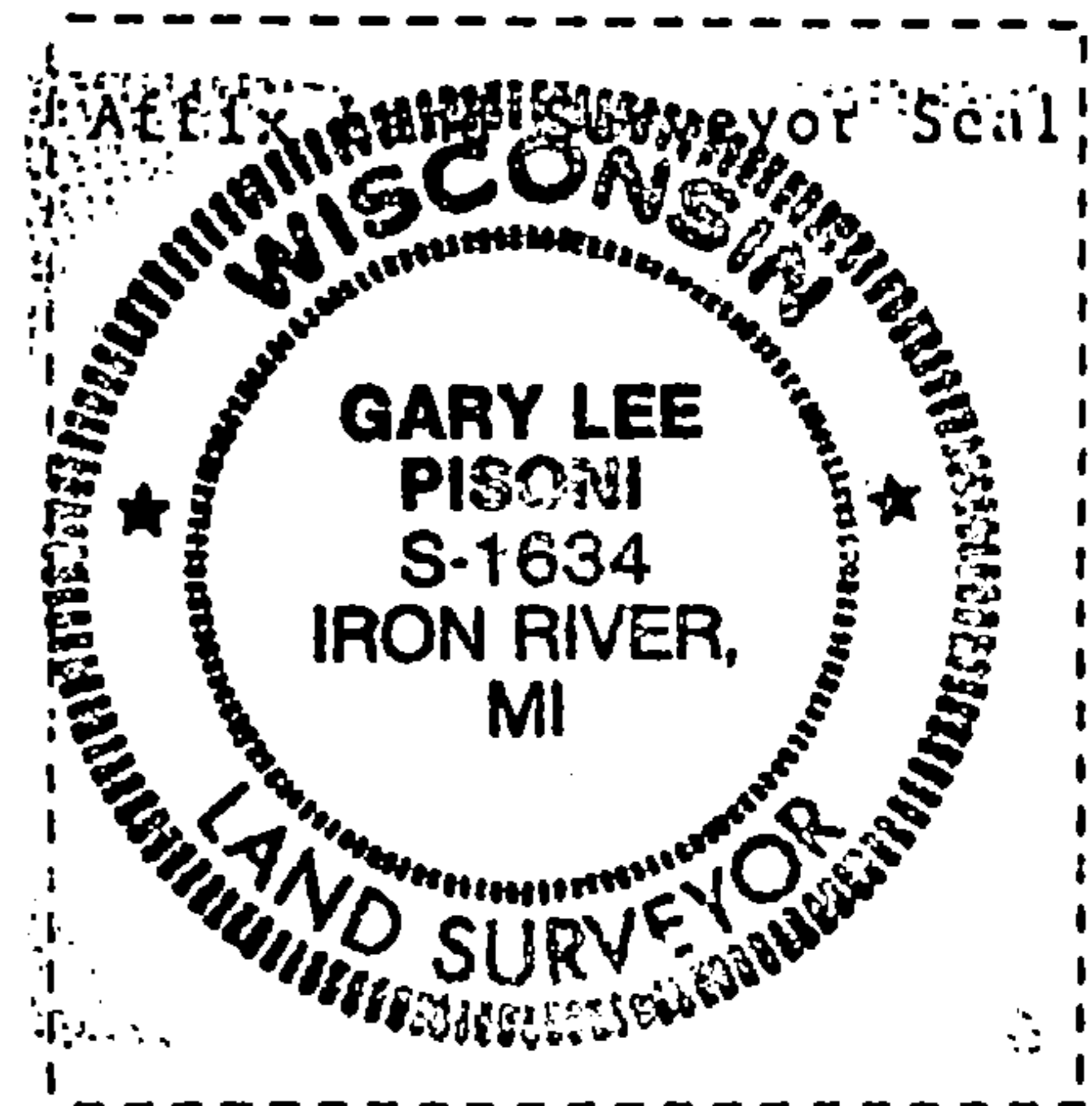
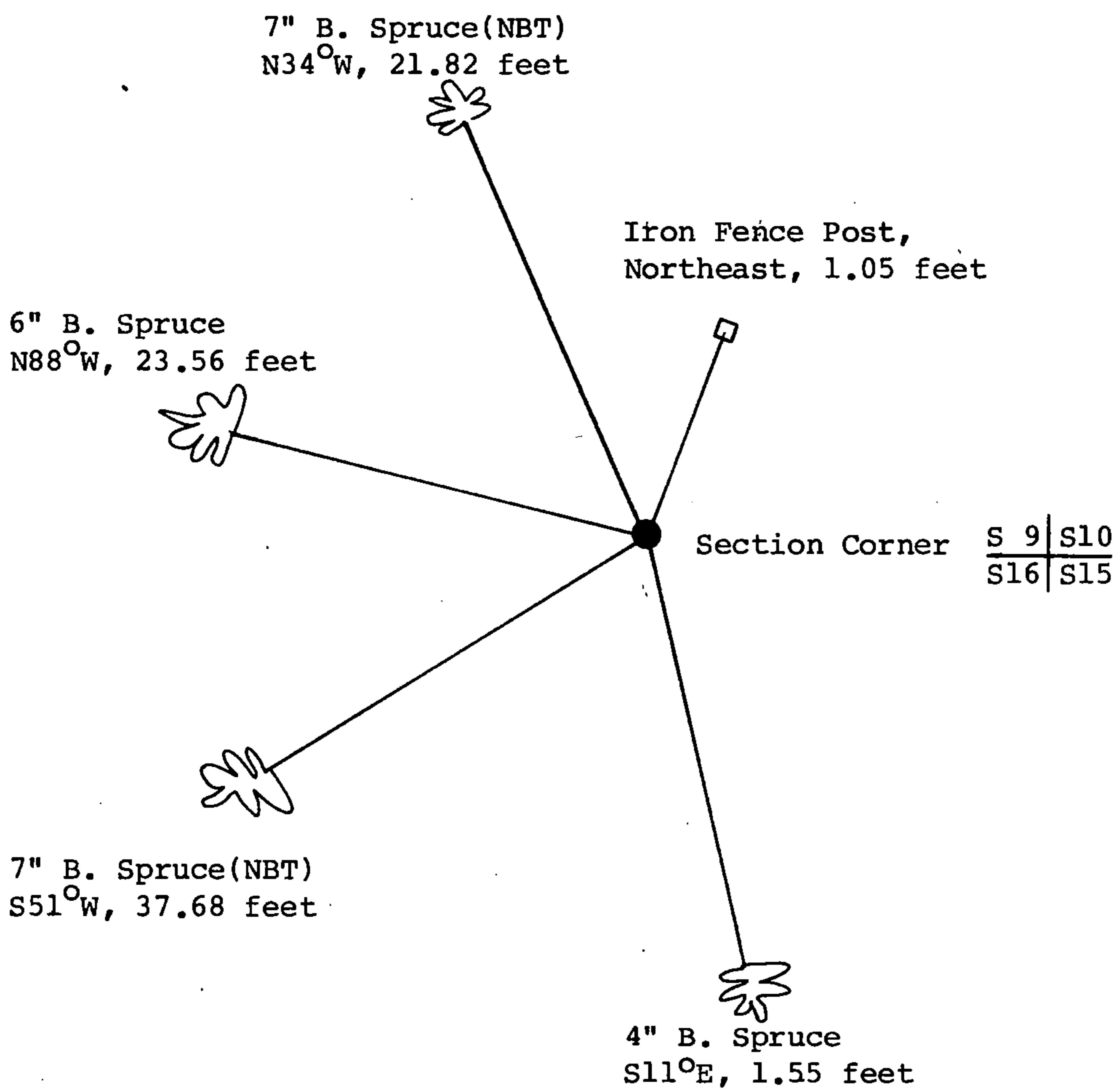
(e) Describe any material discrepancy between the location of the corner as restored or reestablished and the location of that corner as previously restored or reestablished by distance and direction. Show the discrepancy on the plan view drawing under (d), above. Show the distances between the corner as previously restored or reestablished and (1) the corner as restored or reestablished, and (2) to at least 2 of the witness monuments shown on the drawing in (d), above.

See drawing below.

(f) Was the corner restored through acceptance of (1) an obliterated evidence location, or, (2) a found perpetuated location?

Restored through acceptance of a found perpetuated location.

(g&h) Was the corner reestablished through lost corner proportionate methods? If so, show the method, including the directions and distances to other public land survey corners used as evidence or used for proportioning in determining the corner location?



(i) I, Gary L. Pisoni
(type or print name) certify that the corner location shown on this record was determined by me or under my direction and control and that this U.S. Public Land Survey Monument Record is correct and complete to the best of my knowledge and belief.

Gary L. Pisoni
Signature

9-18-95
Date