

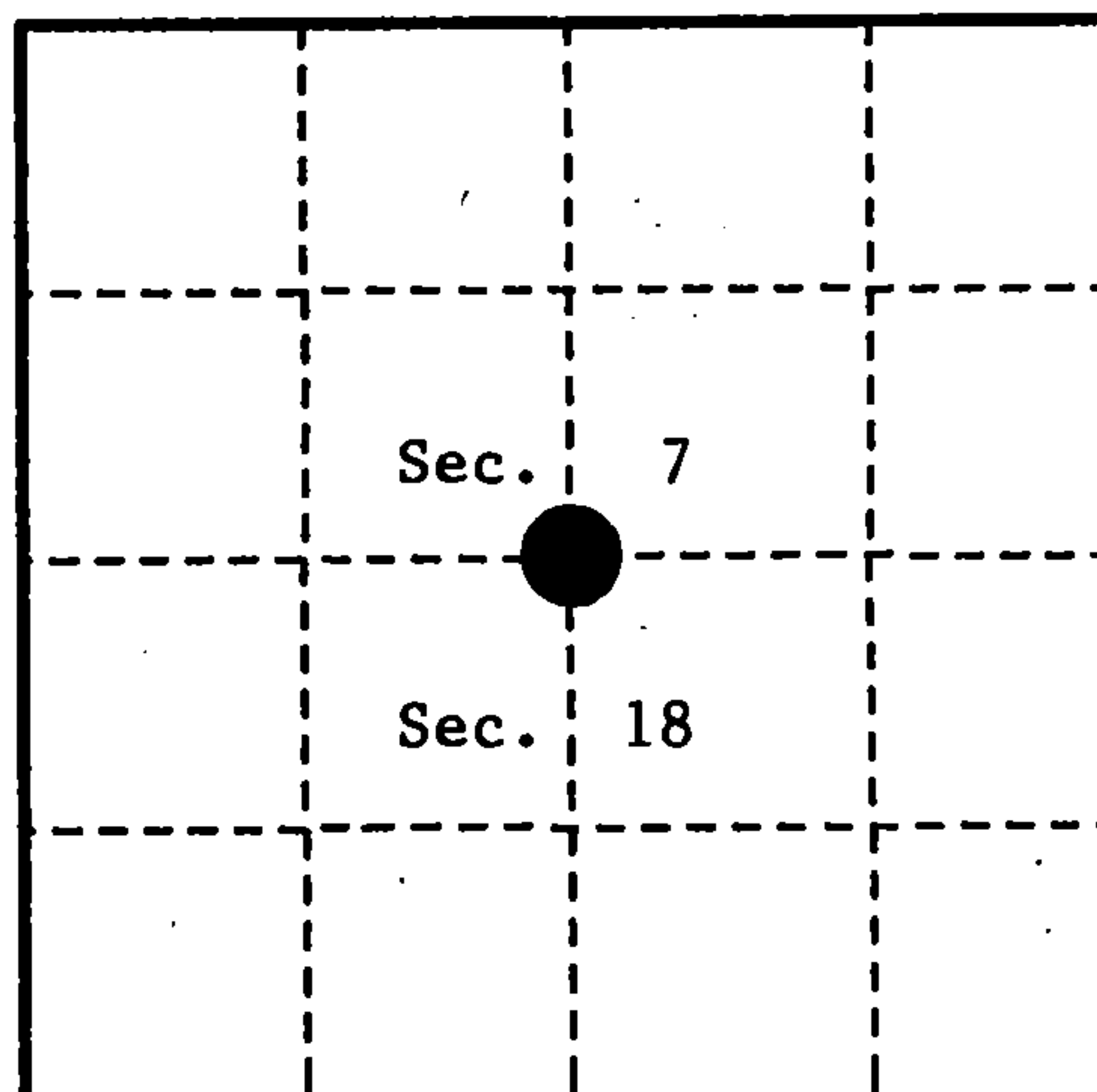
U. S. PUBLIC LAND SURVEY MONUMENT RECORD

INSTRUCTIONS:

This record shall show the location of the corner and shall include all of the following nine elements (a through i).

- (a) Identify the corner by reference to the U.S. public land survey system.
 O = Corner monument restored.

Quarter Corner to Sections 7 and 18,
 T.37N., R.15E., Forest County, Wisconsin.



- (b) Describe any record evidence, monument evidence, occupational evidence, testimonial evidence or any other material evidence you considered, and whether the monument was found or placed.

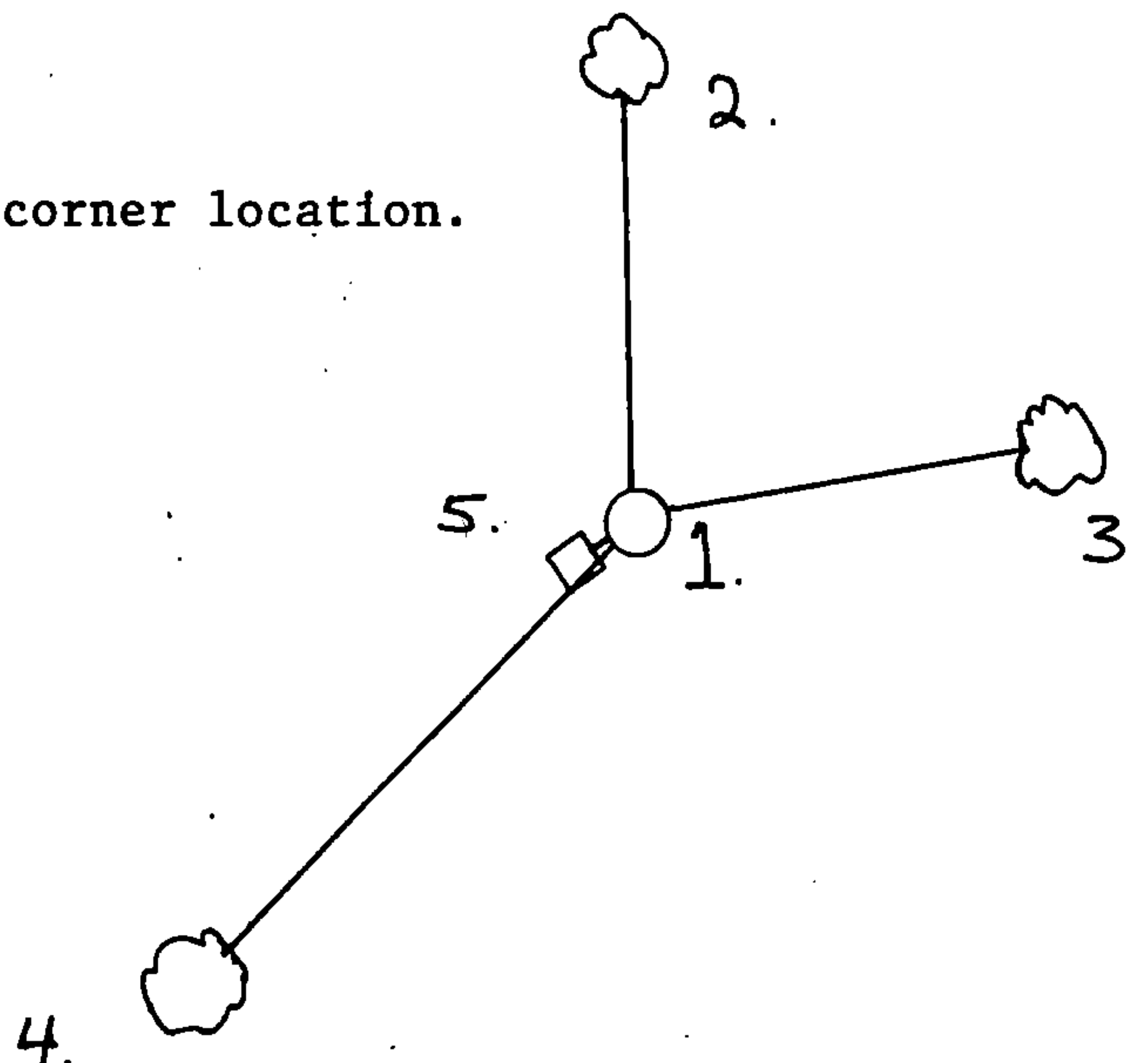
In 1865, James Nowlin set wood post and made the following references:
 Sugar, 8", N.36°W., 8 links (5.28'); Sugar, 8", S.9°W., 10 links (6.60').

In April 1991, Alan Harrison searched area located by survey and could find no remaining evidence of original corner or accessories. Restored corner by proportional measure.

- (c) In the plan view drawing below, provide reference ties to at least 4 witness monuments, or, if the location is within a municipality, to at least 2 witness monuments. (witness monuments shall be made of concrete, natural stone, iron or other equally durable material.)

- (d) Show a plan view drawing depicting the relevant monuments and reference ties which is sufficient in detail to enable accurate relocation of the corner monument if the corner monument is disturbed. Indicate north.

1. 2½"x 36" aluminum monument stamped to identify corner location.
2. Aspen, 3", N.82°E., 10.54-feet
3. Aspen, 3", S.38°W., 23.05 feet
4. Aspen, 3", N.3°W., 13.18 feet
5. Steel Sign Post, Southwest, 1.24 feet



REGISTER'S OFFICE
 Forest County, Wis.

Received for record this 13th day
 of May A.D. 1992 at
11:30 o'clock A.M. and recorded
 in Vol. Casey Restorations
 page J-3

Paul J. Schenkman
 Register of Deeds

(a) Describe any material discrepancy between the location of the corner as restored or reestablished and the location of that corner as previously restored or reestablished by distance and direction. Show the discrepancy on the plan view drawing under (d). above. Show the distances between the corner as previously restored or reestablished and (1) the corner as restored or reestablished, and (2) to at least 2 of the witness monuments shown on the drawing in (d), above.

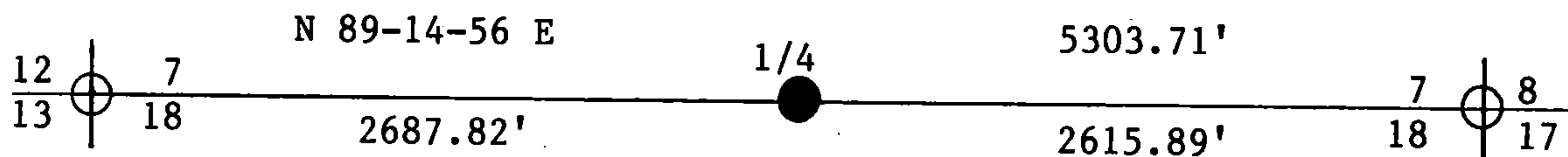
None

(f) Was the corner restored through acceptance of (1) an obliterated evidence location, or, (2) a found perpetuated location ?

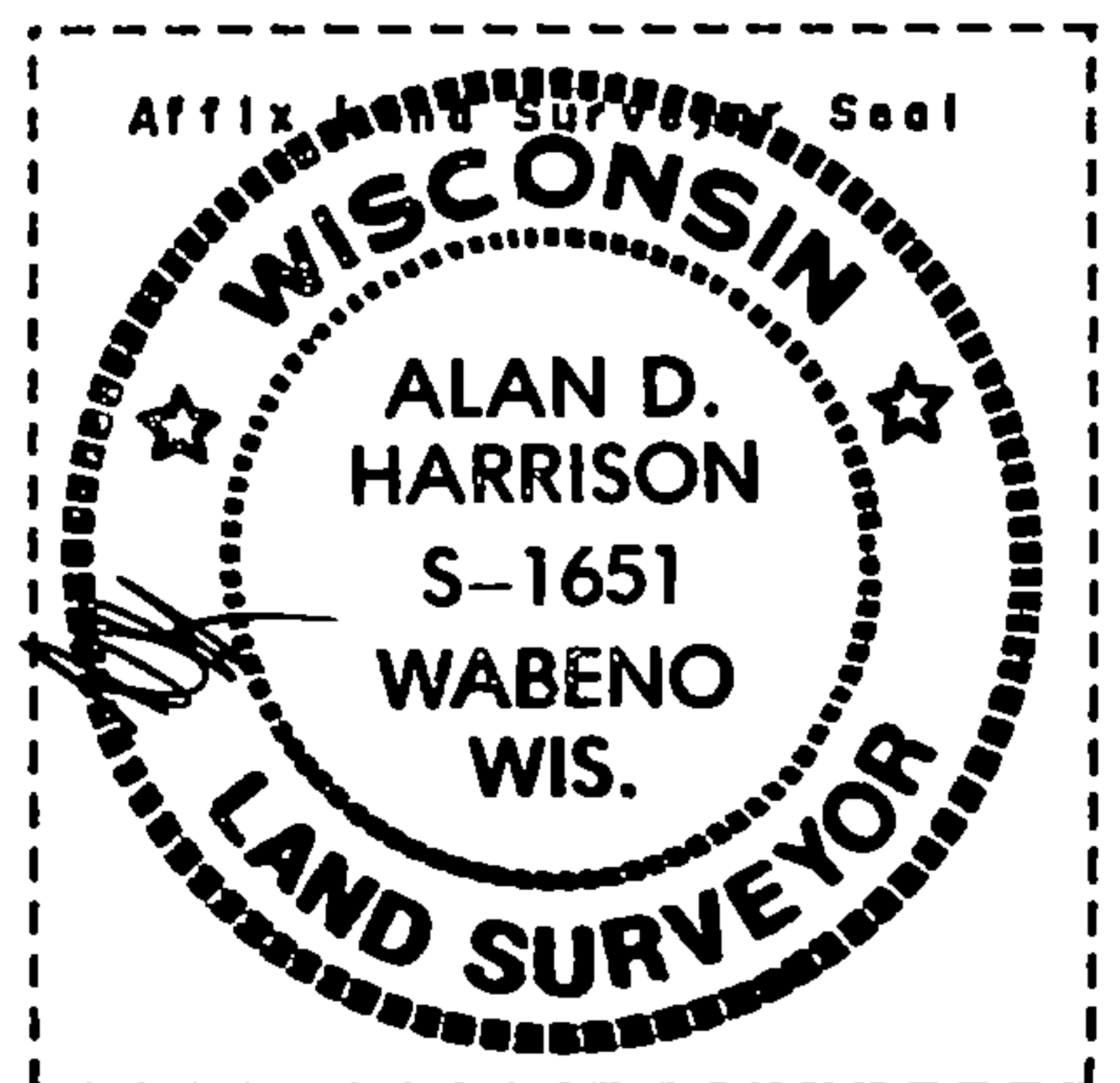
No

(g & h) Was the corner reestablished through lost corner proportionate methods? If so, show the method, including the directions and distances to other public land survey corners used as evidence or used for proportioning in determining the corner location?

Yes



(1) I, Alan D. Harrison
 (type or print name) certify that the corner location shown on this record was determined by me or under my direction and control and that this U.S. Public Land Survey Monument Record is correct and complete to the best of my knowledge and belief.



Alan D. Harrison 4/9/92
 Signature Date

CERTIFICATE READY FOR FILING: Sue Vap
 District Ranger

U.S. PUBLIC LAND SURVEY MONUMENT RECORD

Index No. J-3

State of Wisconsin }
County of Forest } ss.

I, Gary L. Pisoni, do hereby certify that on the 14th day of October, 1993, I found evidence of the North Quarter corner of Section 18 Township 37 North, Range 15 East, Fourth Principal Meridian, as described hereon; and that from this evidence I established a new monument and accessories as described hereon to perpetuate the original location of this corner.

Resident witnesses:

.....
.....
.....

History of original corner establishment:

Original Government survey in 1865 by James L. Nowlin, Deputy Surveyor.

East corrected between Sections 7 & 18 at 40.10 chains, set Quarter Section post, from which the following bear: Sugar, 8", N36°W, 8 Lks., Sugar, 8", S09°W, 10 Lks.

In April 1991, Alan Harrison searched area located by survey and could find no remaining evidence of original corner or accessories. Restored corner by proportional measure and set a 2 1/2" x 36" aluminum monument with an aluminum cap from which the following bear: Aspen, 3", N 82°E, 10.54 feet Aspen, 3", N 03°W, 13.18 feet Aspen, 3", S 38°W, 23.05 feet Steel Sign Post, Southwest, 1.24 feet

Description of corner evidence found:

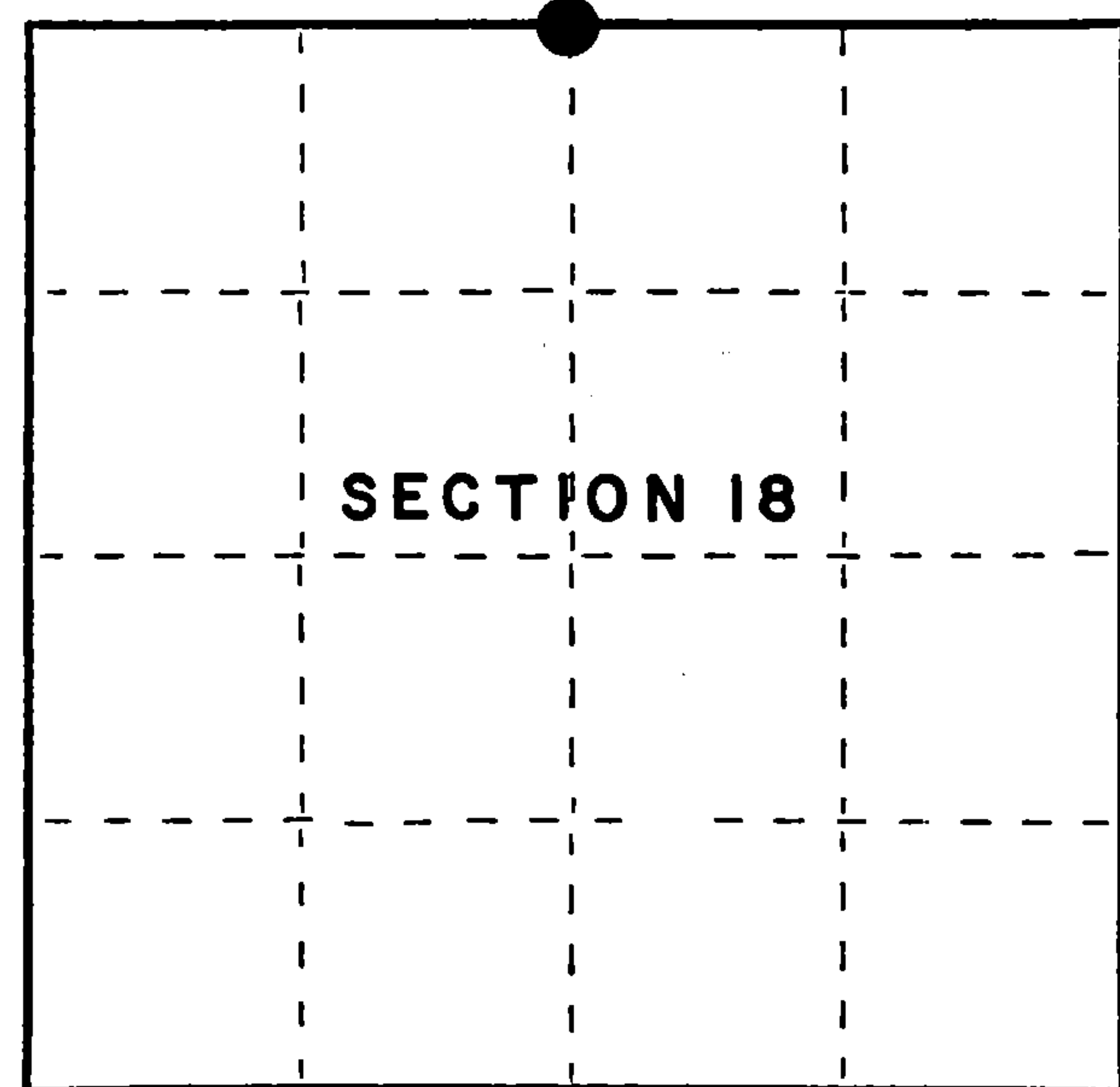
Found monument as described above and the following bearing trees:

Aspen, 5", S 36°W, 23.09 feet
Steel Sign Post, S 25°E, 1.25 feet

Description of monument and accessories I established to perpetuate the original location of this corner.

Blazed and scribed the following new bearing trees:

Aspen 5" N 55°E 17.57 feet
Aspen 6" South 14.25 feet
Aspen 6" S 87°W 19.55 feet



● = Corner monument restored.

Dated at Iron River, MI, Wis, this 5th day of May, 1994

Signature: Gary L. Pisoni Title: Land Surveyor Registration No. S-1634
(County Surveyor, Registered Land Surveyor, or other duly authorized official)

Office of Register of Deeds, County of Forest, I hereby certify that the within instrument was filed in this office for record on the 20th day of March, 1997 at 1:30 o'clock P. M.

(Register of Deeds)

By: [Signature] Deputy

FORM NO. 985-A



Stock No. 26273

158127

43715070020

