

State of Wisconsin }
County of Forest } ss.

I, Gary L. Pisoni, do hereby certify that on the 12th day of December, 1994, I found evidence of the South Quarter corner of Section 3 Township 37, North, Range 15 East, Fourth Principal Meridian, as described hereon; and that from this evidence I established a new monument and accessories as described hereon to perpetuate the original location of this corner.

Resident witnesses:

History of original corner establishment:

Original Government Survey in 1865 by J.L. Nowlin. West corrected between Sections 3 and 10, at 40.45 chains, set Quarter Section Post, from which the following bear; Sugar, 11", N42°E, 10 lks., Sugar, 7", S35°W, 7 lks.

Description of corner evidence found:

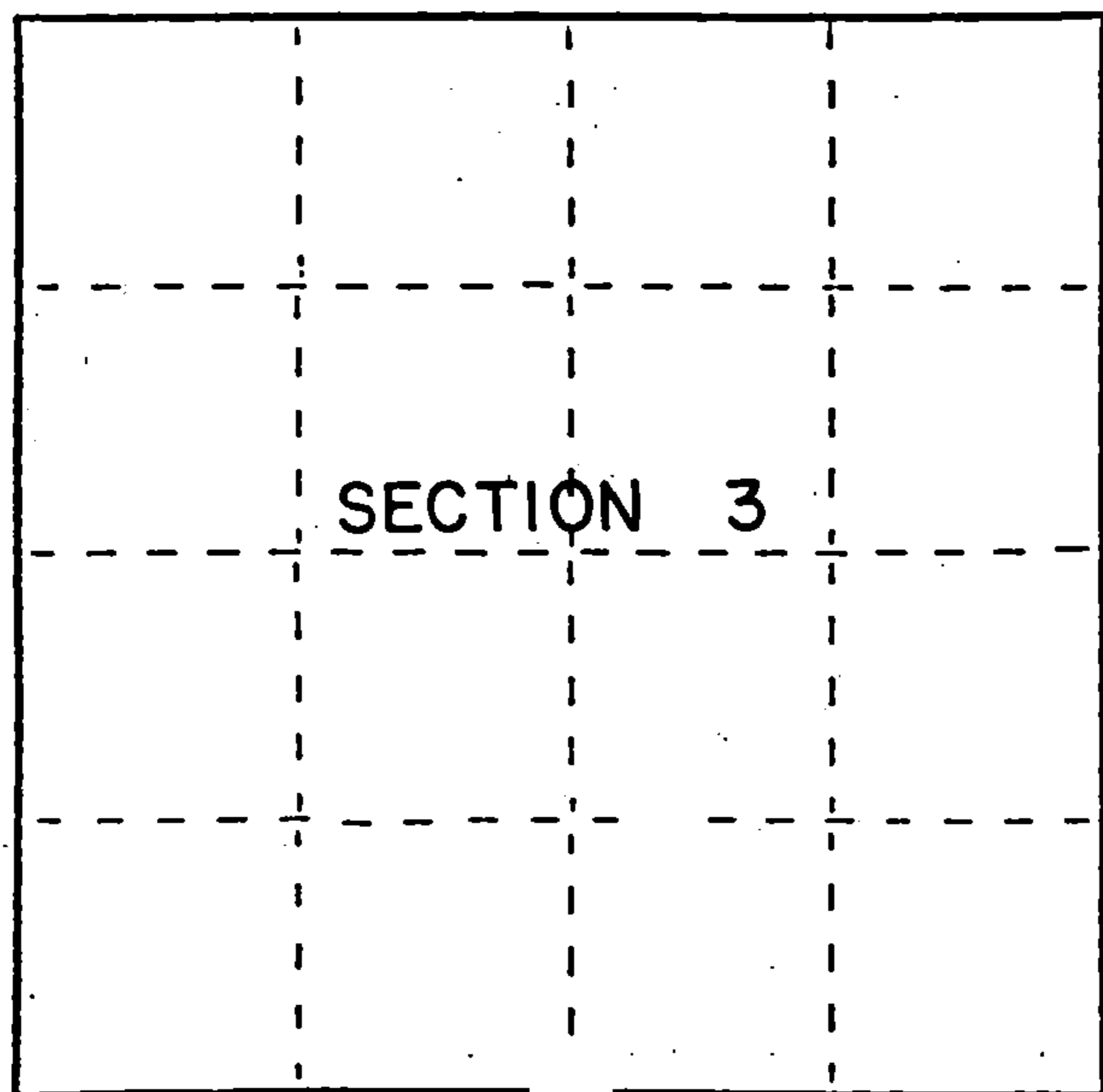
No corner evidence was recovered.

I re-established the corner position at proportionate distance and on line between the Southeast and Southwest Section Corners of Section 3.

Description of monument and accessories I established to perpetuate the original location of this corner.

At the corner position, set a 2 1/2" x 36" aluminum pipe monument with an aluminum cap stamped; T37N R15E, 1/4, S.3, S.10, 1994, S-1634. Blazed and scribed the following new bearing trees;

Red Pine	7"	N45°E	34.45 feet
Red Pine	12"	S02°E	71.62 feet
Red Pine	9"	S36°W	50.72 feet
Red Pine	8"	N20°W	34.55 feet
Steel Sign Post		East	0.90 feet



● = Corner monument restored.

Dated at Iron River, MI, Wis. this 5th day of March, 1995

Signature: Gary L. Pisoni Title: Land Surveyor Registration No. S-1634
(County Surveyor, Registered Land Surveyor, or other duly authorized official)

Office of Register of Deeds, County of Forest, I hereby certify that the within instrument was filed in this office for record on the 20th day of March, 1997 at 1:30 o'clock P. M.

(Register of Deeds)

By: [Signature] Deputy

FORM NO. 985-A

H.C. Miller Company

Stock No. 26273

158126

43715030020

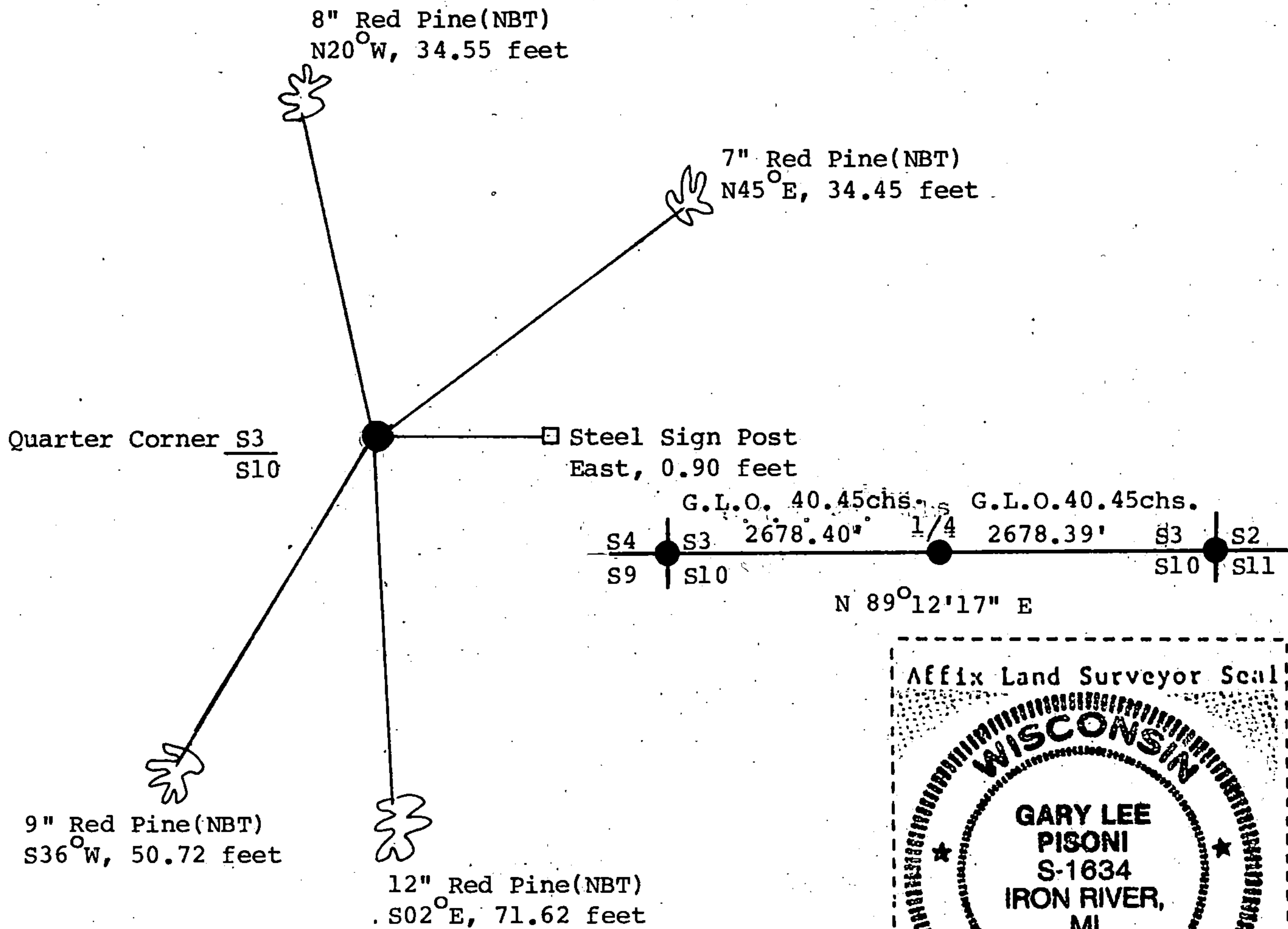
e) Describe any material discrepancy between the location of the corner as restored or reestablished and the location of that corner as previously restored or reestablished by distance and direction. Show the discrepancy on the plan view drawing under (d), above. Show the distances between the corner as previously restored or reestablished and (1) the corner as restored or reestablished, and (2) to at least 2 of the witness monuments shown on the drawing in (d), above.

None

(f) Was the corner restored through acceptance of (1) an obliterated evidence location, or, (2) a found perpetuated location?

(g&h) Was the corner reestablished through lost corner proportionate methods? If so, show the method, including the directions and distances to other public land survey corners used as evidence or used for proportioning in determining the corner location?

Re-established through lost corner proportionate methods.



(i) I, Gary L. Pisoni
(type or print name) certify that the corner location shown on this record was determined by me or under my direction and control and that this U.S. Public Land Survey Monument Record is correct and complete to the best of my knowledge and belief.

Gary L. Pisoni
Signature

9-23-95
Date