

CERTIFIED LAND CORNER RESTORATION
U.S. PUBLIC LAND SURVEY MONUMENT RECORD

History of original corner establishment:

Original Corner established by James L. Nowlin, Gov. Deputy Surveyor in 1865 from which Spruce 10" bears S72E 12 lks, and Spruce 6" N75W 15 lks.

State of Wisconsin }
County of Forest } ss.

I Glen Barker, do hereby certify that on the 2nd day of February, 19 89, I found Est. in Quarter corner of Section 17 & 18 Township 37, North, Range 14 East, Fourth Principal Meridian, as described hereon; and that from this evidence I established a new monument and accessories as described hereon to perpetuate the original location of this corner.

Resident witnesses:

Norm Spiess

Don Broadbridge

Description of corner evidence found:

Recovered an old 4" x 4" Cedar post 7.0' long scribed S18, 1/4, S17, 1/4. A 8" Tamarack bears S9W 13.70', scribed 1/4 S BT.

Corner position has been maintained and accepted by C.P.I. and State of Wisconsin Forestry Divisions for a period of many years.

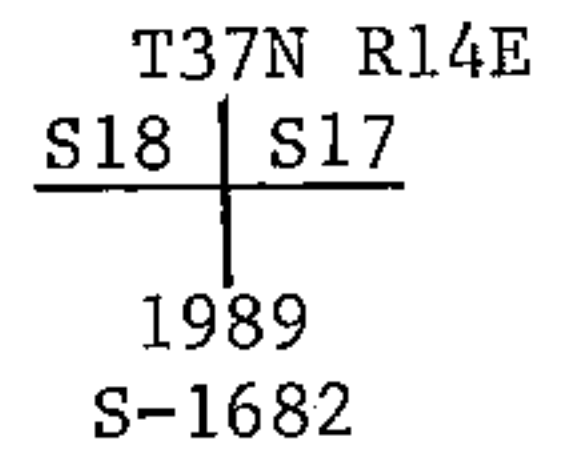
Description of monument and accessories I established to perpetuate the original location of this corner.

Replaced post with a 2 1/4" aluminum Forest County Monument with 3/4" alloy cap stamped.

Monument projects 12" above ground.

Marked NBTs:

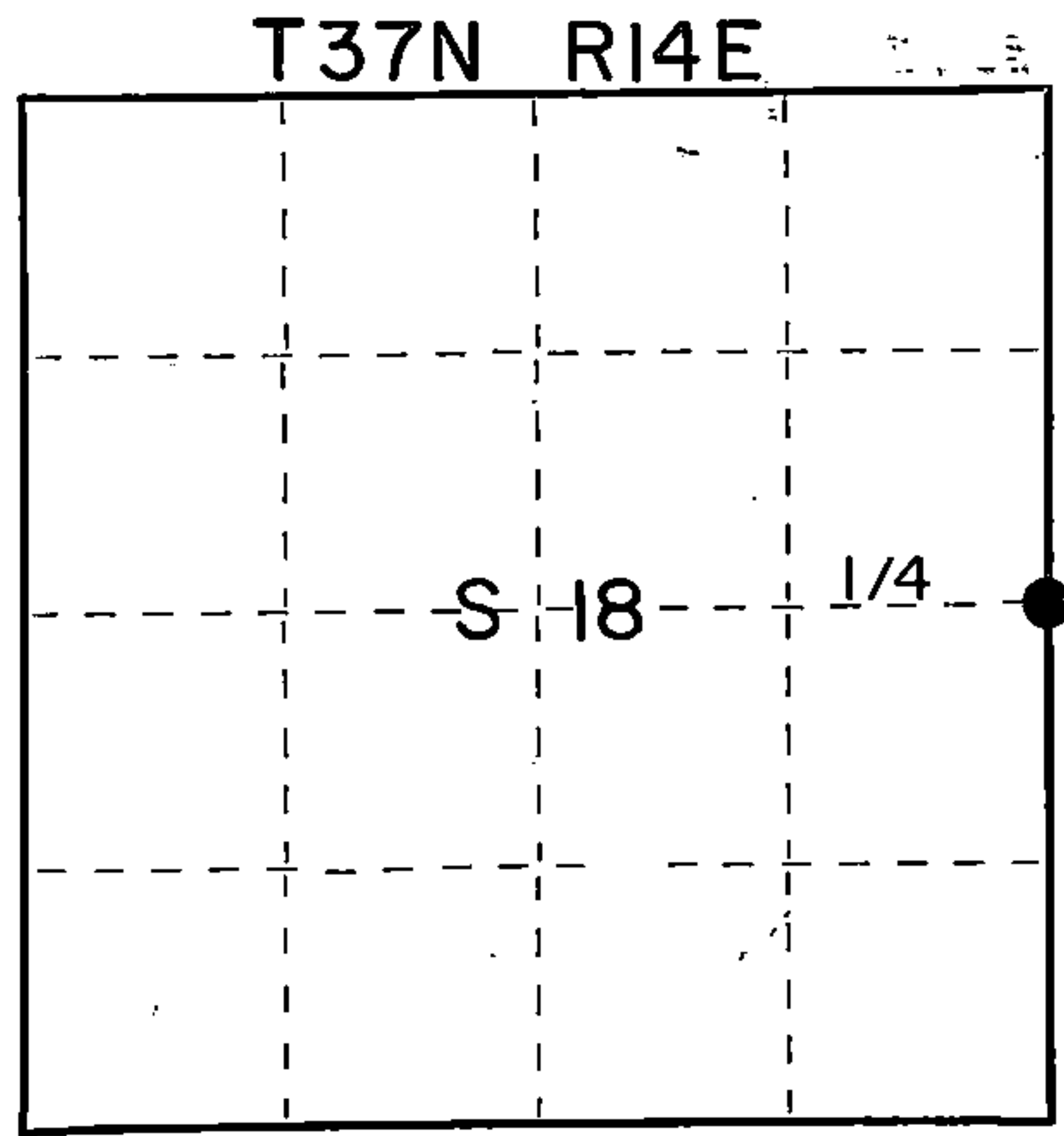
- Tamarack 3" S36E 6.24'
- White Birch 6" S46W 76.00'
- Tamarack 5" S84W 46.89'
- Maple 12" N76W 146.84'



DOCUMENT NUMBER

137132

FORM 985 H. G. MILLER CO., MILWAUKEE



○ = Corner monument restored.

Dated at Rhineland, Wis., this 31st day of March, 19 89.

Signature Glen Barker Title Registered Land Surveyor Registration No. 1682
(County Surveyor, Registered Land Surveyor, or other duly authorized official)

Office of Register of Deeds, County of Forest, I hereby certify that the within instrument was filed in this office for record on the 31st day of March, 19 89 at 10:25 o'clock A. M.

Paul Achenbrenner
(Register of Deeds)

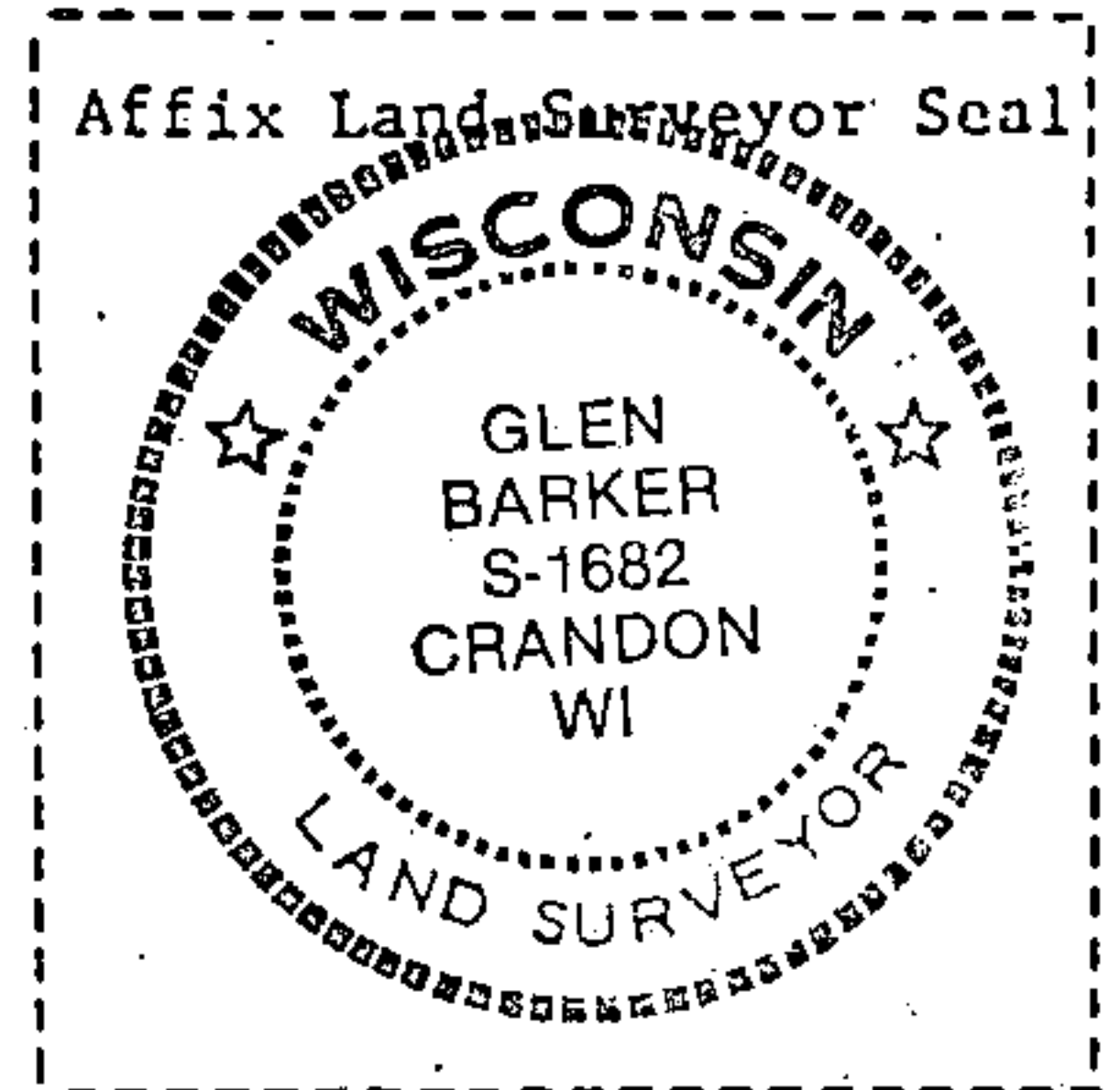
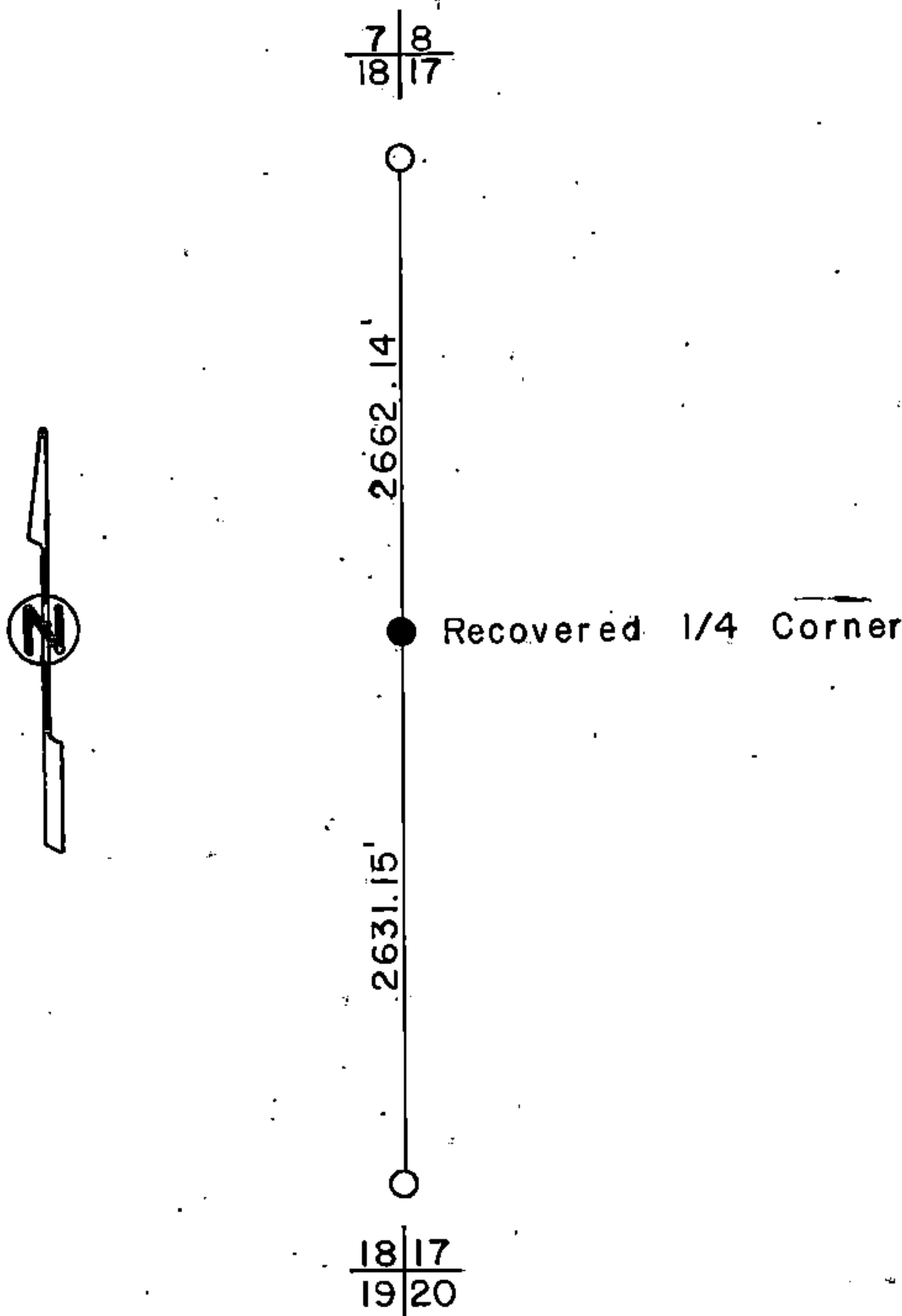
By _____ Deputy

43714182000

Describe any material discrepancy between the location of the corner as restored or reestablished and the location of that corner as previously restored or reestablished by distance and direction. Show the discrepancy on the plan view drawing under (d), above. Show the distances between the corner as previously restored or reestablished and (1) the corner as restored or reestablished, and (2) to at least 2 of the witness monuments shown on the drawing in (d), above.

(f) Was the corner restored through acceptance of (1) an obliterated evidence location, or, (2) a found perpetuated location?

(g&h) Was the corner reestablished through lost corner proportionate methods? If so, show the method, including the directions and distances to other public land survey corners used as evidence or used for proportioning in determining the corner location?



(i) I, Glen Barker
 (type or print name) certify that the corner location shown on this record was determined by me or under my direction and control and that this U.S. Public Land Survey Monument Record is correct and complete to the best of my knowledge and belief.

Glen Barker
 Signature

3/31/89
 Date