

CERTIFIED LAND CORNER RESTORATION

2-1 Index No. 71

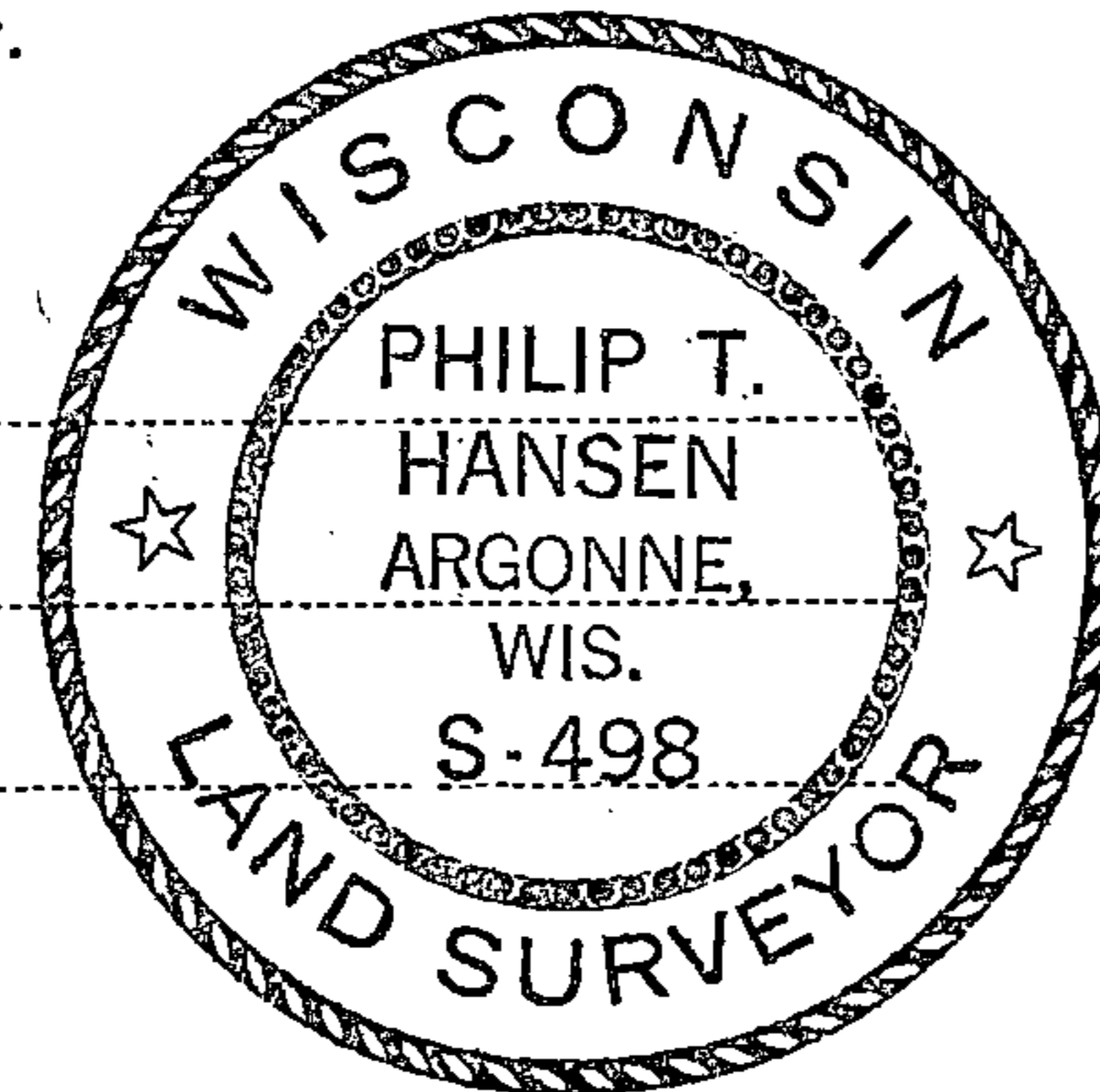
State of Wisconsin }
County of Forest } ss.

I Philip T. Hansen, do hereby certify that on the 22nd day of September, 1975, I found evidence of the Section corner of S36, S31, S6, and S1 Township 36 and 37, North, Range 13 and 14E, Fourth Principal Meridian, as described hereon; and that from this evidence I established a new monument and accessories as described hereon to perpetuate the original location of this corner.

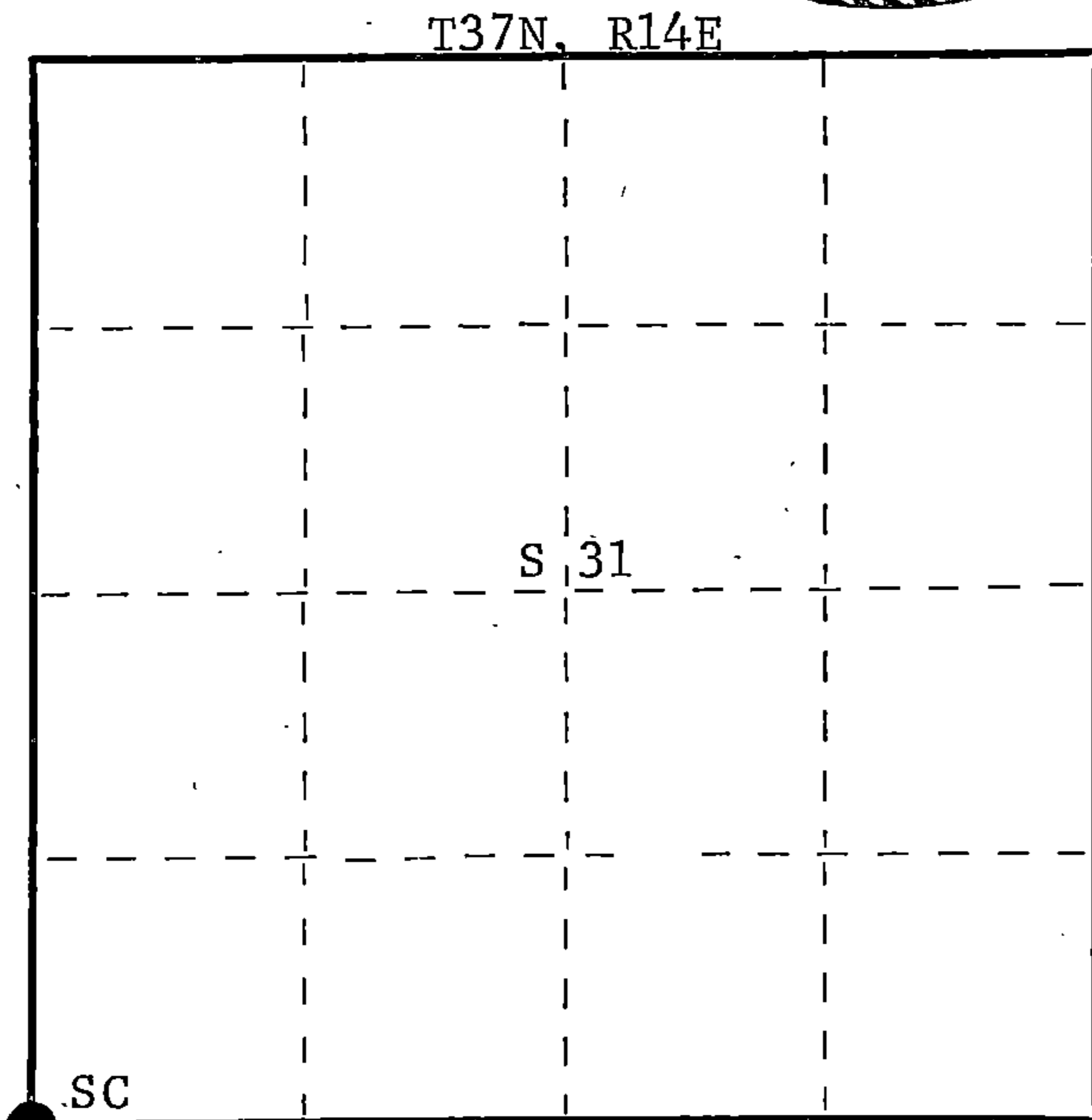
Resident witnesses:

Glen Barker

Jim Claflin



FORM 985 - H. C. MILLER CO., MILWAUKEE



○ = Corner monument restored.

History of original corner establishment:

Original corner established by Alfred Millard, Gov. Deputy Surveyor, in 1858 from which W. pine 24" bears N15°W 18 links, tamarack 20" bears N60°E 46 links, white pine 18" bears S68°E 27 links, white pine 22" bears S68°W 100 links. This corner recovered by C.E. Walker, County Surveyor, in 1938. No record of his notes. No record of BT's established.

Description of corner evidence found:

Corner recovered, 2-1/2" iron pipe with brass cap stamped. This corner sets 15' from center line of town road and had been hit with snowplow which bent it over. Not usable for permanent post. No OBT's were recovered.

Forest County Survey

T 37N R 13
36N 14

Sec. 36 | 31
Cor. 1 | 6
C.E. Walker
9/7/38

Description of monument and accessories I established to perpetuate the original location of this corner.

Replaced iron pipe with a 1-1/2" OD x 18" iron pipe which was driven in flush with the ground.

Set a 2-1/2" x 30" Berntsen, A-1 federal monument, aluminum pipe with magnet installed in cap and base as a witness corner 20 links west of true corner. This post projects 6" above ground. Cap stamped.

S498
T37N

NBT White spruce 11" N87°E 54.3 links scribed SC BT. Witness corner and NBT painted blue.

W C
R13E 36 | 31 R14E
1 | 6
T36N
W 20 links
19 75

Dated at Argonne, Wis., this 26th day of September, 1975.

Signature Philip T. Hansen Title Registered Land Surveyor Registration No. S-498
(County Surveyor, Registered Land Surveyor, or other duly authorized official)

Office of Register of Deeds, County of Forest, I hereby certify that the within instrument was filed in this office for record on the 30th day of September, 1975 at 3:15 o'clock P. M.

Eugene Staszny
(Register of Deeds)
By _____ Deputy

DOCUMENT NUMBER **107880**

43713360000

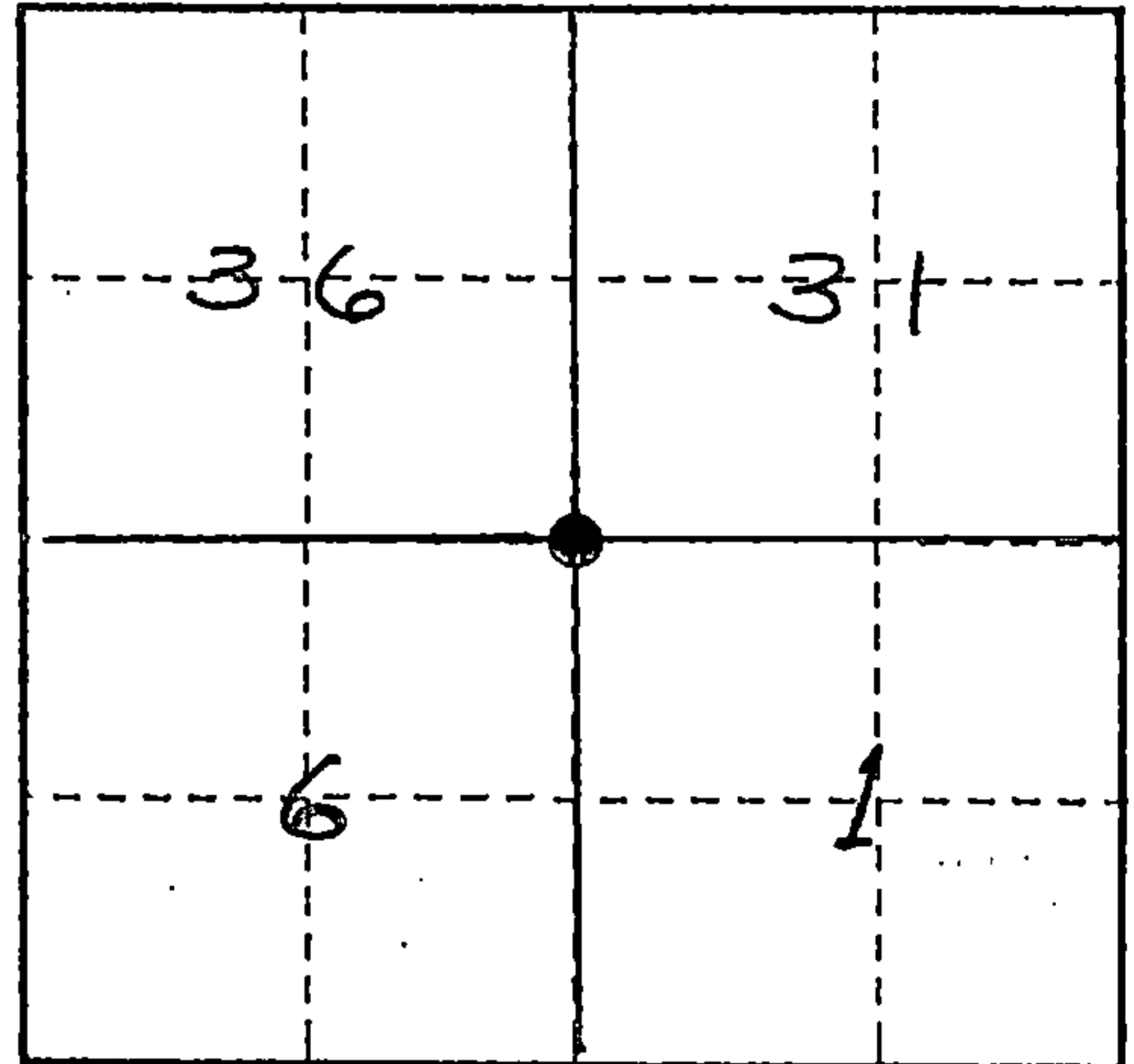
U. S. PUBLIC LAND SURVEY MONUMENT RECORD

INSTRUCTIONS:

This record shall show the location of the corner and shall include all of the following nine elements (a through i).

- (a) Identify the corner by reference to the U.S. public land survey system.
- = Corner monument restored.

Corner common to Sections 1, 6, 31 & 36, T37-36N, R13-14E



- (b) Describe any record evidence, monument evidence, occupational evidence, testimonial evidence or any other material evidence you considered, and whether the monument was found or placed.

Original survey in 1858 by Alfred Millard, Deputy Surveyor.

Original Bearing Trees:

- W. Pine 24", N15°W - 18 links
- W. Pine 18", S68°E - 27 links
- Tamarack 20", N60°E - 46 links
- W. Pine 22", S68°W - 100 links

1938- Corner recovered and monumented by C.E. Walker, County Surveyor. No record of his notes.

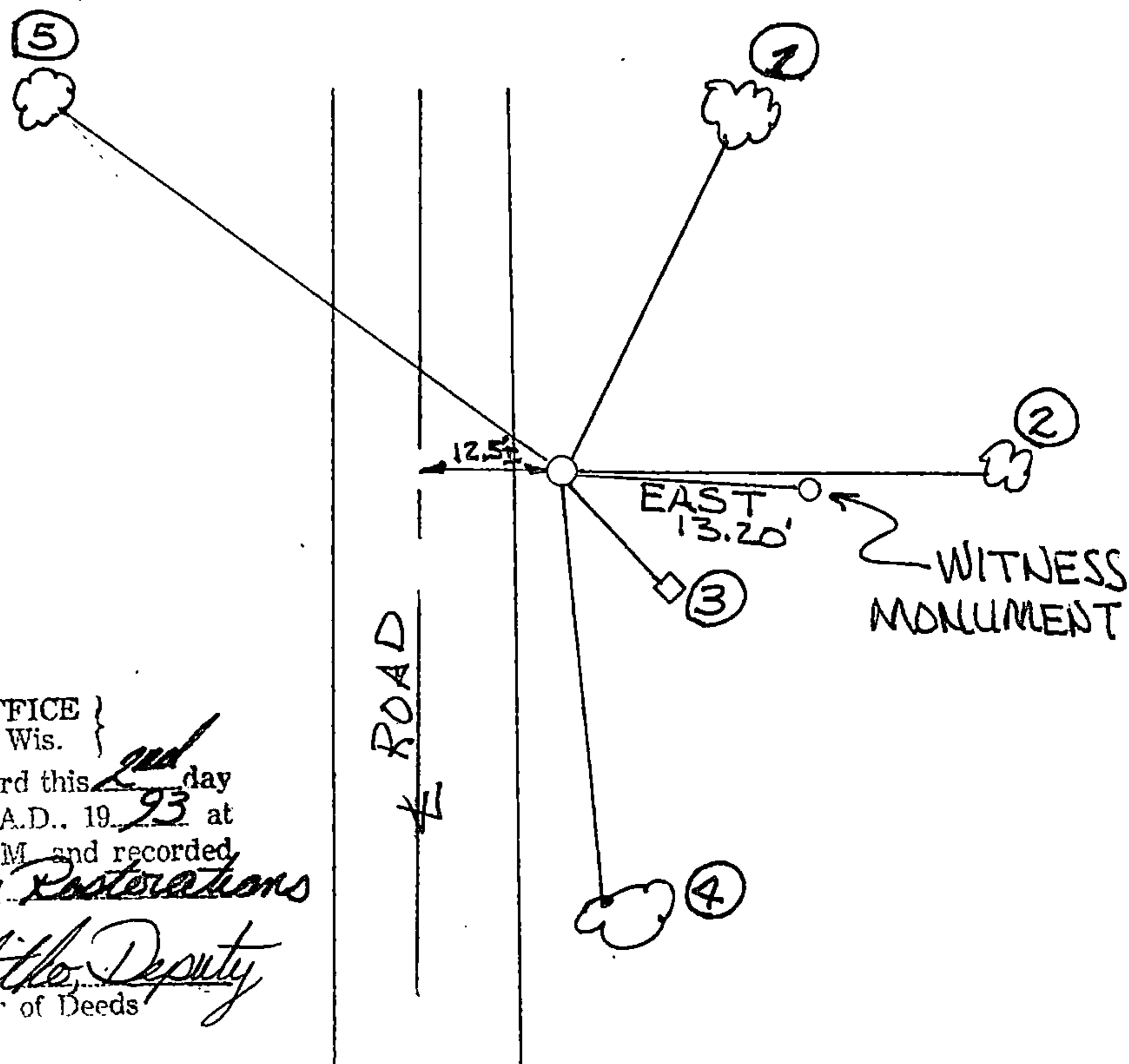
1975- Corner position monumented and recorded by Philip T. Hansen, S-498 on September 30, 1975, document No. 107880. He recovered a 2 1/2" iron pipe set by C.E. Walker in 1938, bent, and reset a 1 1/2" O.D. iron pipe and also set a 2 1/2" x 30" Bernsten monument as a witness corner.

1993- I found both of Hansen's corners to be in good condition. I upgraded the corner with new accessories as shown below.

- (c) In the plan view drawing below, provide reference ties to at least 4 witness monuments, or, if the location is within a municipality, to at least 2 witness monuments. (witness monuments shall be made of concrete, natural stone, iron or other equally durable material.)

- (d) Show a plan view drawing depicting the relevant monuments and reference ties which is sufficient in detail to enable accurate relocation of the corner monument if the corner monument is disturbed. Indicate north.

- 1- Balsam 12", N32°E-32.87'
- 2- Spruce 20", N87°E-36.62' (existing B.T.)
- 3- Steel sign post - S.E.-3.05'
- 4- Spruce 14", S17°E-33.21'
- 5- R. Pine 3", N59°W-68.14'



REGISTER'S OFFICE }
 Forest County, Wis. }
 Received for record this 2nd day
 of June A.D., 1993 at
12 o'clock P.M. and recorded
 in Vol. Copy Restorations
 page 1
Chad Chittlo Deputy
 Register of Deeds

4-3713360004

(e) Describe any material discrepancy between the location of the corner as restored or reestablished and the location of that corner as previously restored or reestablished by distance and direction. Show the discrepancy on the plan view drawing under (d). above. Show the distances between the corner as previously restored or reestablished and (1) the corner as restored or reestablished, and (2) to at least 2 of the witness monuments shown on the drawing in (d), above.

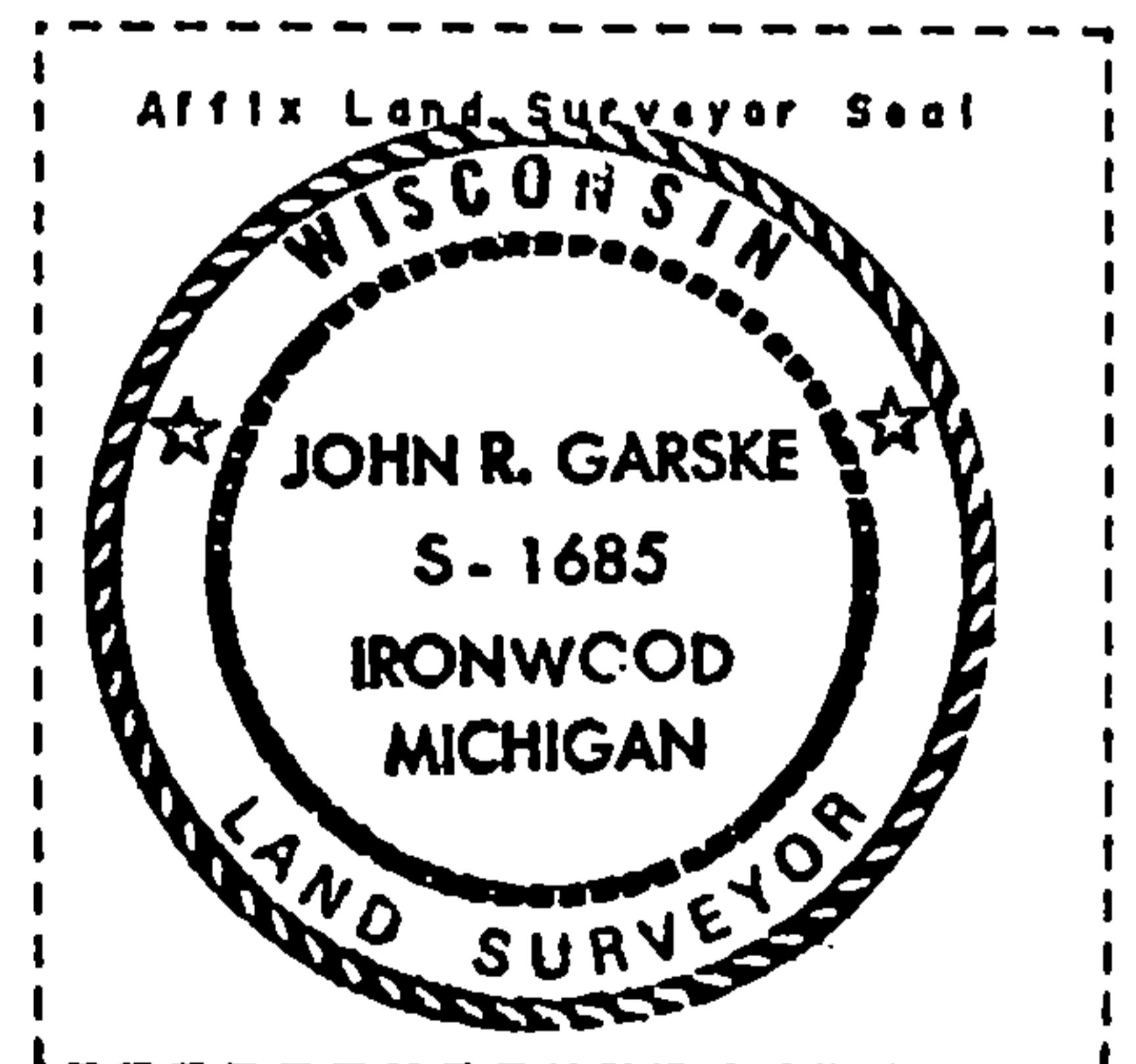
None

(f) Was the corner restored through acceptance of (1) an obliterated evidence location, or, (2) a found perpetuated location?

(2) A found perpetuated location.

(g & h) Was the corner reestablished through lost corner proportionate methods? If so, show the method, including the directions and distances to other public land survey corners used as evidence or used for proportioning in determining the corner location?

No



(1) I, John R. Garske, S-1685

(type or print name) certify that the corner location shown on this record was determined by me or under my direction and control and that this U.S. Public Land Survey Monument Record is correct and complete to the best of my knowledge and belief.

John R. Garske 3/19/93
Signature Date

CERTIFICATE READY FOR FILING:

Sue Vaj
District Ranger