

Document Number

187589

REGISTER'S OFFICE }  
Forest County, Wis.

Received for record this 8<sup>th</sup> day  
of June A.D., 2005 at  
3:00 o'clock P.M. and recorded  
in Vol. Corner Restoration  
page X-17

Kay Swanson, Deputy  
Register of Deeds

U.S. PUBLIC LAND SURVEY MONUMENT RECORD

(As Required by WI Adm. Code)

History of original corner establishment and subsequent restorations and descriptions of any record, monument, occupational, testimonial or other evidence considered:

1865 - J. L. Nowlin, set quarter corner section post and made the following B.T.'s:

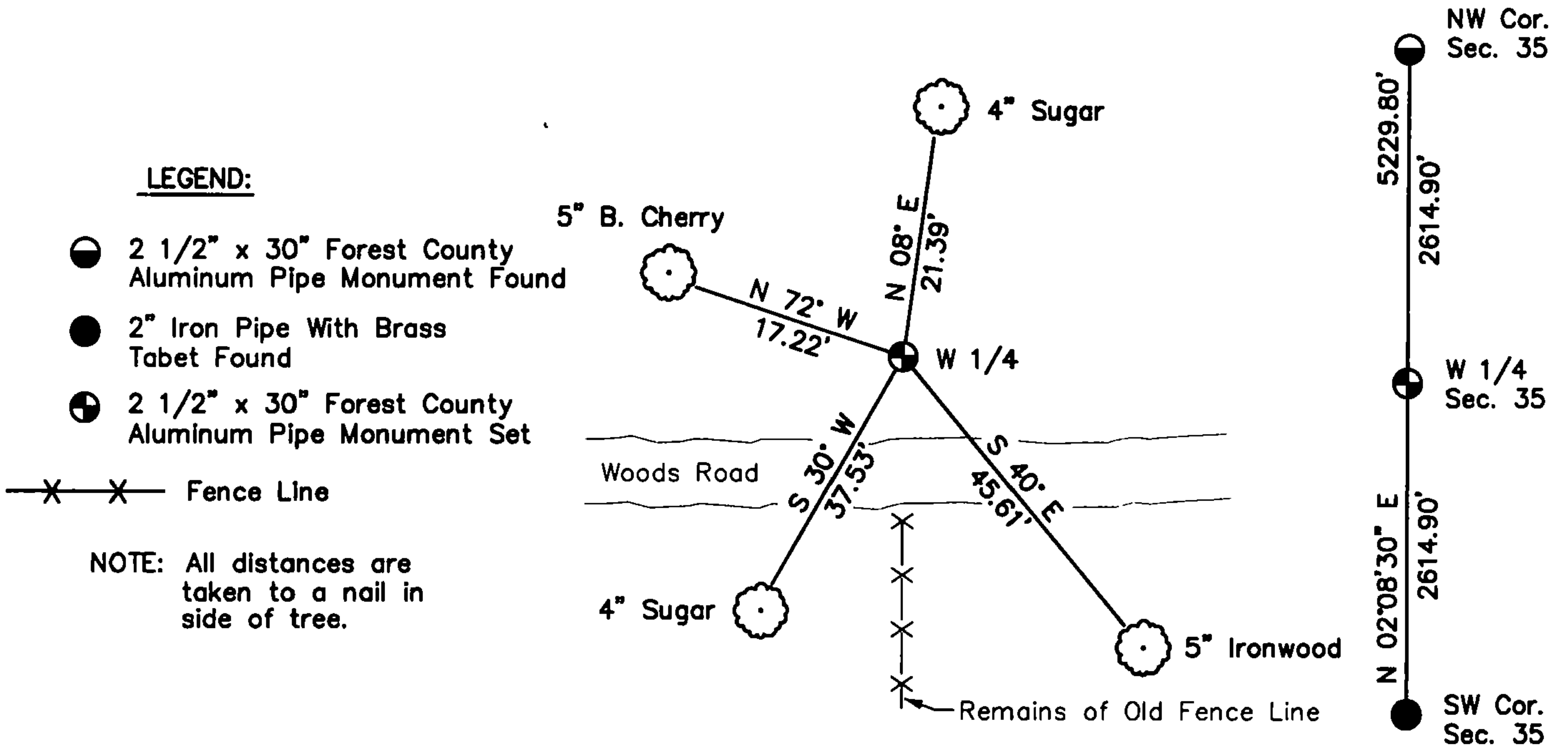
- Birch, 16", N 33° W, 60 lks., 39.60 feet.
- Birch, 16", N 13° W, 15 lks., 9.90 feet.

2005 - No evidence of the original corner or accessories were recovered. No other corner evidence was found. I reestablished the corner position at proportionate distance and on line between the Northwest and Southwest Section Corners of Section 35. Set a 2 1/2" x 30" Forest County Aluminum Pipe Monument for Quarter corner.

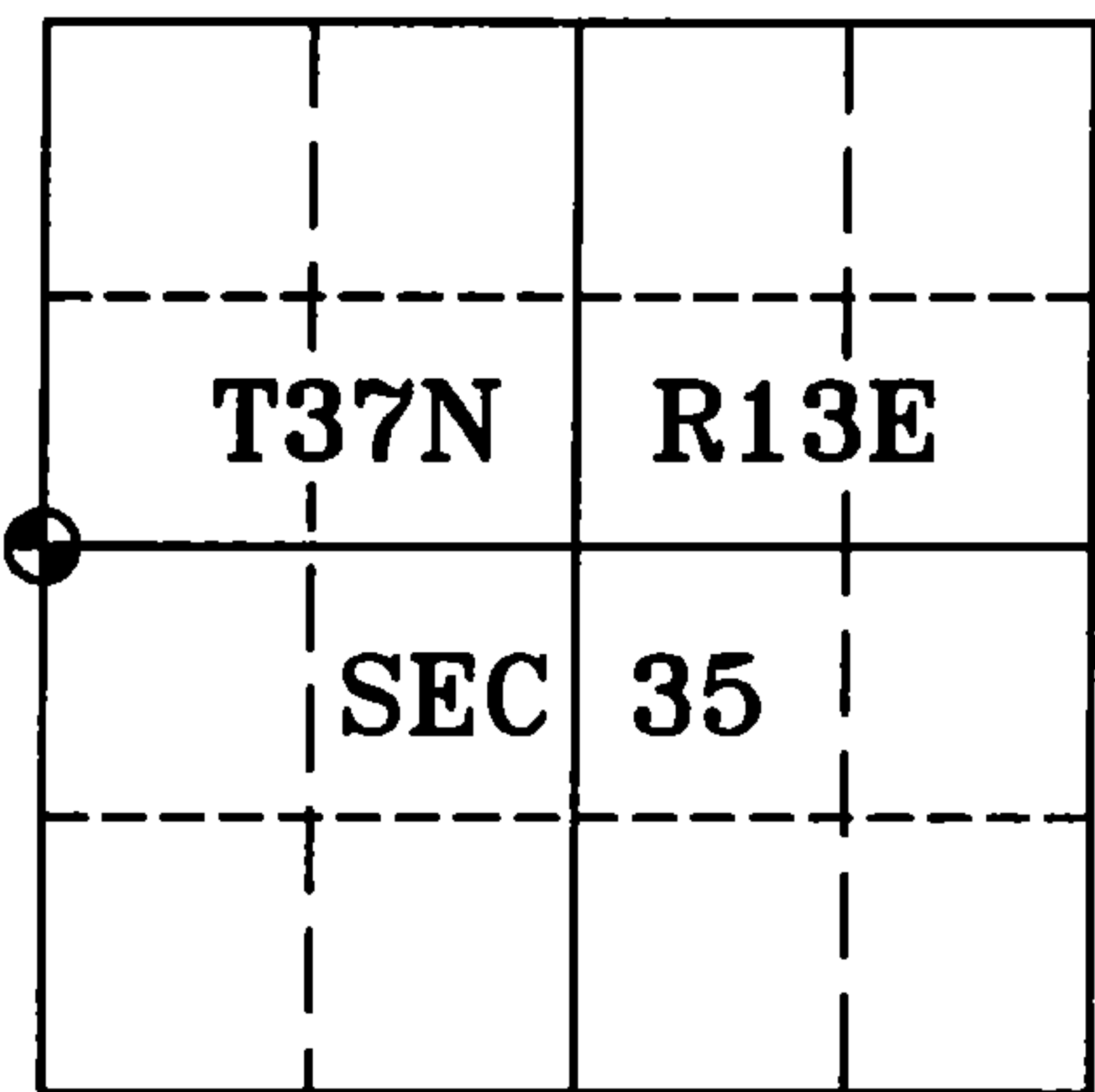
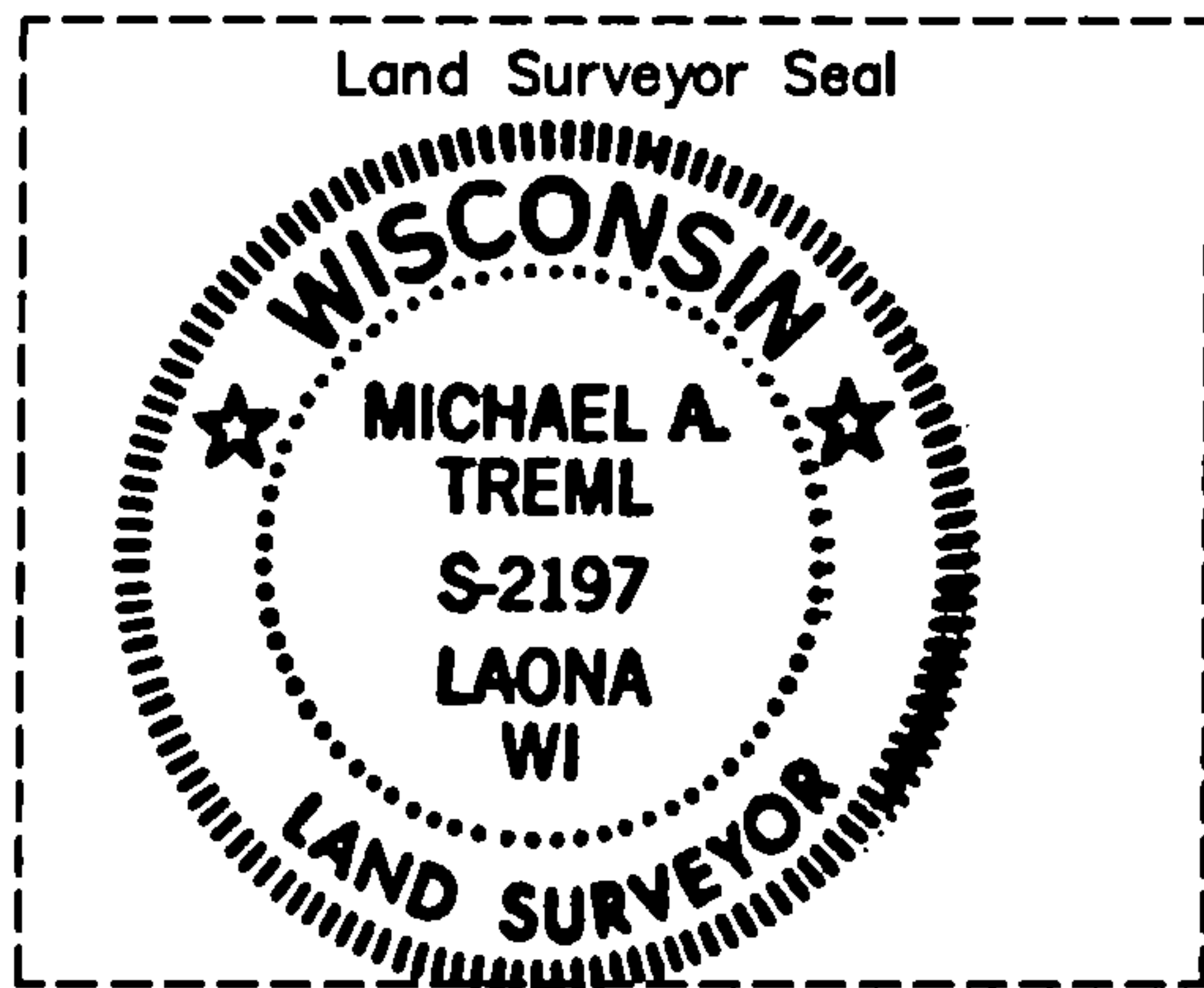
Corner was: (Check All That Apply)

- Restored through acceptance of an obliterated evidence location.
- Restored through acceptance of a found perpetuated location.
- Considered a lost corner and reestablished through lost corner proportionate methods (include a plan view drawing showing distances and directions to other Public Land Survey Corners used for proportioning and determining the corner location).
- Restored or reestablished in a location that differs from a previous restoration or reestablishment (include a plan view drawing and indicate what was set and/or found).

Describe the monument and accessories used to perpetuate the location of this corner (include a plan view drawing and indicate what was set and/or found).



Sketch Not To Scale



I, Michael A. Tremml, RLS  
(type or print name) certify that the corner location shown on  
this record was determined by me or under my direction and  
control and that this U.S. Public Land Survey Monument Record  
is correct and complete to the best of my knowledge and belief.

Michael A. Tremml 4/20/05  
Signature Date

The West Quarter corner of  
Section 35 T. 37 N., R. 13 E.  
Forest County, WI

Index No. X-17

43713342000

X-17