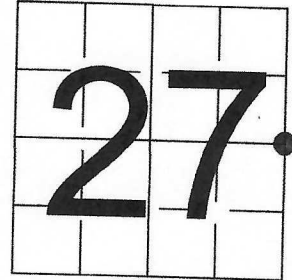


U S PUBLIC LAND SURVEY MONUMENT RECORD - ADDENDUM

NOTE: This form is intended and designed to fulfill all requirements of Wisconsin Administrative Code, Chapter A-E 7.08 U.S. Public Land Survey Monument Record (3) (a-i)

A-E 7.08(3)(a) Identity of corner
EAST 1/4 CORNER OF SECTION 27
TOWNSHIP 37 NORTH
RANGE 13 EAST OF THE 4TH PM
TOWN OF ARGONNE,
COUNTY OF FOREST

WISCRS - FOREST COUNTY
N: 602,868.460 USft (XXX,XXX.XX)
E: 851,747.046 USft (XXX,XXX.XX)
Datum: NAD83 (2011)
GNSS Method RTN - Direct
GNSS Control WISCORS VRS



The coordinate value shown has been verified by the average of two or more GPS observations at a markedly different time. Values shown in parenthesis, are previously published measurements.

A-E 7.08(3)(b) Description of any record evidence, monument evidence, occupational evidence, testimonial evidence, or any other material evidence.

Original Surveyor: James L. Nowlin

Date of Original Survey Commenced: June 13, 1865
 Completed: June 24, 1865

Original Accessories:
Tamarac 5 S 67° E 20 lks
Tamarac 4 N 80° W 25 lks

See Previous Monument Record: Index No. T-17 - July 1, 2004 - Surveyor 2197 - Michael A. Tremi

May 9, 2004, 2006 - Surveyor 2197 - Michael A. Tremi - indicates the position as "set railroad spike" on Record #371326-20040509.
January 4, 2006 - Surveyor 2197 - Michael A. Tremi - indicates the position as "existing railroad spike" on CSM 189971.
July 14, 2006 - Surveyor 1910 - Matthew E. Hoglund - indicates the position as "railroad spike found" on Record #371327-20060714.
December 05, 2011 - Surveyor 2343 - Kevin P. Bixby - indicates the position as "set P.K. Nail" on Record #371335-20111205.
June 07, 2015 - Surveyor 2656 - Jeffrey L. DeMuth - indicates the position as "P.K. nail, found" on Record #371326-20150707.
September 14, 2018 - Surveyor 2656 - Jeffrey L. DeMuth - indicates the position as "P.K. nail, found" on Record #371326-20180914.
June 14, 2019 - Surveyor 1523 - Todd J. Loftus - indicates the position as "found P.K. nail" on Record #371327-20190614.

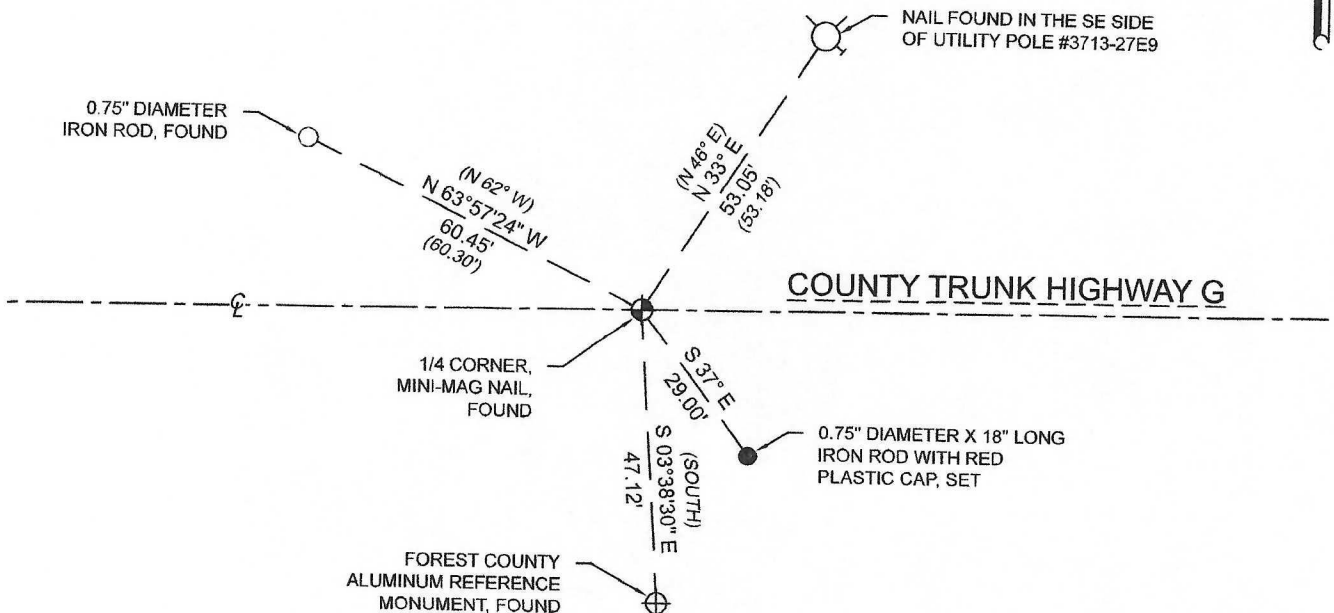
A-E 7.08(3)(f) Whether the corner was restored through acceptance of an obliterated location or a found perpetuated location.

November 30, 2021 - I found a mini - mag nail near the centerline of County Trunk Highway G.
I also found 3 of the reference monuments as shown on U.S. Public Land Survey Monument Record T-17.

I accept this monument as a FOUND PERPETUATED LOCATION OF THE CORNER and established 1 new witnesses as shown below.

A-E 7.08(3)(c)(d)(e)(h) Plan view of corner with references to at least 4 witness monuments. If in disagreement with previously established corner, show the distances between the two corners and also indicate the ties to the disputed. The directions and distances to other public land survey corners used as evidence or used for determining the corner location.

BEARINGS LISTED TO THE NEAREST
SECOND ARE REFERENCED TO WISCONSIN
COUNTY COORDINATE REFERENCE
SYSTEM - FOREST COUNTY ZONE.
ALL OTHER BEARINGS ARE MAGNETIC.

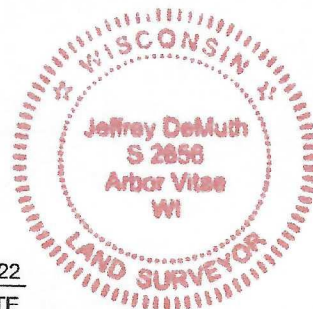


A-E 7.08(3)(i) I, Jeffrey L. DeMuth, Professional Land Surveyor No. S-2656, hereby certify that the corner location on this record was determined by me or under my direction and control and that this U.S. Public Land Survey Monument Record is correct and complete to the best of my knowledge, and belief

SIGNATURE

August 12, 2022

DATE



43713272000



Document Number

Stock No. 26273

184224

U.S. PUBLIC LAND SURVEY MONUMENT RECORD

(As Required by WI Adm. Code)

History of original corner establishment and subsequent restorations and descriptions of any record, monument, occupational, testimonial or other evidence considered:

1865 - James Nowlin, set original corner post and made the following B.T.'s:

Tam., 5", S 67° E, 20 lks., 13.20 feet.

Tam., 4", N 80° W, 25 lks., 16.50 feet.

2002 - Devon Vanden Heuvel, RLS set railroad spike for quarter corner on survey map dated 06/18/02, project #366.

2004 - Michael A. Tremi, RLS found no evidence of original corner or railroad spike.

I restored corner with the dimensions from Vanden Heuvel's survey map.

Corner falls in the centerline of County Highway "G" and on N-S fenceline to South.

I set a railroad spike for the quarter corner and reference monument (R.M.).

Corner was: (Check All That Apply)

- ☒ Restored through acceptance of an obliterated evidence location.
☐ Restored through acceptance of a found perpetuated location.
☐ Considered a lost corner and reestablished through lost corner proportionate methods (include a plan view drawing showing distances and directions to other Public Land Survey Corners used for proportioning and determining the corner location).
☐ Restored or reestablished in a location that differs from a previous restoration or reestablishment (include a plan view drawing and indicate what was set and/or found).

Describe the monument and accessories used to perpetuate the location of this corner (include a plan view drawing and indicate what was set and/or found).

LEGEND:

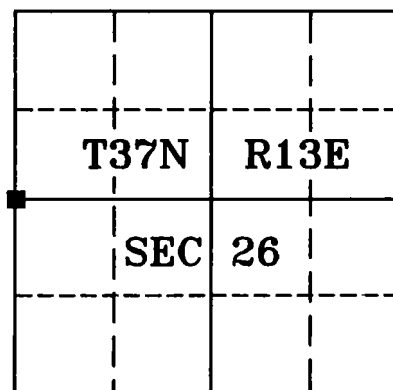
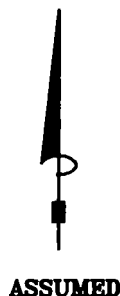
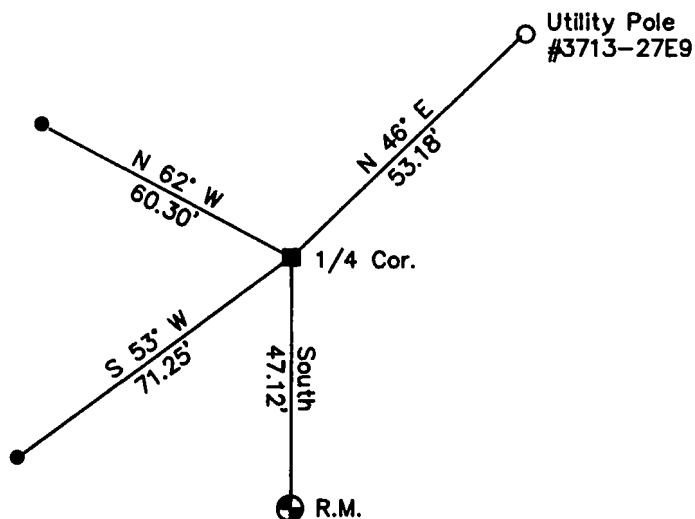
- Railroad Spike Set
 ⊕ 2" X 30" Forest County Aluminum Pipe Monument Set
 ● 3/4" X 24" Rebar Set

REGISTER'S OFFICE

Forest County, Wis.

Received for record this 2nd day
 of July A.D., 2004 at
3:25 o'clock P.M. and recorded
 in Vol. Corner Restorations
 page T-17

Kay Swanson, Deputy
 Register of Deeds



I, Michael A. Tremi, RLS
 (type or print name) certify that the corner location shown on
 this record was determined by me or under my direction and
 control and that this U.S. Public Land Survey Monument Record
 is correct and complete to the best of my knowledge and belief.

Michael A. Tremi 7/1/04
 Signature Date

The West Quarter corner of
 Section 26 T. 37 N., R. 13 E.
 Forest County, WI

Index No. T-17

43713272000

T-17