

# U S PUBLIC LAND SURVEY MONUMENT RECORD - ADDENDUM

NOTE: This form is intended and designed to fulfill all requirements of Wisconsin Administrative Code, Chapter A-E 7.08 U.S. Public Land Survey Monument Record (3) (a-i)

A-E 7.08(3)(a) Identity of corner  
SOUTHEAST CORNER OF SECTION 27  
TOWNSHIP 37 NORTH  
RANGE 13 EAST OF THE 4TH PM  
TOWN OF ARGONNE,  
COUNTY OF FOREST

WISCRS - FOREST COUNTY  
N: 600,252.246 USft (XXX,XXX.XX)  
E: 851,979.467 USft (XXX,XXX.XX)  
Datum: NAD83 (2011)  
GNSS Method RTN - Direct  
GNSS Control WISCRS VRS



The coordinate value shown has been verified by the average of two or more GPS observations at a markedly different time. Values shown in parenthesis, are previously published measurements.

A-E 7.08(3)(b) Description of any record evidence, monument evidence, occupational evidence, testimonial evidence, or any other material evidence.

Original Surveyor: James L. Nowlin

Date of Original Survey    Commenced:    June 13, 1865  
   Completed:    June 24, 1865

Original Accessories:  
Birch                      8            N 69° W            160 lks  
Sugar                     10           S 11° W            140 lks

See Previous Monument Record: Index No. V-17 - April 19, 2005 - Surveyor 2197 - Michael A. Trembl

May 14, 2010 - Surveyor 2343 - Kevin P. Bixby - indicates the position as "found Forest County aluminum monument" on Record #371334-20100514.

December 05, 2011 - Surveyor 2343 - Kevin P. Bixby - indicates the position as "existing Forest County monument" on Record #371335-20111205.

June 07, 2015 - Surveyor 2656 - Jeffrey L. DeMuth - indicates the position as "2" Alum. Mon." on Record #371326-20150707.

A-E 7.08(3)(f) Whether the corner was restored through acceptance of an obliterated location or a found perpetuated location.

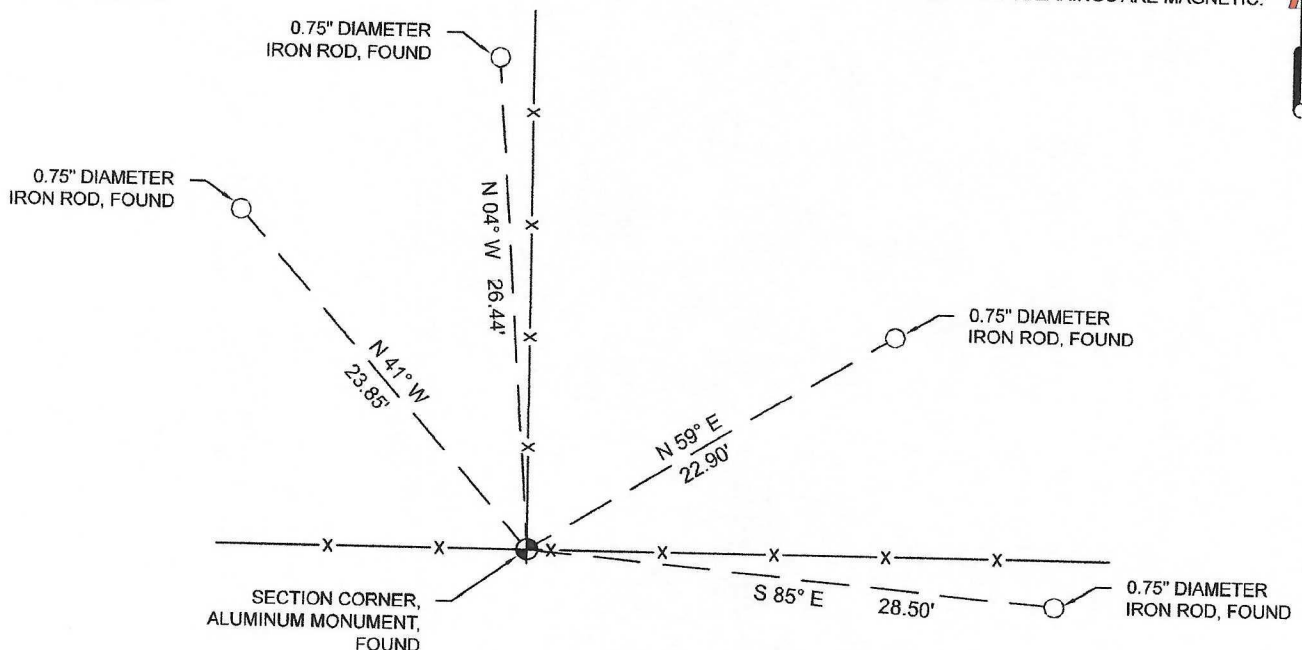
November 30, 2021 - I found a 2" diameter aluminum pipe monument with a 2 1/2" aluminum tablet affixed to the top & stamped to identify the corner.

I also found all of the reference monuments as shown on U.S. Public Land Survey Monument Record V-17.

I accept this monument as a FOUND PERPETUATED LOCATION OF THE CORNER and established 0 new witnesses as shown below.

A-E 7.08(3)(c)(d)(e)(h) Plan view of corner with references to at least 4 witness monuments. If in disagreement with previously established corner, show the distances between the two corners and also indicate the ties to the disputed. The directions and distances to other public land survey corners used as evidence or used for determining the corner location.

BEARINGS LISTED TO THE NEAREST  
SECOND ARE REFERENCED TO WISCONSIN  
COUNTY COORDINATE REFERENCE  
SYSTEM - FOREST COUNTY ZONE.  
ALL OTHER BEARINGS ARE MAGNETIC.



A-E 7.08(3)(i) I, Jeffrey L. DeMuth, Professional Land Surveyor No. S-2656, hereby certify that the corner location on this record was determined by me or under my direction and control and that this U.S. Public Land Survey Monument Record is correct and complete to the best of my knowledge, and belief

SIGNATURE

August 12, 2022

DATE



43713270000

Document Number

187588

U.S. PUBLIC LAND SURVEY MONUMENT RECORD

(As Required by WI Adm. Code)

History of original corner establishment and subsequent restorations and descriptions of any record, monument, occupational, testimonial or other evidence considered:

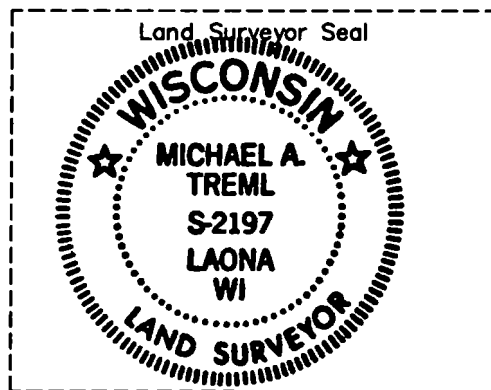
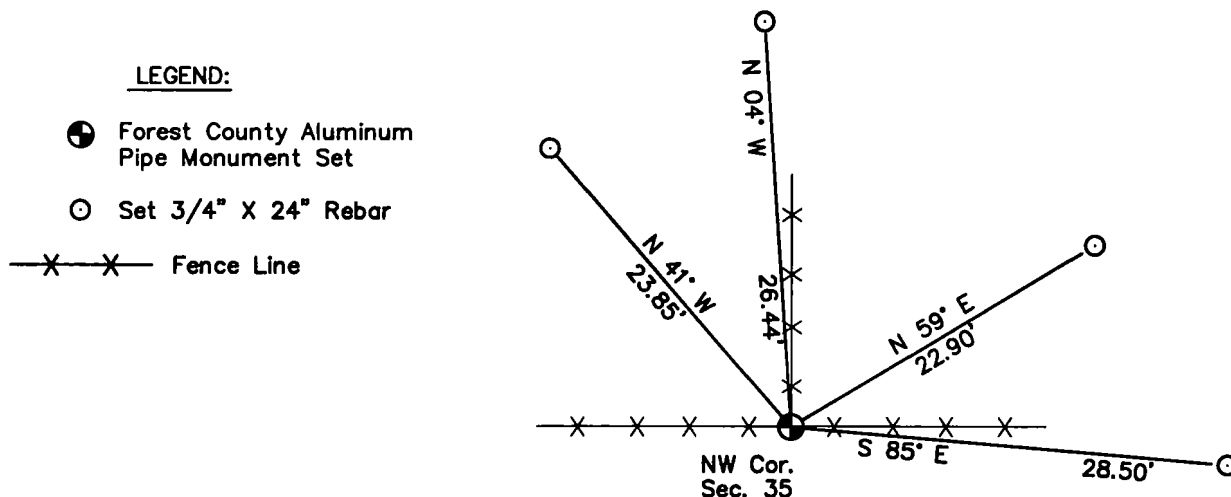
1865 - J. L. Nowlin, set corner post to sections 26, 27, 34 and 35 and made the following B.T.'s:  
Birch, 8", N 69° W, 160 lks., 105.60 feet.  
Sugar, 10", S 11° W, 140 lks., 92.40 feet.

2005 - I found no evidence of the original corner. I set a 2 1/2" x 30" Forest County Aluminum Pipe Monument at intersection of old fence lines running East and West and North.  
I accepted the fence line intersection as the best available evidence of the Section corner position.

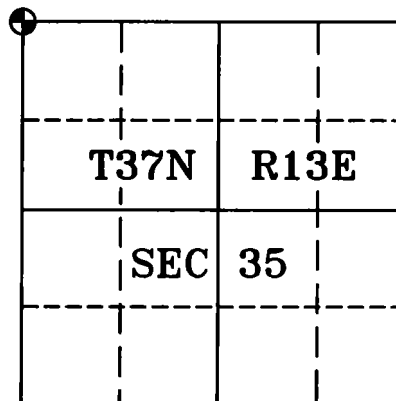
Corner was: (Check All That Apply)

- ☐ Restored through acceptance of an obliterated evidence location.
- ☒ Restored through acceptance of a found perpetuated location.
- ☐ Considered a lost corner and reestablished through lost corner proportionate methods (include a plan view drawing showing distances and directions to other Public Land Survey Corners used for proportioning and determining the corner location).
- ☐ Restored or reestablished in a location that differs from a previous restoration or reestablishment (include a plan view drawing and indicate what was set and/or found).

Describe the monument and accessories used to perpetuate the location of this corner (include a plan view drawing and indicate what was set and/or found).



Sketch Not To Scale



I, Michael A. Tremel, RLS  
(type or print name) certify that the corner location shown on this record was determined by me or under my direction and control and that this U.S. Public Land Survey Monument Record is correct and complete to the best of my knowledge and belief.

Michael A. Tremel 4/19/05  
Signature Date

The Northwest corner of  
Section 35 T. 37 N., R. 13 E.  
Forest County, WI

Index No. V-17