



Document Number

Stock No. 26273

184223

U.S. PUBLIC LAND SURVEY MONUMENT RECORD

(As Required by WI Adm. Code)

History of original corner establishment and subsequent restorations and descriptions of any record, monument, occupational, testimonial or other evidence considered:

1865 - James Nowlin, set original corner post and made the following B.T.'s:

- Birch, 12", N 18° E, 40 lks., 26.40 feet.
- Birch, 16", S 80° W, 60 lks., 39.60 feet.

1919 - I.R. Ritter, RLS set an iron pipe for the quarter corner and made the following B.T.'s:

- Cedar, 4", North, 50 lks., 33.00 feet.
- Cedar, 4", S 45° W, 50 lks., 33.00 feet.

2004 - Michael A. Tremi, RLS found a 2" dia. Iron pipe at intersection of road S. & E. I replaced iron pipe with a 2" X 30" Forest County Aluminum Pipe Monument for the Quarter Corner.

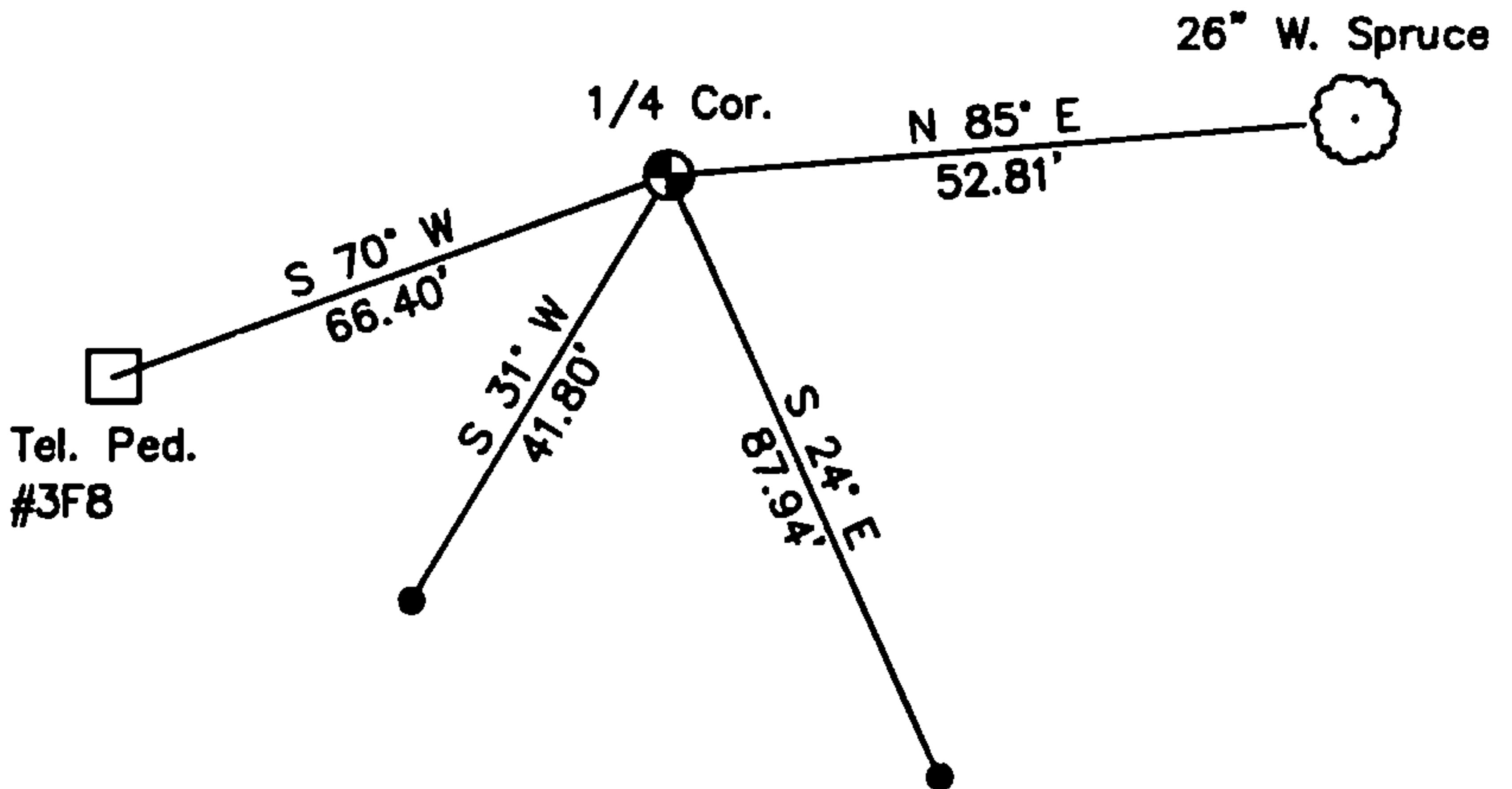
Corner was: (Check All That Apply)

- Restored through acceptance of an obliterated evidence location.
- Restored through acceptance of a found perpetuated location.
- Considered a lost corner and reestablished through lost corner proportionate methods (include a plan view drawing showing distances and directions to other Public Land Survey Corners used for proportioning and determining the corner location).
- Restored or reestablished in a location that differs from a previous restoration or reestablishment (include a plan view drawing and indicate what was set and/or found).

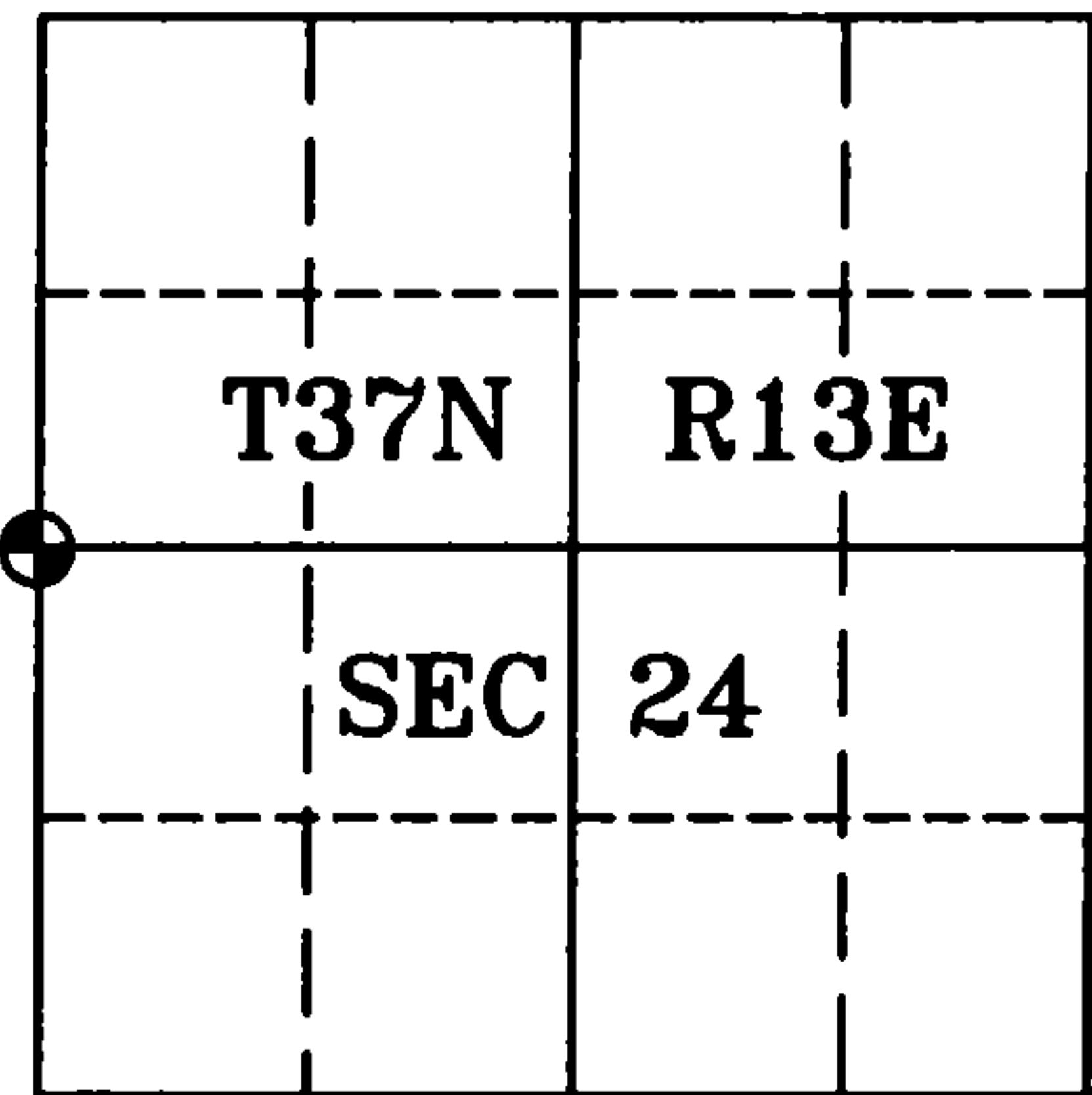
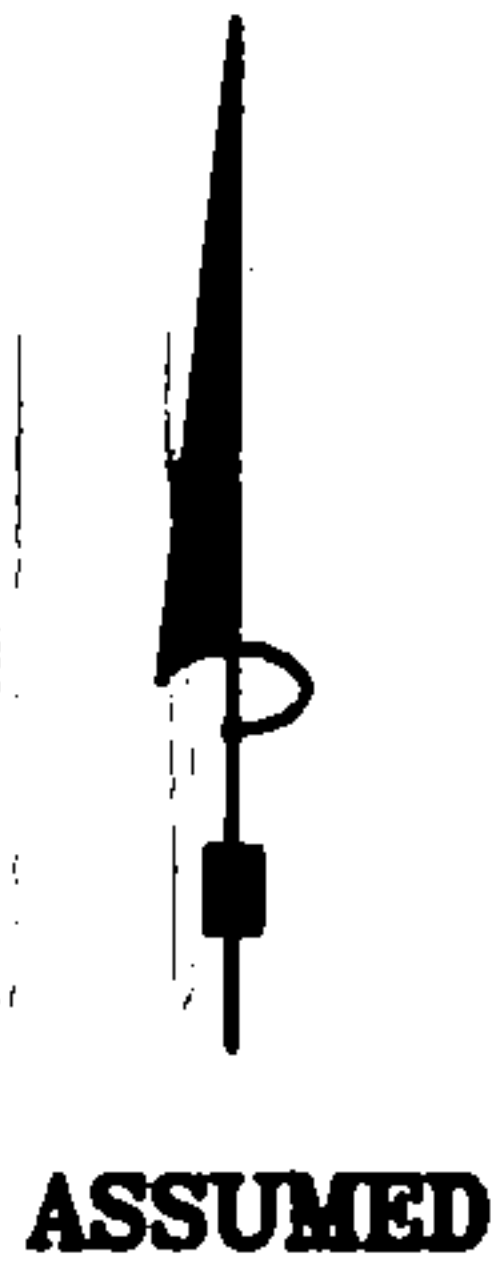
Describe the monument and accessories used to perpetuate the location of this corner (include a plan view drawing and indicate what was set and/or found).

LEGEND:

- 2" X 30" Forest County Aluminum Pipe Monument Set
- 3/4" X 24" Rebar Set



REGISTER'S OFFICE
 Forest County, Wis.
 Received for record this 2nd day
 of July A.D., 2004 at
3:25 o'clock P.M. and recorded
 in Vol. Corner Restorations
 page P-21
Kay Swanson, Deputy
 Register of Deeds



I, Michael A. Tremi, RLS
 (type or print name) certify that the corner location shown on
 this record was determined by me or under my direction and
 control and that this U.S. Public Land Survey Monument Record
 is correct and complete to the best of my knowledge and belief.

Michael A Tremi 7/1/04
 Signature Date

The West Quarter corner of
 Section 24 T. 37 N., R. 13 E.
 Forest County, WI

Index No. P-21

43713 232000

P-21