

CERTIFIED LAND CORNER RESTORATION

Index No. R-5

State of Wisconsin }
County of Forest } ss.

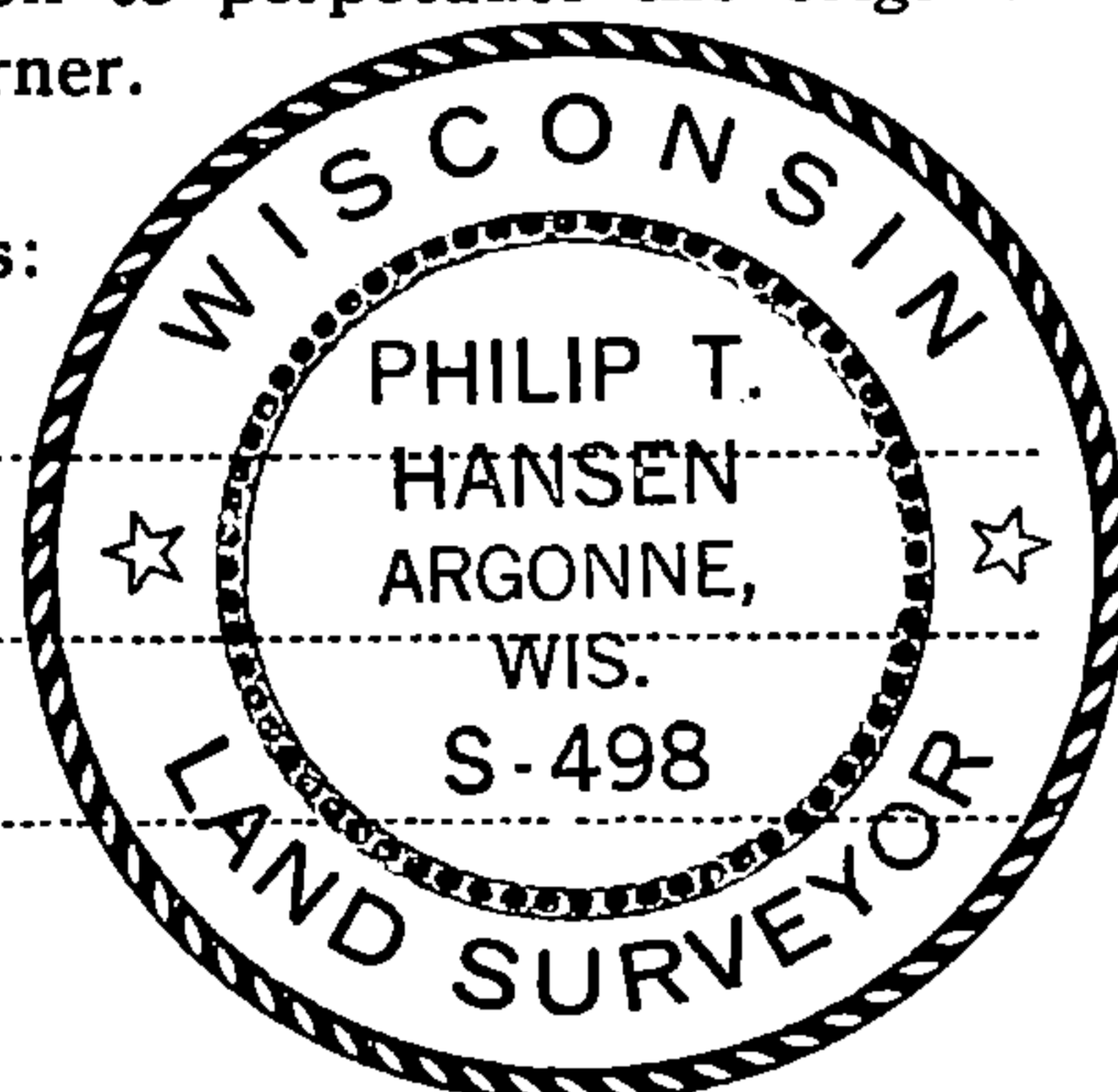
I Philip T. Hansen, do hereby certify that on the 14th day of November, 1977, I found evidence of the Section corner of Sec. 19, 20, 29, 30 Township 37, North, Range 13 East, Fourth Principal Meridian, as described hereon; and that from this evidence I established a new monument and accessories as described hereon to perpetuate the original location of this corner.

Resident witnesses:

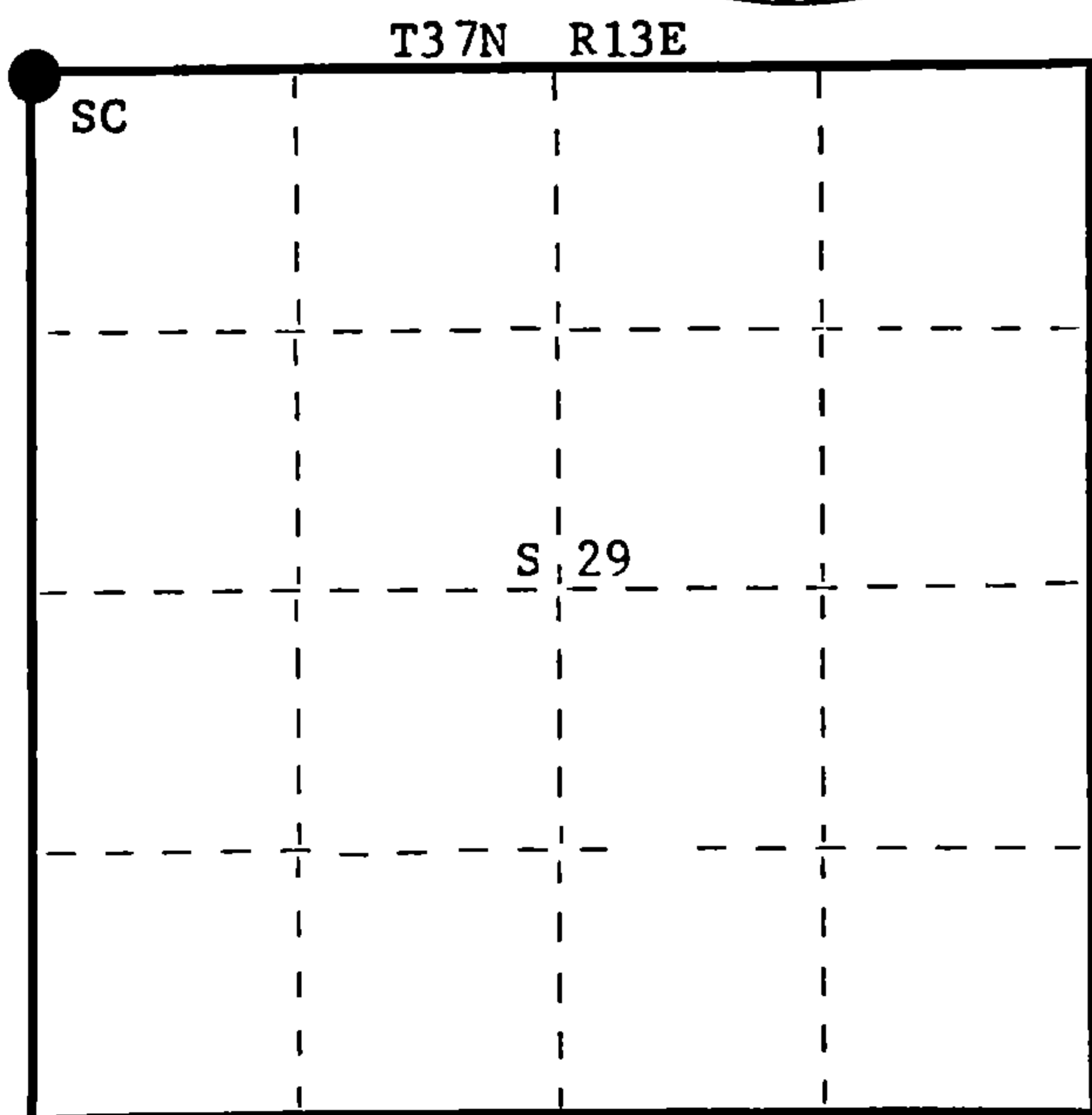
Glen Barker

Jim Claflin

Herb Wagoner



FORM 985 H. C. MILLER CO., MILWAUKEE



○ = Corner monument restored.

History of original corner establishment:

No record of any survey subsequent to the original survey.

Description of corner evidence found:

Recovered R.R. spike below surface of blacktop at intersection of Highway 32, projected west and south with centerline of Highway P and Town Road West. Corner believed to have been established by T. Arnott.

Description of monument and accessories I established to perpetuate the original location of this corner.

Set a 2 1/2" Berntsen A-1 Federal Monument, aluminum with magnet in cap and base for witness corner S50°W, 80 links.

Monument projects 18" above ground. Cap stamped:

Marked B.O.'s - Power pole #3713 19R21 N45°W, 53.9 links (spike)
Power pole #3713 20L17 N52°E, 62.7 links (spike)
Power pole #3713 30E10 S14°W, 118.1 links (spike)

T37N R13E
Sec. 19 + 20
30 + 29 W.C.
S498 - 1977
N50°E 80 lks to Cor.

Dated at Rhineland, Wis., this 16th day of November, 1977

Signature Philip T. Hansen Title Registered Land Surveyor Registration No. S-498
(County Surveyor, Registered Land Surveyor, or other duly authorized official)

Office of Register of Deeds, County of Forest, I hereby certify that the within instrument was filed in this office for record on the 17th day of November, 1977 at 4:00 o'clock P. M.

Eugene Staszny
(Register of Deeds)
By _____ Deputy

DOCUMENT NUMBER ----- **112815**

43713190000

Document Number

197422

REGISTER'S OFFICE
Forest County, Wis.

Received for record this 15th day
of May A.D., 2008 at
11:50 o'clock A.M. and recorded
in Vol. Corner Restoration
page R-5

Kay Swanson, Deputy
Register of Deeds

U.S. PUBLIC LAND SURVEY MONUMENT RECORD

(AS REQUIRED BY S. A-E 7.08, WI ADM. CODE)

HISTORY OF ORIGINAL CORNER ESTABLISHMENT AND SUBSEQUENT RESTORATIONS AND DESCRIPTION OF ANY RECORD, MONUMENT, OCCUPATIONAL, TESTIMONIAL, OR OTHER EVIDENCE CONSIDERED:

1858 - ALFRED MILLARD, SURVEYOR, SET POST

SET THE FOLLOWING WITNESSES:
CEDAR 10" S44°E 25 LINKS
SUGAR MAPLE 8" N34°W 33 LINKS

1977 - PHILIP T. HANSEN, SURVEYOR, S-498, SET A 2-1/2" BERNTSEN A-1 FEDERAL MONUMENT, ALUMINUM WITH A MAGNET IN THE CAP AND BASE, FOR A WITNESS CORNER, S50°E, 80 LINKS.

MARKED B.O.'S - POWER POLE #3713 19R21 N45°W 53.8 LINKS (SPIKE)
POWER POLE #3713 20L17 N52°E 62.7 LINKS (SPIKE)
POWER POLE #3713 30E10 S14°W 118.1 LINKS (SPIKE)

1998 - PLAT OF RIGHT OF WAY, WISDOT PROJECT NO. 9261-03-23, SHOWS A RAILROAD SPIKE AT THE INTERSECTION OF CTH N & HWY 32.

2006 - JAMES H. MOORE, SURVEYOR, S-1641, FOUND A RAILROAD SPIKE 3" UNDER THE BITUMINOUS. U.S. PUBLIC LAND SURVEY MONUMENT RECORD NO. 189926. SET THE FOLLOWING WITNESSES:

1" IRON PIPE w/ CEC CONTROL CAP S45°E 81.53 FEET - SET PIPE 2' NE OF TWO 8" POPLAR TREES.
1" IRON PIPE w/ CEC CONTROL CAP S10°W 119.62 FEET - SET PIPE 4' WEST OF 8" APPLE TREE.
1" IRON PIPE w/ CEC CONTROL CAP N30°W 159.03 FEET - SET PIPE 2.5' EAST OF P.P. #3713 19R21.
1" IRON PIPE w/ CEC CONTROL CAP N50°E 153.21 FEET - SET PIPE 2' SOUTH OF P.P. #3713 20L3.

CORNER WAS: (CHECK ALL THAT APPLY)

- RESTORED THROUGH ACCEPTANCE OF AN OBLITERATED LOCATION
- RESTORED THROUGH ACCEPTANCE OF A FOUND PERPETUATED LOCATION
- CONSIDERED A LOST CORNER AND REESTABLISHED THROUGH LOST CORNER PROPORTIONATE METHODS (INCLUDING A PLAN VIEW DRAWING SHOWING DISTANCES AND DIRECTIONS TO OTHER PUBLIC LAND SURVEY CORNERS USED FOR PROPORTIONING AND DETERMINING THE CORNER LOCATION)
- RESTORED OR REESTABLISHED IN A LOCATION THAT DIFFERS FROM A PREVIOUS RESTORATION OF REESTABLISHMENT (INCLUDE A PLAN VIEW DRAWING AND INDICATE WHAT WAS SET AND/OR FOUND)

DESCRIBE THE MONUMENT AND ACCESSORIES USED TO PERPETUATE THE LOCATION OF THIS CORNER. (INCLUDE A PLAN VIEW DRAWING AND INDICATE WHAT WAS SET AND/OR FOUND)

CORNER WAS REMOVED DURING CONSTRUCTION. FOUND MAG NAIL AT THE INTERSECTION OF HWY32 AND CTY RD. "N".

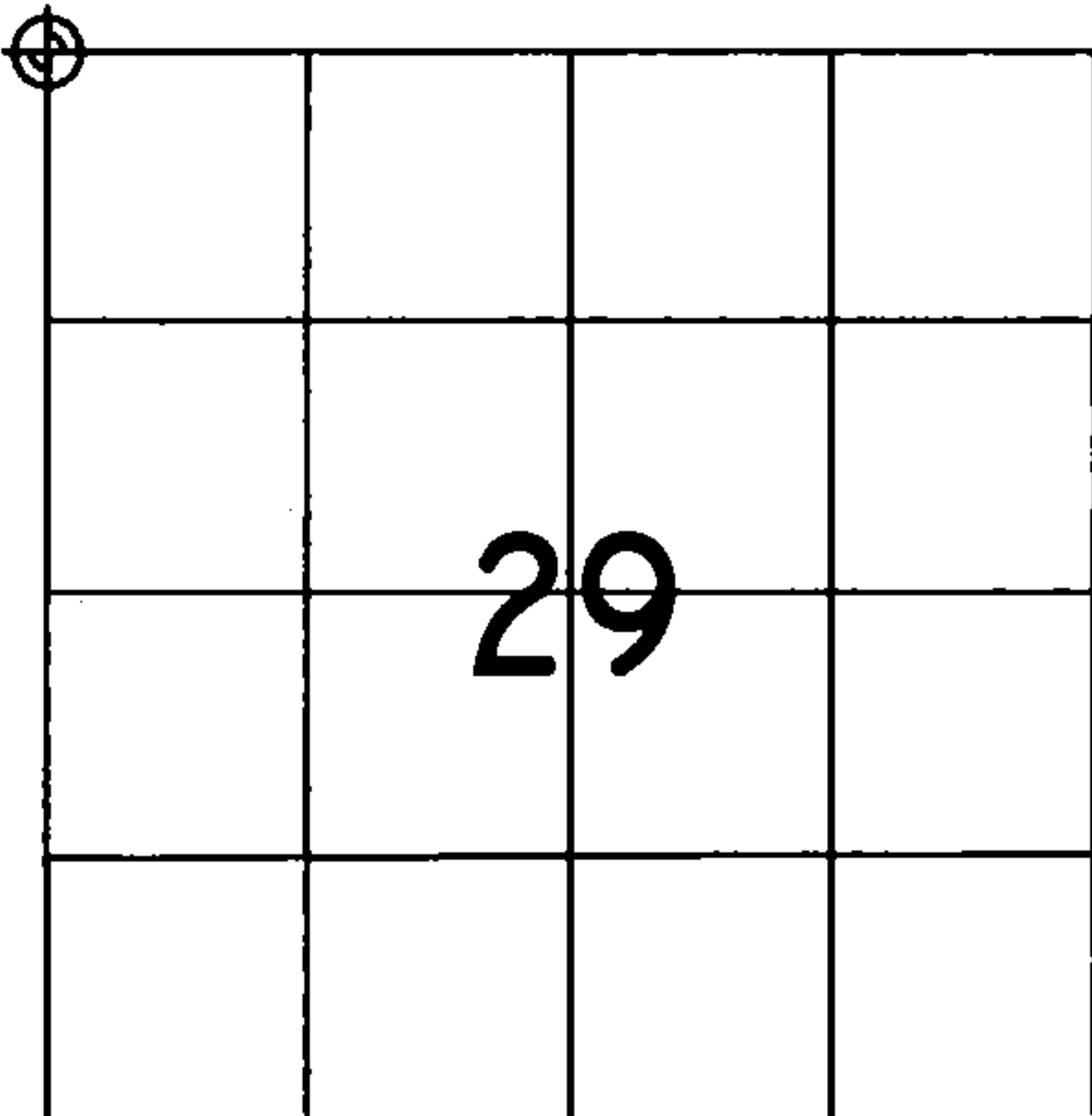
FOUND THE FOLLOWING WITNESSES:

1" IRON PIPE w/ R/W CAP S12°W 151.34 FEET WITH R/W SIGN
1" IRON PIPE w/ R/W CAP N69°W 278.60 FEET WITH R/W SIGN
1" IRON PIPE w/ R/W CAP N19°W 173.20 FEET WITH R/W SIGN

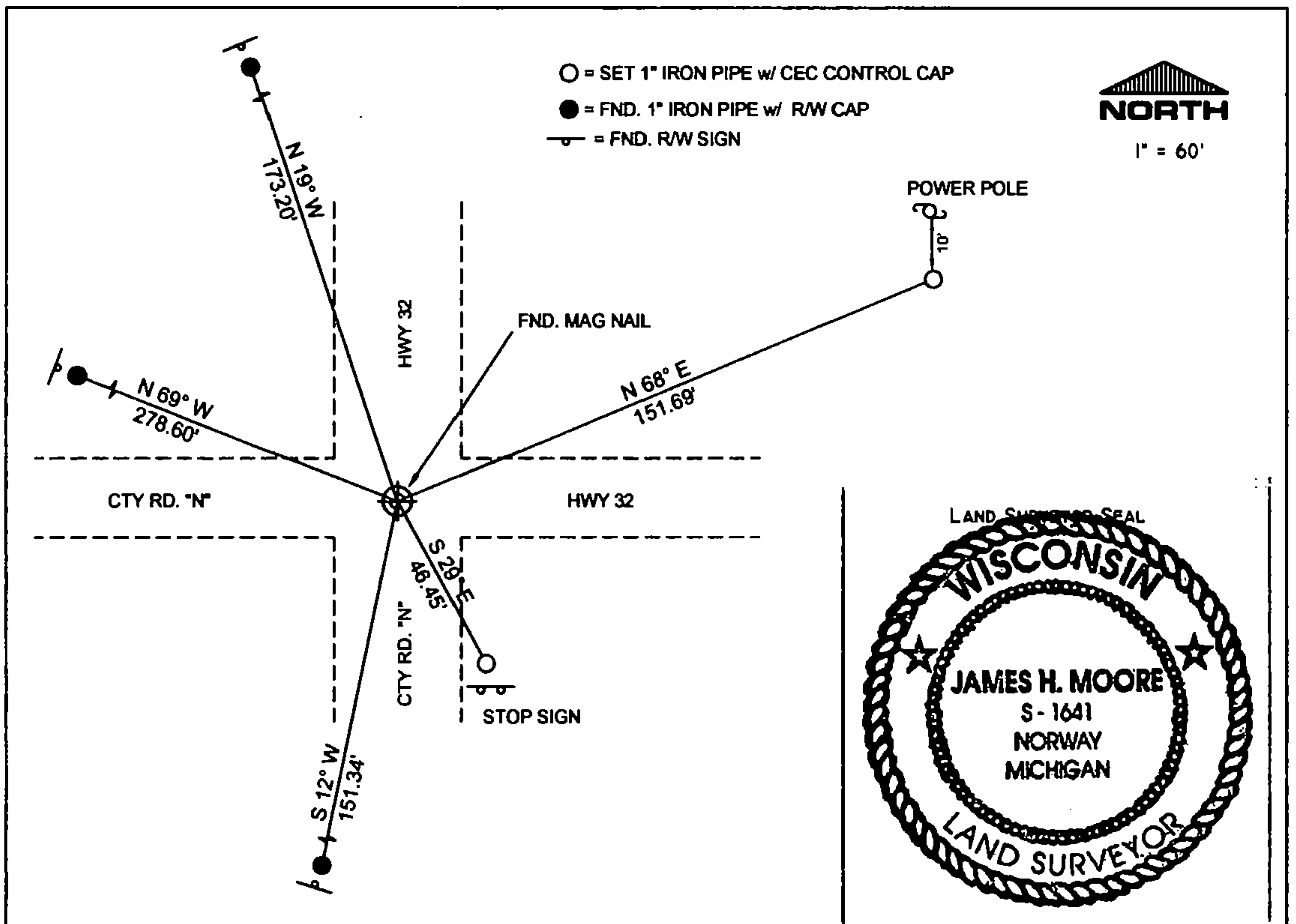
SET THE FOLLOWING WITNESSES:

1" IRON PIPE w/ CEC CONTROL CAP N68°E 151.69 FEET - 10 FEET SOUTH OF POWER POLE.
1" IRON PIPE w/ CEC CONTROL CAP S29°E 46.45 FEET - 2 FEET NORTH OF STOP SIGN.

THE NORTHWEST
CORNER OF SECTION 29,
T. 37 N., R. 13 E.,
FOREST COUNTY, WISCONSIN



⊕ = LOCATION OF CORNER



I, JAMES H. MOORE PS S-1641

(TYPE OR PRINT NAME) CERTIFY THAT THE CORNER LOCATION SHOWN ON THIS ABOVE RECORD WAS DETERMINED BY ME OR UNDER MY DIRECTION AND CONTROL AND THAT THIS U.S. PUBLIC LAND SURVEY MONUMENT RECORD IS CORRECT AND COMPLETE TO THE BEST OF MY KNOWLEDGE AND BELIEF.

INDEX No. R-5

SIGNATURE [Handwritten Signature]

DATE 5-15-08

43713190000

R-5

Document Number

189926

REGISTER'S OFFICE
Forest County, Wis.

Received for record this 18th day
of January A.D., 2006 at
9:00 o'clock A.M. and recorded
in Vol. Corner Restoration
page B-5

Kay Swanson, Deputy
Register of Deeds

U.S. PUBLIC LAND SURVEY MONUMENT RECORD

(AS REQUIRED BY S. A-E 5.02, WI ADM. CODE)

HISTORY OF ORIGINAL CORNER ESTABLISHMENT AND SUBSEQUENT RESTORATIONS AND DESCRIPTION OF ANY RECORD, MONUMENT, OCCUPATIONAL, TESTIMONIAL, OR OTHER EVIDENCE CONSIDERED:

1858 - ALFRED MILLARD, SURVEYOR, SET POST

SET THE FOLLOWING WITNESSES:
CEDAR 10" S44°E 25 LINKS
SUGAR MAPLE 8" N34°W 33 LINKS

1998 - PLAT OF RIGHT OF WAY, WISDOT PROJECT NO. 9261-03-23, SHOWS A RAILROAD SPIKE AT THE INTERSECTION OF CTH N & HWY 32.

CORNER WAS: (CHECK ALL THAT APPLY)

- RESTORED THROUGH ACCEPTANCE OF AN OBLITERATED LOCATION
- RESTORED THROUGH ACCEPTANCE OF A FOUND PERPETUATED LOCATION
- CONSIDERED A LOST CORNER AND REESTABLISHED THROUGH LOST CORNER PROPORTIONATE METHODS (INCLUDING A PLAN VIEW DRAWING SHOWING DISTANCES AND DIRECTIONS TO OTHER PUBLIC LAND SURVEY CORNERS USED FOR PROPORTIONING AND DETERMINING THE CORNER LOCATION)
- RESTORED OR REESTABLISHED IN A LOCATION THAT DIFFERS FROM A PREVIOUS RESTORATION OF REESTABLISHMENT (INCLUDE A PLAN VIEW DRAWING AND INDICATE WHAT WAS SET AND/OR FOUND)

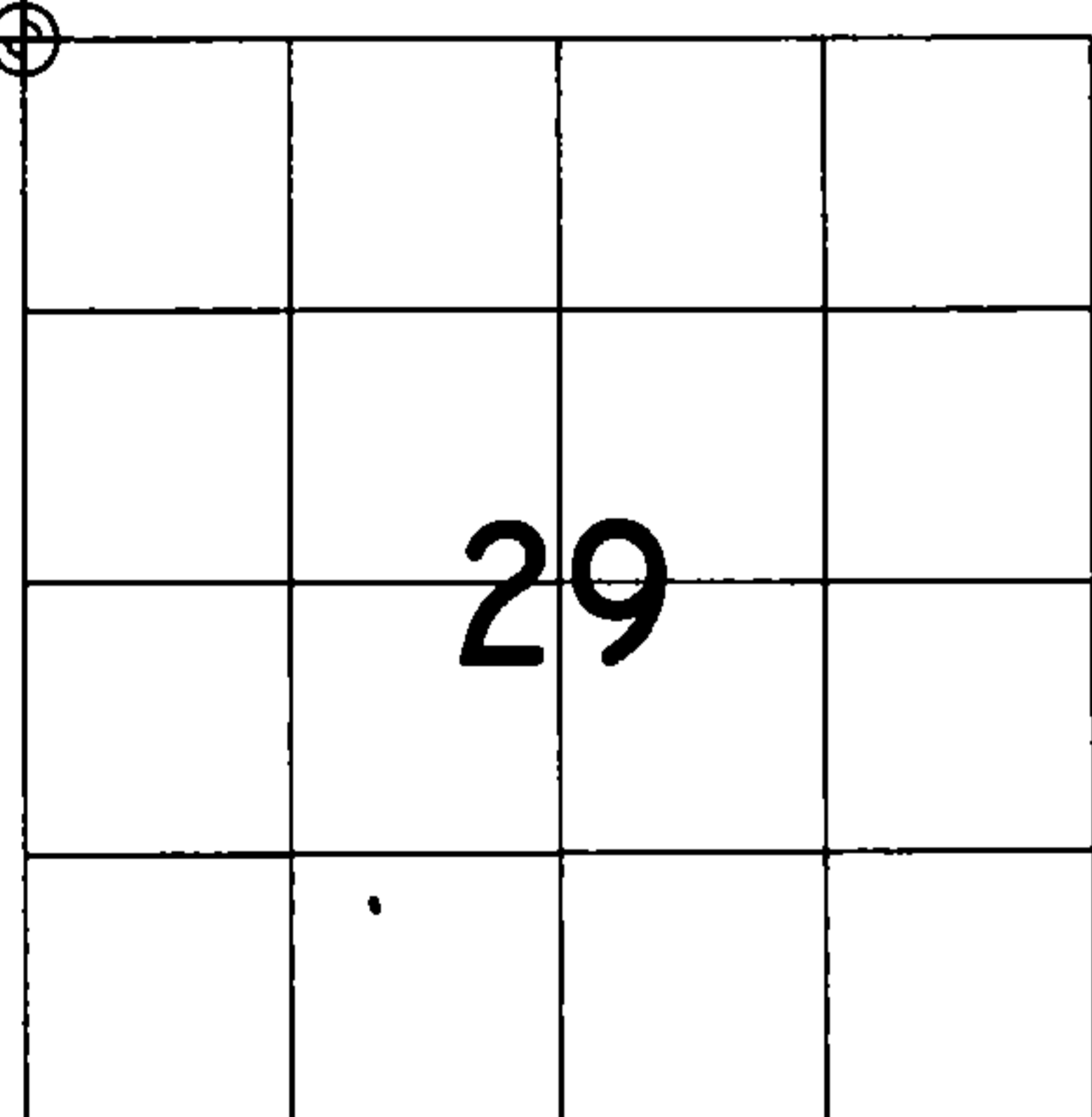
DESCRIBE THE MONUMENT AND ACCESSORIES USED TO PERPETUATE THE LOCATION OF THIS CORNER. (INCLUDE A PLAN VIEW DRAWING AND INDICATE WHAT WAS SET AND/OR FOUND)

FOUND A RAILROAD SPIKE 3" UNDER THE BITUMINOUS.

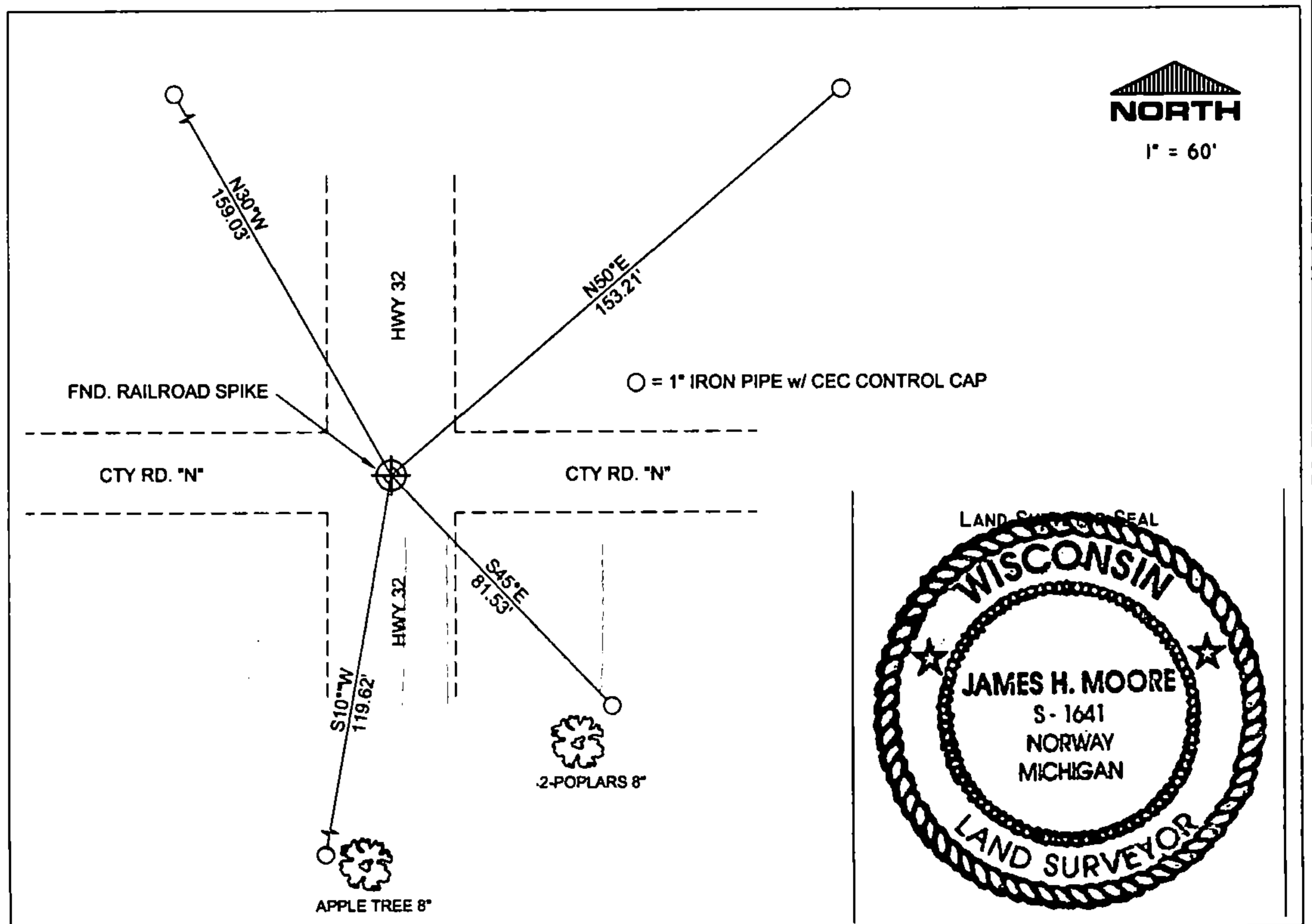
SET THE FOLLOWING WITNESSES:

1" IRON PIPE w/ CEC CONTROL CAP S45°E 81.53 FEET - SET PIPE 2' NE OF TWO 8" POPLAR TREES.
 1" IRON PIPE w/ CEC CONTROL CAP S10°W 119.62 FEET - SET PIPE 4' WEST OF 8" APPLE TREE.
 1" IRON PIPE w/ CEC CONTROL CAP N30°W 159.03 FEET - SET PIPE 2.5' EAST OF P.P. #3713 19R21.
 1" IRON PIPE w/ CEC CONTROL CAP N50°E 153.21 FEET - SET PIPE 2' SOUTH OF P.P. #3713 20L3.

THE NORTHWEST
CORNER OF SECTION 29,
T. 37 N., R. 13 E.,
FOREST COUNTY, WISCONSIN



⊕ = LOCATION OF CORNER



I, JAMES H. MOORE PS S-1641

(TYPE OR PRINT NAME) CERTIFY THAT THE CORNER LOCATION SHOWN ON THIS ABOVE RECORD WAS DETERMINED BY ME OR UNDER MY DIRECTION AND CONTROL AND THAT THIS U.S. PUBLIC LAND SURVEY MONUMENT RECORD IS CORRECT AND COMPLETE TO THE BEST OF MY KNOWLEDGE AND BELIEF.

INDEX No. C-9

James H. Moore
SIGNATURE

1-16-06
DATE

43713190000

R-5