

U.S. PUBLIC LAND SURVEY MONUMENT RECORD

Index No. L-5

State of Wisconsin }
 County of Forest } ss.

I, William B. Cochrane, do hereby certify that on the 10th day of April, 1991, I found evidence of the West Quarter corner of Section 17 Township 37, North, Range 13 East, Fourth Principal Meridian, as described hereon; and that from this evidence I established a new monument and accessories as described hereon to perpetuate the original location of this corner.

Resident witnesses:

Dean Young

History of original corner establishment:

Original Government Survey in 1865 by J.L. Nowlin. North between Sections 17 and 18, at 40.00 chains, set Quarter Section Post, from which the following bear;

Sugar	15"	N18°E	25 lks.
Birch	12"	N05°W	40 lks.

Description of corner evidence found:

Found a 1 3/4 inch diameter well pipe. No other evidence was recovered.

I accept the well pipe as the best available evidence for restoring the corner position.

Old East-West fence line starts approximately 200 feet East of corner.

Description of monument and accessories I established to perpetuate the original location of this corner.

In place of well pipe, set a 2 1/2 inch diameter aluminum pipe monument, 3 feet long, 2 1/2 feet in the ground, with an aluminum cap stamped; T37N R13E, 1/4, S17, S18, 1991, S-1107. From which the following new blazed and scribed bearing trees bear;

B. Spruce	10"	S58°E	37.49 feet
DBL Balsam	13"	S10°E	49.13 feet
Steel Sign Post		Northeast	1.00 feet

East-West fence line starts East of the corner approximately 200 feet.

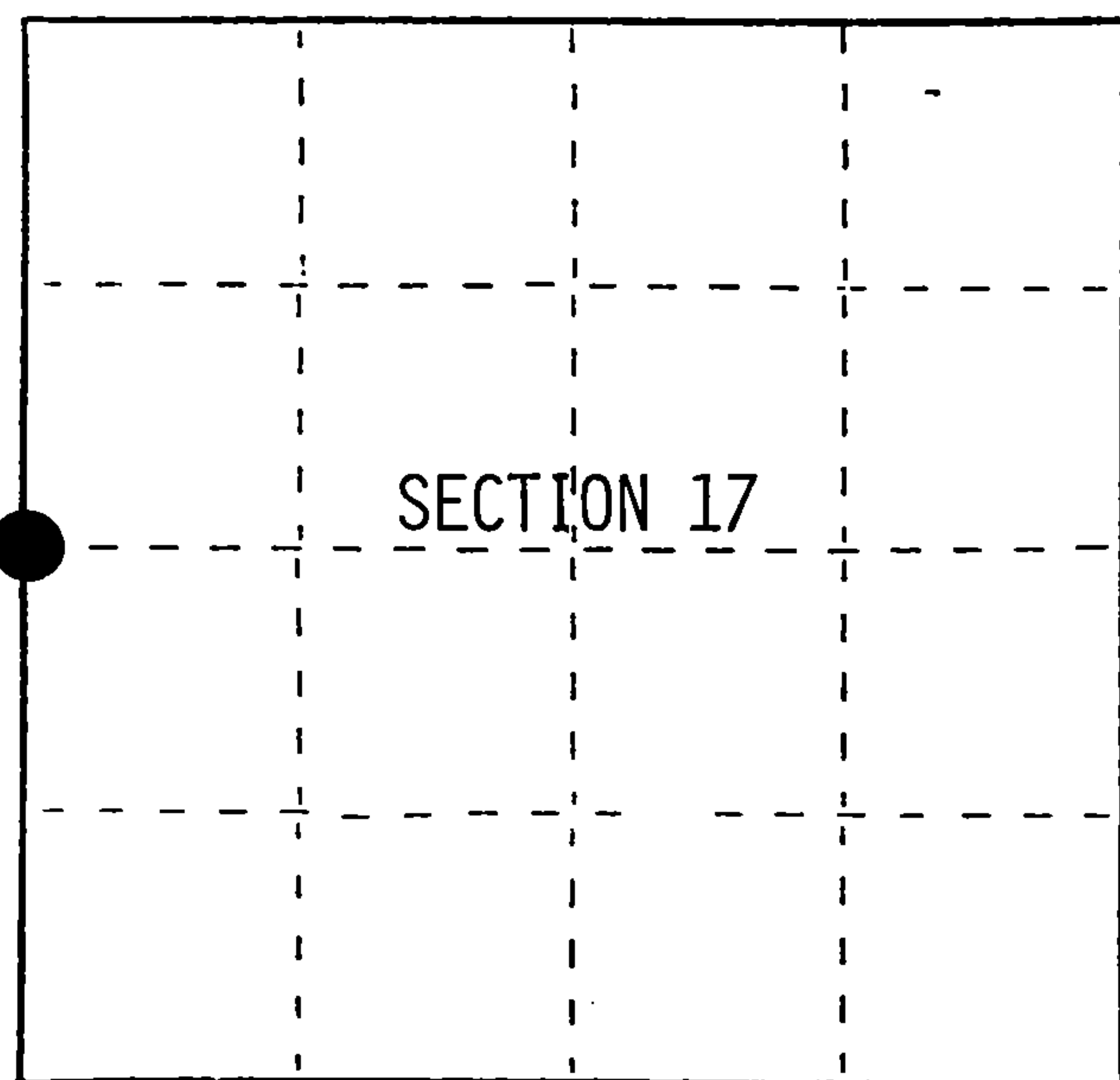
Dated at Hiles, Wis., this 19th day of February, 1992

Signature William B. Cochrane Title Land Surveyor Registration No. NS-1107
 (County Surveyor, Registered Land Surveyor, or other duly authorized official)

Office of Register of Deeds, County of Forest, I hereby certify that the within instrument was filed in this office for record on the 31st day of August, 1992 at 10:15 o'clock A. M.

Paul Aschenbrenner
 (Register of Deeds)

By.....Deputy



● = Corner monument restored.

FORM NO. 985-A

H.C. Miller Company

Stock No. 26273
 DOCUMENT NUMBER
 145338

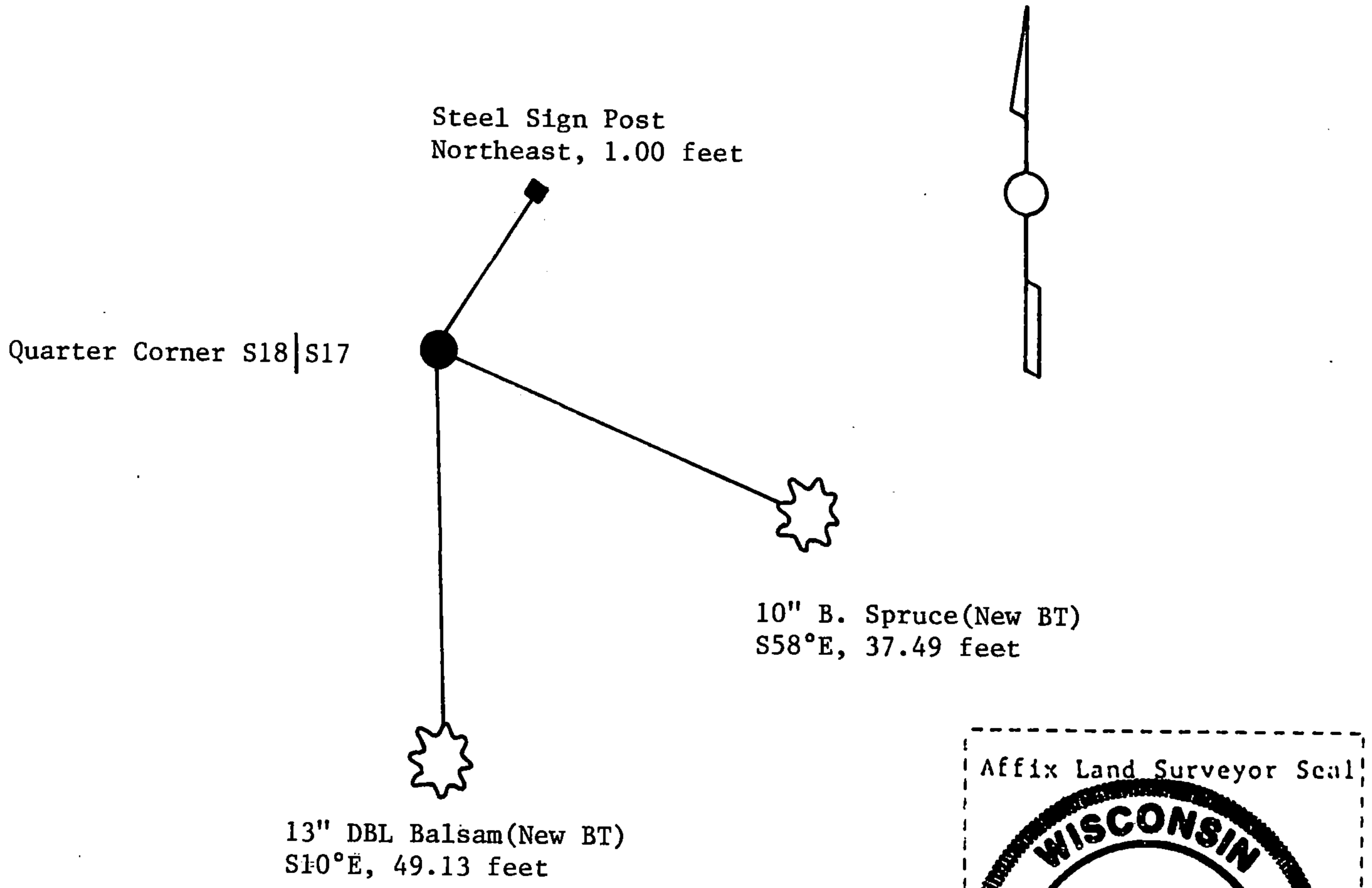
43713182000

(e) Describe any material discrepancy between the location of the corner as restored or reestablished and the location of that corner as previously restored or reestablished by distance and direction. Show the discrepancy on the plan view drawing under (d), above. Show the distances between the corner as previously restored or reestablished and (1) the corner as restored or reestablished, and (2) to at least 2 of the witness monuments shown on the drawing in (d), above.

(f) Was the corner restored through acceptance of (1) an obliterated evidence location, or, (2) a found perpetuated location?

Restored from accepted evidence.

(g&h) Was the corner reestablished through lost corner proportionate methods? If so, show the method, including the directions and distances to other public land survey corners used as evidence or used for proportioning in determining the corner location?



(i) I, William B. Cochrane
(type or print name) certify that the corner location shown on this record was determined by me or under my direction and control and that this U.S. Public Land Survey Monument Record is correct and complete to the best of my knowledge and belief.

William B. Cochrane Feb. 19, 1992
Signature Date

Survey requested by: Sue Vap 4/2/92
District Ranger Date