

CERTIFIED LAND CORNER RESTORATION  
 U.S. PUBLIC LAND SURVEY MONUMENT RECORD

Index No. I-1

State of Wisconsin }  
 County of Forest } ss.

I Glen Barker, do hereby certify that on the 2nd day of February, 1989, I found Est. the Section Corner corner of Section 12-13-7-18 Township 37, North, Range 13 & 14 East, Fourth Principal Meridian, as described hereon; and that from this evidence I established a new monument and accessories as described hereon to perpetuate the original location of this corner.

Resident witnesses:

Norm Spiess

Don Broadbridge

History of original corner establishment:

Original Corner established by Alfred Millard, Gov. Deputy Surveyor in 1858 from which Lind 20" bears N40W 22.1ks, Lind 20" N43E 56.1ks, Lind 22" S62E 24 lks, and Sugar 18" S62E 24. lks.

Description of corner evidence found:

Section corner reestablished on a proportional measurement to original survey. Total distance from 1/4 corner between Sections 12 & 7 to Section corner 13-24-18-19 T37N R13 & 14E is 7912.25'. Recorded original distance was 7920.00'.

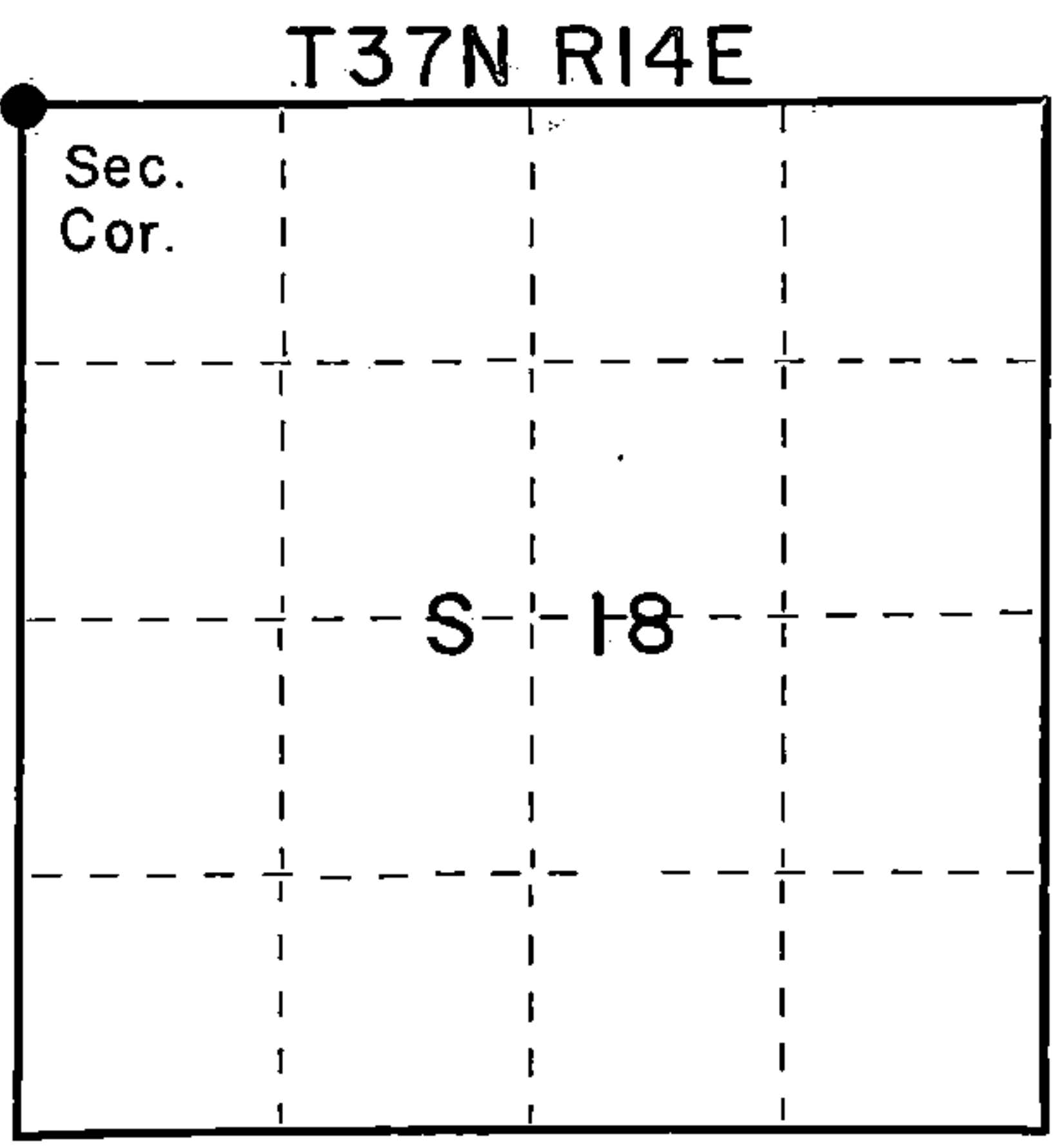
Reestablished Section corner 5274.83' of above Section corner and 2637.42' of above 1/4 corner on a straight line between the two.

Description of monument and accessories I established to perpetuate the original location of this corner.

Set a 2 1/4" aluminum Forest County Monument with 3/4" alloy cap stamped. Monument projects 10" above ground.

Marked NBTs:  
 Sugar 5" N77E 20.77'  
 Sugar 6" S55E 25.74'  
 Sugar 8" S6W 32.10'  
 Sugar 10" N48W 20.15'

T37N	
R13E	R14E
S12	S7
S13	S18
1989	
S-1682	



○ = Corner monument restored.

Dated at Rhineland, Wis., this 31st day of March, 1989

Signature Glen Barker Title Registered Land Surveyor Registration No. 1682  
 (County Surveyor, Registered Land Surveyor, or other duly authorized official)

Office of Register of Deeds, County of Forest, I hereby certify that the within instrument was filed in this office for record on the 31st day of March, 1989 at 10:25 o'clock A. M.

Paul Aschenbrenner  
 (Register of Deeds)

By \_\_\_\_\_ Deputy

DOCUMENT NUMBER  
**137129**

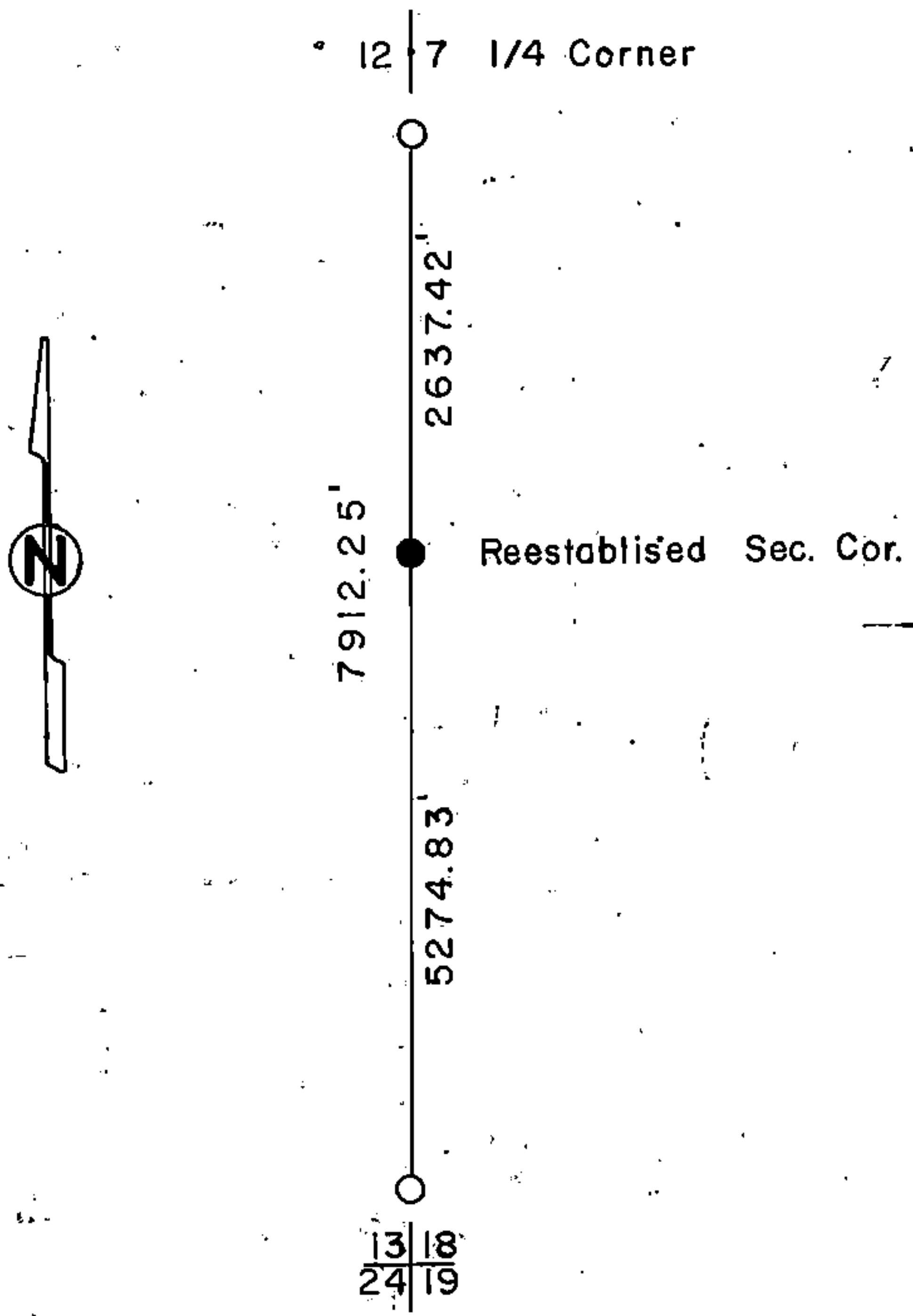
FORM 985 H. C. MILLER CO., MILWAUKEE

0000213115H

(c) Describe any material discrepancy between the location of the corner as restored or reestablished and the location of that corner as previously restored or reestablished by distance and direction. Show the discrepancy on the plan view drawing under (d), above. Show the distances between the corner as previously restored or reestablished and (1) the corner as restored or reestablished, and (2) to at least 2 of the witness monuments shown on the drawing in (d), above.

(f) Was the corner restored through acceptance of (1) an obliterated evidence location, or, (2) a found perpetuated location?

(g&h) Was the corner reestablished through lost corner proportionate methods? If so, show the method, including the directions and distances to other public land survey corners used as evidence or used for proportioning in determining the corner location?



(i) I, Glen Barker  
 (type or print name) certify that the corner location shown on this record was determined by me or under my direction and control and that this U.S. Public Land Survey Monument Record is correct and complete to the best of my knowledge and belief.

Glen Barker  
 Signature

3/31/89  
 Date