

U.S. PUBLIC LAND SURVEY MONUMENT RECORD

Index No. **G-17**

State of Wisconsin }
 County of Forest } ss.

I, Gary L. Pisoni, do hereby certify that on the 8th day of March, 1993, I found evidence of the East Quarter corner of Section 10 Township 37, North, Range 13 East, Fourth Principal Meridian, as described hereon; and that from this evidence I established a new monument and accessories as described hereon to perpetuate the original location of this corner.

Resident witnesses:

History of original corner establishment:

Original Government Survey in 1865 by J.L. Nowlin. North between Sections 10 and 11, at 40.00 chains, set Quarter Section Post, from which the following bear;

Spruce	10"	N75°W	10 lks.
Spruce	6"	S63°E	5 lks.

Description of corner evidence found:

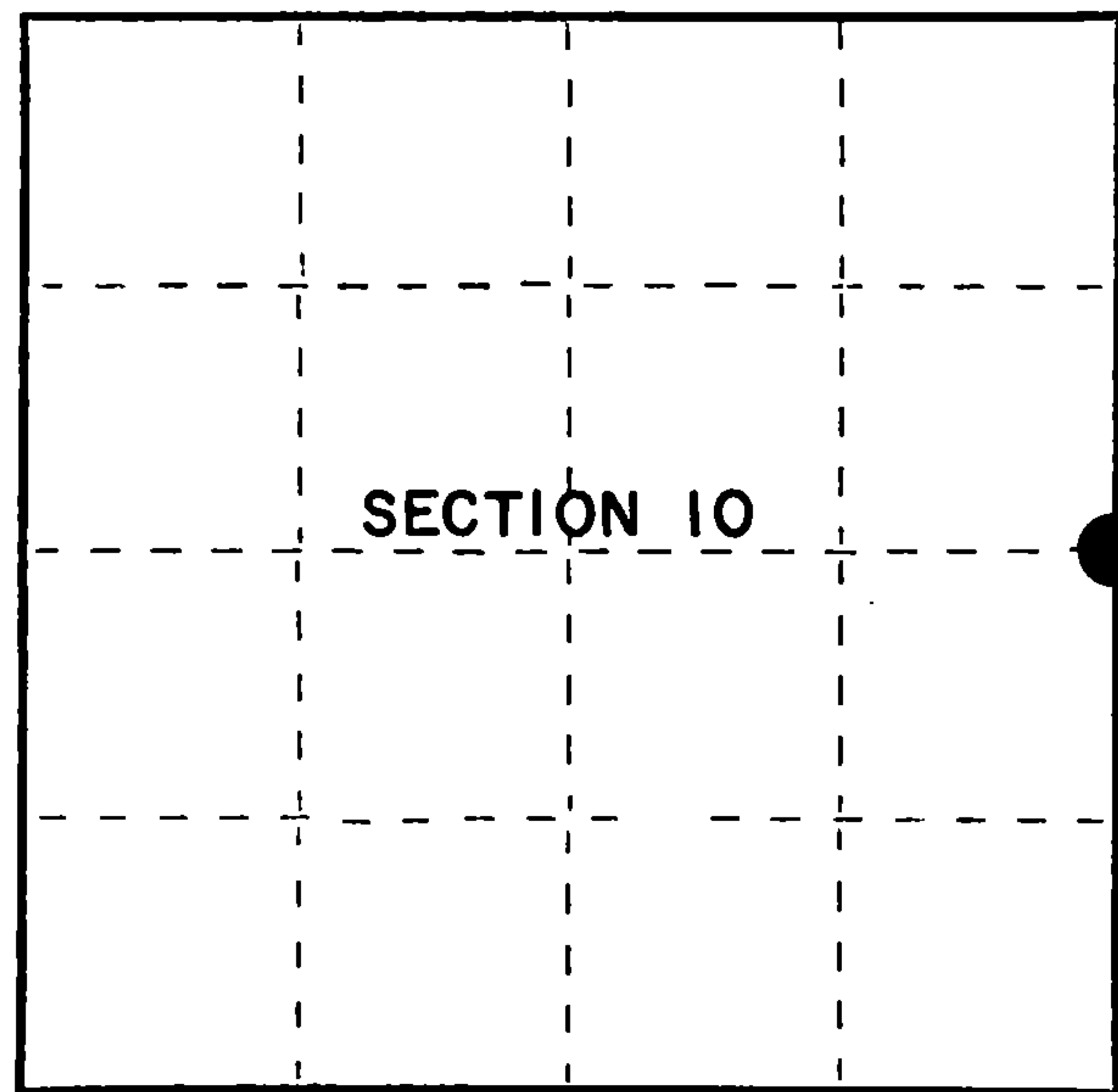
No corner evidence was recovered.

I re-established the corner position at proportionate distance and on line between the Northeast and Southeast Section Corners of Section 10.

Description of monument and accessories I established to perpetuate the original location of this corner.

At the corner position, set a 2½ inch diameter aluminum pipe monument, 3 feet long, 3 inches above the ground surface, with an aluminum cap stamped; T37N R13E, 1/4, S10, S11, 1993, S-1634. From which the following new blazed and scribed bearing trees bear; (Measurements are taken to a nail in side of tree)

Balsam	6"	S33°E	16.43 feet
Red Maple	8"	S04°W	16.01 feet
Red Maple	7"	N50°W	9.79 feet
Red Maple	8"	N01°E	18.55 feet
Steel Sign Post		East	1.12 feet



● = Corner monument restored.

Dated at Iron River, MI, ~~Wis.~~, this 22nd day of April, 1993

Signature Gary L. Pisoni Title Land Surveyor Registration No. S-1634
 (County Surveyor, Registered Land Surveyor, or other duly authorized official)

Office of Register of Deeds, County of Forest, I hereby certify that the within instrument was filed in this office for record on the 12th day of August, 1993 at 1:25 o'clock P M.

By [Signature] (Register of Deeds) Deputy

FORM NO. 985-A

H.C. Miller Company

Stock No. 26273
 DOCUMENT NUMBER

148143

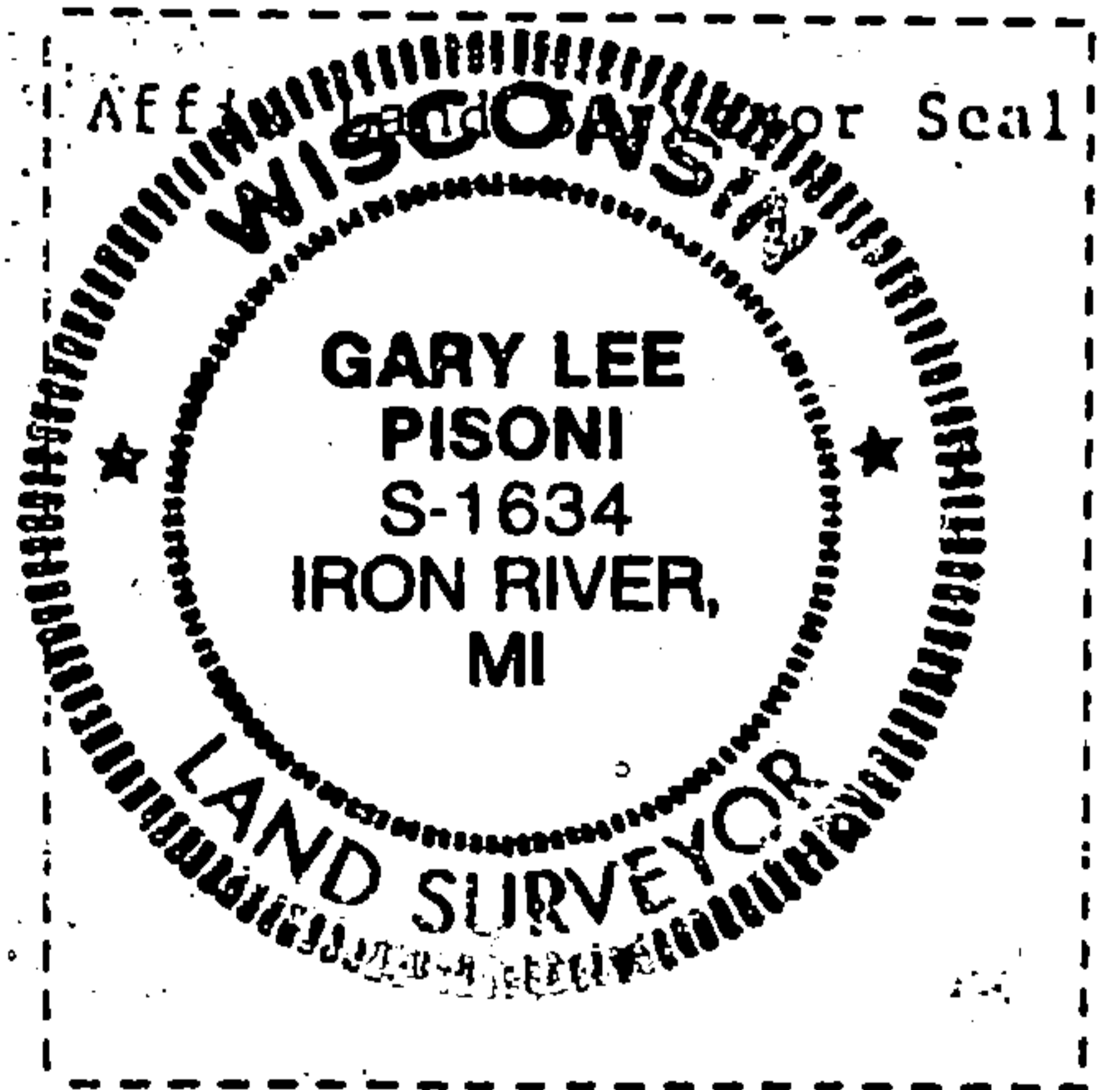
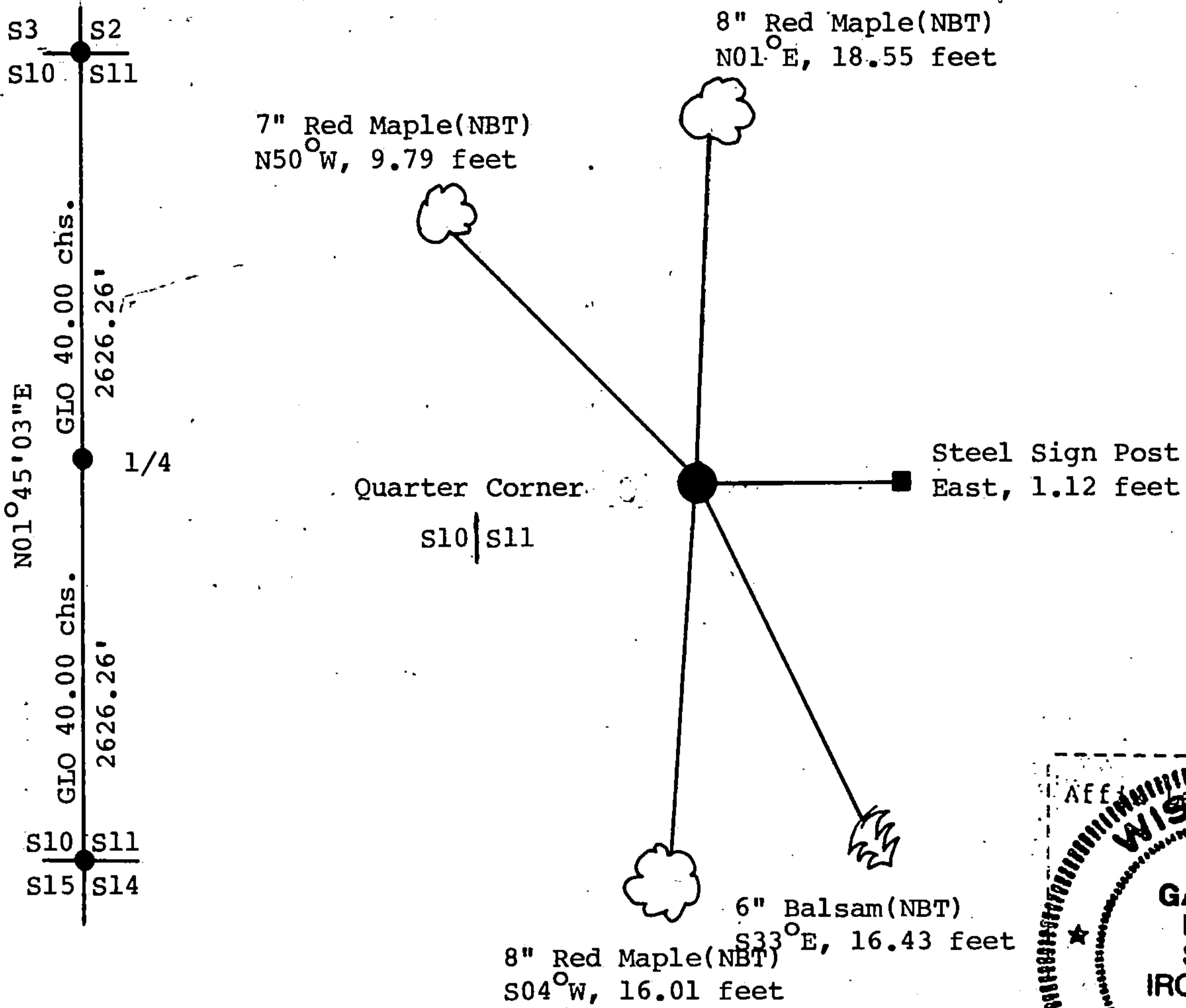
43713102000

(e) Describe any material discrepancy between the location of the corner as restored or reestablished and the location of that corner as previously restored or reestablished by distance and direction. Show the discrepancy on the plan view drawing under (d), above. Show the distances between the corner as previously restored or reestablished and (1) the corner as restored or reestablished, and (2) to at least 2 of the witness monuments shown on the drawing in (d), above.

See drawing below.

(f) Was the corner restored through acceptance of (1) an obliterated evidence location, or, (2) a found perpetuated location?

(g&h) Was the corner reestablished through lost corner proportionate methods? If so, show the method, including the directions and distances to other public land survey corners used as evidence or used for proportioning in determining the corner location?
 Re-established through lost corner proportionate methods.



(i) Gary L. Pisoni
 (type or print name) certify that the corner location shown on this record was determined by me or under my direction and control and that this U.S. Public Land Survey Monument Record is correct and complete to the best of my knowledge and belief.

Gary L. Pisoni Signature June 25, 1993 Date

Survey requested by: Sue Vap District Ranger 8/12/93 Date