

U.S. PUBLIC LAND SURVEY MONUMENT RECORD

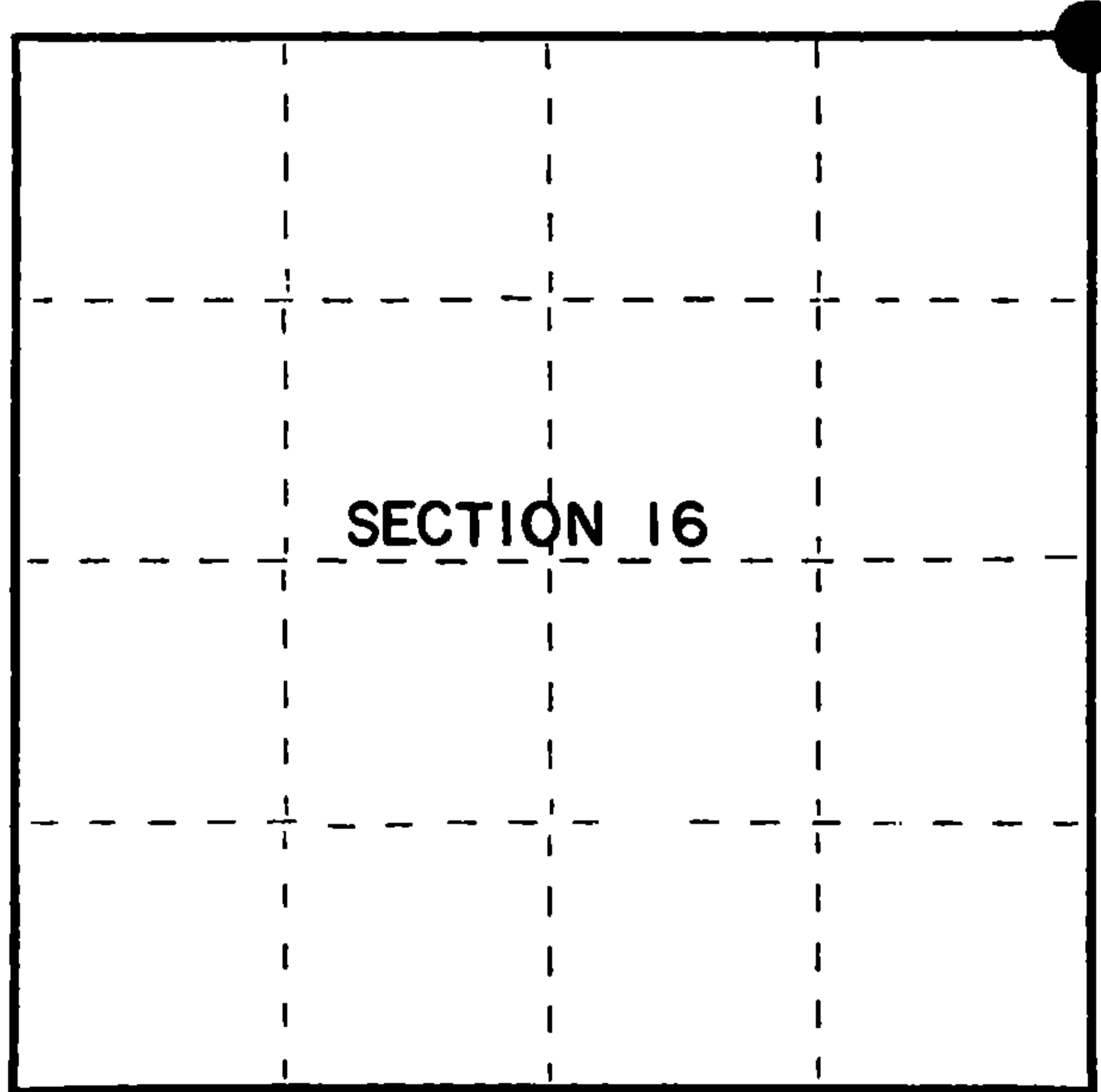
Index No. J-13

State of Wisconsin

County of Forest } ss.

I Gary L. Pisoni, do hereby
certify that on the 2nd day
of March, 1993, I found
evidence of the Northeast Section
corner of Section 16
Township 37, North, Range
13 East, Fourth Principal Meridian,
as described hereon; and that from this evidence
I established a new monument and accessories
as described hereon to perpetuate the original
location of this corner.

Resident witnesses:



● = Corner monument restored.

History of original corner establishment:

Original Government Survey in 1865 by J.L. Nowlin. North between Sections 15 and 16,
at 80.00 chains, set Section Corner Post to Sections 9, 10, 15 and 16, from which
the following bear;

Hemlock	10"	N70°W	16 lks.
Cedar	12"	N71°E	15 lks.

Description of corner evidence found:

Found fence line which bears West, center-line of Hwy 55 bears North, and 2 Right of
Way Markers bear East.

I accept the center-line of Hwy 55 and the fence line to the West as the best available
evidence for restoring the corner position. The right of way posts line up with the
fence corner to the West.

Description of monument and accessories I established to perpetuate the original location of this corner.

At the corner position, set a 2½ inch diameter aluminum pipe monument, 3 feet long,
1 inch below the gravel surface in the East Shoulder of Hwy 55, with an aluminum
cap stamped; T37N R13E, S9, S10, S15, S16, 1993, S-1634. From which the following
new blazed and scribed bearing trees bear; (measurements taken to a nail in side of tree)

Utility Pole	#3713-10L1	N39°E	97.71 feet
Red Pine	15"	N67°E	87.14 feet
Balsam	10"	S65°E	77.08 feet
Center-Line Hwy 55		West	12.70 feet
Steel Sign Post		N89°34'00"E	41.17 feet

Dated at Iron River, MI, Wis., this 22nd day of April, 1993

Signature Gary L. Pisoni Title Land Surveyor Registration No. S-1634
(County Surveyor, Registered Land Surveyor, or other duly authorized official)

Office of Register of Deeds, County of Forest, I hereby certify that the within
instrument was filed in this office for record on the 12th day of August, 1993
at 1:25 o'clock P M.

By [Signature] (Register of Deeds)
Deputy

FORM NO. 985-A
H.C. Muller Company

Stock No. 26273
DOCUMENT NUMBER
148151

43713090000

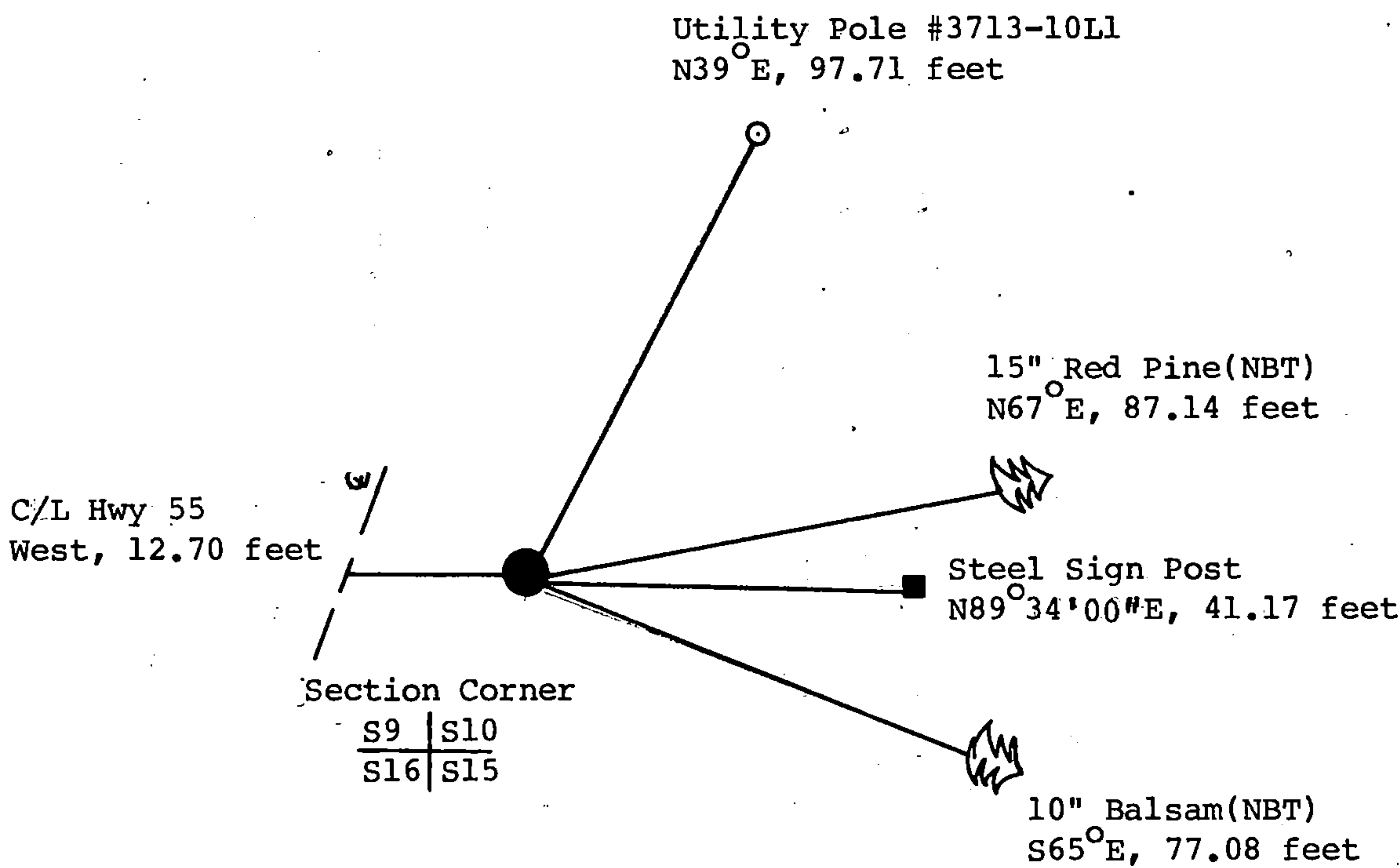
(e) Describe any material discrepancy between the location of the corner as restored or reestablished and the location of that corner as previously restored or reestablished by distance and direction. Show the discrepancy on the plan view drawing under (d), above. Show the distances between the corner as previously restored or reestablished and (1) the corner as restored or reestablished, and (2) to at least 2 of the witness monuments shown on the drawing in (d), above.

See drawing below.

(f) Was the corner restored through acceptance of (1) an obliterated evidence location, or, (2) a found perpetuated location?

Restored through acceptance of evidence.

(g&h) Was the corner reestablished through lost corner proportionate methods? If so, show the method, including the directions and distances to other public land survey corners used as evidence or used for proportioning in determining the corner location?



(i) I, Gary L. Pisoni
(type or print name) certify that the corner location shown on this record was determined by me or under my direction and control and that this U.S. Public Land Survey Monument Record is correct and complete to the best of my knowledge and belief.

Gary L. Pisoni Signature June 25, 1993 Date

Survey requested by: She Val District Ranger 6/12/93 Date

