

U.S. PUBLIC LAND SURVEY MONUMENT RECORD

Index No. **E-9**

State of Wisconsin }
 County of Forest } ss.

History of original corner establishment:
 Original Government Survey in 1865 by J.L. Nowlin.

I, Gary L. Pisoni, do hereby certify that on the 15th day of March, 1993, I found evidence of the Northwest Section corner of Section 9 Township 37, North, Range 13 East, Fourth Principal Meridian, as described hereon; and that from this evidence I established a new monument and accessories as described hereon to perpetuate the original location of this corner.

In 1970, Jean Resvick, a Land Surveyor with the U.S. Forest Service, restored the corner position at a proportional location. The corner position is an "X" chiseled on a large rock, from which the following bear;

Elm	11"	N18°E	4.8 feet
Elm	9"	S10°E	38.5 feet
Witness Monument	2"x60"	South	41.1 feet
Elm	9"	N66°E	8.7 feet
Elm	8"	S38°E	14.5 feet
W. Ash	23"	S33°W	53.3 feet

Found "X" chiseled in rock as described from which the following bears;
 Witness Monument 2"x60" South 41.08 feet

All bearing trees are dead.

Resident witnesses:

Description of monument and accessories I established to perpetuate the original location of this corner.

Blazed and scribed the following new bearing trees;

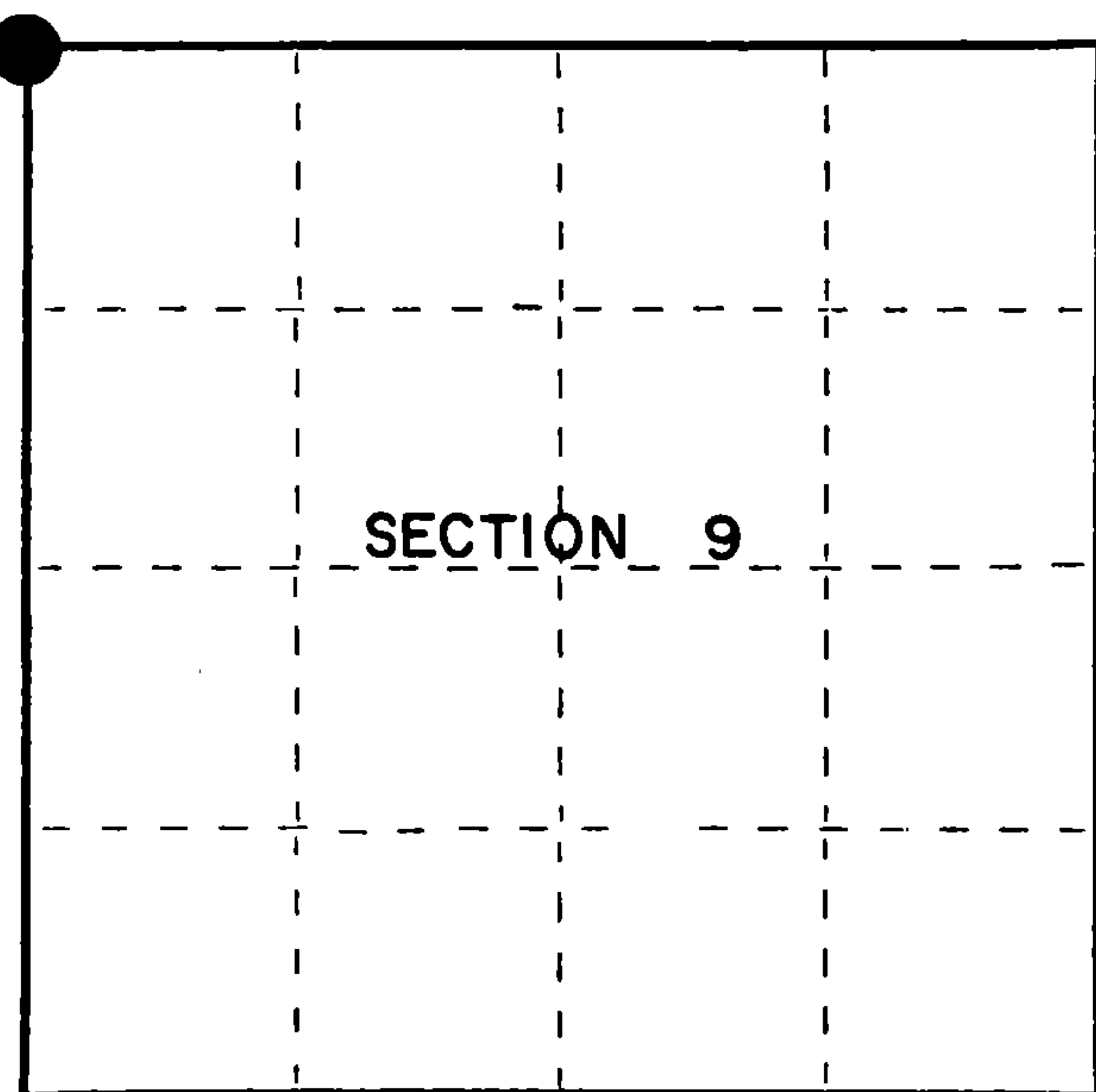
Red Maple	7"	N62°E	10.09 feet
Black Cherry	9"	S28°E	20.81 feet
Balsam	7"	N50°W	22.06 feet
Steel Sign Post		South	41.80 feet

Dated at Iron River, MI, ~~Wis.~~, this 22nd day of April, 1993.

Signature Gary L. Pisoni Title Land Surveyor Registration No. S-1634
 (County Surveyor, Registered Land Surveyor or other duly authorized official)

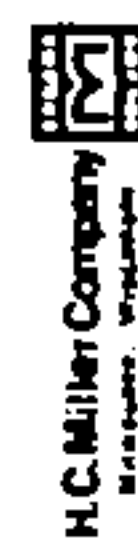
Office of Register of Deeds, County of Forest, I hereby certify that the within instrument was filed in this office for record on the 12th day of August, 1993 at 1:25 o'clock P M.

By Jean Resvick (Register of Deeds) Deputy



● = Corner monument restored.

FORM NO. 985-A



Stock No. 26273
 DOCUMENT NUMBER
148146

4371305000

(e) Describe any material discrepancy between the location of the corner as restored or reestablished and the location of that corner as previously restored or reestablished by distance and direction. Show the discrepancy on the plan view drawing under (d), above. Show the distances between the corner as previously restored or reestablished and (1) the corner as restored or reestablished, and (2) to at least 2 of the witness monuments shown on the drawing in (d), above.

See drawing below.

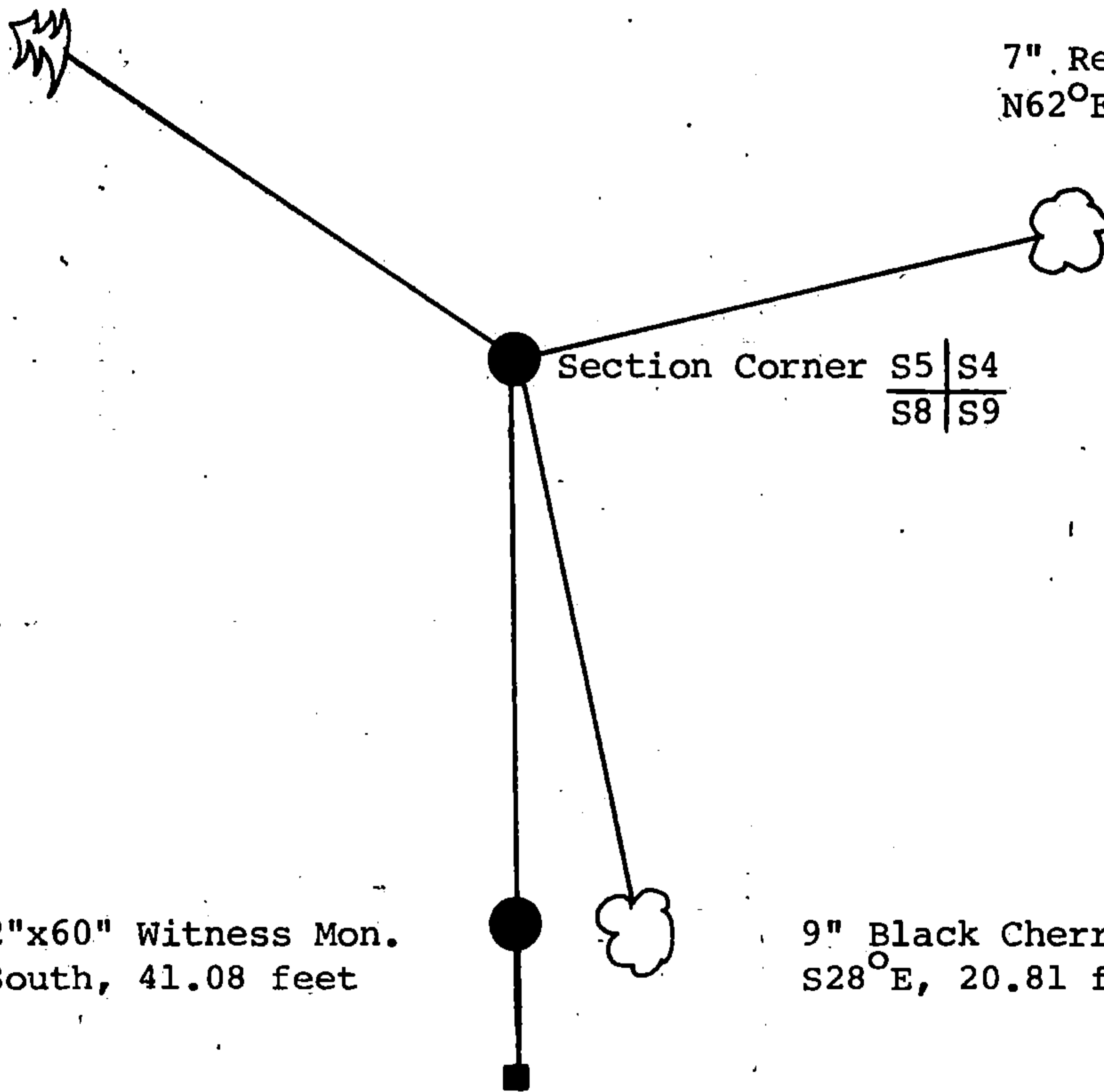
(f) Was the corner restored through acceptance of (1) an obliterated evidence location, or, (2) a found perpetuated location?

Restored through acceptance of a found perpetuated location.

(g&h) Was the corner reestablished through lost corner proportionate methods? If so, show the method, including the directions and distances to other public land survey corners used as evidence or used for proportioning. In determining the corner location?

7" Balsam(NBT)
N50°W, 22.06 feet

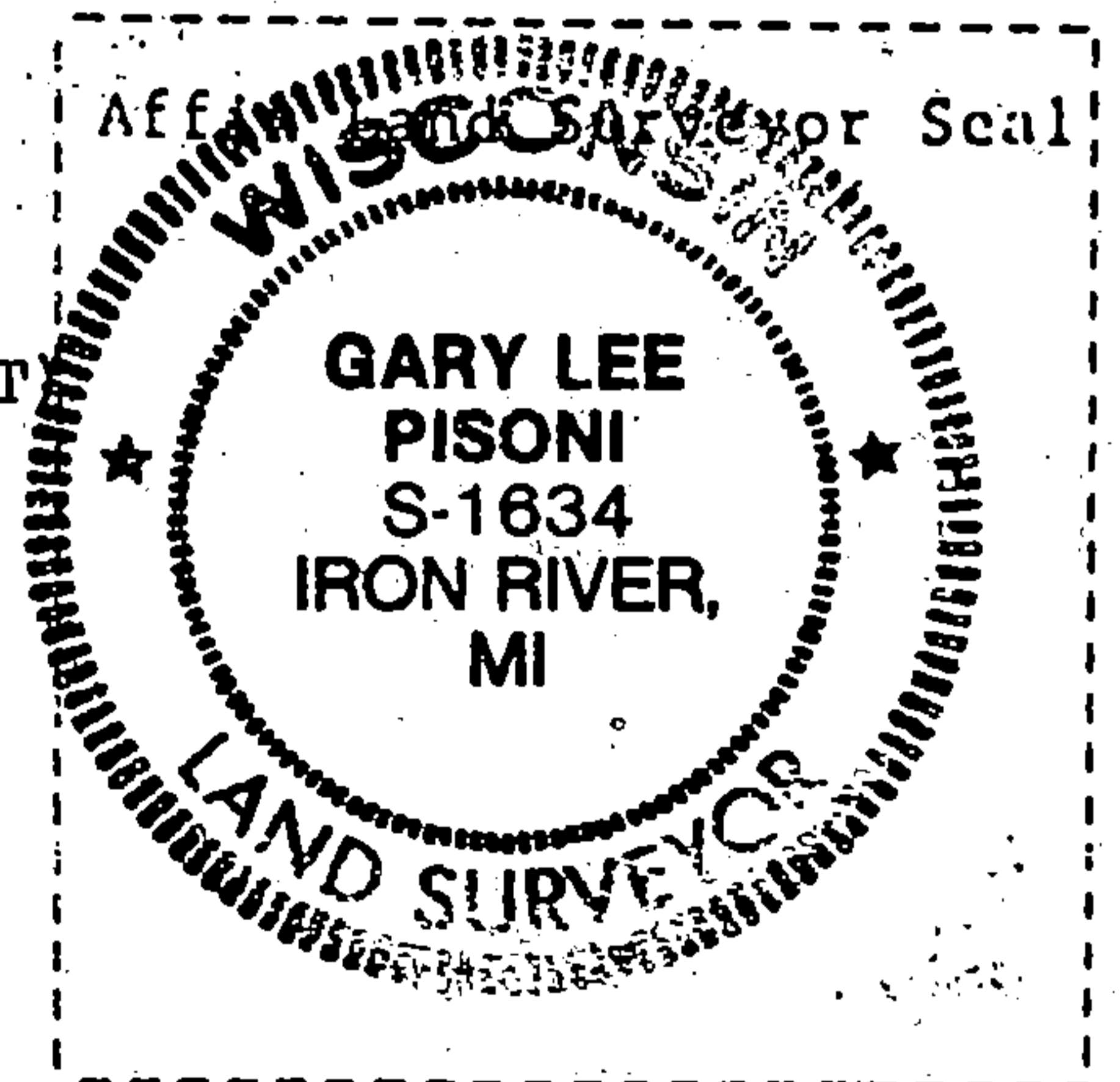
7" Red Maple(NBT)
N62°E, 10.09 feet



2"x60" Witness Mon.
South, 41.08 feet

9" Black Cherry(NBT)
S28°E, 20.81 feet

Steel Sign Post,
South, 41.80 feet



(i) I, Gary L. Pisoni
(type or print name) certify that the corner location shown on this record was determined by me or under my direction and control and that this U.S. Public Land Survey Monument Record is correct and complete to the best of my knowledge and belief.

Gary L. Pisoni Signature June 25, 1993 Date

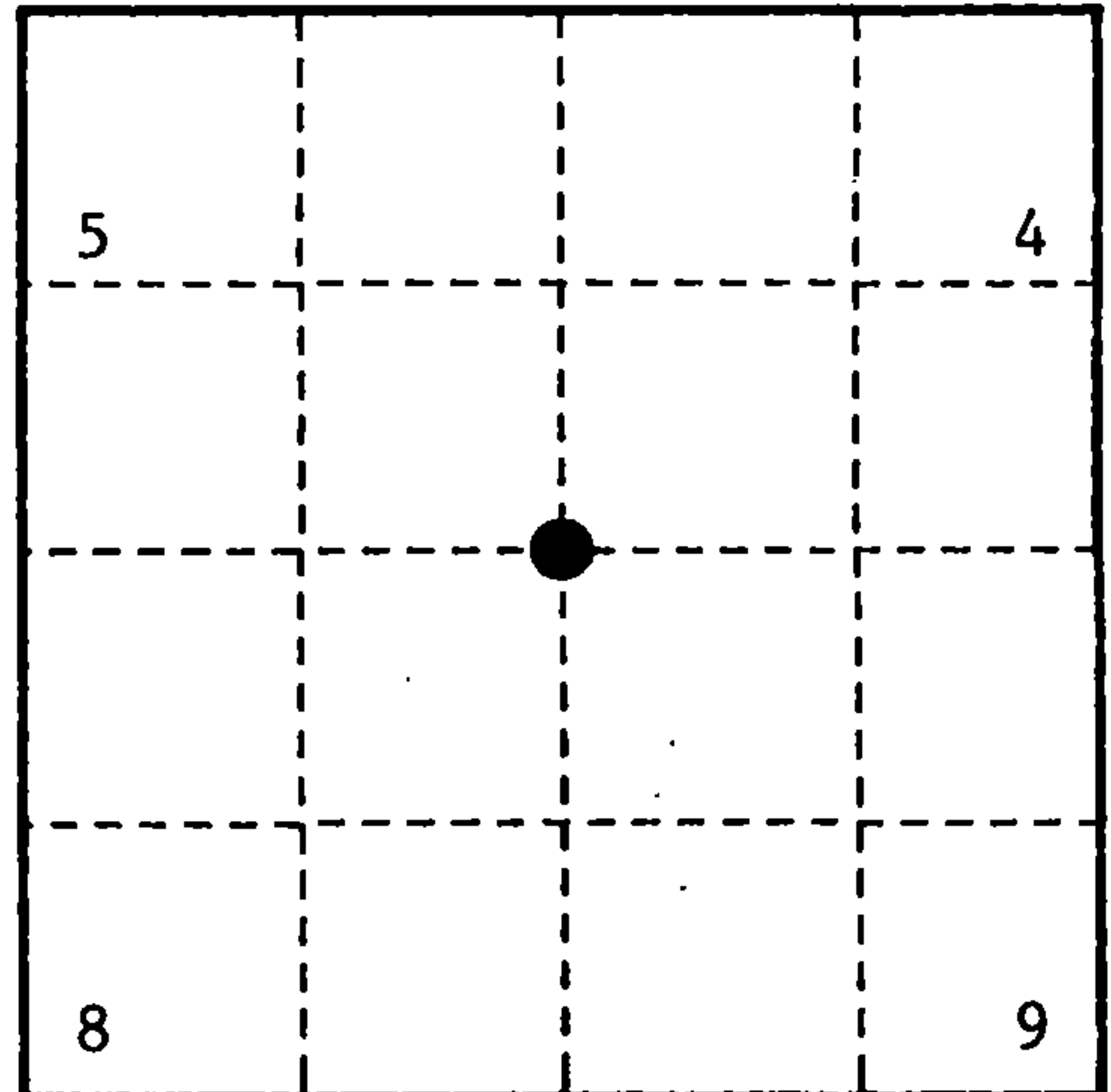
Survey requested by: Sue Vaf District Ranger 6/12/93 Date

U. S. PUBLIC LAND SURVEY MONUMENT RECORD

INSTRUCTIONS: This record shall show the location of the corner and shall include all of the following nine elements (a through i).

(a) Identify the corner by reference to the U.S. public land survey system.

○ - Corner monument restored.
 Section Corner to Sections 4, 5, 8, 9
 T37N, R13E, Forest County, Wisconsin



(b) Describe any record evidence, monument evidence, occupational evidence, testimonial evidence or any other material evidence you considered, and whether the monument was found or placed.

Original Government Survey in 1865 by J. L. Nowlin.

In 1970, Jean Resvick, a Land Surveyor with the U.S. Forest Service, restored the corner position at a proportional location. The corner position is an 'X' chiseled on a large rock from which the following bear:

Witness corner monument, 2"x60" brass capped iron pipe, stamped as follows:
 T37N, R13E, S4, S5, S8, S9, North, 41.08 feet, 1970, S-802

Elm	11"	N 18°E	4.8 feet
Elm	9"	S 10°E	38.5 feet
Witness Mon.		South	41.1 feet
Elm	9"	N 66°E	8.7 feet
Elm	8"	S 38°E	14.5 feet
White Ash	23"	S 33°W	53.3 feet

In 1993, Gary L. Pisoni RLS, found the above chiseled 'X' and witness corner. The above bearing trees were all dead.

1993 Corner references:

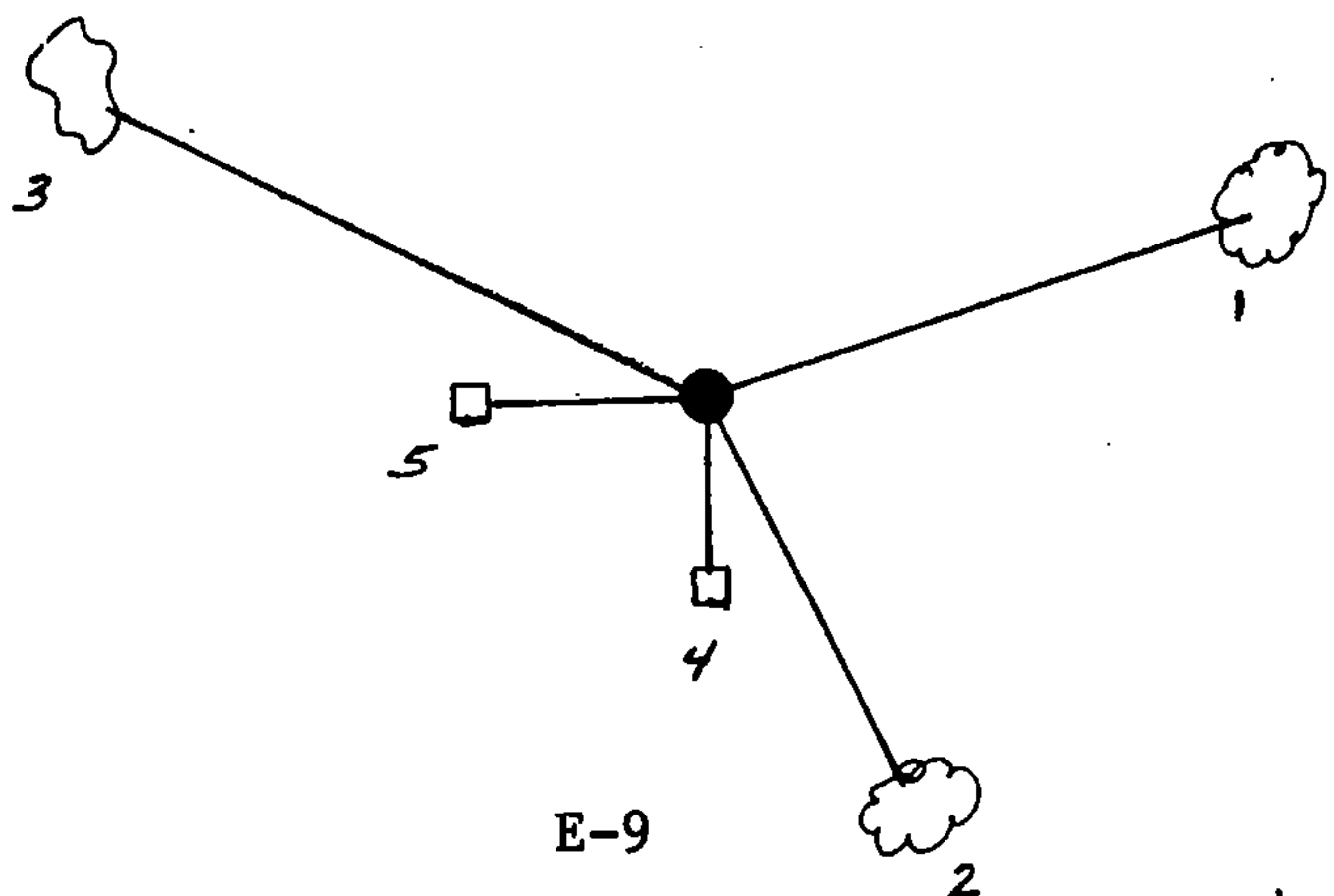
Red Maple	7"	N 62°E	10.09 feet
Black Cherry	9"	S 28°E	20.81 feet
Balsam	7"	N 50°W	22.06 feet
Steel sign post		South	41.80 feet

In 1999, Gary L. Pisoni, found the above monument and assessories as described below:
 A survey by Jean Resvick dated 1965 - 1971 which included Sections 4, 5, 6, 7 is on file with the U.S.F.S. See prev. LCC dated 8/12/93, Document No. 148146.

(c) In the plan view drawing below, provide reference ties to at least 4 witness monuments, or, if the location is within a municipality, to at least 2 witness monuments. (witness monuments shall be made of concrete, natural stone, iron or other equally durable material.)

(d) Show a plan view drawing depicting the relevent monuments and reference ties which is sufficient in detail to enable accurate relocation of the corner monument if the corner monument is disturbed. Indicate north.

1. Red Maple, 8", N 62°E, 10.09 feet
2. Black Cherry, 10", S28°E, 20.81 feet
3. Balsam, 8", N 50°W, 22.06 feet
4. Steel sign post, South, 41.80 feet
5. Steel sign post, West, 1.55 feet (new)



REGISTER'S OFFICE }
 Forest County, Wis. }
 Received for record this 27th day
 of October A.D., 1999 at
10:05 o'clock A.M. and recorded
 in Vol. Corner Restoration
 page E-9
Kay Swanson Deputy
 Register of Deeds

E-9

43713050000

E-9

(e) Describe any material discrepancy between the location of the corner as restored or reestablished and the location of that corner as previously restored or reestablished by distance and direction. Show the discrepancy on the plan view drawing under (d). above. Show the distances between the corner as previously restored or reestablished and (1) the corner as restored or reestablished, and (2) to at least 2 of the witness monuments shown on the drawing in (d), above.

None

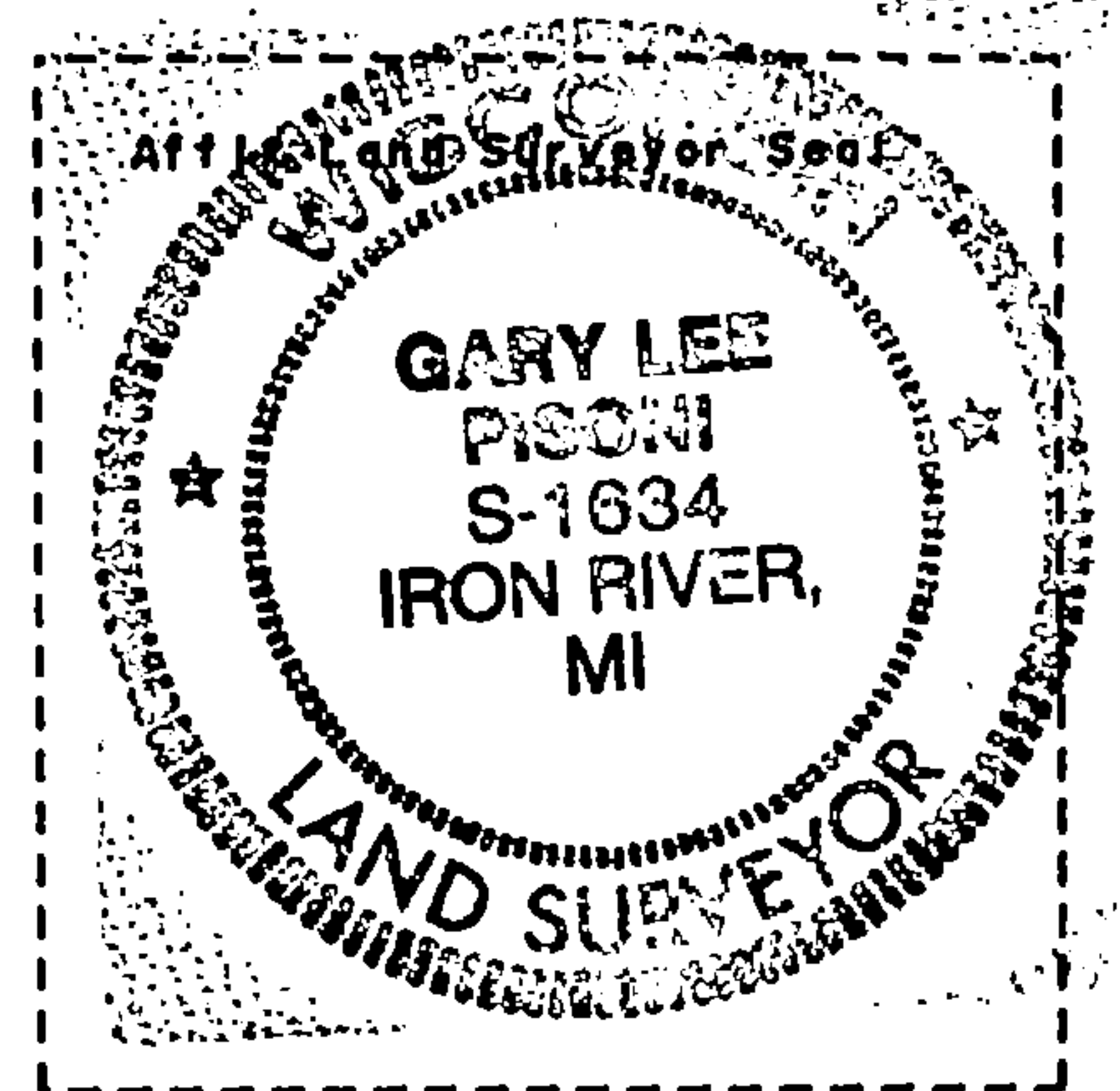
(f) Was the corner restored through acceptance of (1) an obliterated evidence location, or, (2) a found perpetuated location ?

Restored from accepted evidence.

(g & h) Was the corner reestablished through lost corner proportionate methods? If so, show the method, including the directions and distances to other public land survey corners used as evidence or used for proportioning in determining the corner location?

Gary L. Pisoni

(1) I, _____
(type or print name) certify that the corner location shown on this record was determined by me or under my direction and control and that this U.S. Public Land Survey Monument Record is correct and complete to the best of my knowledge and belief.



Gary L. Pisoni

10-1-99

Signature

Date

CERTIFICATE READY FOR FILING:

[Signature]

District Ranger