

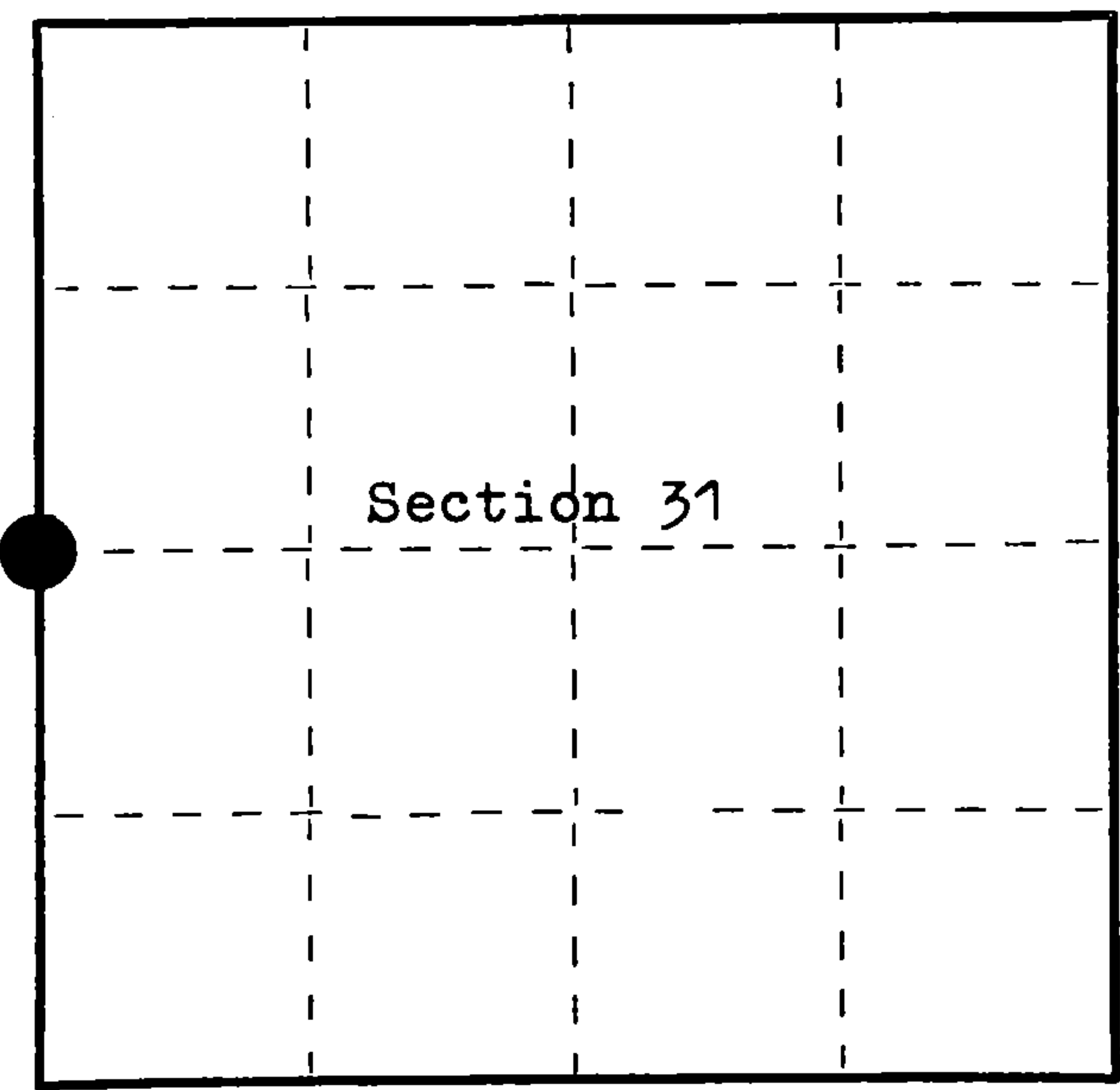
CERTIFIED LAND CORNER RESTORATION

Index No. **X I**
X-1

State of Wisconsin }
County of Forest } ss.

I William B. Cochrane, do hereby certify that on the 15 th day of October, 1977, I found evidence of the West Quarter corner of Section 31 Township 37, North, Range 13 East, Fourth Principal Meridian, as described hereon; and that from this evidence I established a new monument and accessories as described hereon to perpetuate the original location of this corner.

Resident witnesses:
Miles H. Cochrane
Brian James
James Jackson



○ = Corner monument restored.

History of original corner establishment:

Surveyed in 1858 by Alfred Millard North between Sections 31 and 36. 40.00 chains Set 1/4 Sections Post Hemlock, 19", S 35° W, 16 links Hemlock, 12", N 16° E, 19 links

Description of corner evidence found:

No original evidence was found. 4X4 Scribed cedar post and older post laying down. Y. Birch, 16", S 14° E, 29 links Elm, 10", North, 8.5 links These trees were blazed and scribed by an unkown surveyor about 40 years ago. (The Elm was recently cut during logging operations.)

Description of monument and accessories I established to perpetuate the original location of this corner.

I replaced the post found with a 2 1/2" Berntsen A-1 Federal Aluminum Monument, 30 inches long, with the cap stamped:

T37N, R12E, R13E, S31, S36, 1977, S-1107

From which the following bear:
Y. Birch, 16", S 14° E, 19.99 feet (Old B.T. Found)
Maple, 7", N 80° W, 26.34 feet

Dated at Hiles, Wis., this 23 rd day of November, 1977

Signature William B. Cochrane Title Land Surveyor Registration No. S-1107
(County Surveyor, Registered Land Surveyor, or other duly authorized official)

Office of Register of Deeds, County of FOREST, I hereby certify that the within instrument was filed in this office for record on the 29 th day of November, 1977 at 11:30 o'clock A. M.

Eugene Stutz
(Register of Deeds)
By _____ Deputy

DOCUMENT NUMBER -- **112877**

FORM 985 M. C. MILLER CO., MILWAUKEE

43712342000

U.S. PUBLIC LAND SURVEY MONUMENT RECORD

Index No. X-25.....

State of Wisconsin } ss.

County of Forest.....

History of original corner establishment:

1858 - Alfred Millard established this corner at 40.00 chains and set a wood post with two BTs:
19" Hemlock, S35°W, 16 links 12" Hemlock, N16°E, 19 links
1977 - Wm. Cochrane found 4"x4" fallen cedar post with two local BTs:
16" Yellow Birch, S14°E, 29 links 10" Elm, North, 8.5 links
Cochrane set a Forest County aluminum monument and made a new BT:
7" Maple, N80°W, 26.34'
Certificate filed as document # 112877 dated 11/23/77

Description of corner evidence found:

We found Forest County monument in excellent condition with only one BT remaining, a 7" Maple, N80°W, 26.29'. The other BT was recently cut, a Yellow Birch S19°E, 19.2'

I Milo E. Stefan....., do hereby certify that on the 22nd..... day of February.....; 19.89., I found evidence of the East Quarter..... corner of Section 36..... Township..... 37....., North, Range 12 East....., Fourth Principal Meridian, as described hereon; and that from this evidence I established a new monument and accessories as described hereon to perpetuate the original location of this corner.

Resident witnesses:

Myron Smith.....

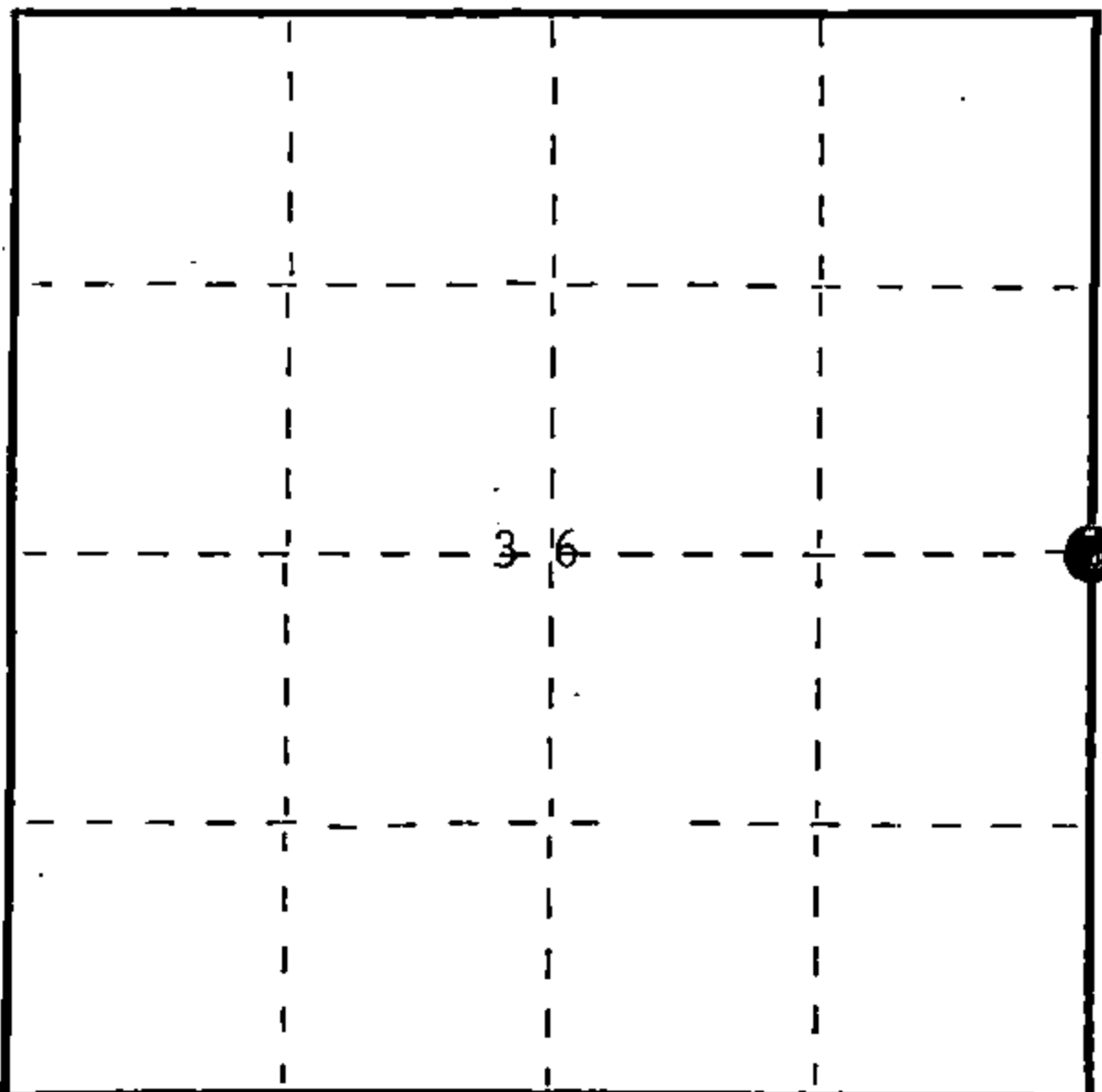
Richard Belliveau.....

Jeffrey Kennedy.....

Description of monument and accessories I established to perpetuate the original location of this corner.

We made three new BTs:
10" Sugar Maple, N88°E, 29.53'
6" Sugar Maple, S10°W, 23.04'
6" Red Maple, N32°W, 26.85'

We placed a steel sign post Northwest, 0.9'. The BTs were scribed in the stump blaze, painted with a red band and BT sign nailed to the front and back of each tree.



○ = Corner monument restored.

Dated at Rhinelander....., Wis., this 8th..... day of April....., 19. 89..

Signature Milo E. Stefan..... Title Land Surveyor..... Registration No. 1558.....
(County Surveyor, Registered Land Surveyor, or other duly authorized official)

Office of Register of Deeds, County of....., I hereby certify that the within instrument was filed in this office for record on the..... day of....., 19..... at..... o'clock..... M.

.....
(Register of Deeds)

By..... Deputy

REGISTER'S OFFICE }
Forest County, Wis. }
Received for record this 22th day
of APRIL A.D., 19 89 at
9:10 o'clock A.M. and recorded
In Vol. CORNER RESTORATIONS
page X-25
Paul A. Leininger
Register of Deeds

FORM NO. 985-A
H.C. Miller Company

Stock No. 26273
DOCUMENT NUMBER
137280

43712362000

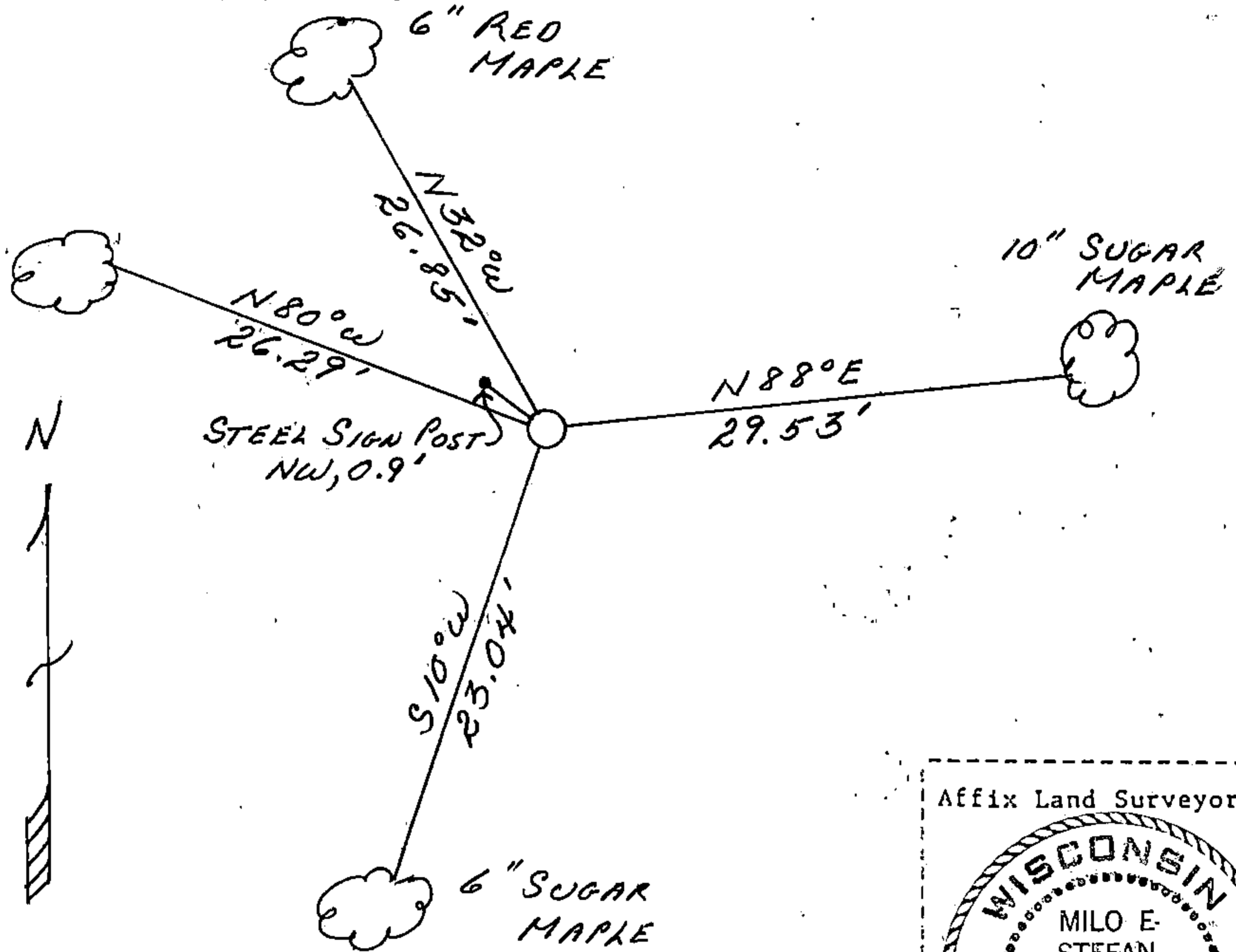
(e) Describe any material discrepancy between the location of the corner as restored or reestablished and the location of that corner as previously restored or reestablished by distance and direction. Show the discrepancy on the plan view drawing under (d), above. Show the distances between the corner as previously restored or reestablished and (1) the corner as restored or reestablished, and (2) to at least 2 of the witness monuments shown on the drawing in (d), above.

N/A

(f) Was the corner restored through acceptance of (1) an obliterated evidence location, or, (2) a found perpetuated location?

(1) a found perpetuated location.

(g&h) Was the corner reestablished through lost corner proportionate methods? If so, show the method, including the directions and distances to other public land survey corners used as evidence or used for proportioning in determining the corner location?



Affix Land Surveyor Seal



(i) I, Milo E. Stefan
(type or print name) certify that the corner location shown on this record was determined by me or under my direction and control and that this U.S. Public Land Survey Monument Record is correct and complete to the best of my knowledge and belief.

Milo E. Stefan
Signature

4/8/89
Date

Survey Requested by:

Dale Stange
District Ranger

4/20/89
Date