

CERTIFIED LAND CORNER RESTORATION

State of Wisconsin }  
County of Forest } ss.

I Jean F. Resvick, do hereby certify that on the 23rd day of May, 1969, I found evidence of the South quarter corner of Section 34 Township 37 North, Range 12 East, Fourth Principal Meridian, as described hereon; and that from this evidence I established a new monument and accessories as described hereon to perpetuate the original location of this corner:

Description of original monument and accessories and subsequent restorations:

Surveyed in 1858 by Alfred Millard  
40.0 chains west between sections 3 and 34  
Set wood post  
Cedar 8, N10E, 11 lks.  
Tamarack 10, S35W, 40 lks.  
7.93 chains west to stream 80 lks. wide runs SW

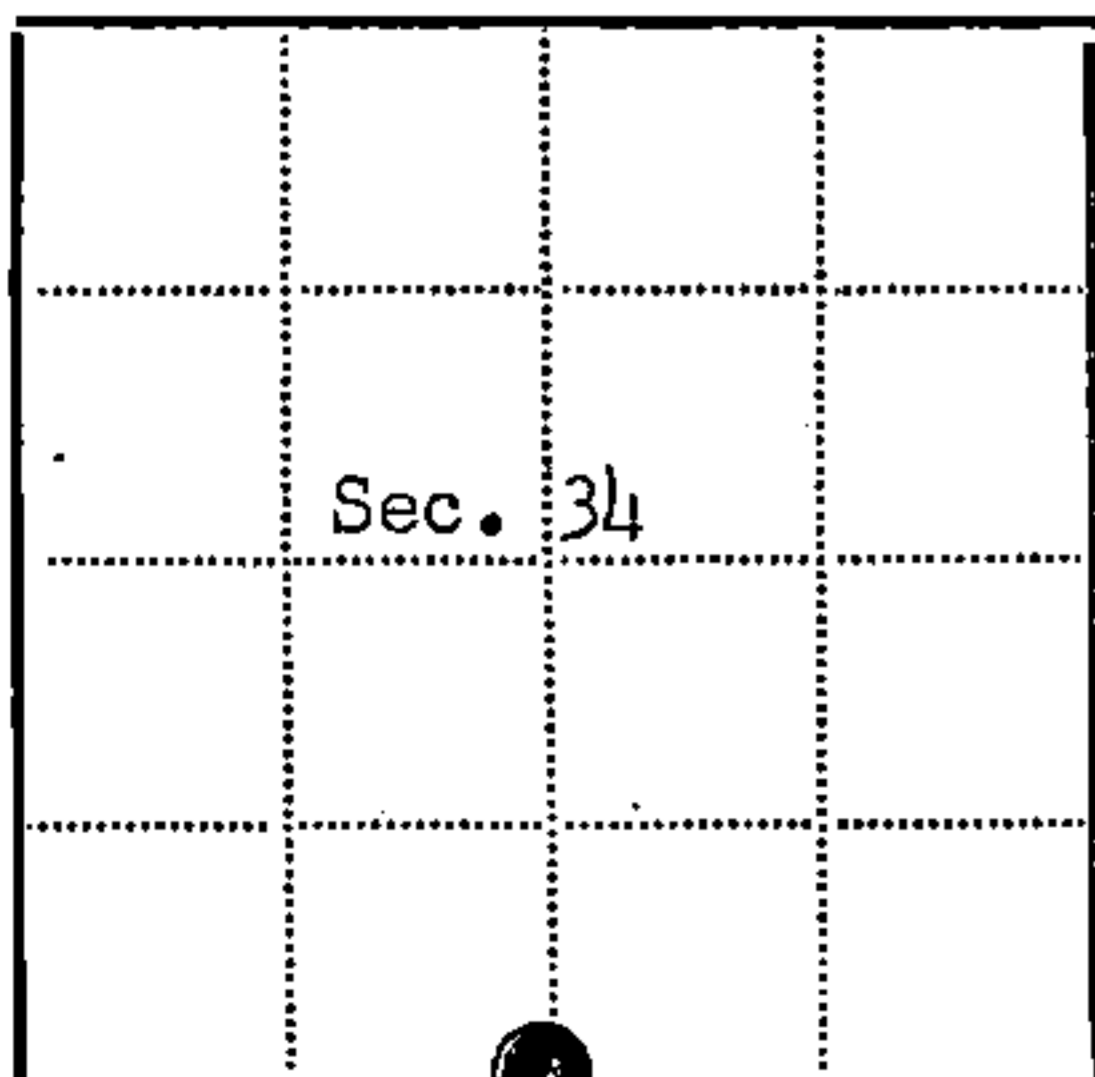
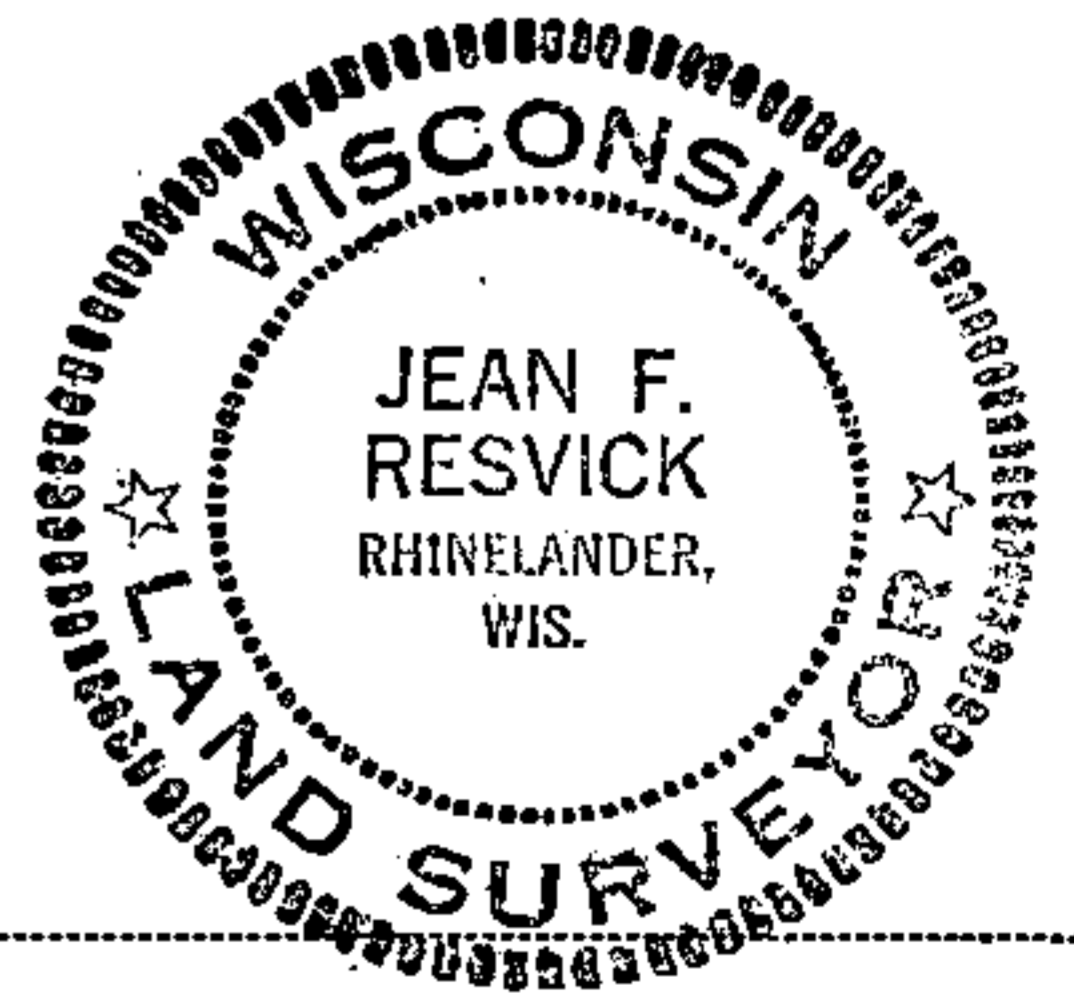
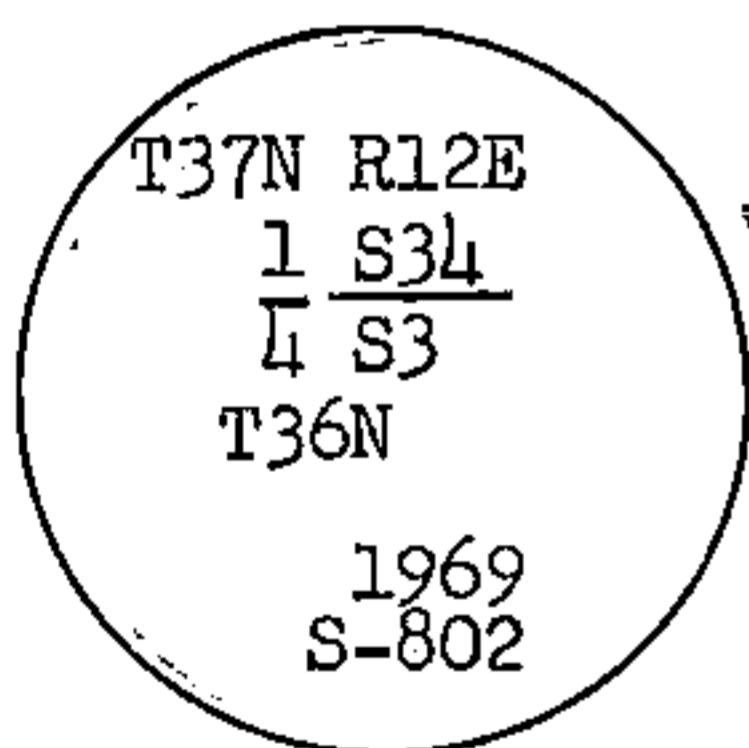
Description of corner evidence found:

4 x 4 scribed cedar post 73 lks. south of river at southern tip of river bend.  
8 chains west to river from post  
40 chains east to section corner.

Description of monument and accessories I established to perpetuate the original location of this corner:

Replace scribed cedar post with 2 inch inside diameter, galvanized wrought iron pipe 5 feet long, filled with concrete with brass cap marked.

From which the following blazed and scribed new bearing tree bears:  
White pine 13 inch bears S49E, 108.23 ft. or 164 lks.



● = Corner monument restored  
□ =

Resident witnesses.....

Dated at Rhinelander Wisconsin, this 23 day of Jan 1970..

Signature Jean F. Resvick Title Cadastral Surveyor  
(County Surveyor, Registered Land Surveyor, or other duly authorized official)

Surveyors Registration No. S-802 DOCUMENT No. 98051

Office of Register of Deeds County of Forest

I hereby certify that the within instrument was filed in this office for record on the 22nd day of May 1970, and was filed in Book No. Page No. Z-15 of County Records.

Signature Eugene Staszewski Title Register of Deeds

Township 37 North, Range 12 East, Section 34, Index No. Z-15, Page No.

43717 346020

215

U.S. PUBLIC LAND SURVEY MONUMENT RECORD

Index No. Z-15.....

State of Wisconsin }  
County of Forest..... } ss.

History of original corner establishment:

1858 - Alfred Millard established this corner at 40.00 chains and set a wood post with two BTs;

8" Cedar, N10°E, 11 links                      10" Tamarack, S35°W, 40 links  
5/23/1969 - Jean Resvick found a scribed wood post and restored the corner. He set a 2" x 60" galvanized iron pipe / brass cap with one BT.

13" white pine, S49°E, 108.23'  
Certificate filed 5/22/70 as document #98051.

Description of corner evidence found:

Monument as set by Resvick in excellent condition.  
13" White Pine, S49°E, 108.23' (Dead).  
6" x 6" Cedar Post, North 1.0'.

Description of monument and accessories I established to perpetuate the original location of this corner. We made the following new BTs, placed BT tags, scribed the stump blaze and painted red bands and faces.

- 20" White Pine, S7°W, 154.17'
- 12" White Pine, S45°W, 134.81'
- 10" White Birch, S65W, 76.02'

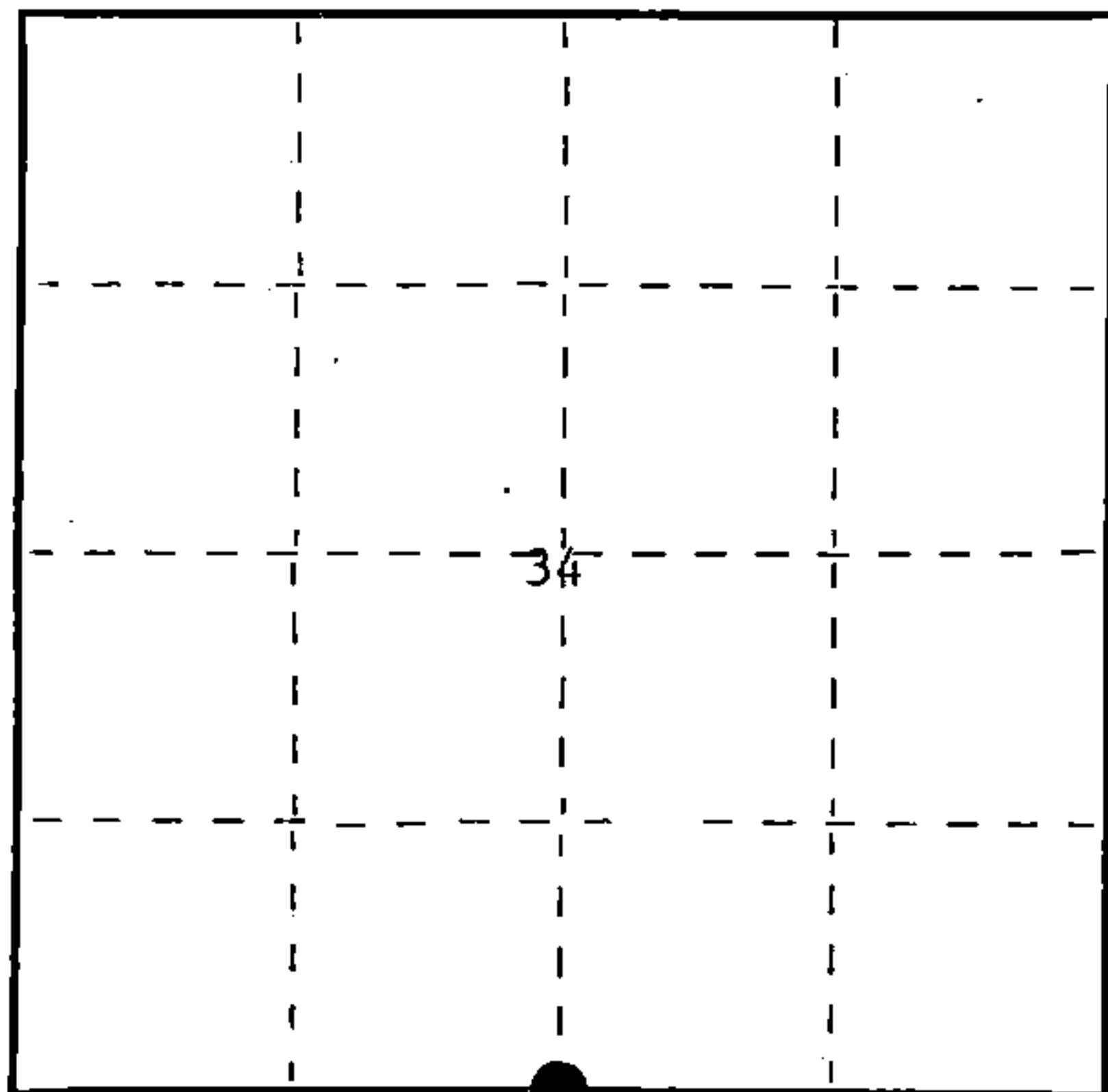
I, Milo E. Stefan....., do hereby certify that on the 2nd..... day of March....., 19.89....., I found evidence of the South Quarter corner of Section 34 Township 37....., North, Range 12 East....., Fourth Principal Meridian, as described hereon; and that from this evidence I established a new monument and accessories as described hereon to perpetuate the original location of this corner.

Resident witnesses:

Jeffrey Kennedy.....

Richard Belliveau.....

Myron Smith.....



○ = Corner monument restored.

Dated at Rhinelanders, Wis., this 21st day of March, 1989

Signature Milo E. Stefan Title Land Surveyor Registration No. 1558  
(County Surveyor, Registered Land Surveyor, or other duly authorized official)

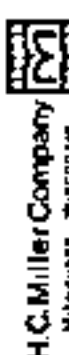
Office of Register of Deeds, County of....., I hereby certify that the within instrument was filed in this office for record on the..... day of....., 19..... at..... o'clock..... M.

.....  
(Register of Deeds)

By..... Deputy

REGISTER'S OFFICE  
Forest County, Wis.  
Received for record this 21st day  
of APRIL A.D., 1989 at  
9:10 o'clock A.M. and recorded  
in Vol. CORNER RESTORATIONS  
page 3-15  
Paul A. Schaeffer  
Register of Deeds

FORM NO. 985-A



Stock No. 26273

DOCUMENT NUMBER

137279

43712340020

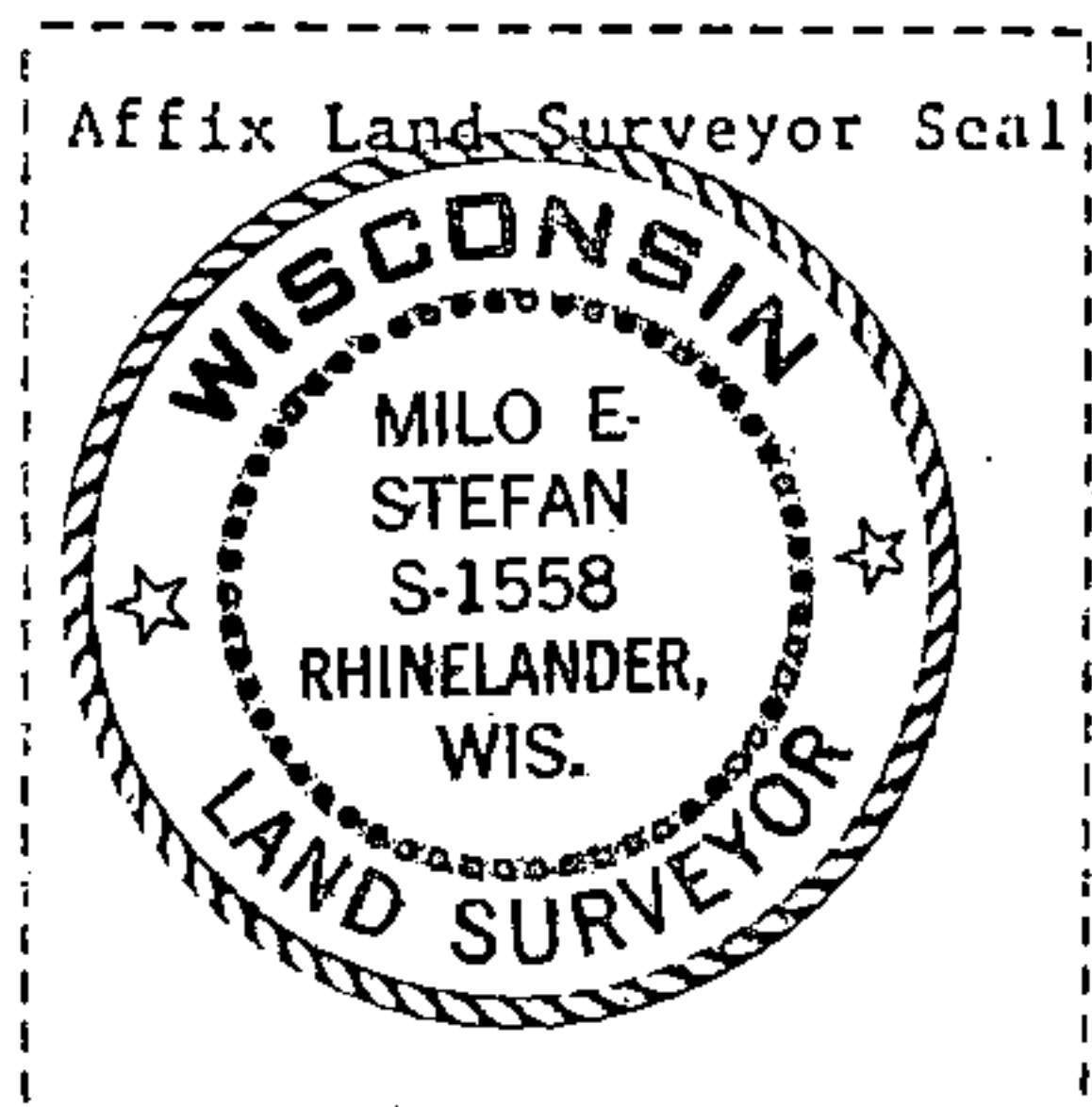
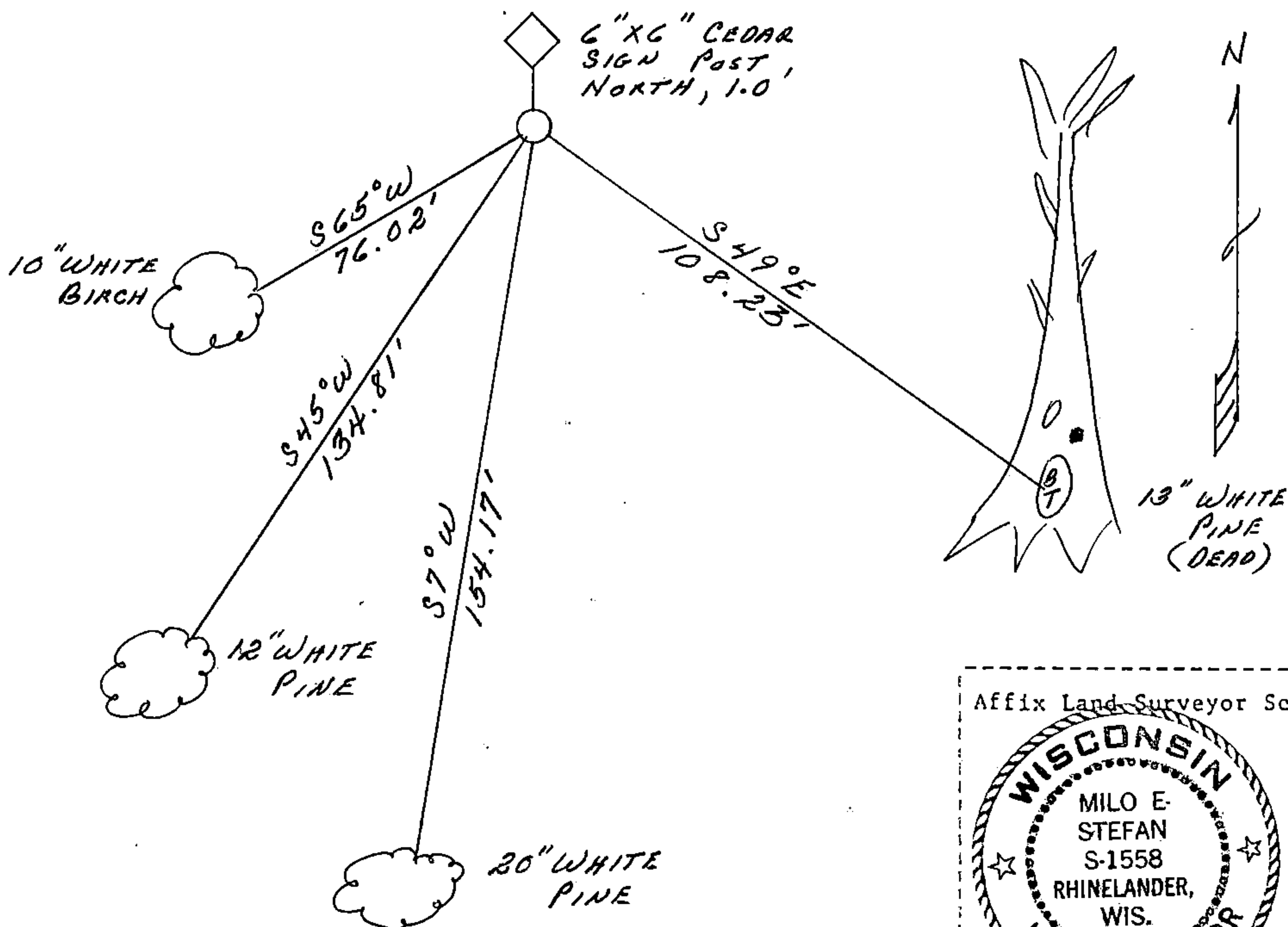
(e) Describe any material discrepancy between the location of the corner as restored or reestablished and the location of that corner as previously restored or reestablished by distance and direction. Show the discrepancy on the plan view drawing under (d), above. Show the distances between the corner as previously restored or reestablished and (1) the corner as restored or reestablished, and (2) to at least 2 of the witness monuments shown on the drawing in (d), above.

N/A

(f) Was the corner restored through acceptance of (1) an obliterated evidence location, or, (2) a found perpetuated location?

2) a found perpetuated location.

(g&h) Was the corner reestablished through lost corner proportionate methods? If so, show the method, including the directions and distances to other public land survey corners used as evidence or used for proportioning in determining the corner location?



(i) I, Milo E. Stefan  
 (type or print name) certify that the corner location shown on this record was determined by me or under my direction and control and that this U.S. Public Land Survey Monument Record is correct and complete to the best of my knowledge and belief.

Milo E. Stefan  
 Signature

4/8/89  
 Date

Survey Requested by: Dale Staege  
 District Ranger

4/20/89  
 Date