

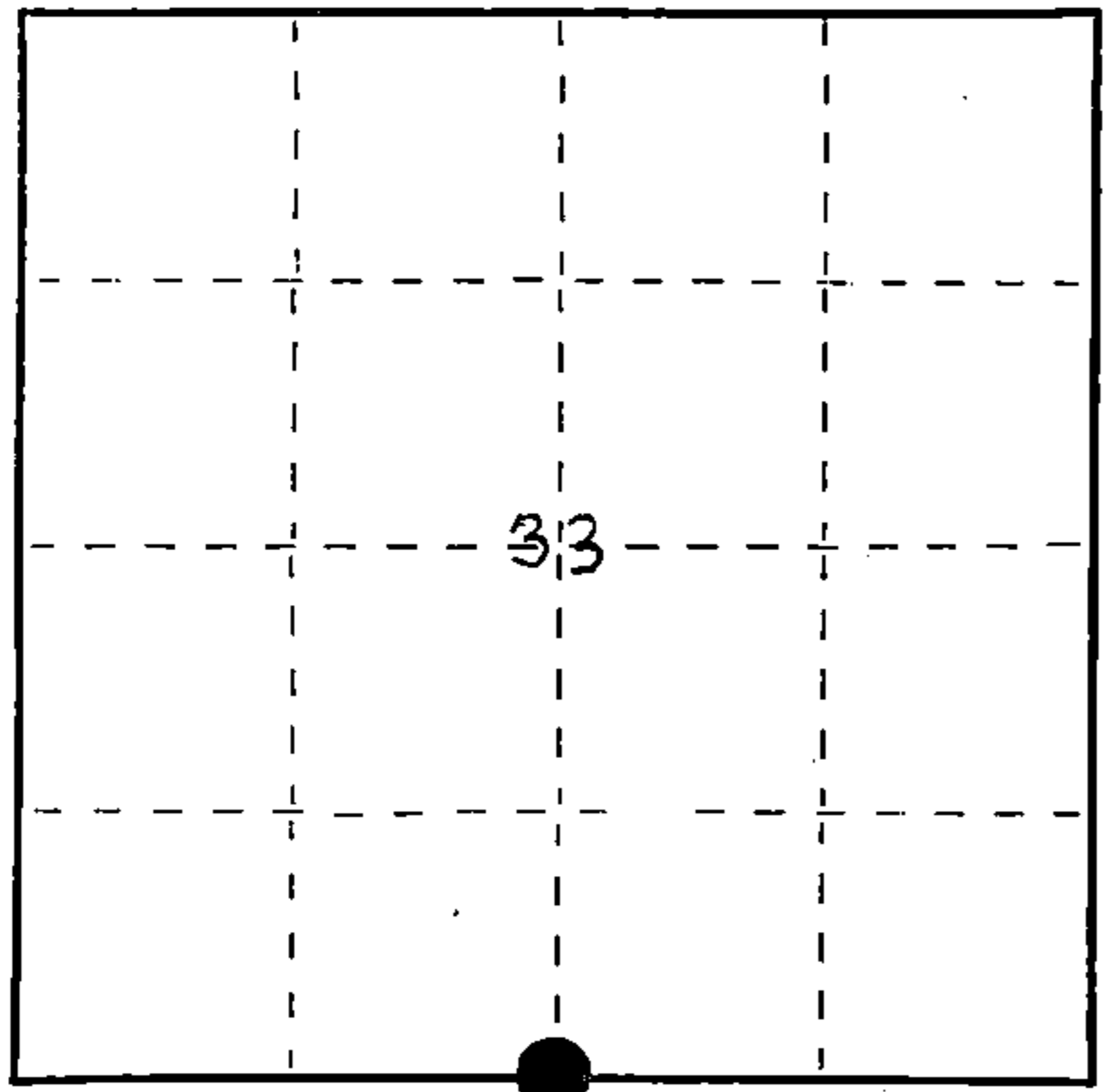
U.S. PUBLIC LAND SURVEY MONUMENT RECORD

Index No. Z-11

State of Wisconsin }
County of Forest } ss.

I, Milo E. Stefan, do hereby certify that on the 8th day of March, 1989, I found evidence of the South Quarter corner of Section 33 Township 37 North, Range 12 East, Fourth Principal Meridian, as described hereon; and that from this evidence I established a new monument and accessories as described hereon to perpetuate the original location of this corner.

Resident witnesses:
Jeffrey Kennedy
Myron Smith
Richard Belliveau



● = Corner monument restored.

History of original corner establishment:

1858 - Alfred Millard established this corner at 40.00 chains and set a wood post and two BTs:
7" Cedar, South, 26 links 10" Yellow Birch, N75°W, 38 links
1975 - Thomas Arnott restored corner. He placed an aluminum Forest County monument with two BTs:
6" Cedar, S42°E, 22.44' 8" Cedar, N70°W, 31.27'

Description of corner evidence found:

Forest County monument with Arnott's BTs in excellent condition.
Bearing to Arnott's NW BT is N59°W, not 70°.
A local BT of 50 years bears S33°E, 17.93'.
Certificate #108394 dated 12/16/75.

Description of monument and accessories I established to perpetuate the original location of this corner.

We placed a steel sign post, East, 5.0' and made two new BTs:
6" Cedar, N60°E, 26.14'
6" Black Ash, S20°W, 26.02'
We painted accessories to Forest Service standard, that is a red band around each tree, BT tags on the front and back with the stump blaze scribed and painted.

Dated at Rhinelander, Wis., this 20th day of March, 1989

Signature Milo E. Stefan Title Land Surveyor Registration No. 1558
(County Surveyor, Registered Land Surveyor, or other duly authorized official)

Office of Register of Deeds, County of Forest, I hereby certify that the within instrument was filed in this office for record on the _____ day of _____, 19____ at _____ o'clock _____ M.

(Register of Deeds)

By _____ Deputy

REGISTER'S OFFICE
Forest County, Wis.
Received for record this 20th day of April, A.D., 1989 at 9:10 o'clock A.M. and recorded in Vol. Corner Restorations page 3-11
Paul H. Scheubner
Register of Deeds

FORM NO. 985-A
H.C. Miller Company
Stock No. 26273
DOCUMENT NUMBER
137276

43712330020
SEE ALSO A-11 T 36 R12

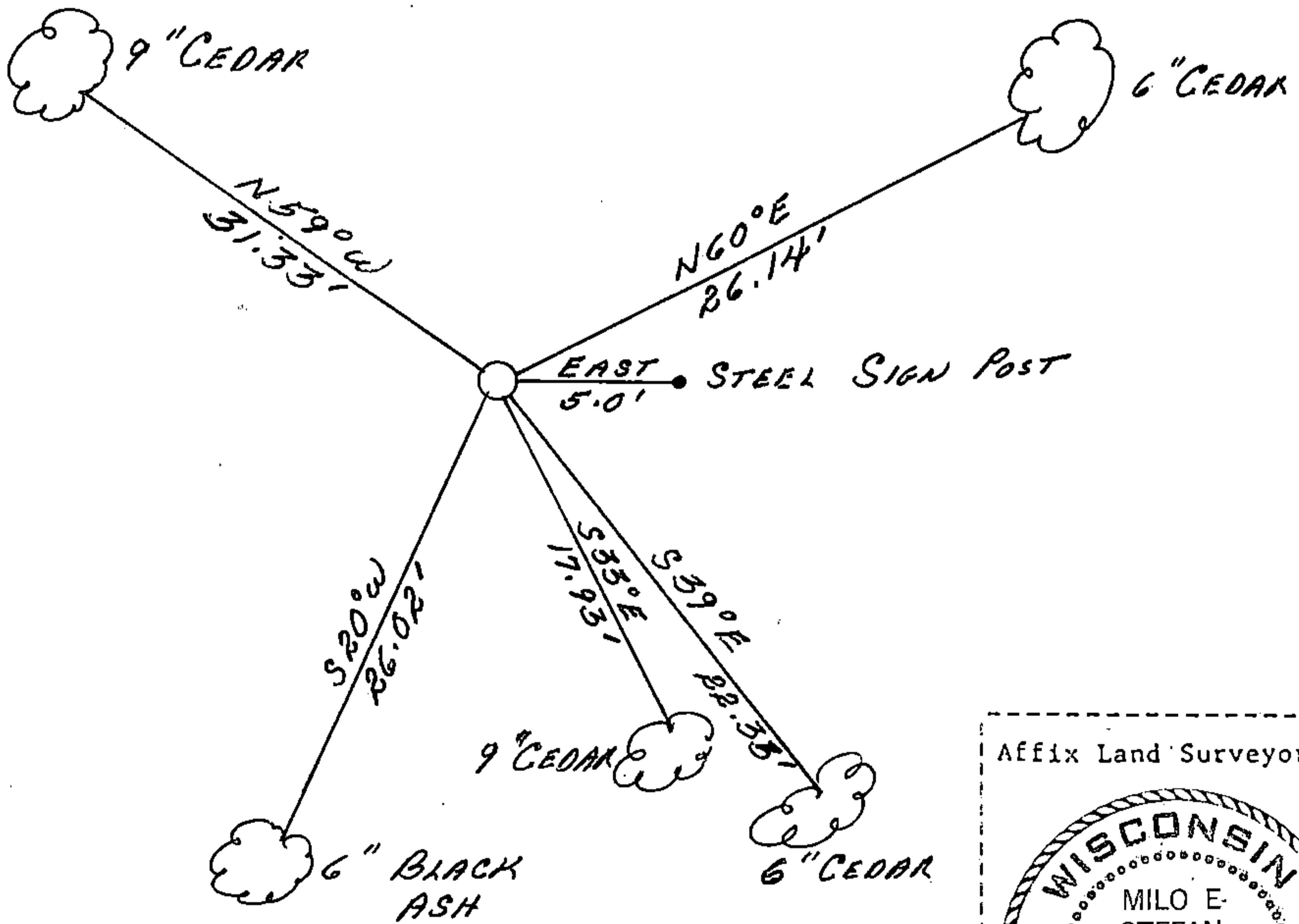
(e) Describe any material discrepancy between the location of the corner as restored or reestablished and the location of that corner as previously restored or reestablished by distance and direction. Show the discrepancy on the plan view drawing under (d), above. Show the distances between the corner as previously restored or reestablished and (1) the corner as restored or reestablished, and (2) to at least 2 of the witness monuments shown on the drawing in (d), above.

n/a

(f) Was the corner restored through acceptance of (1) an obliterated evidence location, or, (2) a found perpetuated location?

(2) a perpetuated location

(g&h) Was the corner reestablished through lost corner proportionate methods? If so, show the method, including the directions and distances to other public land survey corners used as evidence or used for proportioning in determining the corner location?



(i) Milo E. Stefan
 I, (type or print name) certify that the corner location shown on this record was determined by me or under my direction and control and that this U.S. Public Land Survey Monument Record is correct and complete to the best of my knowledge and belief.

Milo E. Stefan
 Signature

March 20, 1989
 Date

Survey Requested by: Dale's Stage
 District Ranger

4/20/89
 Date

CERTIFIED LAND CORNER RESTORATION

Index No. **A-11**

State of Wisconsin }
County of Forest } ss.

History of original corner establishment:

Y. Birch 10 N75W 38 Lks.
Cedar 7 South 26 Lks.

I Thomas R. Arnett, do hereby certify that on the 9th day of December, 19 75, I found evidence of the 1/4 corner of sections 4 & 33 Township 36 - 37, North, Range 12 E, Fourth Principal Meridian, as described hereon; and that from this evidence I established a new monument and accessories as described hereon to perpetuate the original location of this corner.

Description of corner evidence found:

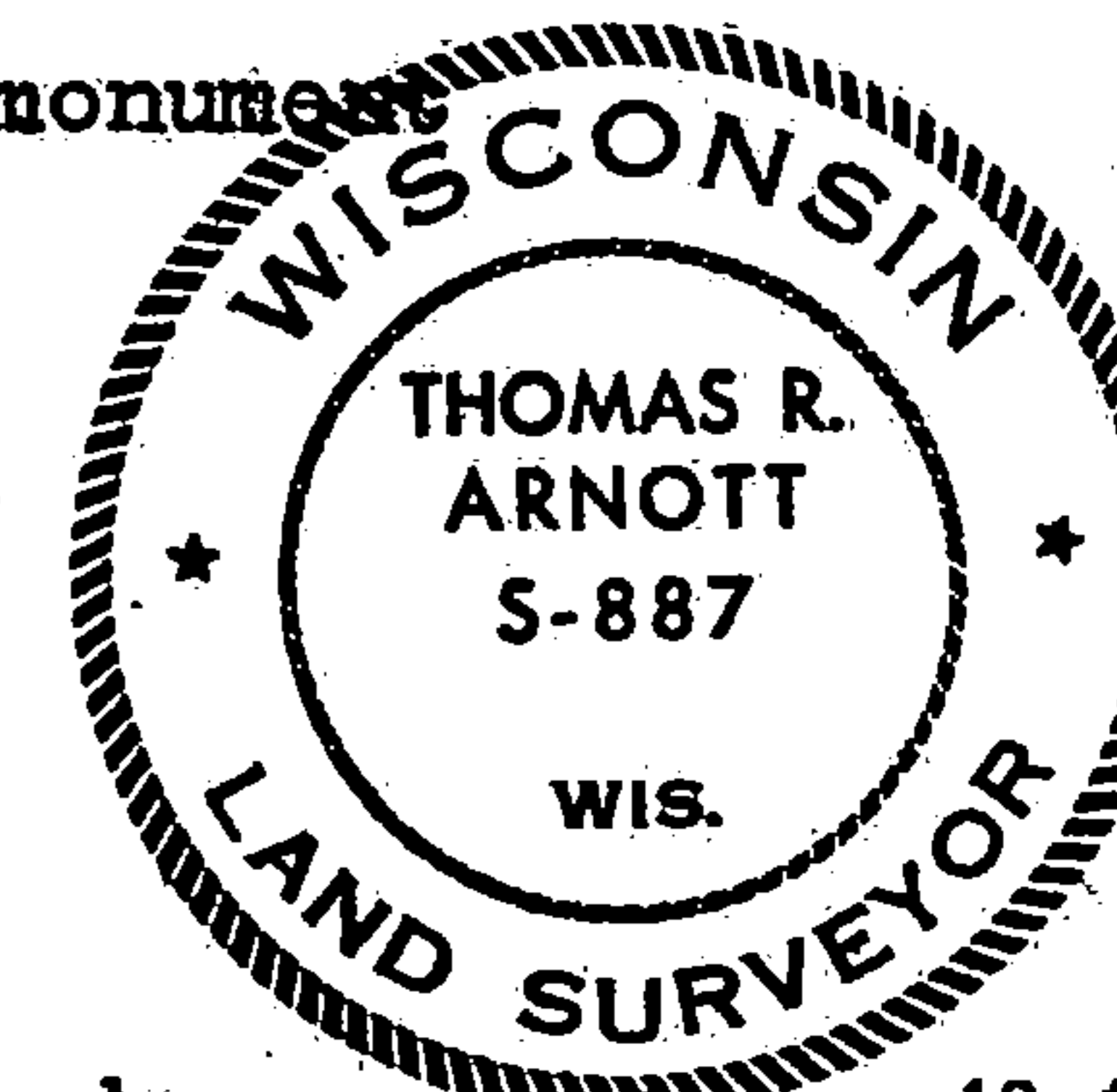
Wood post found in 1974, replaced at that time with 2" iron pipe

Resident witnesses:

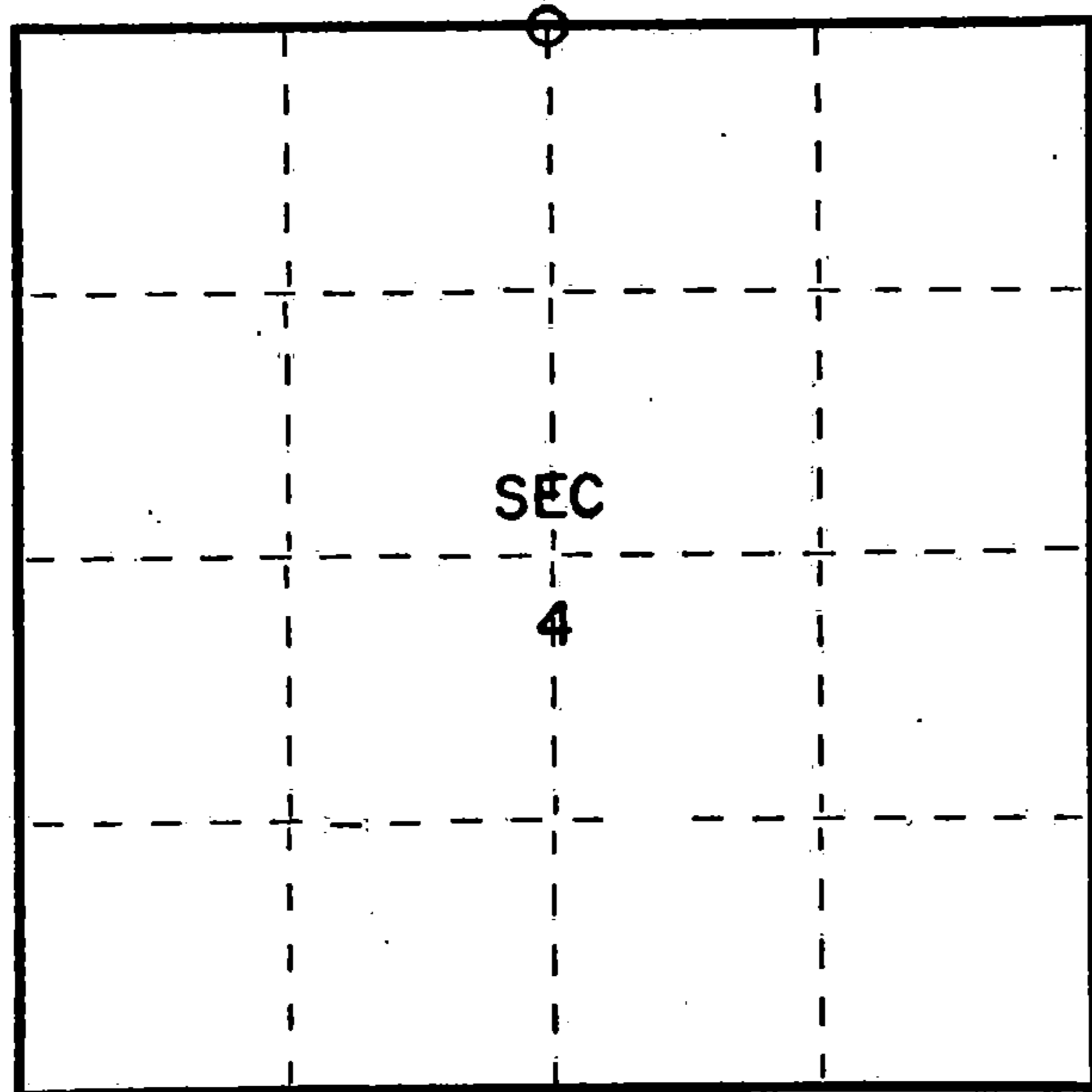
Description of monument and accessories I established to perpetuate the original location of this corner.

Replaced iron pipe with new Forest County aluminum monument

Ties:
Cedar 8 N70W 31.27 feet
Cedar 6 S42E 22.44 feet



FORM 985 W. C. MILLER CO., MILWAUKEE



○ = Corner monument restored.

Dated at Crandon, Wis., this 16th day of December, 19 75.

Signature Thomas Arnett Title Land Surveyor Registration No. S-887
(County Surveyor, Registered Land Surveyor, or other duly authorized official)

Office of Register of Deeds, County of Forest, I hereby certify that the within instrument was filed in this office for record on the 16th day of December, 19 75 at 11 o'clock A. M.

Engine Stutz Document Number
(Register of Deeds)

By _____ Deputy

108394

H3712330020

SEE ALSO Z-11 T-36 R/2